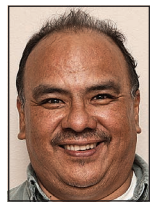


## Board

### Continued from P1

Carmen Lawson, also a Redmond resident, is a kindergarten teacher at Madras Elementary School, she told The Bulletin. Before teaching in Madras, Lawson was an educational assistant at Redmond Early Learning Center — now Hugh Hartman Elementary — and John Tuck Elementary School.

Keri Lopez, who lives in rural Deschutes County, is an administrator specializing in human resources and payroll for Bend-



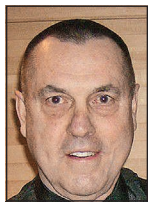
Gonzalez



Lawson



Lopez



Perry

based construction contractor Rogue Builders, according to county filings. She is also a board member of the Redmond Sports Federation nonprofit.

The fourth candidate is Eagle Crest resident Bob Perry, a retired marketing director for Gillette, according to county

filings. He served one term on the Redmond School Board, from 2011-15, and did not file for reelection afterwards. Perry was also the chair of the Deschutes County Republican Party from 2015-16.

■ Reporter: 541-617-7854, [jhogan@bendbulletin.com](mailto:jhogan@bendbulletin.com)

# Sports & Recreation

## Ridgeview tops Hood River Valley in IMC win, 46-26

BY JOE PETCHOW  
For The Spokesman

HOOD RIVER — Ridgeview running back Josh Biever was a workhorse for the Ravens in a 46-26 Inter-mountain Conference football win Friday at Hood River Valley.

The 175-pound senior ran 28 times for 209 yards and two touchdowns, and he also caught a pass for a third score as Ridgeview evened its record to 2-2. Quarterback Aiden Brenneman threw for four scores, including two to Jeremiah Schwartz, as the Ravens broke open the game with 16-0 third quarter scoring advantage.

Up-and-down Ridgeview entered the contest on a two-game losing streak, but the Ravens showed some punch in week two when they led league-leading Pendleton by two touchdowns at halftime before losing 20-12. Ridgeview was shut out 27-0 last week by cross-town rival Redmond, while Hood River lost its first game, 26-6, at Pendleton.

Biever said the Redmond game was an anomaly.

“We came into the game not prepared and didn’t really step off the bus,” he said. “This week we were just ready to go. We faced a lot of struggles with guys being out, guys being gone for spring break, but in the end, we got off the bus and took it to ‘em.”

Biever’s touchdown reception as time expired for halftime seemed to turn the game into Ridgeview’s favor. It appeared Hood River would take an 18-16 advantage into the locker room, but a 47-yard Biever run on a reverse moved the ball to the HRV 12 with 1.8 seconds on the clock. After a Ridgeview timeout, Brenneman connected with Biever as Ridgeview retook the lead it would not relinquish.

“I’m the inside receiver and I have a corner route,” he said. “I knew I could get to the corner. I saw Aiden throw it and as soon as I caught it, I got hit

**Ridgeview 46, Hood River 26**

Ridgeview 8 14 16 8 — 46  
Hood River 6 12 0 8 — 26

HRV — Fletcher 2 run (run failed)  
R — Biever 17 run (Biever run)  
HRV — Fletcher 2 run (pass failed)  
R — Biever 8 run (Biever run)  
HRV — Buckley 50 pass from Hughes (run failed)  
R — Biever 12 pass from Brenneman (run failed)  
R — Jeter 20 pass from Brenneman (run good)  
R — Schwartz 38 pass from Brenneman (run good)  
R — Schwartz 31 pass from Brenneman (Biever run)  
HRV — Hughes 17 run (Fletcher pass from Hughes)

said. “That cost us a couple of touchdowns.”

HRV answered the Ravens’ first score, this time mixing in two Trenton Hughes completions into a nine-play drive, before Fletcher ran it in from the 2 for a 12-8 lead midway through the second period. The pass plays proved an indicator of things to come, as Hughes found Ryles Buckley on a slant pattern and the junior wide receiver raced 50 yards for the go-ahead score with 4:04 remaining in the first half. Ridgeview had matched HRV’s second TD with another Biever run to go ahead 16-12 before Buckley’s catch-and-run had once again given the Eagles the lead, 18-16.

For his part, Fletcher finished with 18 carries for 119 yards before intermission, but the senior halfback was slowed by the Raven defense after the break when Ridgeview seized control.

Brenneman connected with Gannon Jeter on a four-yard touchdown pass with 9:13 left in the third period. Hood River went four-and-out on its next possession and Brenneman and Schwartz hooked up on their first TD connection — this one covering 38 yards. The Ridgeview defense forced another four-and-out, and two plays later Brenneman threw to Schwartz for 31-yard catch-and-run score. The sophomore quarterback was an efficient 7-for-9 passing for 109 yards, registering TDs on nearly half of his throws.

and luckily I held on.”

Biever said the Ravens had the advantage against a Hood River line that includes two future college players, including 285-pound Oregon State signee Henry Buckles. “The line, they went off this game,” he said. “Especially from last game against Redmond where I feel like we struggled a little bit in the running game. We proved we can be a running team.”

The same could have been said about Hood River, at least in the first half. Both teams were successful on their first two offensive possessions. The Eagles received the opening kickoff and scored after nine Tanner Fletcher running plays covered 56 yards. Ridgeview answered with Biever, who capped the Ravens’ initial drive of 58 yards in 10 plays with a 17-yard TD scamper. Biever carried on all but three plays of the drive, and his conversion run gave his team an 8-6 lead.

Conversion runs figured huge in the back-and-forth first half. Ridgeview was 2-for-3 on points-after touchdowns before intermission, while HRV failed on all three of its first-half attempts.

Buckles tipped his helmet to Ridgeview, which took advantage of its opportunities. “We made some mistakes defensively and a couple mistakes offensively,” he



Mark Morical/Bulletin file photo

**Virtual History Pub — Still Waters Run Deep, What Mountain Lakes Reveal will take place 6-7 p.m. on Monday through the High Desert Museum’s website.**

## Calendar

### Continued from P1

#### THURSDAY 4/1

**LWV Deschutes First Thursday — Phil Chang on Wildfire:** The Deschutes Commissioner will discuss wildfire risk, management and protection; 11:45 a.m.-1 p.m.; online; [go.evvnt.com/742166-0](http://go.evvnt.com/742166-0) or 206-390-8507.

**Inappropriate Craft Party:** The craft night will include options to make a private joke sign, naughty socks and more. 18 and older with a sense of humor; 6-8 p.m.; \$20; Meandering Maker, 160 NE Seventh St., Prineville; [go.evvnt.com/758758-1](http://go.evvnt.com/758758-1) or 541-362-1114.

#### FRIDAY 4/2

**Virtual Coffee Clatter with Brookdale Senior Living:** The Redmond Chamber of Commerce will lead a virtual discussion with the senior living facility via Facebook Live; 8:30-9:30 a.m.; online; [go.evvnt.com/758658-0](http://go.evvnt.com/758658-0) or 541-923-5191.

**Juju Eyeball:** The Beatles tribute band will perform; 7-10 p.m.; The Horseshoe Tavern, 410 N. Main St., Prineville; [go.evvnt.com/758749-0](http://go.evvnt.com/758749-0) or 541-447-9932.

#### SATURDAY 4/3

**MountainStar’s Bunny Bun Run:** Bust out your best bunny costumes and join MountainStar and friends for a virtual family fun run. All proceeds benefit MountainStar Madras child abuse prevention mission; 9:30 a.m. through 5 p.m. through April 4; \$20; Madras; [go.evvnt.com/753704-1](http://go.evvnt.com/753704-1) or 541-410-4032.

**CASA Training — Be A Voice for Kids in Foster Care:** Free virtual training

to become a Court Appointed Special Advocate for kids in foster care; 9:30 a.m.-12:30 p.m. through May 22; online; [go.evvnt.com/743018-0](http://go.evvnt.com/743018-0) or 541-389-1618.

**Spring Gardening Seminar — Avoiding the Green Meatball, How to Prune Flowering Shrubs:** The seminar hosted by the OSU Extension Service and presented by the Central Oregon Master Gardener Association will cover tips and tricks to pruning; 10-11 a.m.; \$5; online; [go.evvnt.com/758717-1](http://go.evvnt.com/758717-1) or 541-548-6088.

**Spring Gardening Seminar — Producing Blueberries and Raspberries in Your Home Garden:** The seminar hosted by the OSU Extension Service and presented by the Central Oregon Master Gardener Association will cover how to grow the berries in your personal gardens; 1-2 p.m.; \$5; online; [go.evvnt.com/758720-1](http://go.evvnt.com/758720-1) or 541-548-6088.

**Matt Borden:** The country musician will perform on the outdoor stage; 6:30-9:30 p.m.; \$10; General Duffy’s Waterhole, 404 SW Forest Ave., Redmond; [go.evvnt.com/758704-1](http://go.evvnt.com/758704-1) or 541-527-4345.

#### MONDAY 4/5

**Virtual Natural History Pub — Still Waters Run Deep, What Mountain Lakes Reveal:** The sediment at the bottom of mountain lakes can hold clues about life thousands of years ago; 6-7 p.m.; registration required; online; [go.evvnt.com/739155-1](http://go.evvnt.com/739155-1)

#### TUESDAY 4/6

**Redmond Virtual City Council Meeting:** A regular meeting will be held; 6-8 p.m.; online; [go.evvnt.com/758657-0](http://go.evvnt.com/758657-0) or 541-923-7710.

**Tuesday Night Trivia:** A weekly trivia night will be held. Masks and social distancing required, free to play, winners can receive gift cards; 6:30-8:30 p.m.; Initiative Brewing, 424 NW Fifth St., Redmond; [go.evvnt.com/758682-0](http://go.evvnt.com/758682-0) or 541-527-4380.

**Joshua Tree National Park Ranger Talk:** Learn about this unique desert ecosystem with National Park Service Rangers; 6:30-7:30 p.m.; registration required; online; [go.evvnt.com/758665-1](http://go.evvnt.com/758665-1) or 541-312-1029.

**FIND IT in the SPOKESMAN CLASSIFIEDS**

the Redmond Spokesman CLASSIFIEDS

your community marketplace to place an ad call 923-3725

**FIND IT! BUY IT! SELL IT!**

923-3725 or classified@redmondspokesman.com

**Ways you can support Thelma’s Place:**

- Vehicle donations
- Cash donations
- Sponsorships
- Volunteer

**Thelma’s Place**  
BRIDGING THE GAP BETWEEN GENERATIONS

**Whoopsy Daisy CHILD CARE**  
AN INTERGENERATIONAL PROGRAM

**Your support makes a difference!**

Redmond: 541-548-3049  
Day Respite and Support Groups  
[www.thelmasplace.org](http://www.thelmasplace.org)

**State Farm**

**Joe A Lochner Insurance Agency Inc.**

Joe Lochner, Agent  
123 SW 5th Street  
Redmond, OR 97756  
Bus: 541-548-6023  
[joe.lochner.h5mi@statefarm.com](mailto:joe.lochner.h5mi@statefarm.com)  
Fax: (541) 548-6024

State Farm, Bloomington, IL 1211999

**MORE THAN 100 YEARS OF COMMUNITY COVERAGE**

**Spokesman**

Bistro nearly ready to open

## SUBMISSIONS

### LETTERS AND COLUMNS

Join in on the topics we’re covering. The Spokesman welcomes letters to the editor and guest columnists. Submissions may be edited or rejected for clarity, taste, libel and space. They must be signed and include an address and a telephone number where the writer can be reached during business hours. Full addresses and phone numbers will not be published. For more information, call 541-633-2166.

To submit, email is preferred: [news@redmondspokesman.com](mailto:news@redmondspokesman.com). Submissions can also be mailed to: P.O. Box 6020, Bend, OR 97708

### MILESTONES

Email [news@redmondspokesman.com](mailto:news@redmondspokesman.com) to request an engagement, wedding, anniversary or birthday announcement form. For more information, call 541-383-0304.

To ensure timely publication, The Spokesman requests that forms be submitted within one month of the celebration.

### OBITUARIES

Death Notices are free and will be run for one day, but specific guidelines must be followed. Local obituaries are paid advertisements submitted by families or funeral homes. They may be submitted by phone, mail, email or fax. For deadlines or other information, call 541-385-5809.

**PRIMARY CARE**

NOW SCHEDULING NEW PATIENTS FOR SAFE IN-PERSON OR TELEMEDICINE VISITS

**SUMMIT MEDICAL GROUP OREGON**

**I love my doc.**

Our family’s health is essential, especially now. That’s why we rely on Summit Medical Group Oregon Primary Care. They provide us with the highest quality, personalized care to keep us all healthy and safe. I love my community. I love my lifestyle. I love my doc.

Central Oregon’s largest physician-led multispecialty medical group  
541-706-2319 | [smgoregon.com](http://smgoregon.com)

Dr. Brott