

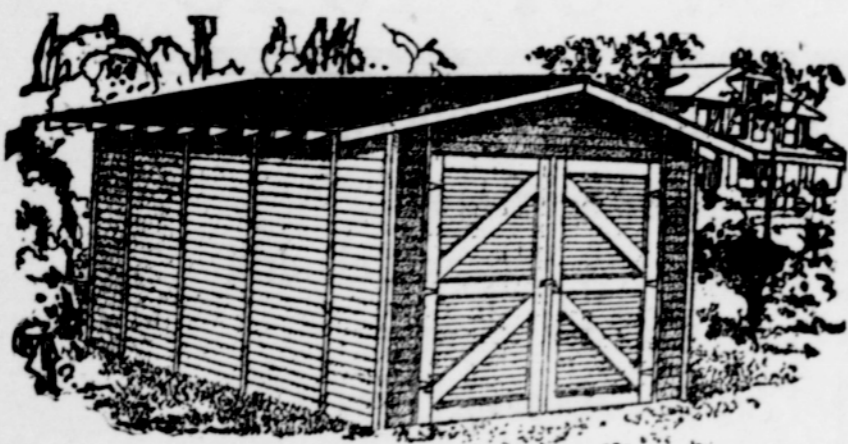
The DAWN of OUR NEW IDEA in BUILDING



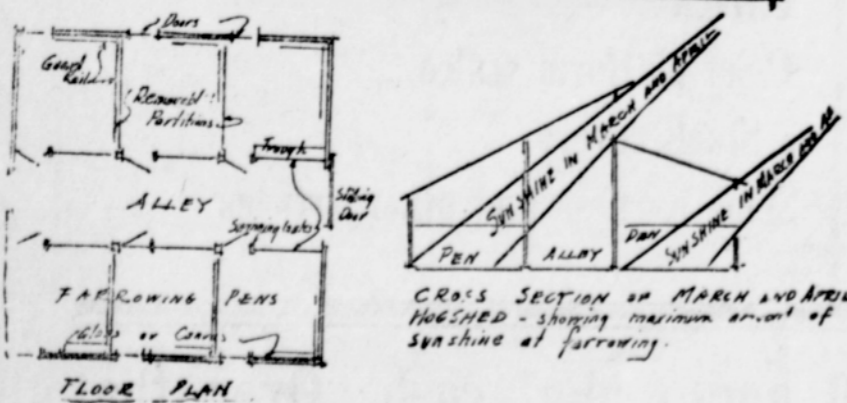
It took 710 bushels of wheat to buy this home in 1914. It takes 400 bushels of wheat to buy it in 1918.



Crop from 18 acres would buy this home in 1914. Crop from 10 acres will buy it in 1918.



130 dozen eggs in 1914 would buy this garage. 80 dozen eggs in 1918 will buy this garage.



It took 40 hogs to buy this bungalow in 1914. It takes 24 hogs to buy this bungalow in 1918.

High Priced Crops Low Priced Lumber

The average rise in prices of building materials has amounted to about 30 per cent. The rise in prices of farm and many manufactured products has amounted to from 100 to 300 per cent.

Think of it! With the same quantity of wheat, corn, oats, alfalfa, hogs, etc.—as before the war, you can build two houses, two barns, two chicken sheds, two anything—Your farm products will buy twice as much honest, serviceable, workable

Tum-A-Lum Lumber

as they would three years ago—wouldn't it be the part of wisdom to build or remodel NOW whatever may be needed. A new house a barn, a garage, a grain bin, a corn crib, an implement shed, a hog house, a Tum-A-Lum Silo, a chicken house? The best investment one can make is in better buildings—means more and greater profits.

Prices Will Not Drop For Years

unless there is a general panic—and you would be the last to want them to drop! But the chances are building materials will rise. Reconstruction, higher costs—resuming industries forced out by war will do it.

More Building Now Per Dollar Why Wait?

These are prosperous times—BILLIONS being spent—with greater times coming. Buildings needed now will produce a rental proportionate to their cost.

Build Better Buildings for Less Money

Building by guess is now practically a thing of the past—We can work your building out on paper and save you a good bunch of money. You pay the lowest possible price and in addition you get the service of experts, architects and engineers—who have made building their life work.

Build From Accurate Plans

Our architectural department prepares plans and estimates. We tell you EXACTLY how much your building will cost before you spend one cent—Blue prints and material lists furnished showing where every piece of material goes—no guesswork—no extras—our guaranteed material price covers ALL the material necessary.

Ask to See Our Plan Books

We have prepared books of plans for all buildings, containing many designs recommended by leading Northwest authorities, most all of which have been built one or more times. Ask for our special silo, elevator and farm granary folders. You can save money now—putting it off simply means that the material you are going to need will cost more money—planning will have to be done in a rush—material will have to be hauled when teams and railroads are working overtime. Hundreds lost money last year by not buying in January and February.

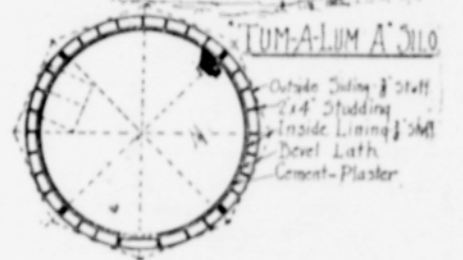
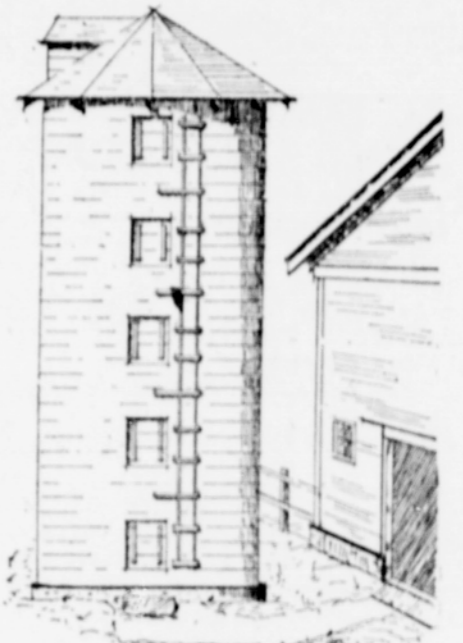
Come in Today. Talk it Over With us

See our pictures, plans, cost estimates—no obligations to buy, as we are glad to be of service.

Tum-A-Lum Lumber Co.

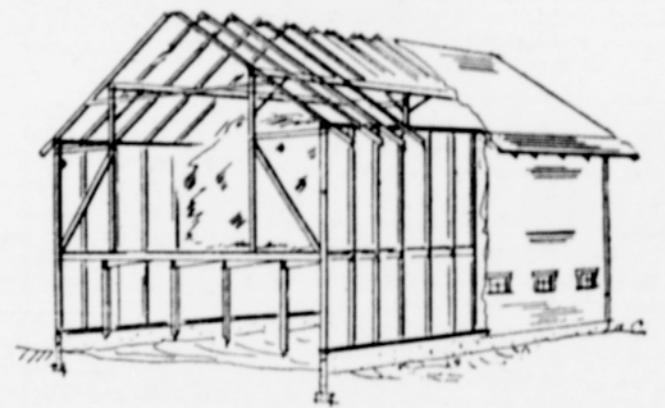
Right Now is the Greatest Time in History To Build

Not since the Civil war have the prices of farm products been so high—wheat, corn, alfalfa, rye, barley, oats, hogs, cattle, sheep, have doubled in price, and in some cases trebled. It's time to make permanent improvements. A new house or barn at half price!



TUM-A-LUM SILO

1914 price—220 bushels corn.
1918 price—110 bushels corn.



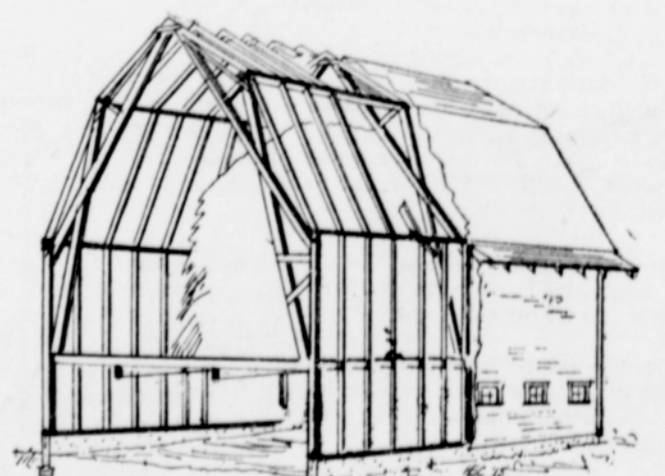
STRAIGHT ROOF BARN

1914 price—36 tons alfalfa.
1918 price—18 tons alfalfa.



CIRCLE ROOF BARN

1914 price—15 tons barley.
1918 price—10 tons barley.



TUM-A-LUM SELF-SUPPORTING GAMBREL ROOF—PLANK TRUSS TYPE

GAMBREL ROOF BARN

1914 price—1000 bushels wheat.
1918 price—600 bushels wheat.