

# The Des Chutes Power Co.

During the past year the Deschutes Power Co., a corporation of business men of Spokane, Wn., have completed and put in operation in this part of Crook county an electric system second to none for one of its size and capacity.

The power units now in operation are located at the plants at The Cove on Crooked River, and at Cline Falls on the Deschutes River, 4 miles west of Redmond. At both of these plants practically an unlimited amount of power can be generated when the resources in sight are all developed.

The engineering difficulties of installing the Cove plant, which is the main plant of the company (the Cline Falls plant being used as an auxiliary) were many, but the feat

amounting to 30 horse power, are in use in the city, including a 5-horse power motor for driving laundry machinery, and a similar motor for operating the ventilation plant in the public schools. By the use of this motor the operating expense has been cut in two, in comparison with the gasoline engine formerly used. A concrete pump house has been built there in which a 25 horse power motor will be installed on a Dean Triplex pump, and a 75 horse power motor on a Worthington centrifugal pump, to be used for fire protection. The Deschutes Power Co. has practically rebuilt the entire distribution system in Prineville, and now has a lighting and power system in that city second to none in the state.

In Culver a 10 horse power motor and a 1 horse power motor are in use in the Topping Warehouse, and the machinery in the garage is also operated by power furnished by the company.

The company furnishes a continuous 24 hour service, which makes it possible to meet all conditions where power and light is needed.

The Cline Falls plant is used as an auxiliary system and can supply the entire district covered by the Cove plant should anything happen to put that plant out of commission temporarily or otherwise. The Cline Falls plant in season, is used primarily to pump water for irrigation purposes to water land on the west side of the Deschutes river.

the minstrel show on New Years eve. A space has also been provided for a moving picture machine. Mr. Wimer has the moving picture machine ready and will soon start operations.

The board of directors elected are as follows: J. N. B. Gerking, F. N. Wallace, J. W. Brown, J. B. Wimer, C. J. Mook, F. B. Wilson and J. J. Coen. The directors met and elected the following officers: J. N. B. Gerking, president; J. W. Brown, vice president; F. N. Wallace, secretary; J. B. Wimer, treasurer. They will proceed to incorporate under the name of "The West Side Agricultural Fair Association," and will organize as a non-dividend paying corporation. Until such time as the incorporation is completed Mr. Wimer will act as trustee and have charge of the building. As soon as the association can hold property the lots will be deeded to them by the townsite company, and the association can then secure money to pay some of the bills, giving the property as security.

FREE AIR

FREE AIR

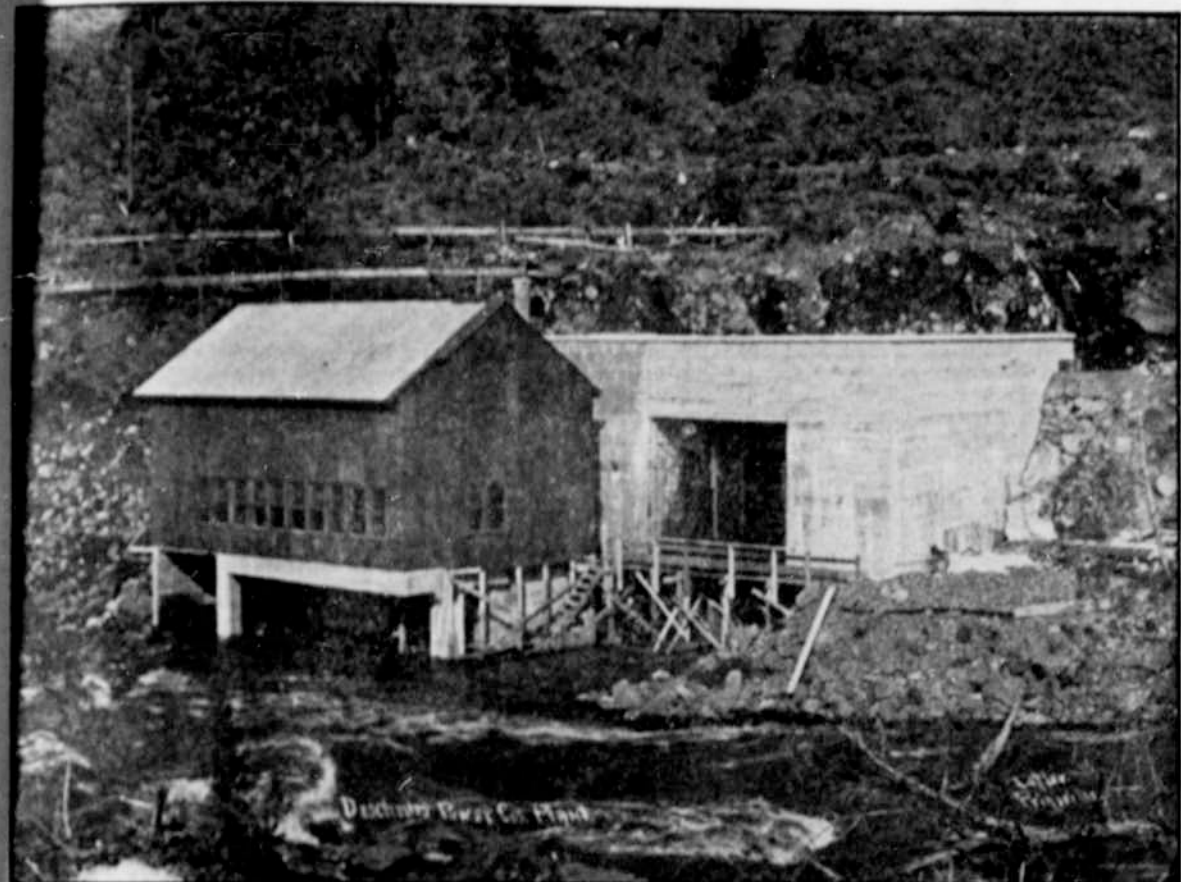
## Central Oregon Garage "REEDY'S"

Now is the proper time to consider buying those NON-SKID TIRES for your car. Let us give you prices on any make. These tires will give you an increased mileage plus the safety factor.

PHONE 704

FREE AIR

FREE AIR



Exterior view of Forebay of the Deschutes Power Company's Plant at The Cove on Crooked River, also showing Power House of the Plant.

was accomplished and that plant is now equipped with all the latest machinery and devices for the economical generating of power and electricity from water power.

The first unit at The Cove to be put in operation is of 750 horse power capacity, and the Cline Falls plant develops 125 horse power as at present constructed.

At this time the company has 70 miles of transmission lines in the county, and 15 miles of a 2300 volt distributing line in the Crooked River valley to furnish light and power for the farmers.

The company furnishes power and lights to the towns of Prineville,

The electric power distributing system of Redmond furnishes electric light and power to all business houses, residences, and all the commercial manufacturing plants of this community.

The Redmond street lighting system is the best that can be had. A series incandescent 100 candle power system combined with a series Arc lighting equipment complete, has the town well lighted.

The latest electric power that has been installed in this district has just been completed by the Power Co. having equipped the Redmond Feed & Mill Co. with an up to date electric power system to take care of

Following are the officers of the Deschutes Power Co.:

Prest.—Samuel Galland, Spokane, Wn.

Vice-Prest.—W. C. Sivyver, Spokane, Wn.

Sec.—Treas.—Bert L. Sivyver, Spokane, Wn.

Gen. Manager.—L. M. Simpson, Spokane, Wn.

Gen. Supt.—C. L. Shattuck, Prineville, Ore.

Following are the officials in charge of the local plants in Central Oregon:

Prineville—C. L. Shattuck, superintendent; H. W. Howard, commercial agent.

### THOS. W. LAWSON SENDS CAR LOAD OF XMAS GIFTS

Thos. W. Lawson, the "Frenzied Finance" author, has sent out a lot of Christmas gifts in a special freight car, to his grand children, the children of Mr. and Mrs. Henry McCall, who live on a ranch a few miles from Redmond. The gifts are:

One hundred and fifty Plymouth Rock and Rhode Island hens, with a couple of roosters.

Two Siamese cats.

Two English bulldog pups, names to be supplied by grand children.

Five Jersey and Holstein cows.

Two sons of champion "Flying Fox's" son, a prize winner.

### THE COUNTY BUILDING UP

G. W. Wells of Powell Butte, one of the county road viewers, is in Prineville today, says the Prineville Journal of the 18th. Mr. Wells says it's a caution how the county is progressing. His duties, he says, takes him to all parts of it several times during the year, but he cannot keep up with the march of events. New people coming in all the time, and people with money. All of them are improving their places.

### HIS RISE TO POWER

Continued from page 6

ives he had snatched or taken in his crusade—to what end? Their places had been taken by other men of like kind, the world no better, no wiser, so far as he could see. Behind the troop marched a regiment of men and women, his neighbors, whose little savings would be lost, did the bank fail through his disclosures, but might be preserved if Murchell's promise to intervene was kept. Was there not more virtue in mercy than in punishment?

For long, in the fear of the man who knows himself weakening, he refused to face the crucial fact. But he had to come to it—to her—at last. He saw her as he had last seen her, the rose in bloom, a strong woman refined and softened by some heart process of which he knew nothing. If he went forward he must cloud the splendor and beauty of her womanhood with disgrace and suffering. He revolted against the thought—why must she, innocent, and at his hand, be made to suffer the penalty that others had earned? Could he strike the blow? It made no difference that she had flouted him for unworthy things. As once before nothing that she could say had added to the temptation that lay in her very existence, so now nothing that she had done could take from the fact of his love. For it lived. He could find through the years in unceasing work an anodyne to deaden the ache, but on this Mount Olivet it lived again, a throbbing passion that submerged all things else. He had not the strength of God, he told himself. He could not be so merciless to her, to himself.

He fled homeward in the waning light and prayed feverishly for daylight.

By his window, as once he had watched a dawn of promise, he saw it come, but without promise. At last, the battle ended, too tired to seek his bed, he fell asleep in the chair.

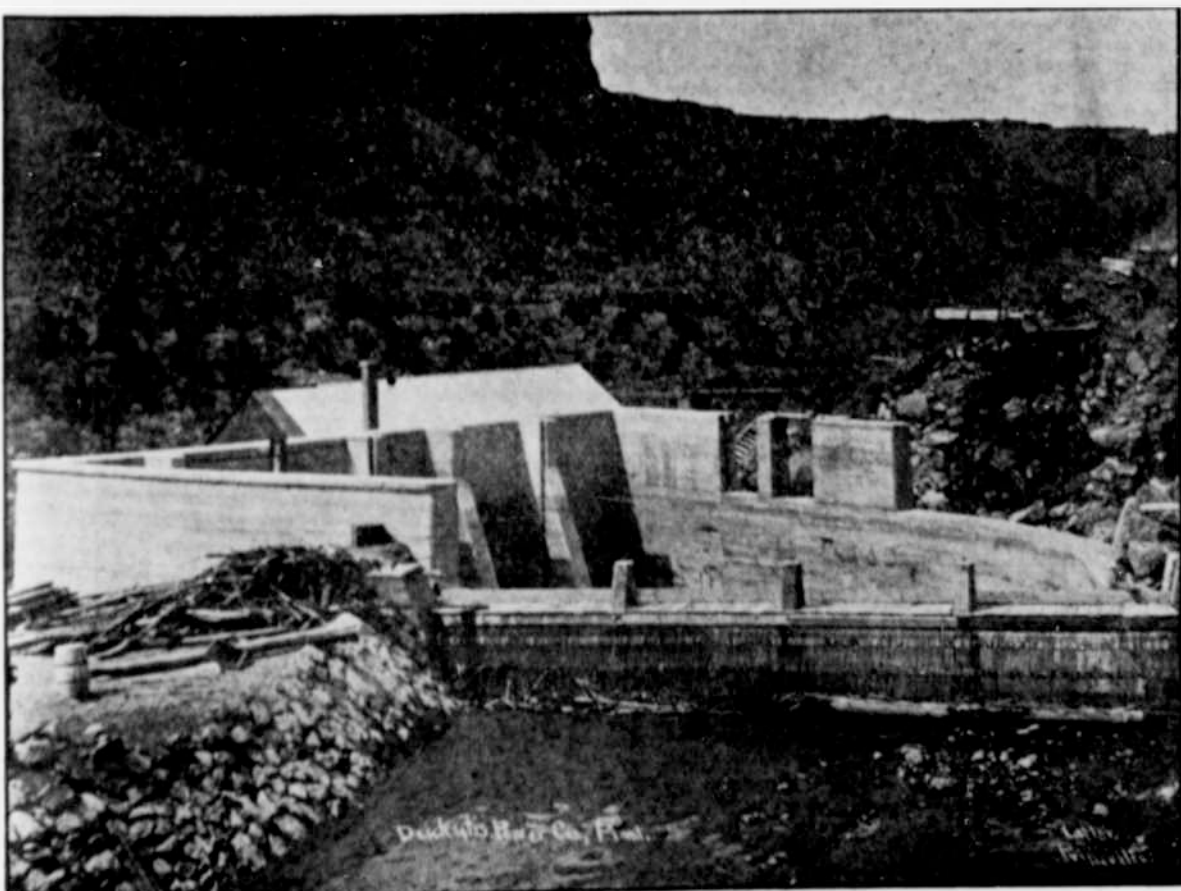
(To be continued.)

### J. F. HOSCH, M. D. PHYSICIAN and SURGEON

OFFICE:  
N. E. Corner 6th and E Sts.  
Redmond, - Oregon

### F. H. RODEMEYER PHYSICIAN and SURGEON

Eyes Tested. Glasses Properly Fitted  
Office in Ehret Bros. block  
Redmond, - Oregon



Interior view of the Forebay of the Deschutes Power Company's Electric Light and Power Plant at The Cove on Crooked River—Main Plant of the Company.

Redmond, Madras, Metolius and Culver. In these towns power is now being used by flouring mills, cold storage plants, printing offices, wood and iron working plants, creameries, butchers, garages, heating plants, etc. All of the above towns use street lighting except Culver.

Power is used in the Crooked River valley primarily for irrigation, chopping alfalfa hay and making alfalfa meal, and for feed chopping. Approximately 100 horse power is now used in this section, and the prospects are that as much more will be used the coming year.

In Prineville the cooking in the Domestic Science department of the High School is all done by electricity, in addition to a number of other cooking installations. Eight motors,

their increasing business.

With one of the cheapest power rates in the state, Redmond furnishes the best facilities in inducements for any kind of manufacturing industries in Central Oregon. With its central location, surrounded by good fertile, tillable lands under immense irrigation ditches, its abundant amount of the best and purest water, with a climate that is unexcelled, and its railroad connections, Redmond is bound to come to the front in the near future as a commercial and manufacturing center.

In Madras the company furnishes power for operating the city water works. The flour mill there is equipped with a 35 horse power motor, and several other smaller motors are in use in different plants in the city.

Redmond—R. L. James, superintendent.

Madras—L. E. Hyde, superintendent.

The Culver and Metolius business is handled from Prineville and Madras.

### OFFICERS ELECTED FOR FAIR Stockholders of Laidlaw Fair Elect Officers and Directors

Tumalo Times: The stockholders of the Laidlaw Fair Association met Saturday afternoon and elected a board of directors and decided to incorporate. The fair building is now practically finished but there are several things that could be done yet toward making it better and warmer. The stage has been built, ready for



If you want to SELL your property  
List it with

## "That Man McCaffery"

He doesn't ask an exclusive right; he can sell it anyway

## Furniture

YOU WILL BUY YOUR FURNITURE AT REDMOND. YOU CAN DO NO BETTER ANYWHERE. COME IN AND BE CONVINCED. DON'T WAIT TILL YOU NEED THE GOODS.

C. H. IRVIN, Furniture & Undertaking

## S. D. FOX & CO.

Fine Wines, Liquors and Cigars

Hotel Redmond Bar

## Anderson Bros.' Saw Mill

MANUFACTURERS OF ROUGH AND DRESSED PINE LUMBER. OUR MILL IS THE NEAREST POINT THAT YOU CAN GET HIGH-GRADE LUMBER. OUR PRICES ARE RIGHT.

4 1/2 Miles Southwest of Laidlaw.

## A PERMANENT BUILDING MATERIAL

REINFORCED CONCRETE BUILDING BLOCKS

These blocks are made by the wet process, giving them three times the strength of a machine made block. Persons going to build should see our material before placing orders for any other kind. It will pay them. Estimates furnished on application. Call on or write to

HEGARDT, ELLIOTT & CO., REDMOND, ORE.



## C. H. BAGGOTT'S Quick Delivery Express and Transfer Line

All Orders Given Prompt Attention.

Phones: House, 2603; Stand, 712.

Leave Orders at the Redmond Pharmacy.