

RECEPTION OFFICE

From this large spacious room access is gained to the private office, chapel and hall-way leading to private rooms for relatives and singers.

THE FUNERAL EXPENSE

Is an item of serious consideration in these stringent times. The total footing is determined entirely by the desires or necessities of a family. The entire expense may be made as small as your conditions necessitate or as large as may be desired. Our caskets are all marked in plain figures and we have one price to the rich and poor alike. We have never found a family, no matter how unfortunate, but that some arrangements could be made to care for them. None are too poor to command our services.

QUALITY AND SERVICE

Are the Requisites of Discriminating Patrons

These are the Basic Principles upon which

A. D. Kenworthy & Company

have built their reputation for fair dealing with all classes of patronage

Proximity to Cemeteries enables us to save one-half on Auto Hire. Free use of our large seven-passenger car while making funeral arrangements.

We have a large service chapel and private rooms for family use. Prices as low as \$50.00 if desired.

SERVICE

We have perfected plans for service to patrons which enables us to offer many aids with no expense to them. It is the service you receive that determines largely your degree of satisfaction with any firm that should serve you. It is our policy to lighten the burdens by arranging all the details such as cemetery arrangements, newspaper notices, minister, music, conveyances, etc. All details are so completely and carefully arranged, combined with the many features with which the establishment is equipped, that we are enabled to quietly and smoothly direct a funeral without confusion or mishap. We anticipate your wants and needs and supply them accordingly.

OUR SERVICE DOES NOT END

when the last prayer is finished at the cemetery. We are still at the service of patrons in aiding them to arrange for a photographer, if one is desired, and in many instances we take entire charge of preparing and forwarding life insurance papers. Our experience in this enables us to accurately prepare them, which avoids their being returned for correction and necessitating a delay in receiving the benefits. This service is greatly appreciated by patrons whose employment or suburban residence would make it very inconvenient for them to take the time to expedite the completion of death proofs and affidavits that are required.

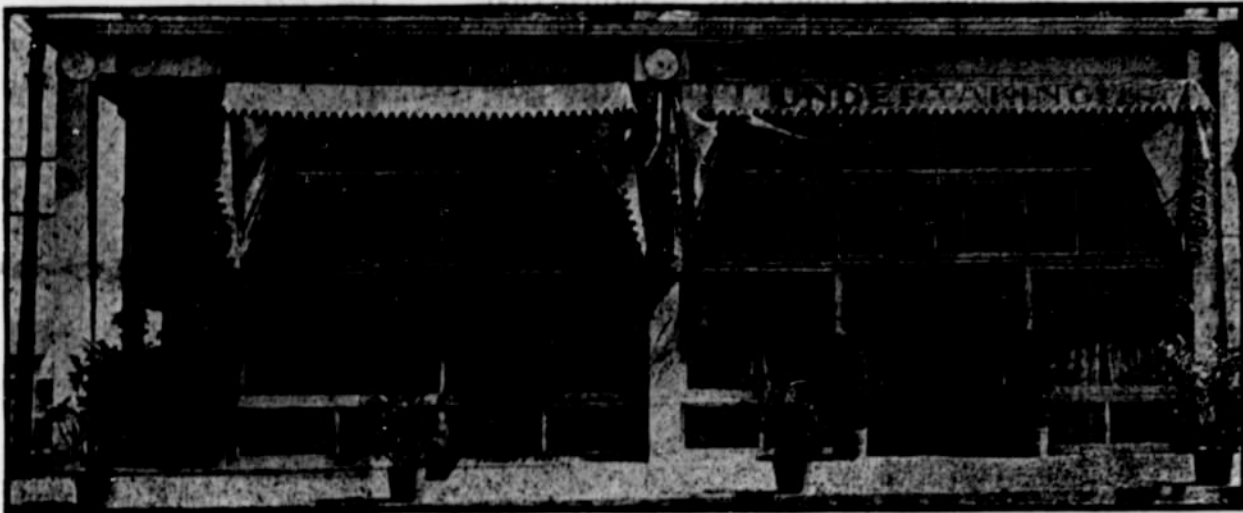


PRIVATE OFFICE

In the privacy of this office relatives are enabled to carefully and deliberately complete funeral arrangements without embarrassment or disturbance. On the right of this office is a comfortably arranged room for attendants who are always on duty, day or night. To the left is a door leading to the show room which adjoins the private office, thus eliminating the necessity of climbing stairways, as the entire establishment is on the ground floor.

CREDIT

Can always be arranged for by those whose conditions make it imperative.



5802-04 92ND STREET S. E., IN LENTS

The location of this establishment is an ideal one for funeral purposes. The building is a concrete structure, which makes it cool in summer and easily warmed in winter. A very important feature is that the concrete structure practically eliminates any likelihood of a fire in the building. The location is 2 blocks north of the car line on 92nd street S. E., which makes it very accessible but on a quiet street. We are one mile from the beautiful Mt. Scott Park Cemetery, and only one mile from Multnomah Cemetery on 82nd street. By virtue of this location we are enabled to furnish automobiles for the service at almost one-half the city prices.

PRUDENT COUNSEL

It is the policy of this firm to seek the real needs of the bereaved family and supply accordingly. It is not advisable for a family in moderate or poor circumstances to engage an elaborate funeral. As much as we may desire to furnish good funerals, we make a practice of advising and counseling such cases to use goods that are in keeping with their circumstances and will not be a burden to pay for. Our patrons are the ones to be satisfied and we would not deserve their confidence if we insisted on their buying something they cannot afford.

CONFIDENCE

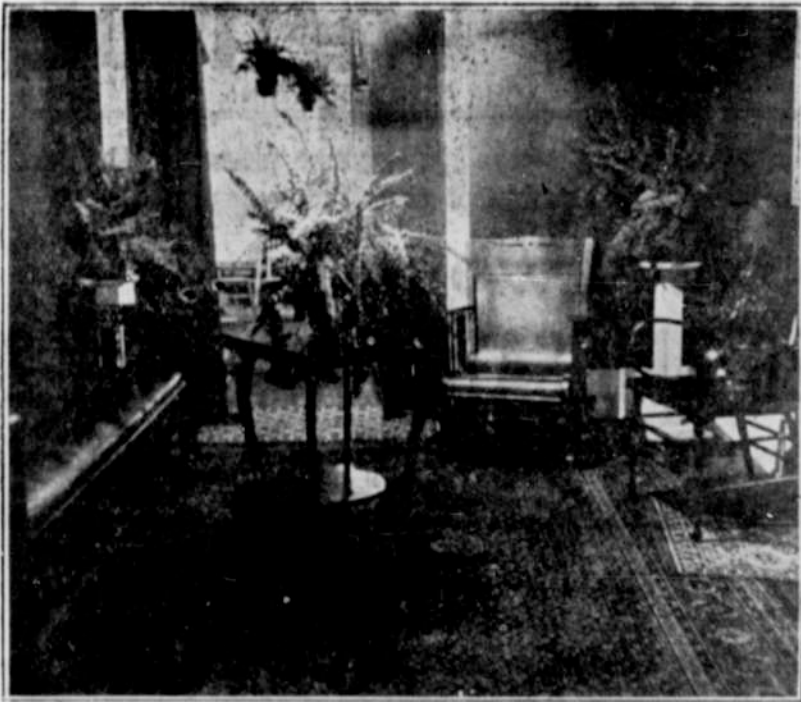
The substantial character expressed in this institution establishes the satisfied feeling of confidence in the service rendered patrons.



CHAPEL

The interior of the chapel is finished in a silver gray color. The furniture is finished to match. It relieves the sombre, gloomy atmosphere attendant on funeral occasions. The chapel is profusely decorated with palms, ferns, and other plants of rare foliage. The appointments of the chapel are ideal for the correct direction of a funeral without the confusion which often attends a church or residence funeral service.

Entrance may be made to the chapel either thru the reception office or from the street. About 175 people can be seated in the chapel



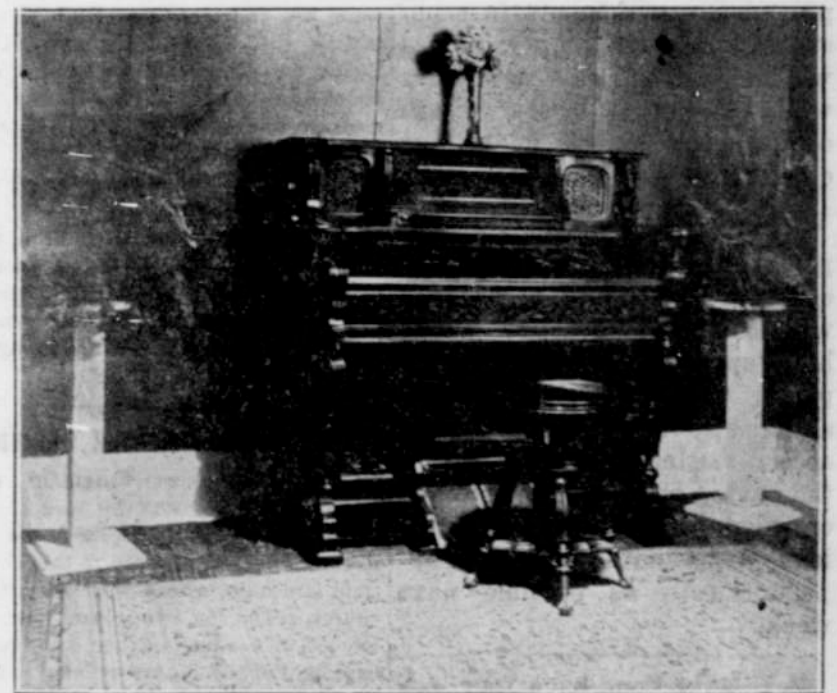
FAMILY ROOM

Entrance is gained to this room thru a private hallway which insures absolute privacy to relatives. Adjoining this room is another room the same size. They are comfortably furnished and resemble the parlor of a private home.



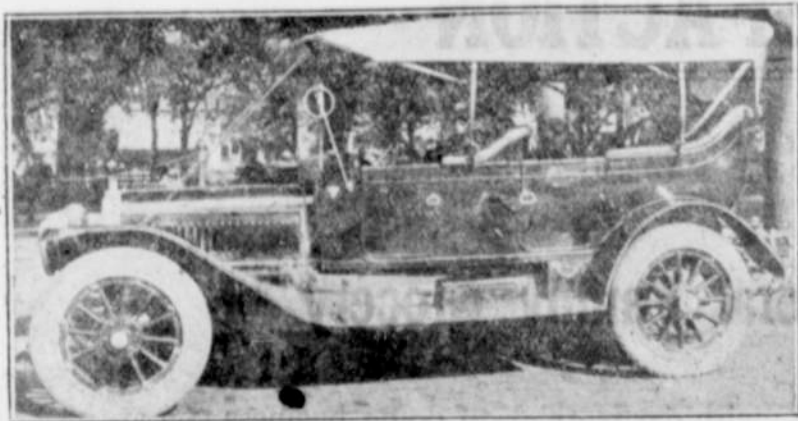
A. D. KENWORTHY

Mr. Kenworthy's experience in this business covers a period of 14 years, the first 10 years being spent in the employ of two of the largest and most progressive firms in Portland, where he learned the value of service and received a thorough schooling in every phase of the business. Mr. Kenworthy's personal service assures patrons of entire satisfaction.



MUSIC ROOM

This room adjoins the chapel and is for the singers. Music from an adjacent room sounds much better and is more appropriate than if given in the chapel proper. Every convenience is provided for musicians and signal for music is given by an electric buzzer.



TOURING CAR

This luxurious Winton-Six Seven Passenger car is at the service of patrons while they are waiting on them. The car is used to bring relatives to the office, to make arrangements or take them to the cemeteries or other errands that are necessary in completing funeral arrangements, thus eliminating the necessity of traveling on street cars or walking which is always more or less embarrassing to those in mourning. This feature adds to the policy of privacy which the firm adheres to thruout the entire arrangements.



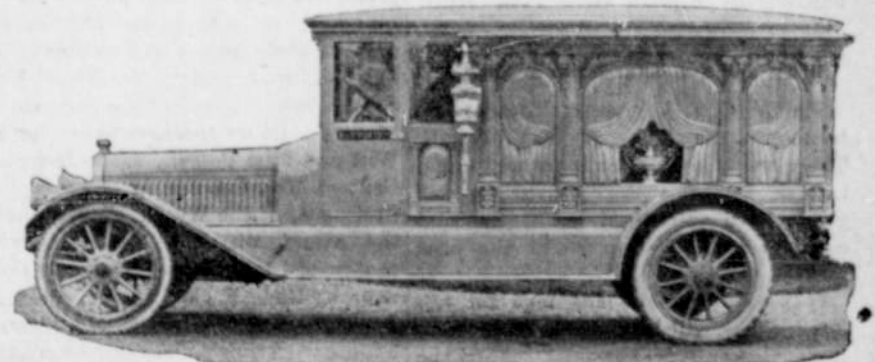
BRANCH OFFICE, 4615 66th St. S. E., at Arleta Station

A. D. Kenworthy and Co.

Funeral Directors

First Class Service Given Day Or Night. Calls Promptly Answered In Any Part Of City. Hospital Calls Given Prompt Attention.

TABOR 5267



HEARSE

Dignified service is either marred or emphasized by the appearance and quality of the auto hearse used. This car is the result of the best material and workmanship, and commands respect and reverence. The body is symmetrically constructed and mounted on a Winton-Six 48-horsepower chassis. The car is equipped with puncture proof tires which eliminates a source of great embarrassment in funerals. Our revolving flower rack prevents floral offering from being disfigured and crushed. It is the only hearse in Portland with this feature.

We hereby extend to all enlisted men who may lose their lives in the service of the nation the offer of the use of our entire equipment and comprehensive service absolutely free of all charges whatsoever