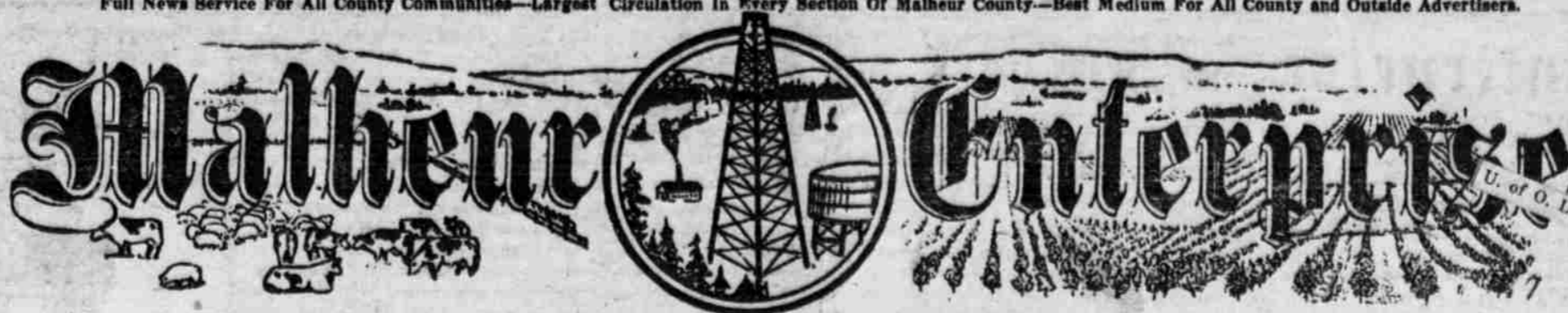


YOUR CO-OPERATION

Suggestions and Support are Solicited to Help Make The "Enterprise" a True Representative of Vale, and Malheur County. Send a Subscription to Friends Whom You Wish to Welcome to This Country. The Enterprise is Absolutely Independent. Treats Everyone With the Same Fairness. It is Always Progressive, and Urges Your Activity in the Development of Malheur County's Great Possibilities. It is Your Paper and is Working to Develop Your Community. Let all the Malheur Towns and Settlements Work Together for a More Prosperous and Better County.



The Home Newspaper, Read in Every Nook of Malheur County.

ADVERTISE IN THE ENTERPRISE

The Only Paper That Circulates Throughout the Whole of Malheur County. It Has More Readers Because It Prints More Reading Matter. People Pay for The Enterprise Because They Want to Read the Best News; the Most Thorough Reports of Southern Oregon Irrigation, Stock, Farming, Oil, Mineral and Community Progress; the Latest Market Quotations; all Fillings in the County Office, Vale District; Malheur County Official Notices; Real Estate Transfers; County Seat News; Correspondent Letters

VOL. X NO. 36

VALE, OREGON SATURDAY, AUGUST 2, 1919.

SUBSCRIPTION \$2.00 PER YEAR

BUILDERS ARE TO RUSH MILL

Contractors on the Ground To Erect Three and One Half Story Flour Mill and Elevator.

Representatives of the Glasser Construction Company arrived in Vale Thursday and will begin the construction of a large and modern three and one half story flour mill and grain elevator on the east side of Main street just south of the Oregon Short Line depot. The contractors have assured Manager Armstrong that the building will be completed in time to have the machinery installed and actual operations under way in October.

The company has made arrangements for use of the National Nitrate Company warehouse and is ready to handle the grain production of the entire south eastern Oregon. Several ranchers have already contracted their crops and the company is prepared to furnish sacks in any quantity.

The new mill will have initial capacity of 150 barrels per day and will be of great benefit to the entire south eastern Oregon section. In addition to establishing a ready and prompt market for all grains, including wheat, oats, barley, and rye, and the making of flour here at home, saving the freight charges on the wheat going out and the flour coming back, it will furnish the farmers and stockmen with mill feed of all kinds. This will result not only in a saving to the present grain ranchers and stockmen but also will stimulate a much larger production of grain and develop the profitable dairy industry as well as encourage the wintering of thousands more sheep and cattle in the Malheur Valley.

WHAT IS A GOOD TOWN

"Growth" in a community—in the sense of becoming bigger should not be the see-it-all in the horizon of the future. The mere counting of noses is too often considered the chief end in civic progress; but if the population of Crane were doubled in one year, says the Crane "American" it would not necessarily mean that we were twice as good a place-in which to live.

If a larger town or city necessarily means a better city, then the large places would be the best for living purposes; but this is not the case. There are great many people who prefer the smaller communities; and there are great many metropolitan centers that are loaded down with evils. As Crane grows larger let there be a continuous and concerted effort to make it better in every possible way.

RAPID RECLAMATION OBJECT OF NEW BILL

Chamberlain of Oregon and Smith of Idaho Propose Government Aid To Districts

States would be set free to proceed with the rapid reclamation of arid, cut-over, swamp and overflow lands for agricultural purposes under a bill which has been introduced in the senate by Senator George E. Chamberlain of Oregon and in the house by Representative Addison T. Smith of Idaho.

Briefly described, this bill authorizes the United States, through the secretary of the interior, to enter into co-operation with any state irrigation, drainage or protection district which enjoys full taxing powers under state law, for the irrigation, drainage or protection of land against overflow. Any district of this character may request the co-operation of the government, which may be agreed to by the secretary, who is authorized to prepare an estimate of the cost of the necessary works. This estimate may include the interest on such estimated cost that would accrue during the time required for the construction of the works, not, however, to exceed four years.

Bonds, bearing interest not exceeding four per cent, may then be voted by the district for the amount of the estimate. They will be deposited in the United States treasury when an equal amount of United States certificates of indebtedness, bearing the same rate of interest and running for the same length of time, will be issued by the secretary and sold to the investing public from time to time as money is needed for construction.

Such construction is to be under the authority of the secretary of the interior. The work will doubtless be done under the immediate supervision of the reclamation service. The as-

New Serial Starts

Beginning this week the Enterprise is publishing Booth Tarkington's latest and best novel of American life, "The Magnificent Ambersons". It is not the policy of this paper to publish the ordinary cheap, trashy novels journals use but we are glad to be able to furnish our readers with good stories from the pens of America's proven authors. Booth Tarkington has written some of the best novels and short stories of recent years and the "Magnificent Ambersons" was awarded the prize for the best story of American life written during the year. Begin the story with the first chapter which appears in this paper, and after you have finished reading it send in your honest criticism, we should like to know if the story pleases our readers and if they would like more of the same high class novels.

DISCUSSIONS STILL CENTER ON LEAGUE

League Remains Much Discussed "Question In Senate—Chicago Riots Call Soldiers"

President Wilson Tuesday submitted to the senate the special treaty with France, by which the United States pledges itself to come immediately to the aid of France in event of an unprovoked attack by Germany. The treaty is almost identical with the one signed by Great Britain and France. President Wilson asked for ratification of the special treaty along with the treaty with Germany.

A continuation of discussions on the league has marked the Senate week. The president has seen numerous of the members in private conference but it is still evident the Republicans have not changed their minds as to accepting the treaty under its present terms.

To Sell Foodstuffs Tuesday the house adopted a resolution requesting Secretary Baker to place on sale all surplus food products held by the war department valued at about \$120,000,000.

The disposal of goods will be carried on thru the postmasters of the country altho a detailed program has not yet been given out.

Riots in Chicago Race riots which centered in Washington D. C. last week are this week raging in Chicago. The negro and white aggressor's using weapons freely in mixups. Friday the death list was placed at 30 and soldiers were killed by Governor Lowden to patrol streets. The arrival of troops somewhat quieted the situation.

Wires Given Back Government control of telegraph and telephone properties ended Thursday at midnight. Orders for their return to private owners were issued Wednesday by Postmaster General Burleson.

OLD LANDMARK MOVED

Fourth Time Old Building Has Been Taken to New Field—Was Formerly Store at Glensville

The old store building on the lots just north of the Court house was this week torn down and moved by Mr. Kennedy recently of Duluth Minn. who has purchased land near Vale, and the lumber will be used for ranch buildings.

Interesting is the story connected with the building for in the early days it was put up for a store building at what was then called Glensville up Willow Creek, by the late 'Uncle Billy' Glenn father of Arthur and Frank Glenn of this city. Later the building was moved to Grove and from there to Vale where it was occupied by various businesses until it was supplanted by the more modern business blocks. The old building has stood the weather well and when torn down many feet of firm lumber were transferred to its new home on the ranch where it will serve for many more years.

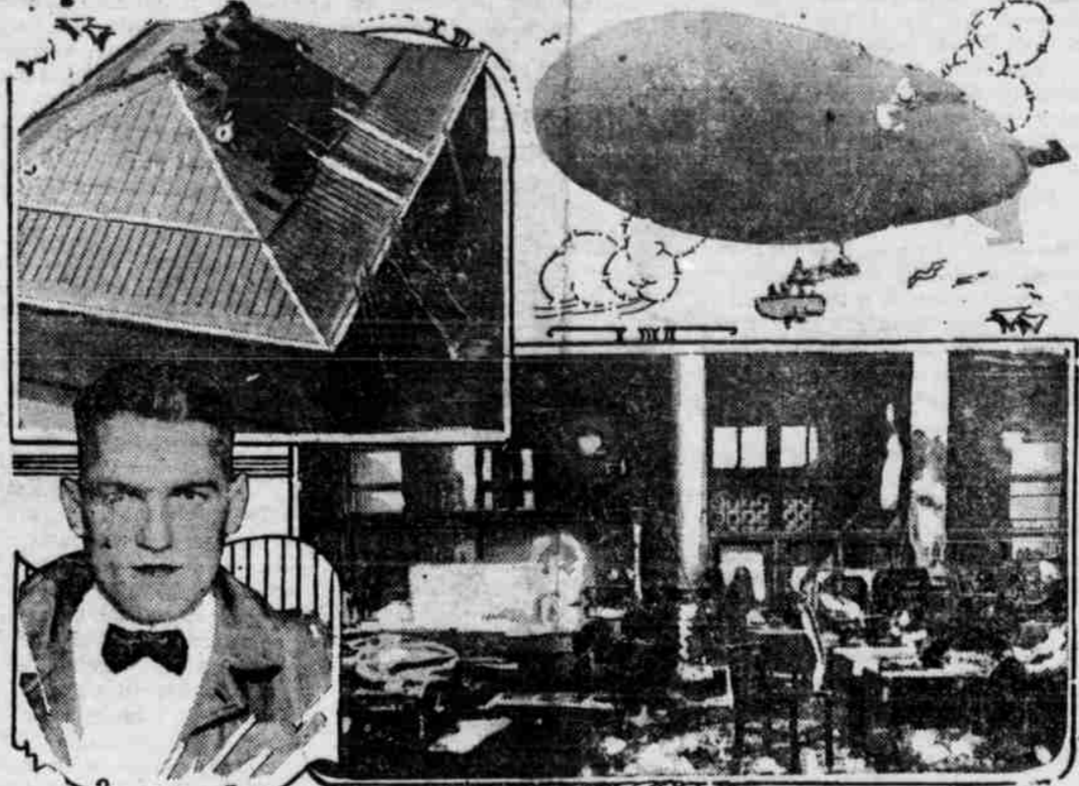
Dr. Bartlett Visits

Dr. Carl J. Bartlett, formerly of Vale, who has been connected with a clinic at Baker since his return from France made a professional trip to Vale Monday.

Every bride is entitled to a house as much as she is entitled to a ring.

Amount of bonds that may be issued for any one project shall not exceed \$25,000,000. The government will collect the interest and principal when due on the district bonds and pay the interest and principal on the certificates of indebtedness.

Crash of Aircraft Through Roof Collects First Toll



The explosion and crash of the big dirigible machine through the skylight of the Illinois Savings and Trust Company at Chicago, resulting in 12 deaths and injuries to 28 other persons, marks an era in which railroad wrecks and boat catastrophes must make way with their limited fields of calamities. Bank clerks and girl stenographers working in the seeming security of the great marble structure were crushed and burned before they could realize danger was near, as the airship plunged through the glass roof. These pictures show the Goodyear blimp before the explosion; the wrecked trust company after the fire; and pilot John Boettner of the air craft, who escaped by leaping with a parachute.

Dentist May Locate

Dr. H. M. Hanavan of Portland was looking over the Malheur valley the past week and is planning on opening a dental parlor in Vale soon.

WARMSPRINGS MEN PURCHASE RANCH

Warm Springs Board Members Jointly Purchase Valuable Tract of Ranch Land Near Vale

R. H. DeArmond and George McLaughlin both well known ranchers of this section and members of the Board of Directors of the Warm Springs Irrigation district, purchased the Tom Harris ranch about seven miles from Vale under the Warm Springs project Saturday July 26th. The ranch tract consists of about 120 acres of which is sown in alfalfa and grain. The consideration is reported to have been around \$10,000.

Proposed Card

Promoter McCabe is now arranging for a big program for some date in August and the proposed "card" includes beside a boxing and wrestling preliminary a ten round go between "Stoney" Williams of Butte and Ferrel Robinson of Canton, both fast 140 pound boxers, with the main event a wrestling match between "Bull Dog" McCarroll of Pendleton and "Crusher Jim" Wilson of Vale.

Ontario Joins Fruitland

Thirty-seven Ontario business men have joined with an equal number of residents of Fruitland in the contract for a summer Chautauqua at Fruitland for the season of 1920. This was the result of the active work of H. H. Tunny and F. Leslie Body who were named by the Commercial club to co-operate with the Fruitland committee to make this year's effort successful.

During all the Chautauqua week at Fruitland Ontario was well represented, and a particularly large crowd went over Monday evening. The number would have been larger had the evening not been so hot.—Argus.

Index

Table with 2 columns: Item and Page Number. Includes 'Late Local and World News', 'Editorial', 'Five Years Ago', 'Clippings From Our Exchanges', 'The Magnificent Ambersons', 'Chapter 1', 'Train Schedule', 'Community News Letters', 'Oregon News of Past Week', 'Local and Personal News', 'Churches and Society', 'Classified Ads', 'Legal Advertisements', 'Land Office News', 'Cultivation of Corn', and 'Our advertisers are all reputable and well established firms; Read the news they have written this week, on every page.'

CONCRETE WORK BREAKS RECORD

All Former Records at Camp Broken For Cement Work—Engineer Manager Visits

During the past week all previous records for pouring concrete have been broken at the construction camp on the Warm Springs dam site at Riverside where the big dam is rapidly approaching completion. An average of 263 cubic yards of concrete were poured per day the past week, the working day being nine hours. This schedule was maintained throughout the week using 5288 sacks of cement, or an average of 0.84 bbl. per cubic yard of cement, according to reports of Engineer Manager John H. Lewis who visited the camp last week. During the past month 4656 yards were placed in twenty four working days, or an average of 194 cubic yards per day. The estimate of the work for the coming month is that the past months record will be greatly exceeded and completion of the big dam is looked for early in October.

Water was turned out of the Nevada Ditch early this week and an executed agreement between the Nevada Ditch Company and the Board of Directors of the Warm Springs District has been received. Under this agreement as soon as the ditch is dry enough work will be commenced on its enlargement.

The necessary pressure pipe for the Nevada and Willow Creek pumping units, various steel flumes for the Bully Creek crossing were ordered the past week.

Pay Water Rent

Do not forget to pay your water rent before tenth. City Recorder J. D. Rogers will be in his office in the Chamber of Commerce or Council rooms each day from 10 a. m. to 3 p. m.

COUNCIL CONSIDERS WEEDS AND WATER

Committee Appointed to Prospect For More Water Near Springs—Must Cut Weeds

At the adjourned meeting of the city council Wednesday evening Attorney Robt. D. Lytle appeared before the council and urged the immediate enforcement of the state and city laws requiring the cutting of weeds. The marshal was ordered to notify property owners that they must rid their premises of all noxious weeds and keep the weeds off the walks and streets in front of their property.

It was also decided to prohibit the running of motorcycles, trucks and cars without mufflers within the city limits.

After hearing the report of the Citizens' committee in regard to conditions at the Willow Springs and considerable discussion as to the best plan of procedure, the Council appointed a committee of H. R. Dunlop, T. T. Nelson and C. W. Nelson for the purpose of following out the suggestions of the committee to sink a well at the intake in an attempt to increase the water flow.

The emergency well in town will be completed in a few days and will be needed to supply the city while repairs are being made on the pipe line.



Kesslers Return

A. J. Kessler, wife and son returned home Wednesday after a month's trip thruout the Northwest visiting Butte, Montana, Portland, Oregon and the coast during the trip. "I am glad to get back to Vale", said Art as soon as he arrived. "Good old Vale is good enough for me. Vale has the best people, the best spirit, the best future, the best climate of any city in the Northwest. And say boy, I never saw a real field of alfalfa on the whole trip like we raise in the Malheur Valley". Mr. Kessler thinks that the best medicine to feed the local knockers and agnostics is a little trip to the "outside".

Mr. Kessler saw the big forest fires at Missoula, Montana where the smoke hid the sun for three days and where millions of monarchs of the hills were destroyed.

COMMITTEE REPORTS FINDINGS AT INTAKE

Committeemen Report on Water Situation at Luncheon—Armington Says Clean Up Town

In opening the program of the Tuesday Businessmen's Luncheon this week Chairman J. P. Dunaway called on H. R. Dunlop as chairman of the Citizens' Committee appointed last week by the mayor to investigate the supply of water at the intake and the condition of the pipe line. Mr. Dunlop said that the committee had not formulated its report but he would give his personal views about the situation. T. T. Nelson and Leonard Cole, other members of the committee, confirmed Mr. Dunlop's report. There is little question but that a large amount of water is seeping into sand hollow from the level of the intake according to the investigations made and the concrete wall that was once undertaken should be completed to shut-off this loss. Another matter that should be attended to is to lower the intake several feet so that it would be nearer on the level with the main supply of water. That is one of the chief difficulties of the intake as it is six or eight feet higher than it should be. However the pipe line after it leaves the ravine raises to within two feet or less of the intake level so even at the present height of the head there is practically no getaway or fall in the first mile of the pipe line. For the present time a motor and pump could be installed at the intake and when a large supply of water has been developed the course of the pipe line could be extended down Sand Hollow for a mile or so in order to get a good fall at the head and to avoid the high points on the present route.

Mayor Wildhaber commented on the situation and urged all citizens interested to attend the council meeting Wednesday evening when a definite program would be determined upon. He suggested that an expert hydraulic engineer be employed to make a complete report on the many proposals presented by the citizens during the past few weeks.

Warren Armington, manager of the Vale Milling and Elevator Company complimented the people of Vale on the wonderful country back of the city, on the general progressiveness of the people and on the splendid future that is opening up for Malheur County. However he shamed them for the general appearances of the town, calling attention to the ungraded and unkept streets, the rank growth of weeds in the streets and throughout the town, and the "shabby" appearance of some old barns and buildings scattered about town. He recommended that the weeds be cut immediately, that the streets be improved, worn out wooden walks replaced with cement, old houses fixed up or condemned and removed. "Vale is alright, the people are fine but the appearances are not what they ought to be. We become too satisfied," he said, "without real prosperity and forget what kind of impressions we are making on our visitors."

W. J. Pinney of the Oregon Western Colonization company announced that President W. P. Davidson had offered a forty acre tract for the purposes of an experiment station and urged that the Chamber of Commerce get busy in securing same. Robt. D. Lytle was appointed as a committee of one to investigate the necessary procedure and report later.

Dr. C. C. Burrow was appointed to preside at the luncheon for the coming week. It is hard for the chairman to remind everyone each week. Write "Tuesday is Luncheon" on your cuff or windshield or some place where you cannot overlook it and be on hand next week.

WILSON WINS HANDICAP BOUT

Wilson Wins Match Over Camp—Middle Weight Unable to Stand Against Local Man

Any doubt in the minds of local fans as to the ability of Jim Wilson was speedily removed Saturday evening when he defeated Chester Camp of Boise, taking two straight falls in a total wrestling time of four minutes.

About 150 fans gathered in the Rex theater at ten o'clock Saturday evening to see the handicap match scheduled by R. R. McCabe promoter between Chester Camp, of Boise well known and clever middle weight vs Jim Wilson of Vale who earned the title of light heavy weight champion of Camp Lewis.

At ten fifteen referee H. H. Tunny of Ontario announced the terms of the contest to continue until midnight unless won by two falls in a less time. For two minutes the opponents wrestled in the air and altho Camp tried to take several openings to gain advantage on the mat, the superior strength of Wilson prevented. Wilson then throwing Camp off his balance secured a toe hold which he changed quickly for a head scissors from which he worked into a body hold with one arm pinned. Camp attempting to break the hold doubled himself and was crushed under the weight of his opponent, the referee awarding the first fall to Wilson in order to save Camp further punishment. Time three minutes.

Camp was unquestionably injured and suffered a great deal in the fifteen minute intermission but insisted on returning. However his strength was entirely gone and Wilson took mercy on his condition by throwing his as soon as possible. Time one minute.

Everyone felt sorry for Camp who although entirely out classed by his heavier opponent was capable of making an interesting match had he not been injured at the start. Camp hated to be forced out on such short time as he said "I wanted to give the people a good show". Camp was resting easily Sunday but had severely strained cartilage and some mighty sore ribs that will keep him off the mat for several weeks.

As a result of the match Wilson's "stock" rose a good many points and he is recognized as a very capable light heavy weight and a man with whom no middle weight has any business mixing. It has become known that this is the fourth decision in the last eight months that Wilson has won by crushing the ribs of his opponents and from now on will be known as "Crusher Jim" announced promoter McCabe.

COUNTY LEAGUE PLAN EXAMPLE FOR OTHERS

County Development League Being Copied in Other Parts of State—State Chamber Aids

(Editors Note: The following appeared recently in a Portland paper and is self explanatory outside the reference as to the date of organization, the Malheur County Development has been in existence several months and was the prime factor back of the special county bond election last June.

Inaugurating the movement to develop various district organizations working for good roads, better commercial conditions and the general up-building of their particular sections, the Malheur County Development league was formed last week with Robert D. Lytle as president. Linn and Marion counties are now considering the establishment of similar associations.

Citizens of Vale first proposed the formation of the development league, believing that better support could be afforded road issues now confronting the state. Malheur County is the terminus of several proposed road developments, including the Columbia highway, the John Day and Central Oregon highways.

In a letter of the State Chamber of Commerce, Mr. Lytle says that commercially and otherwise, Southwestern Oregon is more a part of Idaho and Utah than it is of Oregon, because of easier means of communication. Believing that such a condition should not continue, the league will work for closer cooperation between Eastern and Western Oregon on road matters. The Malheur Development league is formed of representatives from each of the 25 precincts of the county. The league has requested the state chamber to urge the highway commission to lead all possible aid to the newly formed association.