

# Malheur Enterprise

GEORGE HUNTINGTON CURREY  
Editor and Owner

MALHEUR COUNTY OFFICIAL PAPER

PUBLISHED EVERY SATURDAY AT VALE, OREGON  
Entered at the Vale, Oregon, Post Office as Second Class Mail Matter  
UNITED PRESS SERVICE—Special County Correspondents

Subscription Rates in Advance  
One Year, \$2.00 Six Months, \$1.00  
Advertising and printing prices given on application.

VALE, OREGON, SATURDAY, JUNE 8, 1918

## COUNTY ROAD SYSTEM SHOULD BE WORKED OUT.

Malheur county needs a countywide road system plan. A series of good graveled, graded and drained main roads, giving the maximum practical benefit to every district in the county should be planned and agreed upon. Ontario, Nyssa, Jordan Valley, Vale and the upper Malheur, Bully and Willow Valley communities should all be consulted and provided with a good graveled road connecting with the other graveled roads to be built. If some satisfactory system could be agreed upon and the people were given a chance to vote upon the proposition, there is little doubt but that Malheur county could raise a special road tax to help build these roads. Also the State Highway commission owes us something and we propose that a contract be made with the state whereby state and county each will spend on the outlined state highways \$35,000 per year for five years. In addition the Maney Brothers will match the county up to \$15,000 per year for five years in improving a north and south road thru the county leading from their new project near Jordan Valley to Vale and Ontario and Nyssa. A four mill special tax will raise our part of these fifty-fifty contracts can be made and if voted will mean a half million dollars for construction will be spent on our roads the next five years. Who is fearless enough to take hold of this matter, tie up the state highway commission and go before the people with a measure proposing the required special tax of four mills a year for five years? If the development of the county depends upon better roads, who will take a positive stand and help out the many people in the county who want better roads, but lack any kind of a leader to show them how to get them. This is not a time to pass the buck. It is the duty of someone to get behind and push Malheur county's road problems. We must have better roads. To build better roads we must raise more money. When you can get two dollars of road for every dollar to be raised it is a pretty good time to start in on this road business.

## TWO POUNDS OF MEAT IS GENEROUS WEEKLY ALLOWANCE.

How about your meat ration? The Food Administration wishes to jog your memory in case you have forgotten that you should now be on a meat ration of not more than two pounds per person per week. "We have abolished all our meatless and even our porkless days," says Assistant Federal Food Administrator W. K. Newell, but this was on the distinct condition that we cut our consumption of meat to two pounds per person per week. If we are to avoid the re-establishment of meatless days we must now eat more fish and vegetables and go easy on all meats. This is because our meat reserve is getting low. For a time, because of lack of ships to send the meat overseas, and because our food animals were moving to the markets in heavy volume, our meat reserve accumulated; that was why the meatless days were declared off by the Food Administration. Now conditions are changing. The food animals, with grazing for feed, are not moving so rapidly to the markets, and we are getting more ships for the export of meat. So our reserve is getting low. We must build it up. Eliminate your steaks and roasts and help pile up the meat reserve for our armies and our Allies. This should be easy for everyone at this time of year, with plenty of fresh vegetables and a wide variety of fish. Your physician will tell you it will also be good for your health. Because of these good things you can save without any real sacrifice. Let no one fail to do his or her share towards building up our national meat reserve. If you are not already on the official two pound per week ration, correct this at once for it is very important.

## ORDER YOUR COAL AND WOOD NOW FOR NEXT WINTER.

"Buy Your Fuel Early Week" has been proclaimed by Governor Withycombe of Oregon, for June 3-8. During the week, all civic and business organizations and women's clubs are being urged to call upon their various members and the public in general to order fuel for next winter. There is nothing of a "hurry" nature in the drive for fuel orders, according to Fuel Administrator Holmes of Oregon. "It is a matter to be looked at seriously," he said today, "Oregon faces a fuel shortage this winter, and we are doing everything possible to warn the people so none will suffer from heatless days when cold weather sets in. I urge all people to order their fuel now. This will give us data that will be invaluable in directing distribution of the supplies and will help relieve the troubles connected with production as well."

## BUY SEASON TICKETS FOR VALE CHAUTAUQUA, JUNE 21-26.

Buy season tickets for the Vale Chautauqua. Season tickets cost less than one third the total of single attraction admission charges, and the public spirited people who have signed as guarantors deserve your moral and financial support. Season tickets give you the most for your money, they put you in the Chautauqua supporting class, and they count four to one over single admissions in paying off the guarantee. Be a booster as well as a beneficiary.

During the coming month a campaign will be undertaken in the interests of the War Savings movement which will have many features novel from the usual war drive or campaign. While the first object of the War Savings Stamps movement is to encourage thrift and savings and investment, the incidental incentive attached is the purchase of 2,000,000,000.00 dollars worth of Thrift Stamps and War Savings certificates. This is a national assessment of twenty dollars for every man, woman, child and soldier in America. A program will be announced soon which is intended by the government to popularize War Savings investments and before long we are all going to be face to face with the fact that to raise two billion dollars is more than "kids' play."

## SHOES! SHOES! SHOES!

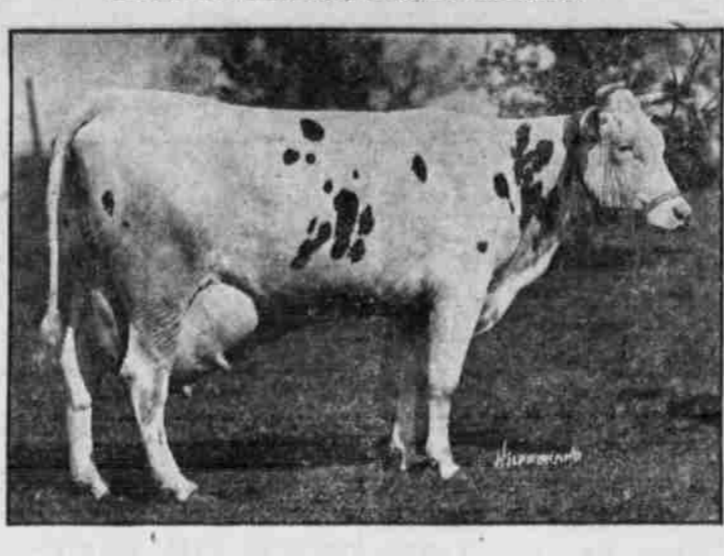
We now have in our entire line of women's and children's shoes. We have styles in the women's shoes that were just put out this spring. Come in and look them over. Mary Jane Canvas Pumps for girls—\$1.50 to \$1.95. Flexible Fitters for boys and girls with 75 day guarantee, sole for \$2.75 and \$3.00.

LADIES' HOSE	
Ladies' Pure Silk Hose all colors	\$1.50 pr.
Ladies' Fibre Silk Hose	75c pr.
Ladies' Lisle Hose	50c pr.
MEN'S SHOES	
Win the War Men's Service Shoes	\$2.95
Win the War Boys' Service Shoes	\$2.85

## VALE SADDLERY COMPANY

Vale Oregon  
We Keep Open Until 8 P. M. Saturday Evenings.

## SUPERBA PALMYRA, RECORD HOLSTEIN



"Food will win the war," and in the first line trenches of the battle of producing the food that is going on in the country are found Holstein cows. Steadily they are increasing their already enormous capabilities to produce milk and butterfat in vast quantities. The latest world's champion of the Black-and-White breed is Superba Palmyra 314141 (Twin), who deserves a medal for breaking the record for butterfat production in the junior three year-old class. She freshened at the age of 3 years, 5 days, and in seven consecutive days produced 655.1 lbs. of milk yielding 38.35 lbs. of butter.

Superba Palmyra's sire is King Segis Pontiac Columbo 105152; her dam is Bloomingdale Hengerveld Palmyra 98725. She was bred and is now owned by Oliver Cabana, Jr., Elma Center, New York.

## JIM'S WAR BREAD

Originated, Tested and Guaranteed by J. D. Rogers.

One quart of water, Generous cup corn meal, Three table spoons lard or four of butter, One and one half cup sugar, One half tea spoon soda dissolved in a little water. When cold add one cup yeast sponge, two cups rolled oats run through a meat grinder or two scant cups oat flour. Let rise then mix to a consistency of bread dough with wheat flour. This dough will keep for a week. Take off enough for rolls for one meal and bake fresh every day.

\*\*\*\*\*  
\* ONLY AMERICA CAN HELP. \*  
\* "On your side are boundless \*  
\* supplies of men, food, and materi- \*  
\* als; on this side a boundless de- \*  
\* mand for their help. \*  
\* "Our men are war-weary and \*  
\* their nerves have been strained \*  
\* by more than three years of \*  
\* hard, relentless toil. \*  
\* "Our position is critical, particu- \*  
\* larly until the next harvest, \*  
\* but the United States can save \*  
\* us. \*  
\* "You Americans have the men, \*  
\* the skill, and the material to \*  
\* save the allied cause. \*  
\* SIR JOSEPH MACLAY, \*  
\* British Shipping Controller. \*  
\*\*\*\*\*

Portland's population is 311,351, according to the estimate given by 1918 city directory. Population last year was 287,000. This shows what industrial development does for a community.

**Beware of Ointments for Catarrh that Contain Mercury**  
Mercury will surely destroy the sense of smell and completely derange the whole system when entering it through the mucous surfaces. It contains no germicidal action and is not absorbed into the blood. It is sold by druggists. Price 75c per bottle. Take Hall's Family Pills for constipation.

**NOTICE TO SUBSCRIBERS**  
Increased cost of paper and all expenses in connection with publishing a newspaper, together with new postal regulations require us to enforce subscribers to pay in advance for the Enterprise. We have already succeeded in getting nearly all of our many subscribers to pay in advance. Now in order to treat these fairly and to maintain the high standard of the Enterprise, EVERY subscriber, in order to continue receiving the Enterprise must pay his subscription of \$2.00 regularly each year, and in advance.

The date to which your subscription is paid is printed each week on your copy of the paper. Watch this date and try to send in the money for the next year's subscription before your time expires, thus avoiding missing any copies. The dates are indicated on your paper just to the right of your name as follows: Jan 9, means the first day of January, 1919, etc. Hereafter we will not mail receipts for subscriptions unless requested, but will advance the date printed on your paper, thus giving you notice that you have received proper credit. As we correct the list but once a month your date may not be changed until a week or so after receipt of payment. We are always glad to correct any errors in your name, address, or the date paid.

**Change of Address**  
In requesting us to change the address of your paper from one post office to another it is necessary that you give the post office where you have been receiving the Enterprise as well as the new address to which you wish it sent. This will avoid your missing several issues and will save a blind search thru the entire list to find your old address. If your paper does not come regularly kindly notify us at once so we can locate the trouble promptly.

## LAND RESTORED TO ENTRY

Department of the Interior, United States Land Office, Vale, Oregon, June 5, 1918.

NOTICE IS HEREBY GIVEN THAT the lands hereinafter described, which were formerly withdrawn under the Carey Act (Oregon Segregation List No. 24) will become subject to settlement, location and entry, on the dates and in the manner hereinafter mentioned and described:

- NW 1/4 NE 1/4, Sec. 25, NE 1/4 NW 1/4, Sec. 26, NE 1/4 SE 1/4, Sec. 27, W 1/2 NE 1/4, Sec. 34, T. 31 S., R. 42 E., W. M. NE 1/4 SW 1/4, Sec. 8, NE 1/4 SW 1/4, Sec. 10, S 1/2 SW 1/4, Sec. 17, SW 1/4 SW 1/4, Sec. 20, Lots 2, Sec. 30, T. 31 S., R. 43 E., W. M.
- S 1/2 SE 1/4, Sec. 26, NE 1/4 SE 1/4, Sec. 28, T. 30 S., R. 44 E., W. M.
- W 1/2 NE 1/4, NE 1/4 NW 1/4, Sec. 10, SE 1/4, Sec. 12, NE 1/4 SW 1/4, NW 1/4 SW 1/4, S 1/2 SW 1/4, SE 1/4, Sec. 14, NE 1/4 NE 1/4 NW 1/4, NE 1/4 SE 1/4, NW 1/4 SE 1/4, Sec. 23, W 1/2 NE 1/4, NW 1/4, S 1/2 SW 1/4, W 1/2 SE 1/4, Sec. 24, NE 1/4 NW 1/4, Sec. 25, NE 1/4 SW 1/4, NW 1/4 SW 1/4, NW 1/4 SW 1/4, NW 1/4 SW 1/4, Sec. 27, NE 1/4, S 1/2 NW 1/4, SW 1/4 SE 1/4, Sec. 28, NE 1/4 NW 1/4, Sec. 31, NE 1/4 NE 1/4 NW 1/4, N 1/2 SE 1/4, SE 1/4 SE 1/4, Sec. 32, All Sec. 33, NW 1/4 NW 1/4, S 1/2 NW 1/4 SW 1/4, Sec. 34, T. 30 S., R. 45 E., W. M.
- NW 1/4 SE 1/4, SW 1/4 NW 1/4, Sec. 1, Lot 4, S 1/2 NW 1/4, SW 1/4, Sec. 3, Lots 1 and 2, S 1/2 NE 1/4, SW 1/4, SE 1/4, Sec. 4, Lot 1, SE 1/4 NE 1/4, E 1/2 SE 1/4, Sec. 5, NE 1/4, SE 1/4 NW 1/4, SW 1/4, SE 1/4, Sec. 6, All Sec. 9, NW 1/4 SW 1/4, Sec. 10, NW 1/4 NW 1/4, Sec. 13, N 1/2 NW 1/4, S 1/2 NW 1/4, NE 1/4 SE 1/4, Sec. 15, NE 1/4 NW 1/4, Sec. 17, NE 1/4, Sec. 18, T. 31 S., R. 45 E., W. M.
- SW 1/4 NE 1/4, SE 1/4 NE 1/4, NW 1/4 N 1/2 SE 1/4, NW 1/4, N 1/2 SE 1/4, SW 1/4 SE 1/4, SE 1/4 SE 1/4, Sec. 12, NE 1/4 NW 1/4, NW 1/4 NW 1/4, NW 1/4 NE 1/4, Sec. 18, SE 1/4 NE 1/4, Sec. 19, NE 1/4 SE 1/4, S 1/2 SE 1/4, Sec. 21, N 1/2 NE 1/4 SW 1/4, N 1/2 SW 1/4, SE 1/4 SW 1/4, SE 1/4, Sec. 24, NE 1/4 NE 1/4, S 1/2 SE 1/4, NE 1/4 SE 1/4, Sec. 25, NW 1/4 NW 1/4, NW 1/4 SW 1/4, Sec. 27, NE 1/4 NE 1/4, NE 1/4 NW 1/4, Sec. 28, NW 1/4 NE 1/4, Sec. 34, SW 1/4 NE 1/4, SW 1/4 NW 1/4, Sec. 35, T. 30 S., R. 46 E., W. M.
- Lots 3 and 4, Sec. 30; Lot 1, Sec. 31, T. 30 S., R. 47 E., W. M.
- Lot 2, Sec. 5, T. 31 S., R. 47 E., W. M.

All said lands not otherwise withdrawn or reserved will be subject to homestead entry only, June 15, 1918, at 9:00 o'clock A. M., standard time, and will become subject to settlement and all other forms of entry, selection and location on June 22, 1918 at 9:00 o'clock A. M., standard time, preceding the date on which said lands shall be open to entry, selection, or location of the particular form or character severally desired to be made, prospective applicants may execute their applications, present same, with required fee and commissions to the U. S. Land Office at Vale, Oregon, in person, by mail, or otherwise. Applications so filed, together with such as may be filed at the hour fixed for restoration, will be treated as though filed simultaneously and will be disposed of as directed by the regulations of May 22, 1914 (Circular No. 324-43 L. D. 254).

## LEGAL ADVERTISEMENTS

**NOTICE OF SHERIFF'S SALE**  
In the Circuit Court of the State of Oregon, for the County of Malheur  
ANNA A. SMITH, Plaintiff,  
vs.  
ALFRED YOGUE, Defendant.

By virtue of an execution, judgment, order, decree and order of sale issued out of this office by the highest bidder, to-wit: cause, to me directed and dated the 19th day of May, 1918, in favor of said Anna A. Smith, against said Alfred Yogue, for the sum of Twenty-six Hundred (\$2600.00) Dollars in United States Gold Coin with interest thereon at the rate of ten per cent per annum (10 per cent) per annum from the 17th day of June, 1915, and the further sum of \$236.00 attorney's fee, and the further sum of \$176.00 Dollars taxed as costs and disbursements, and the costs of and upon this writ commanding me to make sale of the following described real property, to-wit: All of Lot numbered Eight (8) in Block numbered Twenty-eight (28) in Eldredge's Addition to the City of Malheur County, Oregon. NOW, THEREFORE, by virtue of said execution, judgment, order, decree and order of sale, and in compliance with the commands of said writ I will, on the 24th day of June, 1918, at 9 o'clock, A. M., at the public front of the County Court House in Vale, Malheur County, Oregon, sell at public auction, subject to redemption, the highest bidder, for cash in hand, all the right, title, and interest which the above named defendant had in and to the above described property, on the 19th day of June, 1918, the date of the mortgage, and the further sum of \$236.00 and any part thereof, to satisfy said execution, judgment, order, decree, interest, costs and disbursements.  
BEN J. BROWN,  
Sheriff of Malheur County.

Dated this 19th day of May, A. D. 1918. Filed for publication, June 25, 1918. Last publication, June 22, 1918.

**REAL ESTATE TRANSFERS**  
Deeds, Complaints, Etc., Filed by County Clerk During Past Week.

H. H. Muir to Benjamin Starling, May 18, 1918, N 1/2 SE 1/4, SE 1/4 SE 1/4, Sec. 17, T. 18, S. R. 41, consideration \$2500.00.  
Walter H. Still to James P. Anderson Jr., May 27, 1918, S 1/2 SE 1/4, NE 1/4 SE 1/4, Sec. 22, T. NW 1/4 SE 1/4, Sec. 22, T. 38, S. R. 46, \$1920.00.  
U. S. A. to Walter M. Still Patent, March 5, 1918, S 1/2 SE 1/4, NE 1/4 SE 1/4, Sec. 21, NW 1/4 SW 1/4, Sec. 22, T. 38, S. R. 46.

William Bontrup et ux, to George Prude, April 18, 1918, SE 1/4 SW 1/4, Sec. 28, NE 1/4 NW 1/4, N 1/2 NE 1/4, Sec. 33, T. 17, S. R. 46, \$1000.  
Joseph K. Sheldon et ux, to W. E. Taylor, October 30, 1918, SE 1/4 NW 1/4, Sec. 1, T. 21, S. R. 46, except 20 feet right-a-way, \$1000.  
Albert Altow et ux, to John Shaw, April 15, 1918, SE 1/4 SE 1/4, Sec. 36, T. 20, S. R. 40, \$120.00.  
Elizabeth V. Speer to The Public, Affidavit.

W. S. Brundage et ux, to S. Sato, March 26, 1918, W 1/2 NW 1/4 SE 1/4, Sec. 24, T. 18, S. R. 46, \$2000.00.  
F. W. Sheffield to Geo. W. Toomb, February 7, 1918, S 1/2 SE 1/4 NE 1/4, Sec. 30, T. 19, S. R. 47, \$100.00.  
Nellie S. Therme to O. L. Dow, July 12, 1911, NE 1/4 SW 1/4, Sec. 6, T. 18, S. R. 47, \$4000.00.  
Fred E. Horner to W. T. Baker, May 1, 1918, SW 1/4 SW 1/4, E 1/2 SE 1/4, W 1/2 E 1/4, NE 1/4 SE 1/4, Sec. 28, T. 13 S. R. 41, \$100.00.  
William L. Horner to W. T. Baker, May 1, 1918, NW 1/4, Sec. 28, NE 1/4, Sec. 29, T. 13 S. R. 41, \$100.00.

Verner W. Chambers to Samuel A. Moore et ux, April 19, 1918, Lots 11-12-13, Blk. 23, Ontario, \$1850.00.  
Ruben McCreary et ux to Arthur C. Holly, April 1, 1918, Lots 1-2-3-4-5-6, Blk. 1, Adrian, Oregon, \$250.00.  
A. D. Crandall et ux to Smith Melton & Son, April 19, 1918, E 1/2 NW 1/4, N 1/2 NE 1/4, Sec. 20, T. 15, S. R. 40, \$2000.00.  
U. S. A. to Richard Harvey Patent, April 5, 1917.  
U. S. A. to William F. Stine Patent, April 19, 1918.

May, F. McDowell to George Turman, November 28, 1917, Lots 1-2, Sec. 2, T. 22, S. R. 46, \$7000.00.  
A. M. Van Dyke to A. Reed, May 3, 1918, N 1/2 SE 1/4 NW 1/4, Sec. 9, T. 3, S. R. 41, \$100.00.  
Wm. E. Edwards et ux to Nancy Mc Given, May 27, 1918, NW 1/4 SE 1/4, Sec. 11, T. 21, S. R. 46, \$100.00.  
S. J. Spencer et ux, to Nancy McGivern, May 20, 1918, Lots 1 & 2, NW 1/4 NW 1/4, Sec. 23, T. 21, S. R. 46, \$100.00.

Harry C. Edwards et al to Phil E. Edwards, April 24, 1918, SW 1/4 NE 1/4, NW 1/4 SW 1/4, SE 1/4, Sec. 36, T. 14, S. R. 42, also 1 acre in Sec. 30, T. 18 S. R. 45, \$100.  
Talmage Bly and Allie Belle Conner, June 1, 1918.  
Circuit Court Complaints  
G. A. McGovern vs. Clyde C. Robinson, Recovery on Note, Filed May 27, 1918. Amount \$300.00. Davis & Keiser, Attys, Plaintiff.  
C. O. Wilson vs. M. F. Wilson, Recovery on Note, May 28, 1918, Amount \$168.70. C. C. Wilson Atty, Plaintiff.

occupying any part of said lands at such hour, except those having valid subsisting agreement rights, initiated prior to withdrawal from settlement and since maintained, will be considered and dealt with as trespassers, and will gain no rights whatever under such unlawful settlement or occupancy, provided, however, that nothing herein contained shall prevent persons from going upon and over the said lands to examine them with a view to thereafter appropriating them in accordance herewith.

Persons having prior settlement rights, as above defined, will be allowed to make entry in accordance with existing regulations.  
THOS. JONES, Register.

**NOTICE OF CONTEST**  
Department of the Interior, United States Land Office, Vale, Oregon May 23, 1918.  
To Chester Coe and to the unknown heirs, if any of the said Chester Coe, Contestee.  
You are hereby notified that Alfred Shumway, who gives Oregon, Oregon, as his post-office address, did on May 21, 1918, file in this office his application for settlement of the Homestead Entry No. 62413 made September 6, 1912, for S 1/2 NE 1/4, SE 1/4 NW 1/4, and lot 3 Section 6, Township 22 S. Range 42 E. Meridian, and as grounds for his contest he alleges that after extensive search and inquiry he has been unable to locate Chester Coe and if he is alive or dead and if he left any heirs or beneficiaries surviving, in event he is dead, and that the statutory period for making proof on said homestead has expired and elapsed according to law, and the said Chester Coe more than three years prior hereto left and abandoned his homestead without making proof thereon and has not returned to the same and his heirs if any there be failed to make proof thereon. That their names, ages, residences, and post-office address can not be ascertained.  
You are, therefore, further notified that the said application will be taken as contested and the same will be canceled without further right to be heard, either before this office or on appeal, if you fail to file in this office within twenty days after the FOURTH publication of this notice, as set forth below, your answer, under oath, to the following questions: (1) Do you specifically contest, together with due proof that you have served a copy of your answer on the said contestant either in person or by registered mail.  
You should state in your answer the name of the post office to which you desire future notices to be sent by.

Dated: First publication, May 25, 1918. Last publication, June 25, 1918.  
THOS. JONES, Register.

## Eastern Oregon Auto Co

VALE, OREGON  
H. E. Young, Prop.  
Agencies for the following well known reliable, and value received lines of

## Automobiles & Trucks

HUDSON SUPER-SIX VELIE  
BUICK FRANKLIN OAKLAND  
Republic and Service Trucks  
Headquarters at Vale, — Branch at Ontario  
The Red Cross Is Winning The War.  
Help The Red Cross.

## The Bank of Service

The First National Bank of Vale, Ore.  
Capital \$50,000.00 Surplus \$4,000.00  
Commercial Department Saving Department  
Safety Deposit Boxes to Rent  
Our Purpose

is to make our bank a material benefit to the community in general and its patrons in particular. It would be a pleasure to have your name on our books. We invite you to start a checking account with us. The advantages we offer will be a convenience and benefit to you.  
Albert W. Reed, Cashier.  
DIRECTORS  
Chas. W. Nelson, Pres. J. T. Logan, Vice-Pres.  
Elis Rose James M. Weaver C. L. Crandall  
Help The Red Cross — Help Our Boys.

## Summer Companionship

is to be found in our place of business. We invite you to make this your headquarters while in town.  
Pool, Billiards and Cards for amusement, and every brand of tobacco always on hand. Confectionery, oranges and bananas.  
Say—try a big mug of root beer from our new dispensary—for a nickel. It's fine from the stein.  
Vale, Or. **J. D. ROGERS**  
Phone 98 Help The American Red Cross.

## Telephone Efficiency

The highest development of telephone efficiency in this country gave the United States, when it entered the war, a superiority over all other methods for quick communications.  
In Malheur county, "Service" is the motto of this phone company. If you are not already a subscriber, we invite you to become one.  
In spite of the war and what it has meant to this company, we are meeting the needs of the public in a remarkably successful way.

## Malheur Home Telephone Co.

H. H. WAGGONER, Manager

## MONEY TO LOAN

ON IRRIGATED FARMS  
On Rural Credit Basis  
You pay principal like interest and at the same time. This is an Amortized loan and becomes completely paid off in twenty years.  
You choose the date of annual payment. You can pay in advance or pay all at any time and save interest. You pay at your own bank. Annual payments little more than average interest rates in this county.  
Call and get particulars.

## C. C. MUELLER

Phone 33 Vale, Oregon  
The Red Cross Is Winning The War.

## O. K. TRANSFER CO.

and  
VALE LIVERY  
C. H. DODGE, Prop.  
Drayage and Transfer Work—Promps Service and Careful Drivers—Teams, Rigs and Saddle Horses for Hire by day, week or month.  
Auto in Connection.  
Office and Barn Phone 11 — Residence 87