

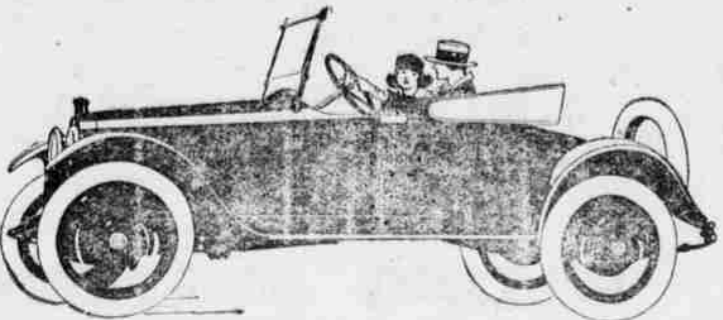
Electric Cooking Is Economical

G-E electric ranges are a real economy. They save labor, dirt and discomfort. If correctly used electricity costs no more than other fuels.

Red Cross Dollars Do Double Duty.

THE VALE ELECTRIC COMPANY

Hupmobile



Hupmobile stands for excellence in appearance, for comfort, of performance, in durability, economy and handiness.

Let Us Demonstrate These Facts

\$1495 F. O. B., Vale, Oregon.

We Are Also Agents For CHEVROLET AUTOMOBILES DENBY AUTO TRUCKS GOODYEAR AUTO TIRES

KESSLER GARAGE

KESSLER AND HARVEY, Props. The Red Cross Is Winning The War.

Help The Red Cross - Help Our Boys.

AUCTIONEERING

Advertisement for Swanson & Son, Auctioneers, featuring two men in suits and a hat.

Refrigerators

Advertisement for T. T. Nelsen, Furniture, Vale, Oregon, featuring an illustration of a refrigerator.

The Home Lumber And Coal Company

United States Fuel Administrator, H. A. Garfield, on April 5th, issued an urgent appeal to the people of the country to begin at once to lay in their winter's supply of COAL.

TOTAL ECLIPSE OF THE SUN

Solar Eclipse of June 8, Can be Watched From Vale.

The path of the shadow of the moon during the eclipse of the June 8, is conveniently accessible at a number of places in the United States.

This eclipse is a repetition of the one that occurred on May 28, 1900, and which was observed at that time by two parties sent from the Naval Observatory.

The moon's shadow will strike the earth at sunrise in the Pacific Ocean, almost directly south of Japan. In its sweep eastward it crosses that ocean and touches the United States just to the south of Seattle, Wash.

Some of the cities and towns that will be within the shadow path are Baker, Oregon; Vale, Oregon; Pocatello, Idaho and Denver, Colo.

Mercury will be to the west and south of the sun. The bright star that will be directly north of Jupiter is Beta Tauri, and Alpha Tauri will be to the south and west of the sun and between it and Mercury.

Under an appropriation of \$3,500 by Congress, the Naval Observatory will undertake observations of the eclipse and will equip a station. It has selected as the site of the observing station a point near Baker, Oregon, where a large number of prominent scientists will make observations.

The Nautical Almanac Office of the Naval Observatory has prepared a pamphlet entitled "The Total Eclipse of the Sun June 8, 1918," including maps and charts. The width of the moon's shadow is indicated on the maps and also times and durations of totality.

The Naval Observatory has copies of the above pamphlet, and will distribute as many as can be spared to those who can show they have use for them.

Report of the Condition of THE JONES & CO. BANKERS At Westfall, Oregon, in the State of Oregon, at the close of business, May 10, 1918.

Report of the Condition of THE FIRST BANK OF JUNTA At Junta, in the State of Oregon, at the close of business, 1908, 1918.

Report of the Condition of THE FIRST NATIONAL BANK At Vale in the State of Oregon, at the close of business on May 10, 1918.

Beware of Ointments for Catarrh that Contain Mercury as mercury will surely destroy the sense of smell and completely derange the whole system when entering it through the mucous surfaces.

Oregon leads the entire United States in the number of wooden steamer hulls launched for the Emergency Fleet corporation, the total in the country being 23 vessels, launched in six in districts, while 18 of the number are afloat in Oregon waters.

Deeds, Complaints, Etc., Filed by County Clerk During Past Week.

Deeds U. S. A. to James G. Smith, Lots 1 and 2, S 1/4 NE 1/4, SE 1/4 NW 1/4, NE 1/4 SW 1/4, N 1/2 SE 1/4, Sec. 2, Tp. 17, S. R. 45, Patent, March 5, 1918.

Marriage License May 14, 1918, Walter Gramse and Jennie J. Bull.

NOTICE OF SHERIFF'S SALE IN FORECLOSURE By virtue of an execution in foreclosure duly issued by the Clerk of the Circuit Court of the State of Oregon, for Malheur County, dated April 22, 1918, in a certain case, said Circuit Court for said State and County, against S. W. Gould et al as defendants, and the Plaintiff, recovered judgment against S. W. Gould et al as defendants in the sum of Thirteen Thousand Eight hundred and Thirty Three and 30/100 Dollars, together with interest thereon from the 19th day of April, 1915; and for the further sum of Seven Hundred and Eighty Dollars, attorney's fees; and for the further sum of Eighty Eight and 2/100 Dollars for taxes paid by Plaintiff and for the further sum of Fifty Five and 50/100 Dollars costs and disbursements.

NOTICE OF SHERIFF'S SALE In the Circuit Court of the State of Oregon, for the County of Malheur, ANNA A. SMITH, Plaintiff, ALFRED VOGUE, Defendant.

Report of Condition of THE FIRST NATIONAL BANK At Vale in the State of Oregon, at the close of business on May 10, 1918.

Table with columns for Assets and Liabilities for The First National Bank.

Oregon leads the entire United States in the number of wooden steamer hulls launched for the Emergency Fleet corporation, the total in the country being 23 vessels, launched in six in districts, while 18 of the number are afloat in Oregon waters.

VISITS SCHOOLS OVER COUNTY

County Superintendent Pays Call to Schools in Southern Part of County

County Superintendent, Fay Clark, made five day auto trip last week visiting the southernmost schools in the county including the McDermitt, Oregon Canyon, Rome, Jordan Valley, Pleasant View and Rockville schools.

Keen interest was found in the rural schools not only in the prescribed course of study and the coming eighth grade and final examinations, but also in the Red Cross and various war campaigns which have been put over in the last few weeks.

Miss Clark visited a short time at each school and gave interesting talks to the students. On the work of the boys and girls of today and its relation to the future of our Nation. She also outlined and explained many perplexing school problems.

Throughout the lower part of the county patriotic activities are marked and the people there promise that all calls for aid from the government will receive the same hearty response that the Third Liberty Loan campaign did when they more than doubled their quota.

NOTICE OF SHERIFF'S SALE In the Circuit Court of the State of Oregon, for the County of Malheur, ANNA A. SMITH, Plaintiff, ALFRED VOGUE, Defendant.

Report of Condition of THE FIRST NATIONAL BANK At Vale in the State of Oregon, at the close of business on May 10, 1918.

Table with columns for Assets and Liabilities for The First National Bank.

Oregon leads the entire United States in the number of wooden steamer hulls launched for the Emergency Fleet corporation, the total in the country being 23 vessels, launched in six in districts, while 18 of the number are afloat in Oregon waters.

UNITED STATES NATIONAL BANK

VALE, OREGON

Capital and Surplus \$85,000.00

The American Red Cross War Fund Deserves The Support of Every American

DIRECTORS J. P. Dunaway, G. F. Wildhaber, Leo H. Schmidt, B. W. Mulkey, George E. Davis, J. B. Adrian

It is our aim and effort to give such service to our patrons, that they profit by our dealings and recommend us to their friends.

Grocery Bill TOO BIG?

Why not cut it down? You can buy the same foods you now eat at less money if you trade at Diven & Co's. Grocery. Absolutely the same brands. The only difference is the price.

FRESH STRAWBERRIES A fresh supply of luscious strawberries arrived this week. Come in and try a box. They are delicious.

WE MAKE a specialty of flour substitutes for war bread and best white flour. Also a fine line of dried fruits. Just received, Barley flour in \$1.00 sacks.

Fresh vegetables in every Saturday: Cabbage, Cauliflower, Spinach, Onions and Lettuce.

Diven and Company Formerly "M. F. Co."

Help The Red Cross - Help Our Boys.

Ford THE UNIVERSAL CAR

There can only be one reason why Ford cars have sold and are today selling from five to ten to one over any and all motor cars made, and that reason is: It is a better car from any and every mechanical qualification.



The Vale Hot Springs Sanitarium

Rooms, Board, Bath and Massage: Dr. Thos. W. Thurston, Supt., Vale, Ore.