

FARM LOANS!

PROMPT ACTION

If you need money to improve your farm; If you wish to renew an old loan at a lower rate of interest,

See
ROSS A. SOWARD
U. S. Nat'l. Bank Bldg., Vale, Oregon

DREXEL HOTEL

Steam Heat, Hot and Cold Running Water

Rates 50c. \$1.00. \$1.50.

NICE WARM ROOMS BY THE MONTH

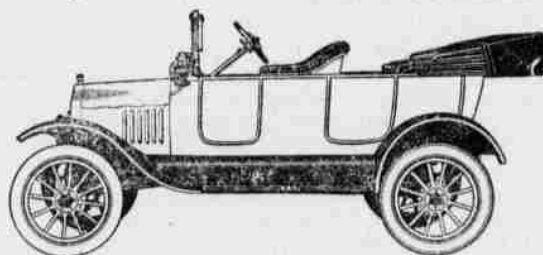
\$10.00 and up

European Plan Vale, Oregon



THE UNIVERSAL CAR

Wherever Ford cars have pioneered, Ford service has kept pace. It is the factor which strengthens the personal relation between Ford owners and the Company. To get the best possible service from your Ford car, bring it here when it needs attention and get the benefit of Ford supervision throughout. We use the genuine Ford parts and give you the benefit of the regular standard Ford prices. Touring Car \$360, Runabout \$345, Sedan \$645, Coupelet \$505, Town Car \$595—all f. o. b. Detroit. On display and for sale by VALE HARDWARE COMPANY



Just What You Want May Be Advertised in the Want Ads

SEND TO
JAEGER BROS.
for
Diamonds,
Jewelry,
Silverware,
Etc.

TWO SPECIALS IN WATCHES

Offered for a limited time by this leading jewelry and silverware house.

21-jewel watch, adjusted, 30-year gold-filled case, well \$19.50 worth \$25, at special \$14.50

17-jewel watch, adjusted, gold-filled case, at the special \$14.50

Ladies' bracelet watches at \$15, \$18.50, \$20, \$22 and up.

Agents for the celebrated Green watches, \$15 and up.

Full cut Diamonds \$10 and up. A most wonderful value!

OUR SPECIAL \$100 DIAMOND

JAEGER BROS.
Jewelry, Opticians
131-123 Sixth St.,
PORTLAND, ORE.
References, Real Estate,
Dunes, any Portland Bank.

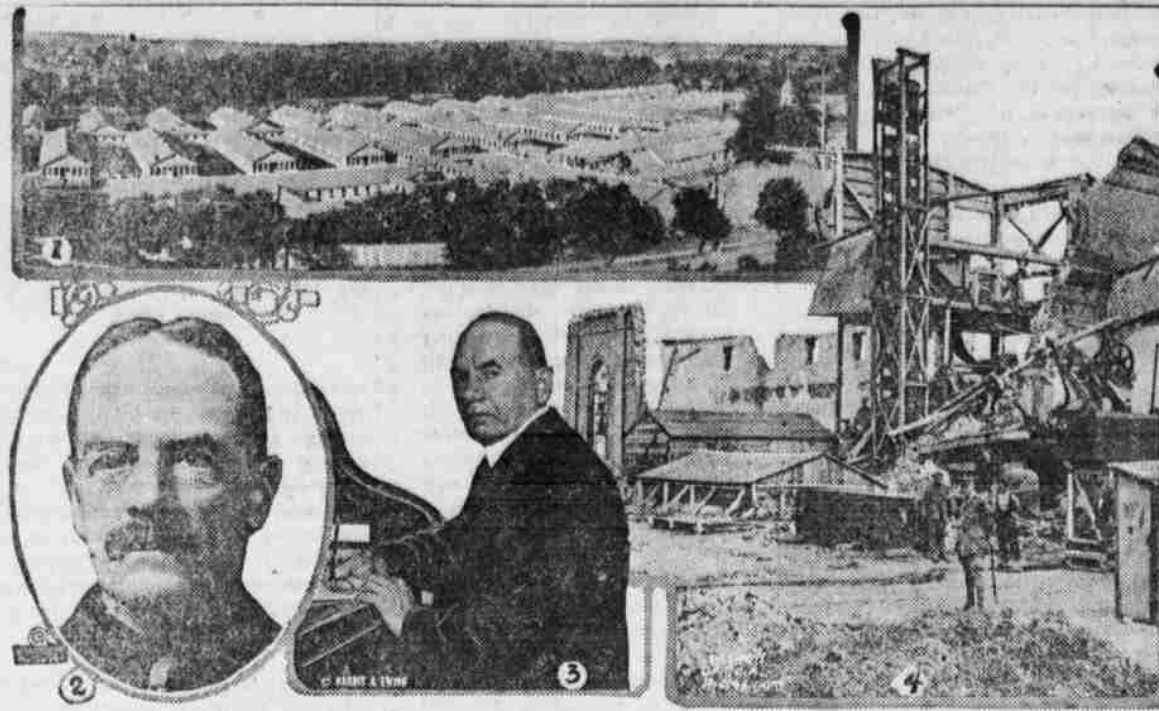
Correct Subscription Address

We are always pleased to change the address of your paper and endeavor to attend to your request promptly and correctly. Always be sure to give your former address as well as the new address and sign your name the same way as it is printed on your paper. If you wish the name changed write it the way we have it as well as the way it should be and indicate clearly which is which.

New subscribers who do not get the paper within at most two weeks after subscribing should mail an inquiry card giving name, address, date paid to and to whom the subscription was given.

Compliance with the above request will enable us to make the change promptly and will prevent you from the possibility of missing several issues.

Bandon provides \$7,500 site for big condensary.



1—Columbia university war hospital just formally taken over by the government as a receiving and evacuating medical center. 2—Maj. Gen. Sir J. E. Capper, director general of the British tank corps which is doing such efficient work on the battlefields. 3—G. T. K. Giragossian, a Boston Armenian, who has offered the government a "free energy generator," which will be tested by authority of congress. 4—Ruins of a French manufactory, typical of the way in which the Germans destroy everything in the districts from which they retreat.

CLIPPINGS FROM OUR EXCHANGES

Eastern Oregon news happenings of interest to the people of Malheur county. Development news, building activity, irrigation and oil progress, sales, stock notes, personal mention, etc., gathered here and there, mostly from our exchanges.

REAL ESTATE TRANSFERS

Deeds, Complaints, Etc. Filed by County Clerk

DEEDS

J. H. Farley to J. R. Blackaby, lots 16 blk. 23, Ontario, \$5000; Oct. 8, 1917.

United States to E. H. Crosby, SE 1/4 NW 1/4, lots 2, 3, sec. 7-21-42; NE 1/4 SE 1/4, 12-42-41; March 17, 1917.

Anna E. Devol to C. E. DeVol, N 1/4 NE 1/4, N 1/4 SW 1/4 NE 1/4, 16-16-44; Dec. 9, 1916; \$10.

J. S. Fischer to Geo. Sloneker, NE 1/4 SE 1/4, 10-17-47; Aug. 20, 1917; \$1.

C. E. Curran et ux to W. B. King, SW 1/4, 35-35-37; Dec. 8, 1916; \$10.

State of Oregon to A. J. Carpenter, 946.71 acres of indemnity land; Sept. 28, 1917; \$3467.

Loring Pefferle et ux to C. K. DeNeffe, lots 1, 2, 3, 4, 5, blk. 120, Ontario; Oct. 6, 1917; \$1.

Mary Osborn et vir to Lilly E. Tapp, lots 7, 8, blk. 13 Eldridge add. to Vale, Oct. 11, 1917; \$100.

H. F. Hawks et ux to Wm. G. Small, S 1/2 NW 1/4, 9-36-37; Aug. 30, 1917; \$1.

Fred G. Mitchell et ux to S. M. Stewart, meads and bounds, Oct. 18, 1917; \$10.

William Bedds to S. N. Adkins, N 1/4 NE 1/4 NW 1/4, N 1/2 lot 1, 17-16-46; June 1, 1917; \$1.

B. E. Luke et ux to L. B. Luke, undivided 1/2 interest in 20 acres, Sept. 24, 1917; \$1000.

Ester Boston et vir to Thomas B. Venable, quincim deed to strip of land used as a highway, Oct. 4, 1917; \$1.

Ester Boston et vir to Thomas B. Venable, meads and bounds, 120 acres Oct. 5, 1917; \$10.

John Maxam to J. S. McCumsey, 311.95 acres and 32.13 acres; Oct. 19, 1917; \$2004.

Margaret Cook to F. R. Miller, S 1/2 SE 1/4 SW 1/4 SW 1/4 9-18-47; Oct. 13, 1917; \$1.

Adolph Grams et ux to Mary A. Barthy, lots 1, 2, blk 2, Terrace Hts. add. Ontario, Dec. 8, 1916; \$250.

Chester Morris et ux to R. C. Nutt, 5 acres, Sept. 24, 1917; \$10.

George Ware et ux to Mary O. Nelson, lots 15, 16, 17, 18, 19, 20, blk. 163, an undivided 1/2 interest lots 1 to 10, blk. 245; lots 1, 2, 3, 4, 5, 8, 9, 10, blk. 73, lots 1, 2, 3, 4, 5, blk. 75, Ontario; Aug. 8, 1917; \$175.

COMPLAINTS

R. M. Wade and company vs. T. C. Thompson, recovery on note; \$79.82; Oct. 15, 1917.

MARRIAGE LICENSES

Geo. Birdsall to Edna Cronk, Oct. 19, 1917.

An unusual accident occurred at a crossing near Olds Ferry at 5:20 p. m., Tuesday when an automobile containing three men bumped into a running passenger train. James A. Cole, age 70, of Rigby, Idaho, who was driving the car, probably saved the lives of the other occupants by swerving the machine down the track just before the collision. He suffered a dislocated shoulder and was brought to the Weiser General hospital by Dr. D. E. Standard, railroad surgeon who happened to be abroad the train. Moran Griffin of Salt Lake and Chas. A. Robinson were the other two occupants.

The train came around a curve on them and Mr. Cole was unable to stop the machine in time. The entire front of the car was torn out by the train, which was making about 35 miles an hour.—Weiser American.

Station Burns.

At midnight of last Friday the Anderson home in Sands basin, the half-way house and most popular stopping place on the line, was burned to the ground. Mrs. Anderson was at home alone and everything was lost.—Jordan Valley Express.

Forger at Payette.

Last Saturday evening several checks were cashed by some of the business men of Payette which were later found to be forged. The checks were made payable to A. Wells bearing the name of C. P. Lattig, but was not Mr. Lattig's signature, nor was the man Wells known to him. There were four checks cashed amounting to \$105. The Golden Rule, Farber and Son, and the Canyon Commercial each received one for \$25, and E. C. Keith and Son one for \$30, and in no case does any of them remember the party who brought in the check.—Payette Enterprise.

Good Yield of Alfalfa Seed.

From forty acres of alfalfa on his Succor creek ranch George Parks threshed between two hundred and eighty and three hundred bushels of fine seed.—Jordan Valley Express.

Acres of Grasshopper Eggs.

Some weeks ago at the request of L. R. Breihaug, of the experiment station, the county court appointed a number of men to hunt grasshopper nests in order to start a concerted move to destroy the eggs. These men reported finding over 200 acres scattered about through the valley and in one place found one bunch covering nearly 160 acres. They have found enough eggs which if allowed to hatch would eat up the entire vegetation grown in this county next year.

It is the intention to have the property owners on whose lands these eggs are found harrow and disc the land so infected in order to open the eggs to the elements in an effort to freeze them before they hatch. So far those interviewed have stated their intention of doing what they can to get rid of this pest.

This matter does not want to be taken too carelessly. If the eggs are not destroyed there will be no crops in this county next year. Let everybody do his part to exterminate them before the hatching season next spring.—Burns Tribune.

Speaks at Drewsey.

Bishop Paddock and Dr. Peterson of Portland, addressed the people of Drewsey, Tuesday evening in the interest of the Liberty Loan and Food Conservation. With the assistance of C. W. Drinkwater, several thousand dollars were invested in bonds.—Drewsey Sun.

All Must Have a Voice.

Social welfare is based not on the advancement of a single class or industry but on the progress of all. Labor, capital, production, manufacture, transportation, commerce, the professions, all have their part. It is often difficult to say which is most indispensable. It is fruitless to try. It would be equally sensible to say that

all you need to make a ship is a rudder or a keel. The man who believes that there is nothing to the world except his own line of business is narrow and unsafe as an adviser. There is necessity in the world for a division of labor and successful government requires that it be properly representative of all elements. Any plan for control of government by one class of people is fundamentally wrong.—Pendleton East Oregonian.

Burns Oil Company.

The Times-Herald is informed that a new oil company has been organized and leases are being taken upon lands in the vicinity of Lawen with the condition that active prospecting work will begin within one year. We understand Scott Hayes has leased the new concern 700 acres on which to prospect for oil.—Burns Times-Herald.

Big Sheep Deal.

W. H. Gess, of Nampa, was here several days this week receiving a bunch of sheep purchased from Fred Palmer and Jose Navarro. There were some seventy-five hundred woolsies in the bunch, at ten dollars per woolly.—Jordan Valley Express.

Produces \$120 Per Acre.

Most of the hay in this locality is being measured this week and final payment is being made to the ranchers by the stockmen. At \$15 a ton our ranchers are reaping a great harvest, some realizing as high as \$120 an acre from their alfalfa land.—Homedale Press.

Stanfield—Work on saw fruit warehouse here progressing.

U. S. LAND OFFICE FILINGS

All Homestead and Other Entries Filed at Vale Office During Week

Carl Woodcock, Malheur, W 1/2 E 1/4, E 1/2 W 1/4, 32-13-41; less Lyn placer claim.

J. S. McCumsey, Crowley, W 1/2 SW 1/4, 34-24-39; 89 acres.

Benjamin F. Jordan, Westfall, SW 1/4 NE 1/4, SW 1/4 SE 1/4, S 1/2 SW 1/4, 4-16-40; 160 acres.

L. Louise Sears, Harner, SE 1/4 NE 1/4, SE 1/4 S 1/2 SW 1/4, NW 1/4 SW 1/4, 1-20-41; 320 acres.

Louis C. DeBord, Sheaville, lots 1, 2, 3, 4, S 1/2 N 1/2, SW 1/4, W 1/2 SE 1/4, NE 1/4 SE 1/4, 4-16-38; 631.44 acres.

G. H. Plummer, Western Land Agent, Tacoma, Wash., SE 1/4 NE 1/4, 24-18-36; 40 acres.

Arthur Ward, Juntura, S 1/2 NW 1/4, 12; lots 1, 2, S 1/2 NE 1/4, N 1/2 SE 1/4, 2-20-36; 320.14 acres.

Emil Baker, Skullspring, NW 1/4 NW 1/4, lot 4, sec. 3; NE 1/4 NE 1/4, lot 1, 4-25-40; 77.75 acres.

1918 Models and Prices CHEVROLETS

Cars just arrived and ready for delivery at Vale

"Four-Ninety" Touring\$ 715

"Four-Ninety" Roadster 700

"Express" Delivery Car 675

"F-A" Baby Grand 1050

8 Cylinder Touring 1700

We have the record of selling 60 Chevrolet cars in Malheur county this year, and have established agencies and service stations in Ontario, Ironside, Juntura and Jordan Valley.

"COLE-8"

We have recently become the agents for this wonderful car. The last word in automobile perfection both in its mechanism and appearance. Let us show you this car. It stands supreme.

Goodyear Tires

All sizes and all kinds of treads Complete line of Cord tires We being a regular Service Station may make adjustments at our Garage

Kessler's Garage

Vale, Oregon

O. K. TRANSFER CO.

ROY CLARK, Mgr.

Drayage and transfer work a specialty. Prompt service. Careful drivers. Office at Johnson & Nordale 2nd hand store.

Phone 143-W



Sleep on it for 60 nights

THEN tell us whether you ever found a mattress so comfortable as the Sealy. It has a soft even support that has never been equalled. No humps to tire you. No hollows to catch dirt.

Guaranteed, too, for 20 years against packing, spreading or becoming lumpy. It never has to be remade.

Try a Sealy for 60 nights at our risk.

"You Sleep Soundly on a Sealy— Ask Any Alarm Clock"

T. T. Nelsen Furniture Store

SATISFACTION Is Our Silent Salesman

Quality goods and superior service have always been hobbies with us. Our aim is to please. We realize that you will come back if you are satisfied with our service and the quality of your purchases.

Our employees are alert and prompt in supplying customers' needs. We never misrepresent and

You Can Depend Upon Our Statements

You'll like the way we do business. Our prices are based on a fair standard. Our rapidly increasing trade is good evidence that our methods are appreciated.

VALE DRUG STORE



LIVE STOCK AUCTIONEERS

—You can have two experts working for the price of one.
—J. M. Swanson & Son of Payetto, Idaho, work in harmony together.
—Seldom a bid escapes them. They keep the interest of the crowd from the start of the sale to the finish.
—A square deal to the buyer and seller is their motto.
—Write, phone or wire for date at our expense.
—We will be glad to help you set up your bill, and advertising



THE MALHEUR ENTERPRISE

The Vale Hot Springs Sanitarium

Rooms, Board, Bath and Massage: Dr. Thos. W. Thurston, Supt., Vale, Ore.

MAKE YOUR DOLLARS AND THE WAR

YOUR LIBERTY BOND FOREFATHERS DIED FOR IS AT STAKE

IF YOU CAN'T FIGHT YOUR MONEY CAN

BUY A LIBERTY BOND

AND YOUR COUNTRY WILL DO THE REST