

At The Movies

LIX "DEAD LINE" FOR THEIR FOES

Outlaws Fighting Cattle King In "The Flame of Hellgate" Establish Zone of War

Just as the police of New York City long have maintained a "dead line" south of which no "crook" is allowed to go, so in "The Flame of Hellgate" the superior picture in which Debra's Michelena will be seen at the Majestic Theatre Sunday and Monday, a bold outlaw queen establishes a "Dead Line" above which none of the cattle king's men can come.

Her father has been murdered by the cattle king's forces, and she has decided that if there is to be any such reality in America as cattle "kings," she will "queen it" a little herself. So she and her men establish a large sign on the side of the mountain, saying: "No Trespassing—The Dead Line." Beside this sign stands a guard day and night. So carefully does he watch, and so skillfully do the followers of the outlaw queen fight that the cattle king is worried.

Fight Great Battle

The sheriff who has obtained his office through the influence of the cattle king and who, in turn, is supposed to gratify every whim of the "king" decides that he will go up single-handed and capture the outlaw chief, and his band. He gets as far as "The Dead Line." There an unusual fate befalls him and he is sent back to the village on his horse, tied hand and foot.

This gives a slight idea of the action and atmosphere of "The Flame of Hellgate" which ends in one of the most tremendous gun battles ever put on the screen, a battle fought high up in the mountains with the entire forces of the cattle king opposing the outlaw queen and her men, firmly fortified inside their fastness.

CRIMES SWEEP SERVANT CLASS

"Who's Your Servant?" Pictures Startling Conditions in the Big Cities

Police of New York and many other big cities fail to explain the

growing number of crimes committed by the servant class. The newspapers are full of accounts of thefts, forgeries, black-mailings, and even more violent offenses charged to servants who violate the confidences entrusted them to gratify personal ends. Such a crime is the basis of the sensational feature, "Who's Your Servant?" which is opening at the Majestic Theatre on next Tuesday and Wednesday.

This film brings home in a startling manner the advantage which the plotting servant has over his trusting master, and shows the lengths to which the servant, bent on accomplishing an illegal end at any cost will go. In "Who's Your Servant?" the central characters are a clever but unprincipled valet, a high American naval official, and his pretty daughter.

Would Steal Girl, Too
The servant, while trying to gain information of a highly confidential nature by means of theft, does no scruple also at attempting to steal the affections of the girl, who becomes horrified as she learns of the duplicity of the man. The big theme of the picture moves around her struggles to get back the papers which the valet has stolen, and at the same time escape from his room, to which she has gone to assure her recovery of the stolen articles.

Let us build you a real Electric Heater—Northwestern Electric Co. Phone 188-J.

Let us build you a real Electric Heater—Northwestern Electric Co. Phone 188-J.

To Go With Dreamland Autocaster



WHO'S YOUR SERVANT?

WHO'S YOUR SERVANT

"Try It Out Yourself"

says the Good Judge



And you will find how much more satisfaction a little of this Real Tobacco gives you than you ever got from a big chew of the ordinary kind.

The good, rich, real tobacco taste lasts so long you don't need a fresh chew nearly as often. So it costs you less.

Any man who uses the Real Tobacco Chew will tell you that.

Put up in two styles

W-B CUT is a long fine-cut tobacco

RIGHT CUT is a short-cut tobacco

Weyman Brothers, 107 Broadway, New York City

Are Your Barns in Shape For Winter

A good barn that is wind and weather-proof is the most profitable investment on your farm.

Your cattle thrive better when they are properly protected, and they require less feed. The milk production from your cows is greatly increased by a warm barn.

The Harvest work is now over and you have time to put your barn in shape for winter. Batten up all the cracks. See that the roof is weather-proof. You may need to build an addition to take care of your stock. But do it now.

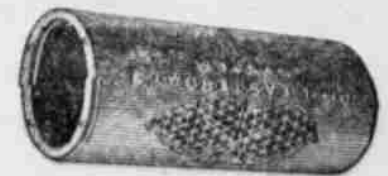
We Furnish the Material

We have all the material you need. Come in and let us figure costs for you. Also we can probably make some suggestions that will save you money.

Boise Payette Lumber Co.

AL CHANCE Sales Manager, Ontario Yards.

"Permanent as the Pyramids" CONCRETE PRODUCTS



Concrete is the Foundation of all Permanent Structures

If You Are Building For Permanence Use Concrete
Concrete Irrigation Pipe
Concrete Drainage Pipe
Concrete Foundations

Our plant is equipped with modern machinery, our methods of Manufacture are those gained thru years of experience, our labor is skilled, our product is the best obtainable. You get the benefit of every pound of cement used.

Ask Satisfied Customers

The test of any product is its service. Our concrete pipe has been used in many of the biggest and best drainage and irrigation systems in this section. Ask for information, let us refer you to those who have used our product.

We will gladly furnish you estimates on your contemplated improvements.

Ontario Concrete Pipe Co.

C. E. BINGHAM, President
Ontario, Oregon



First
Miss Shepherd sang, "In the Gloaming." The New Edison stood on the stage by her side.

Then
She suddenly stopped singing. The New Edison took up her song, and continued it alone.

185 times - no difference!

Miss Betsy Lane Shepherd, famous concert soprano, has made this test 185 times. 185 public audiences, in 185 cities, have heard her compare her voice with its RE-CREATION by the New Edison. No one, out of a total of more than 100,000 listeners, has been able to tell when Miss Shepherd was singing, and when the New

Edison—except by watching her lips, 4,000 similar tests of direct comparison, made by over fifty other celebrated vocalists and instrumentalists, have given this same result.
The New Edison is perfect realism achieved!

What kind of music "gets" you?

Tell us—and we'll show you how all its emotional power is RE-CREATED by the New Edison

Is it the soulful violin?—a mellow contralto?—the scintillating flute?—a sweet, soothing tenor?—that draws the quickest emotional response from you.

Let us play your favorite voice or instrument in a new kind of Realism Test. See whether you are touched by the RE-

The NEW EDISON

"The Phonograph with a Soul"

Perfect realism is your one vehicle to the inner joys of music which you crave.

Mr. Edison spent three million dollars in the research work which gave the New Edison perfect realism. He did this in order that the phonograph might transcend its former limitations and (here we quote Mr. Edison's own words), "bring into every American home, music so realistic and so perfect in its rendition as to be an unending source of benefit and pleasure."

The instruments which proved this perfect real-

ism in Miss Shepherd's 185 tests were all exact duplicates of the original Official Laboratory Model on which Mr. Edison spent his three million dollars. You can also have an exact duplicate of this three million dollar original. We have it in our store, and guarantee it to be capable of sustaining the same test of direct comparison.

Remember what to ask for—"personal favorites" Realism Test!

CREATED music in the same way that you are touched by the living music.

We want to show you that the New Edison RE-CREATES all the vital power in all music.

Important Practical Detail

Our Budget Plan brings your New Edison, for immediate enjoyment, without asking for immediate payment. Ask about it when you come in to hear the "Personal Favorites" Realism Test.

TURNER MUSIC SHOP

Ontario, Oregon

