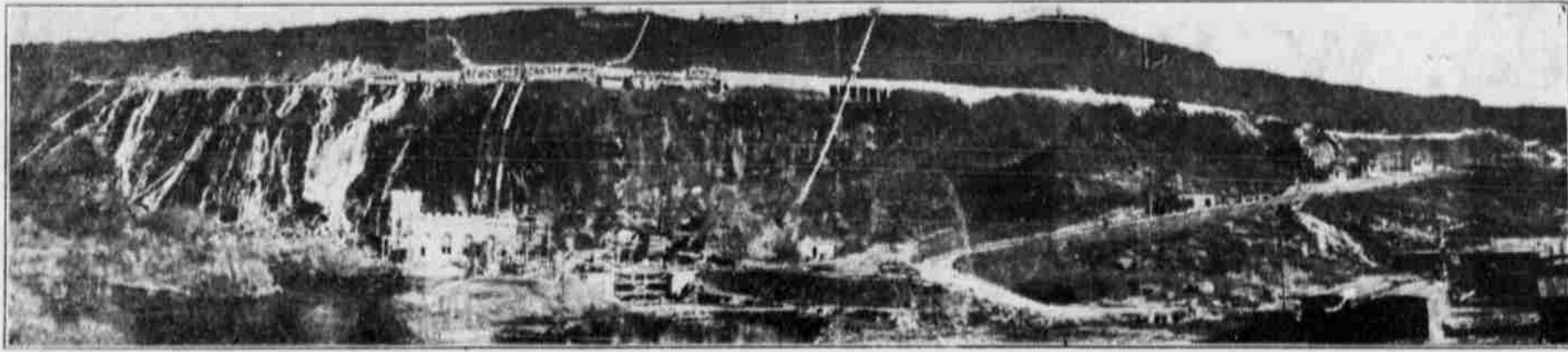


Harnessing A Thousand Springs So the People May Be Served



A step toward fuller completion of the Idaho Power Company's system of great electrical plants to serve the people with electrical energy so vital to the development of Idaho—a step that is costing considerable money, is now being made at Thousand Springs where we will bring into operation a great power plant with a generating capacity of 13,300 horsepower.

Will Insure Land From Drouth

Day after day, stone-masons, carpenters, blacksmiths, steel workers, civil and electrical engineers, accountants and many other experts and builders are toiling to complete as quickly as possible the Thousand Springs plant so those who are willing for this power may be served in time for the summer irrigation season. The history of Thousand Springs is in itself of much interest, for it is at this point where the famous "Lost Rivers" of Idaho are supposed to break forth for their barriers of rock and again leap beneath the sunshine and stars to the Pacific ocean beyond. Our Thousand Springs power plant site represents a most unique and elaborate problem requiring the greatest engineering skill to solve.

Power From Waste of Lost Rivers

Here at Thousand Springs, where the water is boiling out from subterranean channels 186 feet above

the Snake river at a temperature of about 60 degrees Fahrenheit, we have constructed a great harness of cement and steel which collects these waters that formerly went to waste and generates them into power that can be delivered hundreds of miles away to homes and farms which otherwise would be without light or power.

One Unit of a Great System

In 1912 the first unit of the Thousand Springs plant was completed, with a generating capacity of 2700 horsepower. The new unit, now under construction will generate 8000 horsepower, making this plant capable of producing 13,300 horsepower of electrical energy. Most of this will be used for irrigation purposes in the summertime—for pumping from the Snake river to make the parched lands spring in to waving fields of alfalfa, wheat and other grains, or become checkered with fruitful orchards.

Thousand Springs plant is only one unit of our great system of electrical development. We are offering everybody an opportunity to become a stockholder in our big organization which is one of the greatest factors in the development of Idaho. Our 7 per cent Cumulative Preferred Stock which we are now offering to the public is a safe, sound and conservative investment.

You May Become Part Owner

You can invest in 7 per cent Cumulative Preferred

Stock in monthly installments and, while paying for it, you receive 6 per cent interest on your payments. Once payments are completed your stock earns you 7 per cent every year, and this is in four installments on February 1, May 1, August 1, and November 1. You thus become a part owner in the development of Idaho.

The Idaho Power Company now serves more than 27,500 customers. It will serve many more in the future. Its management is efficient and conservative. Write us for full details of our 7 per cent Cumulative Preferred Stock and our special Savings Plan. Remember—you do not have to have a lot of money. If you can only save a small sum each month you can become an owner of this high interest bearing stock.

Clip, fill out and mail the coupon. Complete details of our preferred stock plan will be sent you immediately.

IDAHO POWER COMPANY.

Boise, Idaho.

I am interested in your 7 per cent Cumulative Preferred Stock and Special Savings Plan. Please send me full information concerning this. It is understood I am under no obligation whatsoever.

(Name)

(Address)

The Idaho Power Company

General Offices, Boise, Idaho

Golden Rod Oats
Need substantial breakfasts. Try Golden Rod Oats. Most nutritious, plenty of good cream and sugar.

Order a package from your grocer today.

COUNTY NEWS ITEMS OF RECORD.

Geo. C. Miller to John Q. Whipple, lots 10 to 16 Irrigated Lands Corp. in Sec. 31-19-47; 3-15-20. \$1000.
Stephen B. Terwilliger et ux to G. Josephine White, W 1/2 NE 1/4 SW 1/4 NE 1/4, 10-18-47; 3-4-20. \$1500.
R. W. Dougherty et ux to Katherine Vinze, N 1/2 SE 1/4, NE 1/4 NE 1/4, Lot 1, Sec. 3-14-41; 3-22-20. \$800.
P. L. S. Co. to J. D. Fairman, trustee, lot 4, Bl. 5, Harper; 1-26-20. \$150.
P. L. S. Co. to Selma Fairman, lots 506, Bl. 5, Harper; 10-30-19. \$10.
U. S. A. to Clinton H. Atterbury, NE 1/4, etc.; 7-31-17.
Ontario Adv. Co. to Roman Catholic Bishop of Baker, N 1/2, etc.; 8-18-47.
Orill M. Johnson et ux to Kennel N. Cahorn et ux SW 1/2, etc.; 22-16-47; 12-27-19. \$8000.
Northwest Townsite Co. to Chester C. Doan, lot 7, Bl. 27.
N. W. Townsite Co. to I. D. Huston, lot 2, Bl. 22 NW Ts 1st Adn. Vale; 5-5-15. \$100.
NW Ts Co. to Florence E. Myers, lot 9, Bl. 3, NW Ts Cos. 1st Adn. Vale.
C. R. Emison et ux to Nicholas Kries, lot 20, Bl. 15, Ontario; 3-22-20. \$3500.
Neils Rasmussen to C. F. McLain, E 1/2 etc., 12-18-46; 6-3-19. \$11,500.
P. M. D. W. and Bertha Dugger to L. L. Griep, SE 1/4, etc., 8-18-47; 12-26-19. \$3500.
Minta Dugger to L. L. Griep, SE 1/4, etc., 8-18-47; 3-18-20. \$100.
Leonard Cole et ux to Meromo Bridges, N 1/2, etc.; 10-19-44; 3-23-20. \$10.
Jerome Bridges to Addie J. Bridges, lot 5, block 7, Kelly's 1st Adn. Vale. \$10.
U. S. A. to Lloyd W. McRae, S 1/2, etc. 7-24-37.

U. S. A. to Clarence B. Griner, N 1/2, etc., 12-14-39; 12-30-19.
Florence Glonn et vir to Wm. Purvis, lots 9-10, block 20, Ontario; 2-19-20.
J. R. Fuller to Frances Fuller, W 1/2 etc., 17-16-47; 5-1-19. \$100.
Cus G. Tucker et ux to A. W. Garden, lots 18-19-20, block 72, Ontario; 2-5-15. \$100.
R. A. Merchant et ux to Walter G. Howe, lots 6, 7; S 1/2 of 5, Bl. 18, Ontario. \$500.
State Land Board to Harland A. Diven, N 1/2 26-23-44; 12-11-19. \$800.
Geo. Gardner to R. E. Weant, 1/2 Int. SW 1/4, 12-19-44; 3-24-20. \$10.
Zeda G. Fields et vir to E. A. P. LaFollette, NW 1/4 NW 1/4, 15-16-47; 3-9-20. \$10.
B. A. Brain to Lucy Martin, 1-8 Int. SE 1/4 34-20-45; 4-20-19. \$10.
V. B. Staples, Adm. of Clarence H. Staples Estate to Vincent McKenna, lots 11-12-13, block 129, Ontario; 3-9-20. \$500.
Jessie C. Scott et vir to Rosa Lamberson, NW 1/4 11, E 1/2, etc., 13-19-37; 3-1-20. \$14,000.
J. G. Lamberson et ux to Jessie C. Scott and Clara B. Jones, lot 2, S 1/2 NW 1/4, NE 1/4, etc. \$35,000.
U. S. A. to W. W. Dowell, S 1/2 22-26-39; 11-20-19.
P. L. S. Co. to J. B. Coburn, lot 9, Bl. 10, Harper; 1-26-20. \$150.
H. C. Eastham et ux to P. W. Eastham, SW 1/4, etc. 8-18-45; 3-17-20. \$100.
Fannie Howard et vir to Ralph Duncan, E 1/2 NW 1/4, W 1/2 NE 1/4 16-15-40; 12-13-19. \$1333.
Chas. O. Howard et ux to Ralph Duncan, E 1/2 NE 1/4 16-15-40; 12-16-19. \$100.
John Broderick et ux to Mrs. S. D. Duncan, NE 1/4 34-14-39; 2-21-20. \$10.
U. S. A. to Nannie Duncan, N 1/2 NW 1/4 8-15-39; 8-29-19.
Guy Stengle et ux to Chas. Gehert, S 1/2 NW 1/4 2-18-46; 3-10-20. \$300.
Nicholas Kries to Sidney Johnson, lot 47, Bl. 3, Riverside Adn. Ontario;

3-22-20. \$200.
Dewey L. Miller et ux to N. S. Pheasant, E 25 acres of NE 1/4 SE 1/4 23-21-46; 2-11-20. \$8750.
Otto C. Miller et ux to Lloyd L. Culbertson, NW 1/4 NE 1/4 25-16-47; 2-4-20. \$4000.
H. Lee Noe, sheriff, to Leo Chas. Miller, E 50 acres of SE 1/4 16-18-46; 3-15-20. \$1594.
Sheriff to Leo Chas. Miller S 1/2 SW 1/4 8; SE 1/4 SE 1/4 7; NE 1/4 NW 1-4, 17-16-47; 3-5-20. \$1827.
J. M. P. Corson to Leona M. Deaver, lots 5, 6, Bl. 2, Nelson's 1st Adn. Vale. \$100.
Mary Jones et vir to Ben Starling, E 1/2 E 1/2 30-16-41; 3-11-20. \$1000.
Jonas L. Brown et ux to Mason D. Clough, NE 1/4 NW 1/4 35-16-47; 12-8-19. \$8000.
J. B. M. C. Leo C. Hatfield to S. D. Goshert, lots 23 to 28, Bl. 1, Taylor's Adn. Nyssa; 3-8-20. \$450.
Dulay C. Rader et vir to Eudora V. Anderson et vir, lots 11 to 15, Bl. 147, Ontario; 3-25-20. \$5000.
Ontario Adv. Co. to R. S. Goldman, N 1/2 NW 1/4 NE 1/4 NE 1/4 8-18-47; 2-14-20. \$1000.
Arthur C. Holly et ux to John E. and Dan T. Holly, lot 4, Sec. 23-21-46; 3-6-20. \$100.
John E. and Dan T. Holly to Arthur C. Holly, lot 5, Sec. 23-21-46; 5-26-20. \$100.
J. W. Lowell et ux to P. M. Binkley, lot 6, Bl. 65 Green's Adn. Nyssa; \$100.
P. S. L. Co. to Wm. Welch, lots 14, 15, Bl. 5, Harper; 2-20-20. \$250.
C. H. Trousdale et ux to C. U. Stover, lots 19-20, Bl. 89, Ontario; 3-26-20. \$1550.
Geo. A. Hathaway et ux to John Liddle and Kenneth Matheson, E 1/2 SW 1/4 etc. 35-26-46; 1-26-20. \$6500.
Complaints in Circuit Court
Ontario Auto Co. vs. L. I. Hirsch, First National, Ontario. Foreclosure of lien; \$395; 3-22-20.
Hans Ott vs. T. Penn, W. S. Rose et ux. Injunction; 3-22-20.
L. J. Hadley vs. H. E. Young, recovery of money, \$12.00. Appeal

from justice court; 3-22-20.
Vale Trading Co. vs. W. B. Carman, recovery of money, \$51.69; 3-22-20.
Thelma D. Wellman vs. Harry L. Wellman, divorce; 3-23-20.
Adeline F. Richter vs. Harry F. Richter, divorce; 3-23-20.
J. F. Doty vs. L. I. Hirsch and Ontario National, foreclosure of lien, \$82.79; 3-26-20.
Wm. E. Lees vs. T. H. Moore, foreclosure tax lien; 3-26-20.

Subscribe for the Argus and keep up-to-date.

EASTER
AT THE OSBORN MILLINERY

Easter is the Fourth of April. You will want a new hat by then. We have a hat for every head. We carry a complete line of Select Waists

Osborn Millinery
ONTARIO, OREGON

DORTLAND SEED Co.
For 1920 Plant Only the Best

Our Seed Catalog and Planter's Guide is the standard reference for growers of the Northwest, listing our complete lines of Seeds, Trees, Plants, Fertilizers, Poultry and Bee Supplies, Sprays and Sprayers, Dairy Supplies and Equipment.

Your Name should be on our Mailing List
Ask for Catalog No. 010

DORTLAND SEED Co.
PORTLAND, OREGON