

DOUGLAS TAXPAYERS ELECT OFFICERS

(Special to The Argus.) Roseburg.—The Douglas County taxpayers' League, formed here, elect...

O. & C. LAND IS HELD TAXABLE

(Special to The Argus.) Washington.—The state of Oregon, in the opinion of officials of the department of justice, can collect from the Oregon & California railroad company back taxes on every acre of the unsold portions of its land grant and can continue to collect from this company until title is passed to other owners.

HUERTA AND OROZCO ARRESTED AT EL PASO

(Special to The Argus)

El Paso, Tex.—General Victoriano Huerta, ex-president of Mexico, arrived here Sunday, accompanied by several well-known Mexicans. Soon afterward he was taken into custody on charges of conspiring to incite conspiracy against a friendly country, and held for a time at Fort Bliss, until he gave \$15,000 bail.

General Pascual Orozco was detained with him, on the charge, and also released later, on \$7500 bail.

The charges were filed by special agents of the department of justice.

The coming of General Huerta to El Paso had been predicted here, but news of his detention came as a surprise to the public. His entrance was accomplished as he had planned, in that he left the train at Newman, N. M., traveling the last 20 miles by auto. It differed in that he was driven into the city as the guest of United States officials, and escorted by a detachment of the Fifteenth United States cavalry instead of being accompanied only by General Pascual Orozco, an ex-Mexican general, and Major Luis Fuentes, a son-in-law of General Huerta.

For several days there have been persistent reports that June 28 had been fixed as the date for far-reaching developments at Juarez in connection with the so-called third revolutionary movement. Some observers professed to see a close relation between this movement and the arrival of General Huerta. They expressed the opinion that his detention had prevented such a consummation by removing the possibility of Huerta's participation in such a movement, despite his declaration that he had no intention of attempting to cross into Mexico.

SERBIAN RESERVISTS HELD BY OFFICIALS

(Continued on Page 4)

Chicago—Twenty-three reservists of the Serbian army, alleged to be United States citizens, were held by federal officers here for appearance before a United States commission for examination as to a violation of the nation's neutrality.

The reservists were seized by 15 United States deputy marshals as they were departing, with about 400 of their countrymen, for London, Ont. They were to sail from Canada, it was reported, to join their regiments fighting with the allies. Other members of the party were permitted to leave after the train had been delayed four hours.

The 23 men were detained only after a riot call brought a score of police reserves to the assistance of the federal officers. The men began shrieking in their native tongue that German spies had beset them.

HUERTA HAS LONG BEEN UNDER WATCH

(Special to The Argus.)

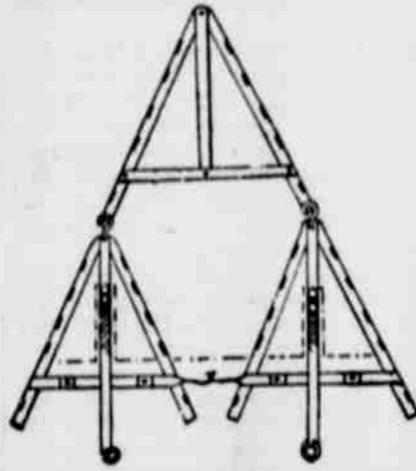
Washington.—The United States government has frustrated for the present an attempt on the part of General Victoriano Huerta and his associates to launch from American territory a new revolutionary movement in Mexico. The arrest of the Mexican ex-dictator with General Orozco and others at El Paso follows nearly three months' of espionage by government agents.

The department of justice had instructed United States Attorney Camp of the western district of Texas, to take into custody these men, who seemingly were engaged in violations of American neutrality laws, which forbids the recruiting of men, the purchase of supplies therefor and the organization of a military expedition on the soil of the United States.

The developments at El Paso caused a sensation in Mexican quarters here, both the Carranza and Villa agencies issuing statements rejoicing that the United States had checked an effort on the part of the so-called reactionary interests to regain control of Mexican affairs.

clover; (2) clover hay, first crop; plow between July 1 and Aug. 1 and disk as above; (3) ensilage corn. A fall rye, corn, barley and clover rotation may be managed so as to eradicate the quack grass between the first and second years.

Handy Harrow. L shaped beams of steel bent into triangular frames to form a nose and two legs and L shaped braces perpendicular to each other and bolted or riveted to the main part of frame, as shown, make this new harrow. The



rear harrows have handles attached to the braces, so that a man following a harrow may reach down and lift a harrow to release piles of cornstalks, brush, stones and other matter that collects when harrowing. — Farming Business.

Blackberries. According to a recent bulletin of the United States department of agriculture, an average yield of 2,300 quarts of blackberries per acre may be expected under good management. The best land, it is said, is a deep, fine, sandy loam with a large supply of humus and abundant moisture at the ripening season. In growing blackberries one of the most important considerations is to have an easily reached market. Hauling the berries long distances injures them.

NOVEL AUTO DISPLAY SHOWS INNER WORKS

Standard Oil Company Has Unusual Exhibit at Ford Garage

It is not often that it falls to the lot of the average motorist to see the internal workings of his car while in actual operation. Therefore every motorist that possibly can should visit the exhibit being held by the Standard Oil company at the Ford Garage, where they will find on display a stripped chassis of a White truck and a Ford car with proportions of the housings of the motor, transmission and rear axle cut away, so that the internal workings of the motor, transmission and rear axle may be seen as if actually traveling on the road.

This is an educational feature in every respect and is intended to show the automobile owner how to take care of, maintain and lubricate his car correctly. There is an engineer in attendance who will explain not only the workings of these cars but the workings of your car and also answer any questions relating to the same. He states that wherever this exhibit has been, it has been received with the greatest of enthusiasm by the automobile public in general and shows very graphically why his company recommends fluid greases that will splash and give perfect lubrication. Therefore, do not fail to visit the exhibit and get posted on the care and lubrication of your own particular car.

The exhibit opened yesterday and will continue until July 3rd.

NYSSA NEWS.

Miss Edith Iredale left Tuesday evening for Portland where she will visit several days before going to Mammoth.

Mr G. B. Hallows of Boise was a business visitor in Nyssa Thursday. Misses Lucy Thompson and Annie McDonald left for Mammoth Friday evening.

Miss Elsie Gibson, who has been attending the teachers normal in Vale came home Friday evening to spend Saturday and Sunday.

Mrs E. H. Mc Donald and two small sons, Dwight and Gordon left for Caldwell Sunday, where they will attend the Chataqua.

Mr R. J. Davis who is acting as instructor at the Vale normal arrived in Nyssa Friday returning to Vale Monday morning.

Mr E. B. Nedry has been visiting in Jordan Valley the past week.

Mrs Harry Pratt and two children of Owyhee were in town Tuesday.

Mr J. H. Wolf returned home Friday from Boise where he has been attending the Chataqua.

Miss Amy Sinclair was hostess at a delightful little party given at her home last Thursday, the occasion being her fifth birthday.

The annual school meeting was held at the school house, Monday, Mr Peter Tenson was elected school director and Mr R. J. Davis school clerk.

Mr and Mrs Sherwood have received invitations to the wedding of Miss Helen Thurston and Paul Brainard of Payette which will occur next Wednesday. Mr Brainard will act as superintendent of the Nyssa High School next term and all look forward with delight to the arrival of the young couple in Nyssa.

DEEDS AND PATENTS June 21 to 26, 1915. Andrew B. Anderson et ux to Joseph R. Beddes, NW 1/4 NW 1/4 16, lot 2, 9-16-46, April 24, 1915, \$1,000. Ontario Advancement Co. to Helena B. Dunphy, E 1/2 SE 1/4 NW 1/4 SE 1/4 5-18-47, May 1, 1915, \$1,000. Sarah E. Fulcher et vir to William M. Lambert, All interest in Estate of Henry C. Lambert, Deceased, January 25, 1915, \$1. David A. Lambert to William M. Lambert, All interest in Estate of Henry C. Lambert, Deceased, January 7, 1915, \$200. Oregon Valley Land Co. to James A. Miller, NE 1/4 SW 1/4 23-33-40, May 25, 1915, \$200. Samuel H. Lawrence et ux to Edna

THE VEGETABLE GARDEN.

Set main crop celery plants now; also cabbage plants. Soapuds will kill plant lice. So will tobacco extract, kerosene emulsion or whale oil soap.

Meat is expensive. Beans are a good substitute. Keep the weeds all out of the beets. Now is their time to put in some good leeks.

Cultivate the homely toad. He lives entirely upon insects and is always hungry.

The greatest mistake in a garden is crowding, which makes everything grow small and spindling.

Wood ashes are good fertilizers, but not for strawberries and potatoes. They do best in a slightly acid soil and the ashes neutralize the acidity. Ashes are excellent for tomatoes, peas and a general line of garden crops.

Provide the tomatoes with a support of some kind—trellis or stakes. Make two sowings of peas of an early wrinkled variety for a late crop.

E. Leonard, S 1/4 SE 1/4 SE 1/4 30-15-47, June 18, 1915, \$10. Also metes and bounds in 31-15-47, (31 acres.)

Juntura Investment Co. to Ada M. Hedges, lots 12-13, bl 15 Juntura, Jun. 30, 1913, \$350.

Nathan H. Suttler to Harriet and Pauline Sears, lot 3 bl 25 Eldredge's Adn. Vale, June 23, 1915 \$1.

U. S. A. to Edward J. Curtis, SW 1/4 NW 1/4 29, N 1/2 NE 1/4 SE 1/4 NW 1/4 30-28-46, November 30, 1912.

Wm. R. King et ux to W. H. Brooke, 1/2 int. in E 1/2 E 1/2 SE 1/4 2-18-46, August 17, 1911, \$10.

Grant S. Ridgley et ux to School District No. 42, 1 acre in 6-17-44, June 14, 1915, \$45.

COMPLAINTS FILED IN CIRCUIT COURT DURING WEEK.

Albert W. White vs. N. B. Matthieses, M. G. Hope, I. W. Hope and John S. White, Foreclosure of Mechanics Lien, \$750.

Empire Lumber Co. Ltd. vs. F. E. Harter and E. G. Harter, Recovery on Note, \$272.91.

Charles A. Garvin vs. John A. Ward, Recovery on Note, \$164.

MARRIAGE LICENSES Issued during the week.

Claud Woodland and Jennie Beard, June 25. E. J. Richards and Minnie Cookson, June 26.

QUEEN OF GREECE



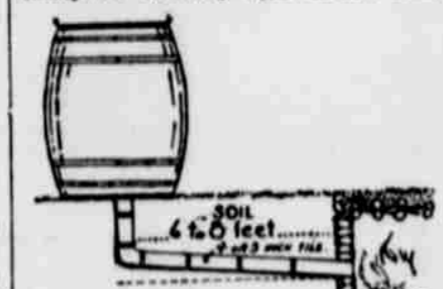
The Queen of Greece, a sister of the Kaiser, who is said to have exerted an influence against Greece entering the war on the side of the allies.

Silage In Summer.

The dairyman who still has silage on hand for use during the summer should consider himself fortunate. There may be many of our readers who are having their first experience in feeding silage. These should bear in mind the fact that exposed silage spoils very quickly in the warm weather. Spoiled silage is not good for any kind of stock, and special precaution should be taken in handling silage during the summer time to prevent spoiling. During the winter time as small a quantity as an inch of silage may be removed daily from the surface without having any spoiling take place. In the summer time a much thicker layer must be removed. For this reason a silo specially designed for summer use should be smaller in diameter than a winter silo for feeding the same number of cattle. Where silage is left over and is being fed during warm weather the use of a tarpaulin on the surface of the silage will save some spoiling. Silage can be fed from one-half of the silo at a time. The purpose of the tarpaulin is to exclude the air from the surface as fully as possible.

"Cold Smoke" Smokehouse.

In smoking summer sausage be very careful not to get the temperature above 70 degrees F. In other words, the sausage should be smoked with cold smoke. If you have a low smokehouse it is better to make a smokehouse for cold smoke, as shown. The sausage should be smoked for from thirty-six to forty-eight hours, being



very careful to have a continuous fire. A large piece of wood with a big knot in it will smoke all night.

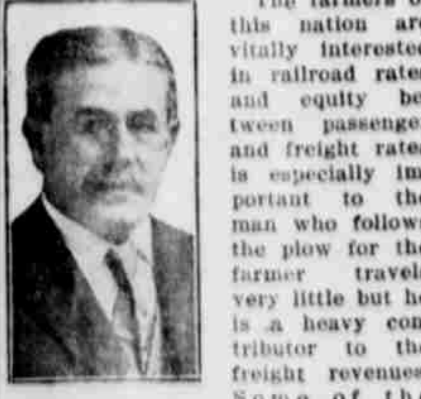
The sausage should be kept in a cool, well ventilated place. A little mold will improve the sausage, but if it spreads all over the skin it is harmful, because it gives a moldy flavor. If it begins to get too moldy rub off the mold with a cloth dipped in a mixture of salt and lard.

This sausage is eaten cold. A good way to keep it is to pack it in oats, as they will absorb the moisture, but it ought to be well wrapped in cheesecloth if packed in oats.—Minnesota Bulletin.

The Argus, \$1.00 the year. The Argus, \$1.00 the year.

OUR PUBLIC FORUM

II--L. E. Johnson On Two-Cent Passenger Rates



The farmers of this nation are vitally interested in railroad rates and equity between passenger and freight rates is especially important to the man who follows the plow for the farmer travels very little but he is a heavy contributor to the freight revenues. Some of the states have a two cent passenger rate and whatever loss is incurred is recovered through freight revenue. The justice of such a procedure was recently passed upon by the Supreme Court of West Virginia and the decision is so far-reaching that we have asked L. E. Johnson, president of the Norfolk and Western Railway whose road contested the case to briefly review the suit. Mr. Johnson said in part: "Some ten years ago, passenger fares were fixed by the legislatures of a large number of states at two cents a mile. As a basis for such economic legislation, no examination was made of the cost of doing the business so regulated, nor was any attention given to the fact whether such a rate would yield to the railway companies an adequate or any net return upon the capital invested in conducting this class of business.

both the State and the Railway Company testified that the claims of the railroad were sustained by the facts. Two cents did not pay the cost of carrying a passenger a mile. The State, however, contended that the railroad was earning enough surplus on its state freight business to give a fair return upon the capital used in its passenger as well as its freight business. For the purposes of the case, the railroad did not deny this, but held to its contention that the State could not segregate its passenger business for rate fixing without allowing a rate that would be sufficient to pay the cost of doing business and enough to give some return upon the capital invested in doing the business regulated. This was the issue presented to the Supreme Court. Its decision responds to the judgment of the fair-minded sentiment of the country. The Supreme Court says that, even though a railroad earns a surplus on a particular commodity by charging a particular rate, that affords no reason for compelling it to haul another's person or property for less than cost. The surplus from a reasonable rate properly belongs to the railway company. If the surplus is carried away by an unreasonable rate then that rate should be reduced. The State may not even up by requiring the railroad to carry other traffic for nothing or for less than cost.

The decision is a wholesome one and demonstrates that the ordinary rules of fair dealing apply to railway companies. The fact that one makes a surplus on his wheat crop would never be urged as a reason for compelling him to sell his cotton at less than cost. It would not satisfy the man who wanted bread to be told that his high price enabled the cotton manufacturer to get his raw product for less than cost. In this case the court reaffirmed the homely maxim that each tub must stand upon its own bottom."

Demonstration

of Motor Car Operation & Lubrication

An opportunity for motorists to get posted on the operation and lubrication of their cars. Stripped chassis of White and Ford Cars on exhibition with housings of motor, transmission and rear axle cut away so that the mechanical operation and lubrication can be seen. All working parts in action. Automobile engineer in attendance. All are cordially invited.

NOW GOING ON AT

Ford Garage

THIS DEMONSTRATION WILL CONTINUE UNTIL JULY 3, INCLUSIVE

OPEN EVENINGS

Standard Oil Company

(California)