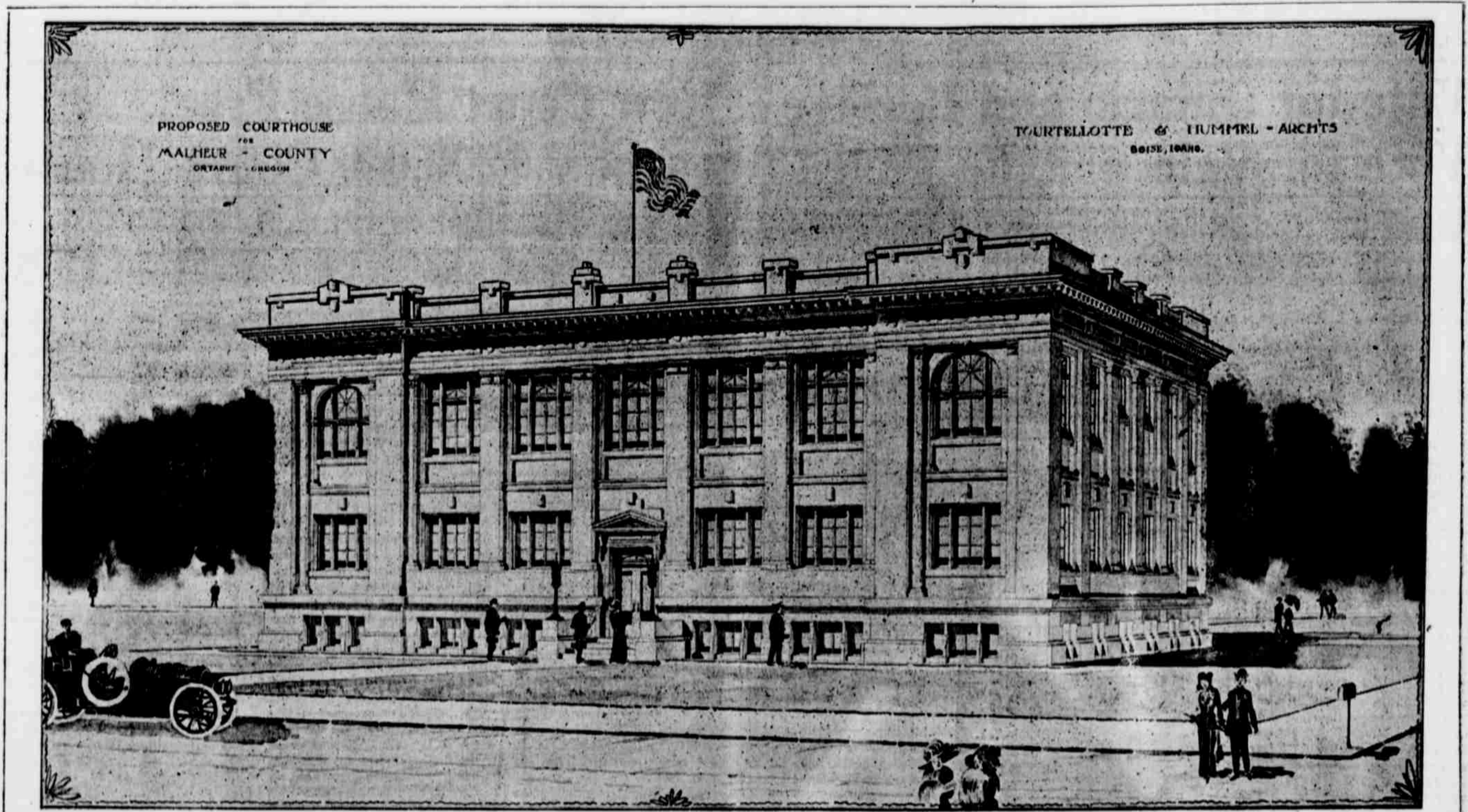


THE COURT HOUSE ONTARIO PROPOSES TO BUILD

For Malheur County. Bonds have been Voted and Sold and Money is Now On Deposit in the First National and Ontario National Banks to Complete and Equip the Building.



COMPLETE PLANS AND SPECIFICATIONS OF THE NEW COURT HOUSE—PREPARED BY TOURTELLOTTE & HUMMELL, ARCHITECTS.

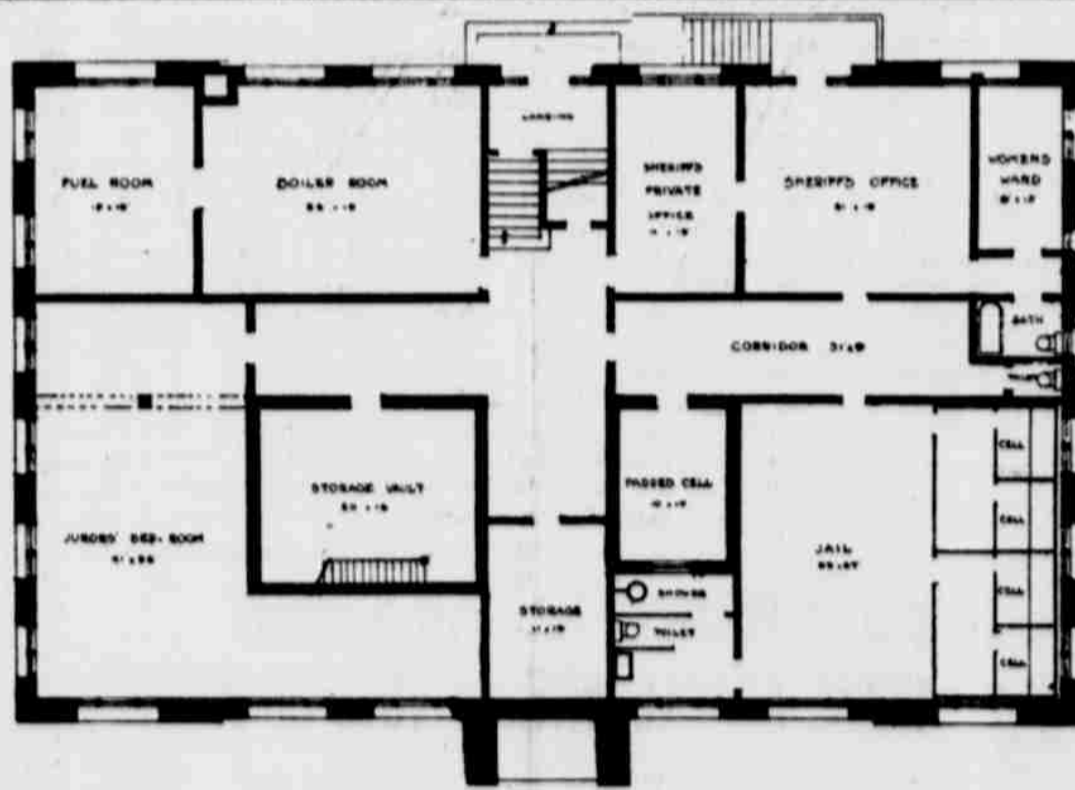
The proposed court house for Malheur county to be built by the citizens of Ontario, Oregon is 96 by 60 feet on the ground and consists of three floors, basement, first and second floors.

The basement is nine feet high, with ceiling five feet above the ground level. Half this story is planned for the county jail, consisting of the sheriff's public office, 21x19 feet; sheriff's private office, 11x19; woman's ward 8x15 with bath and toilet; padded cell 10x14 and jail 29x27, with four steel cells and steel corridors. The jail also has a bath and toilet room. The sheriff's office has a separate entrance on the rear of the building as well as from the corridor. The jail walls and ceiling will be of reinforced concrete. All the windows in the jail will be fitted with total proof steel window gratings. The remainder of the basement consists of a storage vault 16x20 with stairway to vault in county clerk's office above. This vault is to be used for storage of old county records. Alongside is a large dormitory for jurymen's sleeping quarters.

The boiler and fuel rooms are across the corridor from the vault and dormitory and are large and well suited to their use. The stairway leads to a landing on the ground level on which level is the rear entrance to the building, and continues to the first floor.

The first story contains the administrative offices. The ceiling height is twelve feet. On the left of the main entrance corridor are the quarters of the county clerk; a large public office 27x19 feet, a private office 9x13 feet; a record vault 16x20 feet with iron stairs to the storage vault in the basement. The public office is divided into a public space and a working space by a counter-deck running the full width of the room. The treasurer's office on the right side of the main entrance has the following rooms: a public office 29x27 feet divided into a public space and a working space; a private office 11x12 feet and a vault 10x14 feet. Across the hall is the county assessor's office; a public office 28x18 feet and a private office 11x19 feet. On the left is the county court; a room 28x19 feet, and a private office 11x19 feet for the use of the county judge and the county commissioners. The vaults on this floor are fire proof with fire-proof and burglar-proof doors. At the ends of the longitudinal halls are the women's and men's toilet rooms.

The second or top floor of the building is devoted to the District court; the county school superintendent's office, 25x19 feet, and the county surveyor's office, 16x19 feet. The court room is 64x27 feet, well proportioned and splendidly lighted, with a public space



that will seat 150 spectators without crowding. In front of the bar is the judge's bench, the court stenographer's desk, the witness stand, the jury box and the attorney's table. To the rear of the judge's bench and opening into the court room are the District Judge's chamber, 15x17, and the stenographer's office 15x9 feet. At the opposite end of the court room is located the jury room, 14x22 feet; opening into the hall. This room has a private toilet. The left portion of this story is divided into a grand jury room 15x19; and two rooms, 13x19 and 12x19 for the use of the county attorney. The toilet rooms for men and women are at the ends of the hall. This story has a ceiling height of fourteen feet.

The exterior of the building is in the Classical style. The base course is 6 feet 6 inches high, of concrete marked off to represent clean cut ashlar. The building above the base course is faced with pressed brick. Large pilasters, with Doric caps and bases of stone, run through from the base course to the underside of the entablature. The parapet wall above the cornice is of brick with coping of stone. The windows are large and all have square heads, except the second story windows in the end bays, which have semi-circular arches. The main entrance doorway is crowned with a triangular pediment of stone supported on carved stone brackets. The doorway is framed with a moulded stone architrave. The main entrance steps of concrete are flanked with stone abutments on which rest large electroliners of wrought iron.

The foundation of the building is of concrete with concrete footings. The walls of the superstructure are of brick faced with pressed brick. The vaults have walls, floors and ceilings of reinforced concrete.

The partitions and floors have wooden studs and joists. The interior is plastered with Gypsum plaster and the finish woodwork is Oregon fir. The basement floor is concrete, the others being finished with Oregon fir flooring.

The building is heated by steam, plumbing modern and up-to-date. The lighting is laid out according to the latest and most scientific methods of electric lighting.

This building, including mechanical equipment, can be built for \$25,000.
TOURTELLOTTE & HUMMELL, Architects.

All the following buildings, designed by Tourtelotte & Hummell, have been completed within the cost as estimated by the architects:

- Idaho State Capitol building, Boise.
- Boise High School, Boise.
- Overland building, Boise.
- Owyhee Hotel, Boise.
- Boise City National Bank, Boise.
- Elks Club building, Boise.
- Administration building, University of Idaho, Moscow, Idaho.
- Nampa Department Store, Nampa.
- Hotel Washington, Weiser.
- Baker Loan and Trust Company, Baker.
- Administration building, Willamette University, Salem, Oregon.
- Ontario National Bank building, Ontario, Oregon.

