

Malheur Mercantile

Company

Special for 10 Days on
Table Linens

On our whole stock of Table Linens and Napkins we will allow for one week only

10 Per Cent. Off for Cash

We Are Overstocked On These Goods
---All New Stock

Gloves

Special on Gloves for One
Week Only

Malheur Mercantile Co.

AN

EXCEPTIONAL

OFFER

The Fruit Grower & Farmer

Regular Subscription Price **\$1.00**

Kimball's Dairy Farmer

Regular Subscription Price **.50**

Standard & Poultry World

Regular Subscription Price **.50**

Woman's World

Regular Subscription Price **.50**

Vegetable Grower

Regular Subscription Price **.50**

Ontario Argus

1.00

\$4.00

All Six Publications for only \$1.50

A Saving of \$2.50

How 17,000 Gymnasts Appeared On Germany's New Athletic Field

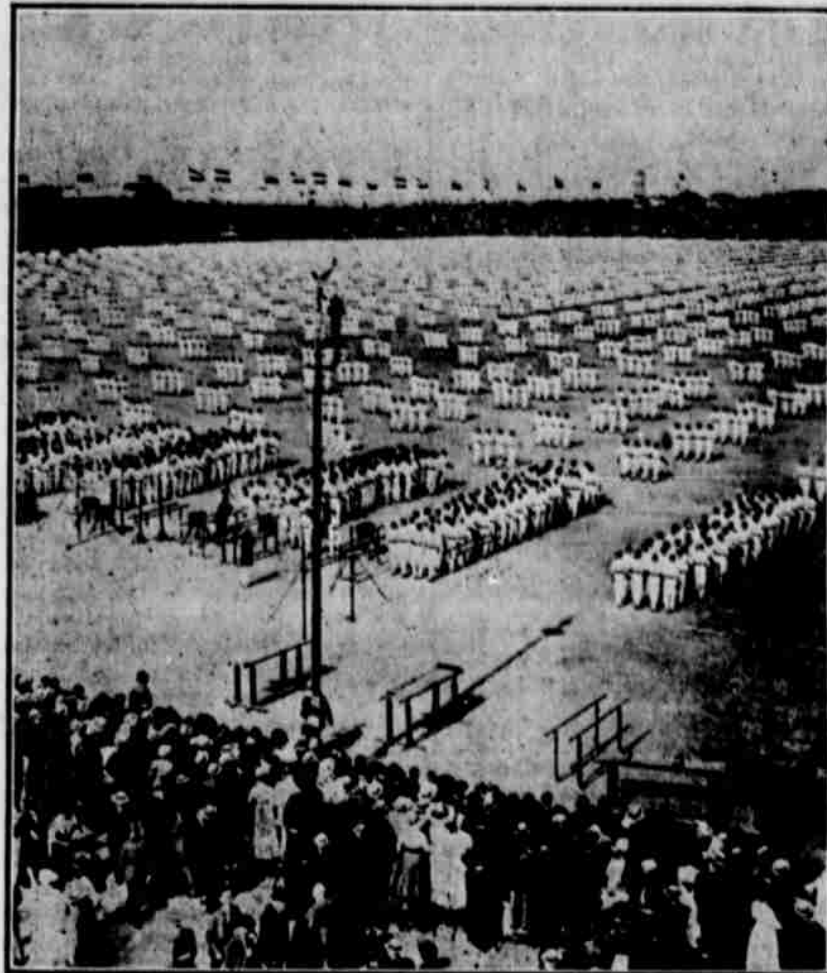
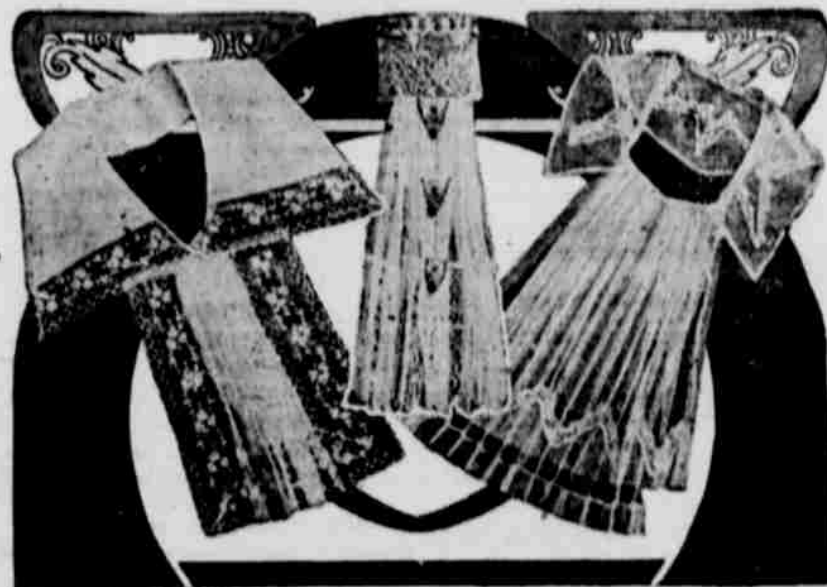


Photo by American Press Association.

PLEASE imagine 17,000 trained gymnasts, all clothed alike, in action at one time on an immense field. To the strains of music they go through their calisthenic movements with perfect rhythm and practically as one man. Such an inspiring sight was witnessed recently at Leipzig, Germany, when more than 100,000 athletes took part in games and contests there. The picture shows a section of the 17,000 as they appeared on the field. A gigantic stadium was built to seat the spectators, which was four times as large as that at the Olympic games at Stockholm. This stadium is permanent. The Olympic games in 1916 will be held there.

NEW COLLARS AND JABOTS FOR WEAR WITH FALL GOWNS



FALL NECKWEAR.

NECKWEAR in three charming designs, suitable for wear with the fall or winter gown, is shown here. The design to the right is a sailor collar of lawn and machine embroidery, with a plaited jabot. The second is a lace stock with a jabot of net and lace. The third is a novelty collar of net trimmed with lace bands. The collar and jabot are expected to retain their popularity for some time, giving a successful touch of elegance to an otherwise plain blouse.

Here's the Only Movable Tunnel On the Map and It's Unique

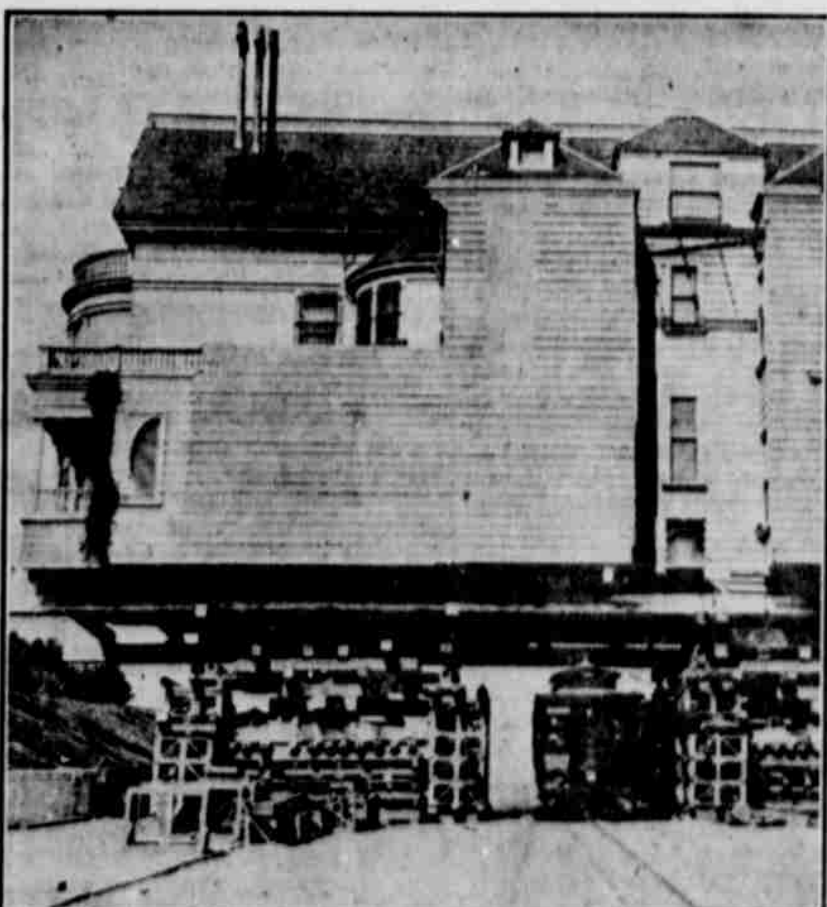


Photo by American Press Association.

CALIFORNIA boasts of many big and odd things that the rest of the country does not possess, such as giant redwood trees and sixty-seven varieties of climate, but now it is capping the climax with the only movable street tunnel in the country. This unique tunnel is formed under the old residence of Adolf Spreckles, which is being moved. When the contract for the removal of the house was signed the street railway company objected to the obstruction of traffic, and it forced the movers to elevate the house so that cars could pass beneath it. The movers proceeded via the aerial route. The picture shows a street car passing through the movable tunnel.

THE POPULARITY OF FILMY TULLE

As the Season Advances the Uses
of This Airy Fabric Are In-
finitely Varied and Multiplied.

TULLE is seen everywhere. Its lavish use is one of the distinctive features of the season's fashions. This demand for the fabric has brought improved qualities and various weights. We even have so called rainproof tulle. The vogue for tulle first was noticed in millinery. Quite early in the season tulle hats began to be popular. The tulle was mounted on wire frames or combined with other trimmings on the hats. These tulle hats were popular because they were light and cool, a quality prized in a summer headgear.

Airy Summer Hats.

Besides being mounted on wire frames, tulle crowns were mounted on brims of soft straw. The use of great wired butterfly bows of tulle has been popular. So, too, have plaitings and frills of the tulle around the brim of hats.

Tulle is lavishly used in the manufacture of sashes and waist trimmings. On white cotton and eponge summer frocks a sash of colored or black tulle frequently gives the requisite touch of relief. These are sometimes finished with long floating ends at the back and at others ending in a fanlike bow with uncut edges similar in style to those so much worn at the throat.

But tulle is by no means used exclusively where sashes and belts are concerned. We find all manner of materials combined with it, from soft satin and velvet to embroidered muslins and brocades.

Sashes are made of two or more materials, such as satin and tulle, velvet and chene ribbon or of self color-



NEW AFTERNOON GOWN.

ed satin, the ends embroidered in Bulgarian colorings and finished with fringe. Tassels again are frequently used to finish the ends of sashes, and when a ribbon is the medium employed the ends are sometimes lightly frayed out or else cut off at an angle with a sharp pair of scissors.

Tulle Blouses.

The delightfully filmy character of tulle renders it especially appropriate for the picturesque blouse styles now so much in evidence, and in no way is it brought into better service than in the falling frills that form so effective a detail of many blouse designs.

In order to maintain the decreed airy fairy aspect, these frills are frequently left with raw edges, or at most whipped light picot stitch, the picot stitch, of course, adding considerably to the wear.

For tulle blouse two colors are suggested, the one fashioning the upper part and frill and the other in an accordion plaited quality, the lower part of the bodice and sleeves. This would work out charmingly in ivory and "periwinkle" blue, the latter employed for the lower half of the scheme, while a pretty effect may be achieved by uniting the two colors with a very fine open lace heading.

It will be necessary, of course, to mount the transparencies on a foundation of some sort.

The Oriental Suggestion.

Many new frocks from Paris show the Japanese influence. Bodices are finished simply with a hem and crossed kimono fashion over the bust, but at the back skirts are drawn in around the feet like the narrow draperies of the geisha maid, and broad sashes precisely like the Japanese obi are tied in huge butterfly bows, the loops being caught up against the shoulder. These sashes are made of soft silk, like boussine or messaline, and the ends are weighted. Tulle, net and chiffon sashes are weighted and trimmed with fringe or bands of fur or marabou.

The gown illustrated here has a decided suggestion of the oriental with its little coat of crepe de chine like the material of the skirt, adjusted over a blouse of soft white net.