

# The Chemawa American.

VOL. VI.

CHEMAWA, ORE., SEPTEMBER 4, 1903.

NO. 44

## Another School Year at Hand.

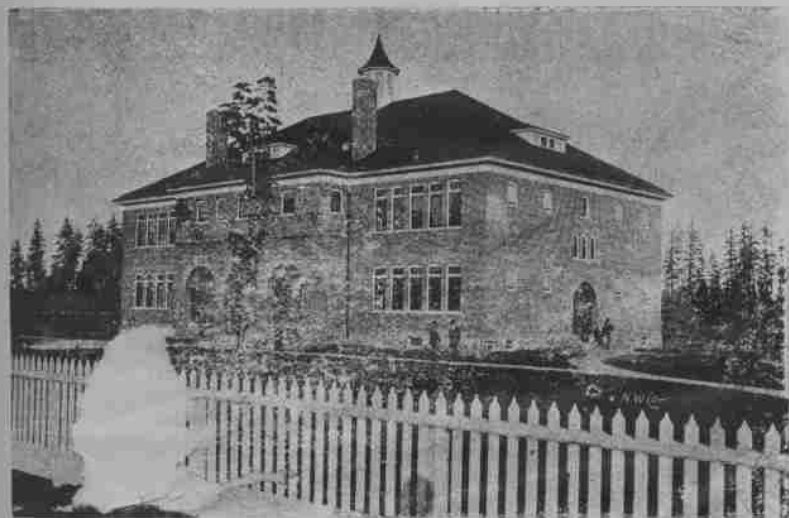
Each year sees many new faces at Chemawa and a larger number of names on the roll. Last year the number reached nearly 800, and this year it will likely be further increased. Chemawa is fortunate in its location, being surrounded by all the environments of civilization. The mild, warm climate of Oregon is equally suited to the health and happiness of the Indian pupils.

Chemawa has grown within a very few

stop at the school gate daily, which is a great convenience.

### THE GROUNDS.

The place possesses many of the advantages and none of the disadvantages of a city. The buildings are heated with steam heat and lighted with electricity. The walks about the grounds are made of concrete and lined on either side with shade trees and rose hedges. A first class sewer system extends over the grounds and con-



THE SCHOOL BUILDING.

years from a single school building to one of the largest Indian schools in the United States and contains over thirty-five buildings, surrounded by beautiful lawns and flower gardens, with here and there a fountain splashing in the sunshine. Being situated on the Southern Pacific railroad, 47 miles from Portland and only five miles from Salem, it is in close touch with the outside world. Four overland and two local passenger trains

connects with all the buildings.

The water supply is furnished by several large wells ranging from 60 to 80 feet in depth and the most modern steam pumps are used. An abundant supply of water is furnished for the lawns, fire protection and general purposes of the school. Large water hydrants are placed in different parts of the grounds to be used by the fire companies in case of need.

A large electric light and power plant