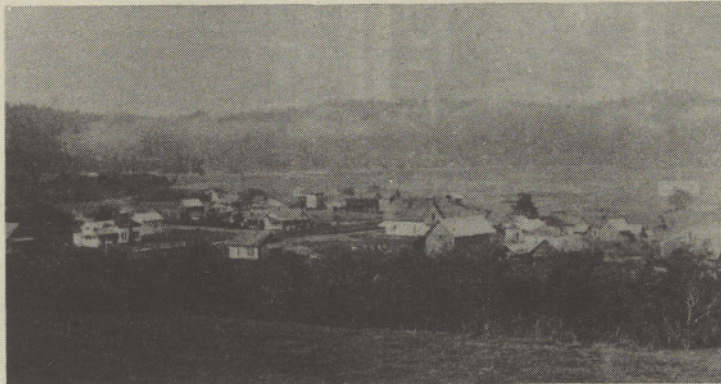


Reflections of Time



Siletz Village — 1925



Abram Logan — Home, located about 35 miles north of Siletz Agency, on Salmon River. Wife; Louisa Logan, son; Elmer Albert Logan, son; Augustine Logan, twins; John & Jack Logan.



King Rippon — Home — 1925, located about 12 miles east of agency. Wife; Lena Rippon. Children not listed.



Elizabeth Blacketer — Home — 1925, located about eleven miles east of agency. Son; Charles Blacketer, son; James Blacketer, Jr., daughter; Lola Blacketer.



John Albert — Home — 1925, located about 10 miles east of agency at Logsdan. Wife; Eliza Albert.



William Umatata — Home — 1925, located about 2 miles east of agency. Wife; Mary Umatata.

(From Siletz Industrial Survey — 1925)

Reflections of time will be a regular article in the Siletz News. All black and white photos are welcome. Please print your name and address on the back so the photos may be returned.