

Mr. and Mrs. Archie Hendricks were in Albany over the weekend on business.

Mr. and Mrs. Claude Goldizen were in Medford Friday on business, returning the same day.

A large Alfino Seal has been seen frequently lately on the rocks south of the mouth of the Chetco. It is always alone, so it may have been driven out of the group of seals as an Alfino is seldom seen alone.

FEATURE STORY GIVES AREA PLUG

Two full pages in the Coos Bay Times Friday gave Brookings and Harbor plenty of publicity--most of it good.

The story was written by staff writer Drew McKillips, who spent two days in Brookings last week.

McKillips, who recently returned to this country from Australia, wrote a remarkably accurate account of the area, which included historical data, and statistics on the growth and progress here.

The story painted a rosy picture of the future of the community.

It was accompanied by 11 pictures, including Mayor Fell Campbell, lily grower Joe Zumpfe and D. D. Williams.

ELKS ANNUAL CONVENTION MAY 30, 31, JUNE 1

Elks will find plenty to do when they meet on May 30, 31, and June 1, when they meet in Coos Bay for the 1957 Oregon State Elks Convention.

Howard Maple, general chairman, released a program including sports events, dances and dinners.

THREE ATTEND SENIOR WEEK

Jerry Anderson, Stan Gribble, and Ron Lane were among some 250 high school seniors from the northwest who attended the annual Senior week end at Linfield college in McMinnville last week end.

The high school students were guests of the students, and lived in college dormitories and had their meals in the college commons while on campus.

DOUG GOLDSBERRY WINS ROTC AWARD

Doug Goldsberry, son of Mr. and Mrs. Virg Goldsberry of Brookings was recently awarded an Army ROTC Military Science I Commendation award.

The awards are based on achievement in the military class work and on the drill field during winter term.

Goldsberry is a freshman in pre-med.

PRICE INDEX CONTINUES DOWN

Although the stock market has been in a vigorous rally, lumber is not participating, and Crow's Lumber Price Index is down all along the line compared to two weeks ago. Green Douglas Fir studs, specified dimension (framing lmb), plank and timbers are all on the weak side but studs are not easy to buy at the bottom end of the price spread.

Standard grade kiln-dried Douglas Fir dimension and 2 x 6 and wider lower grades helped pull that segment of the Index down.

LT. HASSET WRITES

Lt. Charles Hasset has written from Tokyo, Japan, where he has been stationed, that he is due home on a 30 day leave in June. He'll then be stationed at Alamogordo, New Mexico, Holloman Air Force base, which is a guided missile test center. He is a weather observer. He is scheduled to go to graduate school in February, 1959.

HOME EC MEETS

Home Economics Club will meet at the Grange Hall Friday May 10th at 2:00 PM. Members are asked to bring favorite recipes.

JOHN B. EBINGER

Attorney and Counsellor at Law
(Formerly U. S. National Bank Bldg., Klamath Falls, Ore.)

Announces

Opening of Offices for the

General Practice of Law

at

706 CHETCO AVE.

Phone 4333 Brookings, Oregon


DO YOU KNOW? BY BANK & CHOPPER WESTBROOK

That the SWASTICA originated in either CHINA or INDIA? (It was a mystic symbol among the Buddhists who still use it)

People who get plenty of COUNTRY MAID MILK in their diet are the 'SYMBOL' of health! You should be using it, too!

SMITH RIVER 516
Yes Sir -- I want Country Maid Dairy Milk

Country Maid DAIRY MILK Fresh Pure Rich Safe

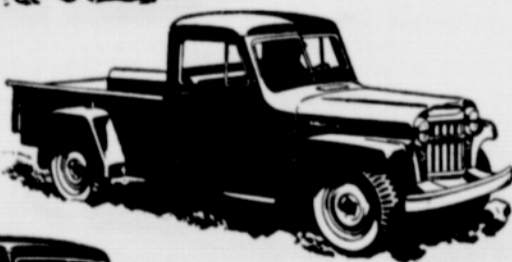


Let us prove what a 'Jeep' vehicle can do for YOU!



The New Forward Control 'Jeep' FC-150... puts a 74" pickup box on a wheelbase only 81" long.

The 'Jeep' Truck... works for you 365 days a year.



The 'Jeep' Utility Wagon... dual purpose vehicle for business and family.

The Universal 'Jeep'... does hundreds of jobs.



See your nearest 'Jeep' dealer!

It's good insurance and good business to see from an actual on-the-job demonstration just how a 'Jeep' vehicle can help you get more work done every day in the year on your jobs.

These vehicles are rugged, powerful and versatile! They have the extra traction of 4-wheel drive to take you and a full payload over the roughest terrain, in good weather or bad. On the highway, they shift easily into conventional 2-wheel drive for travel at top legal speeds. And, with power take-off, they operate a wide variety of special equipment.

There's a 'Jeep' vehicle ready to fill your specific needs. Get an actual demonstration and prove to yourself that a 'Jeep' vehicle will do your jobs best.

The **'Jeep'**

family of 4-Wheel-Drive vehicles

WILLYS... world's largest manufacturers of 4-Wheel-Drive vehicles

Loring's Sales & Service 624 Chetco Ave - Brookings

CHETCO INN



DAILY RATES
Singles \$2.00 up
WEEKLY RATES
Singles \$10.00 up
Bachelor Apt.

CLEAN & COMFORTABLE ROOMS

FIREPLACE & TV IN LOBBY

COMMERCIAL RATES
EDNA SPARKS, Managtr
Phone 2624