



PRESIDENT ROOSEVELT AND BASIL O'CONNOR ORGANIZE THE MARCH OF DIMES IN 1938 TO FIGHT POLIO.



YEAR AFTER YEAR MARCH OF DIMES AIDS VICTIMS WHILE SPEEDING RESEARCH AND TRAINING EXPERTS.



DR. JONAS SALK GIVES FIRST POLIO VACCINE IN 1953.

MORE THAN 43,000,000 UNDER 35 RECEIVE VACCINE BY END OF 1956.



POSTAGE STAMP ISSUED JANUARY 1957, HONORS MARCH OF DIMES VOLUNTEERS.



THOUSANDS OF VICTIMS STILL NEED HELP... MILLIONS OF OTHERS STILL NEED PROTECTION

### Ore. State Driver Convictions High

Oregon courts convicted 133,740 drivers of violating traffic laws last year, the Department of Motor Vehicles reported Thursday.

Convictions were up 4500 over the previous year.

Nearly 9000 drivers received license suspensions in connection with the convictions or through discretionary action of the license office.

The figures includes 3,533 drivers who had licenses lifted for 90 days or longer after conviction for driving while intoxicated.

A history of too many convictions or accidents brought license suspension to 976 drivers during the year, an increase of more than 350 over 1955.

Other reasons listed for suspension were: auto theft, 8; negligent homicide, 3; hit and run, (personal injury), 2; reckless driving, 717; violation of basic rule, 645; driving without a license, 158; hit and run (no injury), 126; failure to stop at accident scene, 69; failure to yield right of way, 35.

Failure to report an accident, 691; failure to pass test, 96; Failure to appear when requested, 72; failure to complete tests, 27; fatal accident, 33; physical condition, 29; medical reports, 23; and miscellaneous reasons, 528.

Another 1,149 drivers received additional suspension periods when they were caught and convicted of driving while their licenses were suspended.

### O. and C. Timber Sales Down Slightly for Year

Sales of timber in 1956 on O and C forest lands managed by the Bureau of Land Management in western Oregon fell slightly below the record set in 1955 in both volume and value, Virgil T. Heath Oregon State supervisor reported today.

Heath said that final tabulations for the 1956 calendar year showed a timber sale total of 569,779,000 board feet valued at \$20,372,634.66. In 1955 timber sales from O and C lands set a record of 603,229,000 board feet valued at \$21,379,769.60.

The Oregon State supervisor said that the average bid price per thousand board feet for 1956 was \$36.34, compared to \$37.11 in 1955.

Heath's report today corrected predicted figures issued late in December before final tabulations could be made.

### Seven Devils Route Change Discussed

At a recent meeting in North Bend, according to reports, several groups discussed the promotion of the Seven Devils Route for Highway 101. This would virtually make it a straight road from North Bend to Bandon and eliminate the tortuous travel through Coquille and down the river valley.

This was the original route for up-and-down the coast travel for many years but when the highway was further developed pressure was put upon the commission to divert travel through the Coos county seat.

The proposed route could bypass much of the city of Coos Bay and pass through Empire and Charleston.

Postmaster Ted Willard of Empire stressed the fact that if the Seven Devils route was set up as a state highway it would speed up mail delivery between Portland and Brookings at least.

### HOW STRONG IS RUSSIA TODAY?



#### Federal Farm Home Loans Available

Eligible farm owners in Curry county may borrow from the Farmers Home Administration to build or repair farm houses and other essential farm buildings.

Wendell L. Harris, the agency's county supervisor serving local farm families said today.

He said the farm housing loans were made available under recent legislation. A total of \$50,000,000 has been provided for these loans. Interest on the loans will be 4

per cent per year on the unpaid principal. Repayments will be scheduled over periods up to 33 years.

A housing loan will be secured by a mortgage on the borrower's farm.

The agency expects applicants to obtain the building plans and specifications for the improvements to be financed with the loans. To help the borrower obtain construction that meets generally accepted standards of soundness, the Farmers Home Administration will review the plans and inspect the construction as it progresses.

The local Farmers Home Administration county committee will determine whether or not an applicant is eligible for a housing loan. To be eligible, an applicant must be the owner of a farm, be unable to obtain suitable credit for dwellings and other buildings from other lenders, and have enough income from the farm or from the farm and other sources to meet family living and farm operating expenses and repay his debts.

Farm housing loans are made under the authority of Title V of the Housing Act of 1949, as amended.

Further information on the loans may be obtained at the county office of the Farmers Home Administration located in Room 210, Post Office Building, Eugene.

#### HIGHWAY MONEY . . .

The State Highway commission announces income for the last quarter of 1956, from various highway use charges, amounted to nearly \$3 million. This sum is allocated to the various counties on the basis of returns from them of fuel tax, vehicle registration, motor carrier taxes, and fines.

Of this sum, \$22,583.18 is Curry county's share.

TRY THE PILOT

## REFRIGERATION

SALES & SERVICE  
COMMERCIAL & DOMESTIC

"If It's Refrigerated, We Fix and Guarantee It"

FOR YOUR CONVENIENCE  
We Now Have a Man to Serve Brookings

WHITIE RUTLEDGE

BROOKINGS PHONE 3151

Refrigeration Engineer & Mechanic

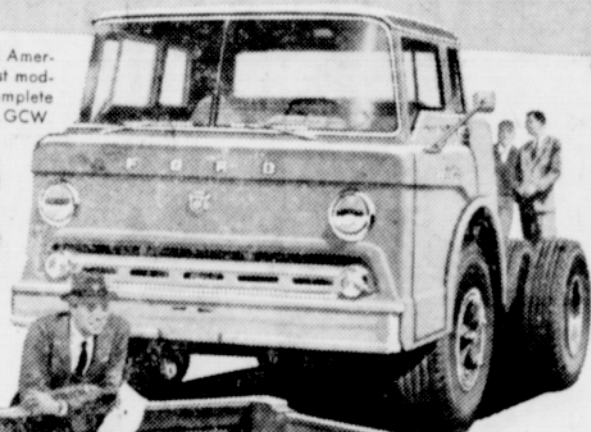
BOB AMES ELECTRIC  
CRESCENT CITY — Phone 3133

# LOOK! NEW FORD TRUCKS for '57

The Ranchero! More than a car, more than a truck—it's a completely new kind of vehicle. A real pack horse that handles more than half a ton.



Totally new Tilt Cabs! America's lowest-priced,\* most modern Tilt Cab line. Six complete new Series, up to 60,000-lb. GVW.



New pickup with Styleside body, standard at no extra cost, gives you stunning style and the biggest capacity of any half-tonner. Available in 6½- and 8-ft. body lengths.

## LOOK again!

They're modern through and through

The boldly modern styling you see just hints at how deep-down modern the '57 Fords really are!

New Ranchero rides, handles and looks like a modern car. It's a rugged truck that carries over half a ton—more than many standard pickups. Ford's all-new Tilt Cab Series brings modern design to the big-truck field. It's America's lowest-priced\* Tilt Cab line.

New Ford pickups back up their modern styling with higher power, completely new cabs, a new kind of ride. Styleside bodies are biggest of any pickup.

The trucks shown here just touch the sweeping changes in the new Ford line for '57. See your Ford Dealer for complete details on the truck to fit your job.

\*Based on a comparison of factory-suggested list prices.

**NEW cabs**—completely new—stronger, roomier, smarter! New wider windshield. New inboard step, new Hi-Dri ventilation.

**NEW hydraulic clutch** standard in all models from pickups to tandems. Easier to operate—works like hydraulic brake. Clutch and brake pedals are suspended type!

**NEW Styleside pickup bodies** standard at no extra cost. America's biggest pickup bodies! Side loading's far easier with full-width body.

**NEW riding comfort!** Big new roomy cabs, completely new chassis suspension and increased visibility improve handling ease.

**NEW chassis strength!** New frames, up to 13% stronger. New sturdier front and rear axles! New higher capacity springs!

**NEW power advances!** Higher horsepower, freer breathing, higher compression ratios, new Super-Filter air cleaner. Short Stroke engine design—V-8 or Six, in every model!

For '57 and the years ahead—  
**FORD TRUCKS COST LESS**

LESS TO OWN . . . LESS TO RUN . . . LAST LONGER TOO!

## DUNNING MOTORS

HIGHWAY 101 NORTH

BROOKINGS, OREGON

SELL IT THRU THE WANT ADS

If you've always thought of bourbon as "too strong"

...try the lighter, milder 86 proof Old Crow! It's just as mild as your present brand of whiskey...and its distinctive taste has started a nationwide trend to light, mild bourbon!

TRY  
**OLD CROW**  
86 PROOF  
\$4.80  
4/5 qt.



OLD CROW DISTILLERY CO., FRANKFORT, KY., DISTRIBUTED BY NATIONAL DISTILLERS PRODUCTS CORPORATION • KENTUCKY STRAIGHT BOURBON WHISKEY