

New Benefits Due on Security

Recent social security amendments will bring new or increased social security coverage to many farmers and ranchers in Humboldt, Del Norte and Curry counties according to Carlos L. Hunsinger, manager of the Eureka office of Social Security Administration.

One significant change relates to the crediting of income received from the rental of farm property on a share-farming basis. In many cases, income of this type is still excluded from social security coverage if you simply collect the rent from the land. However,

under the 1956 amendments, the cash or crop shares a farm owner receives from a tenant or share-farmer is regarded as farm income which will be credited to his social security account if he "materially participates" in the management or production of the farm commodities.

If you have a definite arrangement with the user of the land whereby you regularly advise and consult with him on the production of crops or livestock; regularly inspect the operation; have a hand in management; then this would be a strong indication that you furnish the renter seed, tools, livestock, or farm equipment, or finance any of these, this would be further evidence of "material

Another significant change relates to the optional method which is available to the low-income farmer for computing his net income for taxable years ending December 31, 1956 or later. Previously, these optional methods were restricted to farmers who were sole operators reporting on a cash basis. Under the 1956 Amendments, the options can be used by members of farm partnerships and by farmers reporting on an accrual basis. Under the liberalized optional method, the farmer who has gross earnings of \$1800 or less can claim two-thirds of his gross as net; and the farmer who has a gross of over \$1800, but actual net earnings of less than \$1200, may show \$1200 as his net for social security purposes.

Handicapped Vets Get Materials

Several large cartons of materials, collected by the local VFW post and ladies Auxiliary were recently dispatched to the "home" at Camp White. They were picked up by Carl Stienert of the State Veterans Bureau, who calls in Brookings the first Tuesday of each month, and almost always has some stuff to pick up, either for Camp White or the veterans hospital at Roseburg.

This last batch consisted of two large cartons of stamps for collectors or decorative uses, a big carton of paperbound veneer trimmings, and a sack of nylon hose used in mat making.

Should you have any materials you believe could be used by the handicapped veterans disposition may be arranged through any VFW Post or Auxiliary member.

TEACHERS GROUP MEETS

There was an organizational meeting of a men's teachers group at Gold Beach Wednesday night. Those attending from Brookings were Ralph Fowler, Charence Dial, Gene Allison, Chet Bumbarger, Mr. Giroux and Mr. Powell.

Since a self-employed person must have net earnings of at least \$400 to get credit for the year, it means that a farmer can now receive credit for social security purposes under the optional method for any year in which he has gross earnings of \$600 or more.

These changes are effective for any taxable year ending on or after December 31, 1956. Farmers and ranchers in this locality having further questions are invited to write to the Eureka district office of the Social Security Administration for information and literature on this subject. A new free pamphlet is available for the asking.

SOME FUN!



"NO USE, CAPTAIN! SHE WON'T STOP TALKING."

"It's the boys, on the way in for some sunshine—"

Sunny Brook bourbon, that is!"



\$2.80 pt. \$4.35 1/2 qt

ALSO AVAILABLE Kentucky Blended Whiskey in the traditional round bottle



Kentucky Straight Sunny Brook Bourbon

Cheerful as its Name!

THE OLD SUNNY BROOK COMPANY, LOUISVILLE, KY., DISTRIBUTED BY NATIONAL DISTILLERS PRODUCTS CORPORATION BOTH 86 PROOF • KENTUCKY BLENDED WHISKEY CONTAINS 65% GRAIN NEUTRAL SPIRITS

Juvenile Department Plans to Locate Receiving Homes in Curry County

The newly formed Juvenile Department of Curry county plans on establishing and developing receiving homes in Brookings, Gold Beach, Port Orford and Langlois. These homes will be used to provide children with care while in custody pending court hearings. Ages of the children would range from infancy to adolescence.

In accordance with Oregon's laws, the homes will be certified and licensed by the State Public Welfare Commission. The Curry

County Public Welfare commission will evaluate the homes and provide information to applicants regarding requirements.

Both the Juvenile Department and the Curry County Public Welfare Commission are also seeking foster homes in which children can be placed until it is possible to return them to their own homes.

Persons interested in caring for children in their homes or wishing additional information are requested to contact Mr. H. D. Olney, administrator, Curry County Public Welfare Commission, Gold Beach.

Curry County Judge Guy Forsyth has this to say about the program. "This has long been an urgent need. There should be such facilities in all areas of the county. The court will then be in a much better position to act in the best interests of the children coming before it. Current trends indicate a constantly increasing need in this respect."

Rave reviews from the auto critics!

"Beyond a question of a doubt, the 1957 Mercurys are the most different cars of the year . . . For those who've been shouting against warmed-over hash and crying 'Give us something new!' the answer is simple: this is it— a Space Age design for earth travel . . . It has more new features than any car tested in over ten years."

Tom McCahill
in MECHANIX ILLUSTRATED
Nov. '56, Jan. '57

"Mercury is the car for you if you want a distinctively styled medium-priced car that isn't a carbon copy of any other automobile."

CAR LIFE—Jan. '57

"Marks the first time an entire passenger car line has been based so quickly and almost completely on a dream design . . . Mercury has certainly made the biggest break with the past for '57."

MOTOR LIFE
Dec. '56, Jan. '57

"Redesigned from the tires up . . . the most unusual U.S. car . . . from its new sculptured styling to its refined suspension, it's a leader."

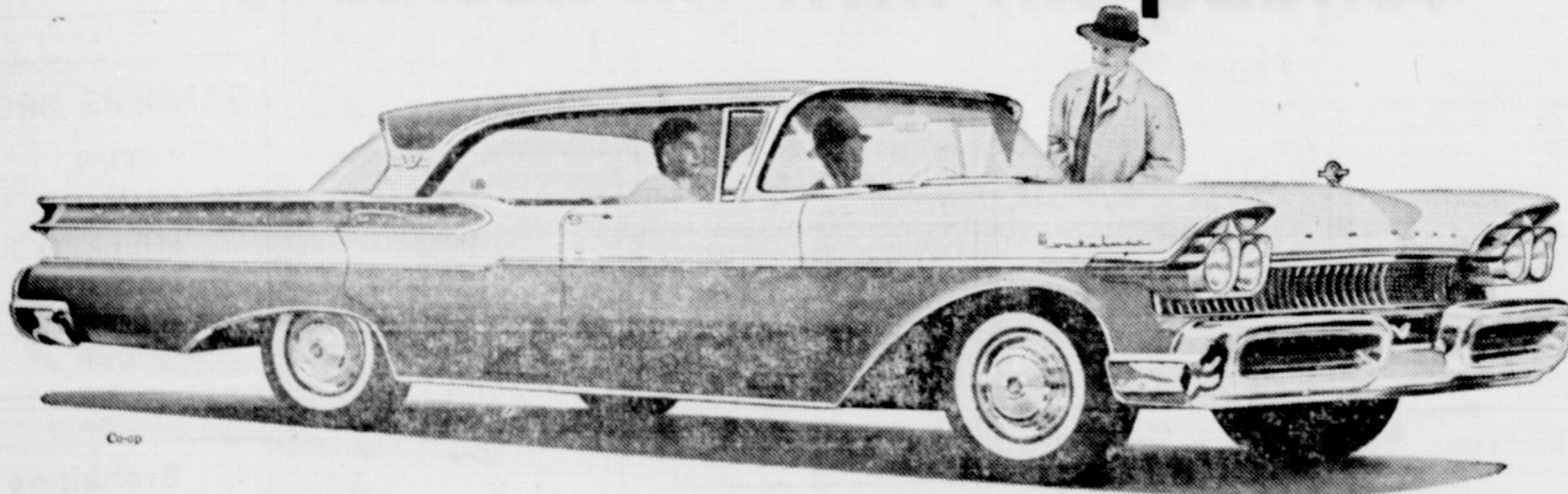
MOTOR TREND—Oct., Dec. '56, Jan. '57

"Mercury is spectacularly different." **POPULAR MECHANICS**—'57 Car Facts Book



Richard and Linda Bliss had a baby girl born on January 21, at the Seaside hospital. Dr. Ronniger was in attendance.

A smash hit with the public!



To meet the landslide buyer demand, the largest manpower force in Mercury's history is working overtime in all assembly plants to produce a record 40,000 BIG M's in January alone . . . a Mercury a minute, every minute of the day and night. THE BIG M is the smash success of 1957. The reason? . . . value! Never before has so much bigness and luxury cost so little! Why not stop in and see your Mercury dealer today?



MERCURY for '57
with DREAM-CAR DESIGN

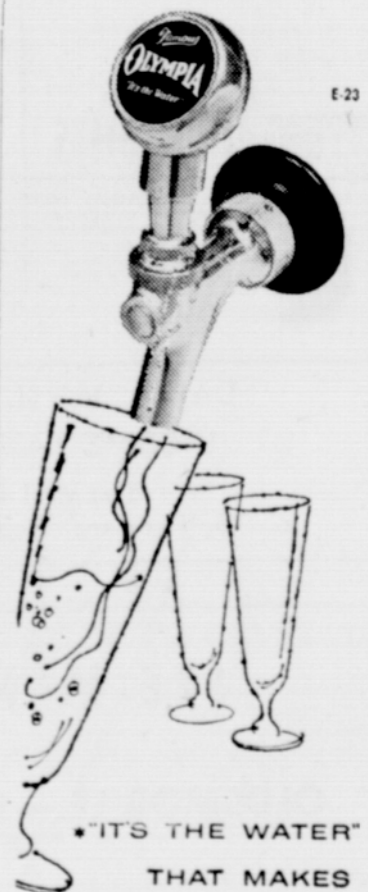
DUNNING MOTORS

HIGHWAY 101 NORTH

BROOKINGS, OREGON

Try a Pilot Ad

OLYMPIA
with pleasure!



"IT'S THE WATER" THAT MAKES IT SO REFRESHING

OLYMPIA BEER CO., PORTLAND, OREGON, U.S.A.