

Ellen E. Dougherty
Democrat
for
County Clerk



My Pledge to You
HONEST, EFFICIENT MODERN SERVICE
with NO favoritism

Pd. Pol. Adv.

With the Churches

BROOKINGS PRESBYTERIAN CHURCH

V. F. W. Hall
Pioneer Road and Pacific Ave.
Henry M. Ostermeter, Minister
Sunday School 9:45 a.m.
Morning Worship 11:00 a.m.
Westminster Fellowship 6:00 p.m.
Church Session 2nd Monday each month at 7:30 p.m.
Women's Association 2nd Wednesday each month at 7:30 p.m.
Choir Rehearsal each Saturday each month at 1:45 p.m.
Afternoon Circle 4th Wednesday at 1:00 p.m.

STAR OF THE SEA CATHOLIC CHURCH

Oak and Redwood Sts.
Father Emil H. Kies
Sunday Mass Schedule — First Sunday of month, 7:00 a.m.; Sung High Mass 11:00 a.m.; all other Sundays, 7:00 & 8:00 a.m.
Daily Mass, 8:00 a.m.; First Friday and Holy Days of Obligation, 7:00 p.m.

Confessions before all Masses, and Saturday evening, 7:30 to 8:30 p.m.

Catechetical Instruction for elementary school pupils on Saturday mornings, 10:00 to 11:15 a.m.; for high school students, 1st and 3rd Wednesday evenings, 7:00 to 8:00 p.m.

Choir practice every Friday at 7:30 p.m. in church.

Altar Society meets regularly on first Tuesday of the month at 8:00 p.m. in the parish hall.

Confraternity of Christian Doctrine meets regularly on 3rd Monday of the month at 8:00 p.m. in the parish hall.

SEVENTH DAY ADVENTIST CHURCH

Elder Melvin Tompkins, Pastor
Sabbath School, Sat. 9:30 a.m.
Preaching Service 11:00 a.m.
Prayer Meeting, Wed. 8:00 p.m.
Choir Rehearsal, Fri. 7:00 p.m.
Dorcas Meeting, Tue. 10:00 a.m.

CHRISTIAN SCIENCE CHURCH

Corner of Pine and Alder across from the Greenhouse
Sunday School from 9:45 to 10:30 a.m. Children and Young People up to the age of 20 are all welcome.

Services Sunday at 11:00 a.m.
Testimonial meeting on the 1st and 3rd Wednesdays at 8:00 p.m.
The Reading Room in the church is open on Wednesday from 2:30 to 4:30.
All are cordially invited.

BAPTIST COMMUNITY CHURCH

Pacific Avenue
Rev. Walter Sadler, Pastor
Sunday School 9:55 a.m.
Morning Worship 11:00 a.m.
Youth Fellowship 6:30 p.m.
Evening Worship 7:30 p.m.
Prayer Meeting, Wed. 7:30 p.m.
Choir Rehearsal, Thur. 8:00 p.m.
Cherub and Junior Choir Rehearsal, Sat. 10:00 a.m.
Crusaders, Saturday 11:00 a.m.
Women's Missionary Meeting, 3rd Thursday in the month.
If you have no church home we invite you to worship with us.

FAITH LUTHERN CHURCH

Services are held at the Seventh Day Adventist Church, Brookings
Joseph Galambos, Pastor
Sunday 9:30 a.m.
Sunday Worship 11:00 a.m.
Thursday
Youth League 7:00 p.m.
Adult Mem. Class 8:15 p.m.
Tune in "The Luthern Hour" every Sunday, KEIM, 5:30 p.m.
TV, "This Is The Life" 5:00 p.m.
Everyone is welcome to our worship.

ST. TIMOTHY'S CHURCH

Episcopal
Fir St. and Azalea Park Drive
Rev. David V. A. Browne
Phone 2994
Sunday 9:00 a.m.
Morning Worship 9:00 a.m.

1st, 3rd and 5th Sundays, The Holy Eucharist
2nd and 4th Sunday Mornings
Prayer 2nd Wednesday
St. Timothy's Guild 7:30 p.m.
3rd Thursday
Altar Guild 8:00 p.m.

ASSEMBLY OF GOD CHURCH

Come and Worship With Us In Each Service
Corner of Oak and Pacific P.O. Box 816 — Phone 3453
Rev. Willard J. Spencer, Pastor
Sunday School 9:45 - 11:00 a.m.
Morning Worship 11:00 a.m.
Young People 6:30 - 7:30 p.m.
Evangelistic Service
Tuesday Evening 7:30 p.m.

BROOKINGS BIBLE CHURCH

303 N. Hazel Street
Rev. E. F. McClain, Pastor
Sunday School 9:45 a.m.
Morning Worship 11:00 a.m.
Youth Meetings 6:30 p.m.
Bible Study and Prayer Meeting, Wed. 7:30 p.m.
We Preach The Bible As It Is—For Men As They Are.

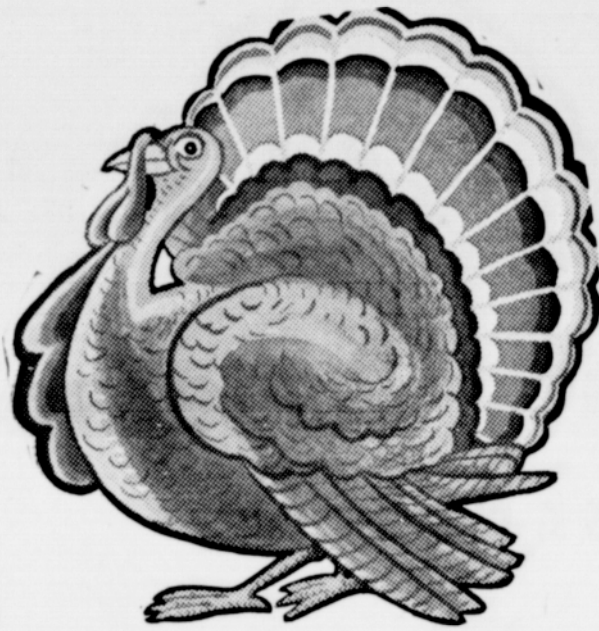
CHURCH OF JESUS CHRIST OF LATTER DAY SAINTS

Grange Hall
Priesthood Meeting 9:00 a.m.
Primary, Saturday 10:00 a.m.
Sunday School 10:30 a.m.
Sacrament Meeting 6:30 p.m.

SELMA YOUTH REPRESENTS ORE. AT FFA NATL CONV.

Ronald T. Gregg of Selma will represent Oregon at the National convention of Future Farmers of America, Kansas City, for the final round of cattle judging. Ronald will go under the auspices of the Chas. Pfizer & Co., Inc. He is a senior vocational agriculture student of the Illinois Valley high school and got much of his experience on a 60 acre farm, with his parents, Mr. and Mrs. Eugene Gregg, a brother and two sisters.

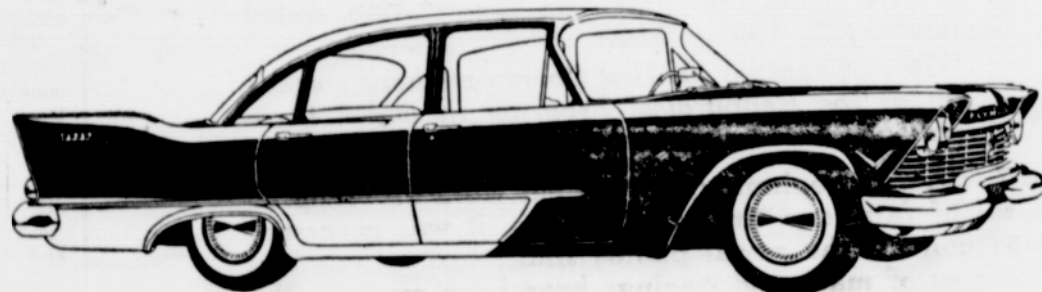
WIN
YOUR
THANKSGIVING
TURKEY
4
TO BE GIVEN AS PRIZES



Attend Our Annual
"NEW CAR PARTY"

• COFFEE • CAKE • BALLOONS for the Kids

SEE - DRIVE



Plymouth for 1957

SEE - DRIVE

1957 Dodge Lancer Hardtop Five Inches Lower



Don't Forget . . . Tues., OCT. 30

Our Cars Are Better, Our Service the Best

'C' Ed Dempsey

YOUR
DODGE - PLYMOUTH DEALER
Brookings, Oregon

ELLSWORTH

Works For
New Industry
New Payrolls
Thru Growth
Of Mining
Industry In
Oregon



HERE ARE THE FACTS:

Fact: Congressman Harris Ellsworth and the late Senator McNary in 1943 fought for and secured the location of the Bureau of Mines Laboratory at Albany, Oregon.

Fact: The purpose of this laboratory was and is to develop new methods of processing ores to produce metals.

Fact: The Albany Laboratory developed the first process for commercial production of zirconium metal vital to the success of the atomic energy program.

Fact: Today Albany is the world's second largest production center for highly strategic zirconium.

Fact: This laboratory developed a process for production of aluminum silicon from low grade aluminum ores using wood waste as a processing material.

Fact: Using this new process, the Apex Mfg. Co., a new industry, was started in Springfield.

Fact: This laboratory developed a process for production of titanium metal from titanium sponge.

Fact: The Oregon Metallurgical Corp. is completing a plant at Albany, only Northwest producer of titanium metal, strategically important in supersonic aircraft.

Fact: This laboratory developed a process for production of silico-manganese from low grade ores which may provide future industry in Oregon using local ores.

Fact: This laboratory assisted in developing a process for production of nickel from low grade ores.

Fact: Near Riddle, approaching full operation, is a \$30,000,000 mining and smelting plant using low grade nickel ores. This is the only quantity producer of strategic nickel in the United States.

Fact: Ellsworth has worked for appropriations and operation of stockpiling program for low grade chrome ores now being stockpiled at Grants Pass, Oregon.

SOUTHWESTERN OREGON NOW HAS A GOOD START IN USING ITS MINERAL RESOURCES. ELLSWORTH HAS AND WILL CONTINUE TO WORK FOR THE GROWTH OF MINING INDUSTRY IN THIS DISTRICT AND OREGON.

Re-elect ELLSWORTH

FOURTH CONGRESSIONAL DISTRICT OF OREGON

Pd. Pol. Adv., L. E. McClintock, Treas., Ellsworth for Congress Comm., 536 S. E. Main St., Roseburg, Oregon