

**ELEANOR TO SPEAK** — Eleanor Roosevelt has a speaking engagement at the Hedrick Memorial High School, Medford, on April 23rd. Tickets are \$5.00 copy and the report is an early sell-out is expected. Mrs. Roosevelt will speak at a Roosevelt Memorial Dinner.

In its announcement of another Interim meeting of the state legislative committee, the prospectus announces it will deal with "fringe area" problems. The meeting will be held in Coos Bay, Friday, April 6th, in the City Hall council chambers.

There is an extensive program outlined having to do with almost all phases of local interest and those unable to attend are urged to write to the committee.

**No surgery needed to reduce swelling of painful piles!**

In doctor's tests, amazing new Stainless Pazo instantly relieved piles' torture! Gave internal and external relief—without surgery! 6 medicated, proved ingredients relieve pain, itching instantly! Reduce swelling. Promote healing. You sit, walk in comfort! Only stainless pile remedy. Stainless Pazo® Suppositories or Ointment at druggists.

**Ellsworth Calls For Rogue Project**

The Rogue River Harbor project calls for navigation facilities at Gold Beach, Oregon, county seat of Curry County. This project was authorized under legislation which I introduced in the 83rd Congress. Since the date of the favorable recommendation by the Army Engineers, rapid strides has been made in Curry County generally. Despite handicaps, the people of that county have taken the initiative in moving ahead with the development of the excellent resources in the area.

Since 1950, the number of power consumers has doubled. The school census indicated nearly twice as many children in the schools. The Oregon State Board of Health finds Curry County the fastest growing county percentage-wise in the State of Oregon. It is entirely possible that in this regard it is the fastest growing county in the United States.

New forest inventories of private and public forest reserves show approximately 10 billion feet of timber as against a previous estimate of about 6 billion. The allowable annual cut has been increased from 20 million feet to 63 million feet. These and other developments materially change the cost-benefit ratio on which the project was based on 1.17 to 1 to 1.88 to 1 or an increase in benefits of nearly 50 percent.

The Evans Products Company recently completed a plant now handling 100,000 feet of logs daily and 70,000 additional capacity will be in operation later. The U. S. Plywood Company is beginning construction on a large plant which will have a capacity of 185 million square feet of plywood and lumber per year.

These facts not only serve to justify the wisdom of the Congress in authorizing the harbor project, but give emphasis to the need for the earliest possible start of construction of the project. Because of the lack of railroad facilities the real economic potential of Curry County is not going to be realized until water transportation through the harbor is available. Highway facilities are inadequate and at best involve costly long hauls.

The sound growth of the lumber industry, fishing industry and the mining industry depend on harbor development. I trust that the Committee will consider including in the pending bill the funds to get the planning and construction of this harbor under way.

Mr. Goodlin was a retired dairy rancher and carpenter, by trade. In his passing, Del Norte lost a good and respected citizen. He was a member of the Del Norte Pioneer Grange and Lake Earl Grange, and of the Smith River Methodist Church, in all of which groups he took an active part.

Surviving are his wife, Mrs. Ethel Goodlin; a daughter, Mrs. Gladys Lemkuhl, both of Smith River; a son, Milton of Honolulu; two brothers, John of Fort Dick and Dave, of Escalon, California; four grandchildren and a number of nieces and nephews.

Services were conducted, Saturday afternoon, from Smith River Methodist Church, with Rev. James Shelton, officiating. Soloist was Robert Bateman, who sang "No Night There" and "The Lord's Prayer." Organist was Mrs. Clyde Bigler.

Final services were conducted at graveside by the Lake Earl Grange. Interment was in the Smith River cemetery, family plot, under the direction of the Wier Mortuary Chapel.

**YOU'LL FIND IT IN THE WANT ADS**

**ALFAFLA DANGER**

Spread of the Alfalfa Aphid is causing serious alarm. From having first been found in the U.S., in central New Mexico, in February of 1954; it had, by late 1955 spread to all of that state and Arizona, Utah and Wyoming and all but a small corner of Texas.

Oklahoma, Kansas and California and had shown up in Nebraska, Idaho, and was on the borders of Oregon. Entomologists say it is impossible to predict either direction or force in which the aphid will spread and the chances are it will eventually infest the whole of the alfalfa growing areas.

The yellow-bodied insect, with black spots, breeds as many as 20 generations a year and moves by flying or attached to vehicles so quarantines are fruitless. Besides sucking the life out of the plant, it leaves behind it a honeydew in which a black fungus grows which becomes sooty-black and develops an odor which cattle will not tolerate.

By the end of 1955, according to reports, about 1 million out of 3 million acres in the alfalfa producing states had become seriously infected with the aphid.

**FLOOD AFTERMATH**

Several bulldozers have been employed in making fills and smoothing grounds at Klamath Glen, where the floods created much havoc last December.

Under direction of Del Norte county officials one of the principle jobs was properly burying the many animal carcasses which had been dumped into one of the depressions and improperly covered.

The entire water system of the lower valley is under the scrutiny of state officials, according to reports.

It is advised that those having patches of alfalfa should inspect their plantings, especially around their bases, every to or three days as there is a very rapid build-up of infection, once it is started. There appears to be but one method of destroying the evil and that is constant spraying of the whole neighborhood, especially from the air.

Some weird looking Easter lilies appeared in the recent seasonal ads. Looks like the association's bulbs don't bloom like the artists design them.

**ATTENTION... SAFE DRIVERS**  
**SAVE WITH SAFECO AUTO INSURANCE**

Now you can have better insurance and claims service—at folding-money-size savings! This is insurance for careful drivers only, reducing losses. Streamlined policy issuing methods are applied to cut costs. YOU get the benefits. Why go on paying high costs for old-fashioned insurance?



Call Now. No obligation.

**PETE J. LESMEISTER AGENCY**  
**Brookings**  
 Phone 3311

**CHETCO INN**



CLEAN & COMFORTABLE  
 ROOMS AVAILABLE  
 Weekly and Monthly Rates  
 Also Commercial Rates  
 EDNA SPARKS, Manager  
 Phone 2624

**GET THAT TROUT!**  
 ...then get yourself some fine bourbon...



Ask for **HERMITAGE** and tell the world you know great straight Kentucky bourbon!

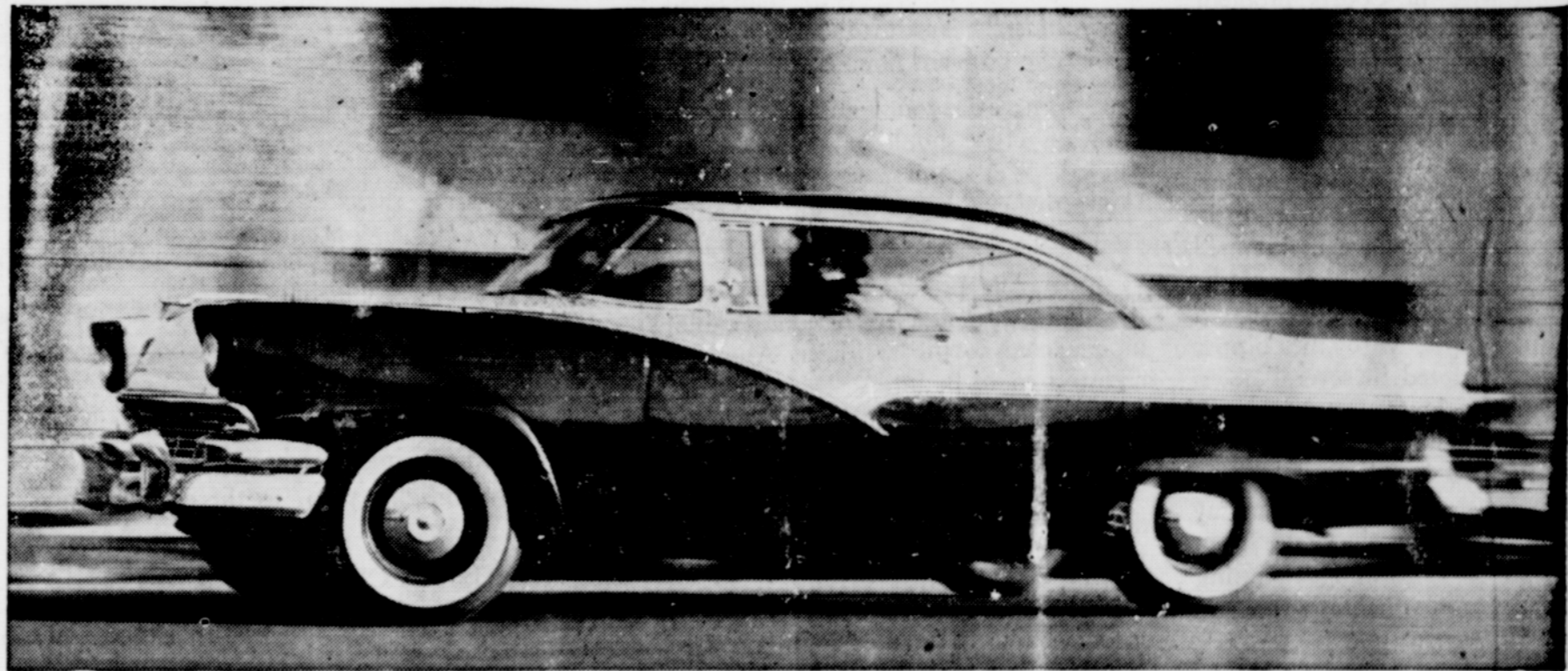


**6 years old**

\$280 PINT \$435 1.5 QT.

THE OLD HERMITAGE CO., DIVISION OF NATIONAL DISTILLERS PRODUCTS CORP., FRANKFORT, KENTUCKY. KENTUCKY STRAIGHT BOURBON WHISKEY, 86 PROOF.

**Its power packin' punch put it No.1 in V-8 sales**



And now Ford's new 225-h.p. engine gives you even hotter performance!

Today's biggest trend in automobiles is to the V-8 engine. That's because today's car buyer demands performance. And latest sales figures show that the Ford V-8 with its power-packin' punch is the largest-selling eight in the world! Official figures for 1955 show that 346,373 more people bought Ford V-8's than bought the two other low-priced eights combined!

But now Ford is setting an even hotter V-8 pace by making available the biggest engine ever offered in the low-price field. It's the Thunderbird Special V-8—and you can order it now in Fairlane and Station Wagon models. This engine has a displacement of 312 cubic inches and delivers 225 horsepower. It whisks you from "whoa" to GO as you've never gone before!

And Ford gives you that wonderfully long, low look of the Thunderbird in all of its '56 models. You get new Lifeguard Design, also, to help protect you in case of accident. Test Drive this great new '56 Ford... today!

**Ford wins all 3 awards**



You get more GO for your "dough" in a

**Ford V-8**

**DUNNING MOTORS**  
 BROOKINGS, OREGON