

# NOW is the Time to Purchase Your Fishing Supplies

## SEAL-DRI RUGGED RANGER NORTHERNER JACKET

Completely Reversible ONLY \$13.95  
 Jacket lined with new Ensolite to keep you warm and dry, 100% waterproof and will keep you afloat. COME IN AND SEE THEM NOW!  
 full 32" long, but weighs only 3 3/4 lbs.  
 Here's just the jacket for fishing, hunting and casual wear.

### Be Prepared When You Go Out After The Big Ones

- Penn Long Beach No. 60 SALT WATER REEL . . . . . \$10.50  
*Low Price . . . but really a good reel*
- Penn No. 350 M LEVELINE REEL . . . . . \$20.95
- CONOLAN 6'8" Medium Action Fiberglass BOAT ROD . . . . . \$8.95  
*Just the thing for Salmon Fishing*
- A Complete Assortment of MUSTAD TREBLE HOOKS  
 Sizes: 14 to 30  
 Complete Stock of Fishing Equipment  
 SPINNERS — Backmore, Jensen, Bonneville and Bear Valley Patterns
- CASTING RODS . . . . . From \$2.95 up
- ALL TYPES OF LINE —  
 SINKERS, SPREADERS, HOOKS
- ASHWAY & CORTLAND CAM-O-FLAGE NYLON LINE  
 We have this in 1200-yd spools and we will put it on your reel
- FIBERGLASS TACKLE BOXES . . . . . \$5.95 to \$12.95

### Exclusive Franchise — SALES & SERVICE —

Kiekhaefer  
 MERCURY OUTBOARD MOTORS  
 McCULLOCH CHAIN SAWS  
 LAWN BOY MOWERS

Here's just the thing for fishing and sports enthusiasts; a real CHARCOAL HEATER and GRILL for picnics, camping or in the boat. See this ideal HEATER at Morrie's, only \$9.95. Smoke — No Dust — Just Burn Charcoal Briquets

- CHARCOAL BRIQUETS in 5 to 25 Pound Bags
- COLEMAN CAMP STOVES
  - 1 Burner . . . . . \$13.95
  - 2 Burner Deluxe . . . . . \$17.95
  - 3 Burner Deluxe . . . . . \$23.75
- COLEMAN No. 500 STOVE . . . . . \$12.95  
 Cater Attachment . . . . . \$3.50
- COMPLETE REPAIR SERVICE on all Coleman Lamps, Lanterns, Stoves and Heaters
- Punker Alcohol MARINE STOVE . . . . . \$12.95  
 12" and corrosion proof, stainless steel, brass and galvanized construction. Burns alcohol, silent and odorless.

### SMITH MARINE Remote Controls

Throttle and Shift to fit  
 Mercuro, Johnson and Evinrude Motors  
 Prices Start at \$23.10

- 16' CLASSPAR AVALON OUTBOARD CRUISER \$1180.00  
 (FOB Tacoma Wash.)  
 Fiberglass construction, windshield, canvas top, upholstered seats
- Complete Stock WOOLSEY MARINE PAINTS  
 Topside, deck, anti-fouling, bottom paints,  
 Marine Varnish . . . . . Quarts \$2.80 Pints \$1.60
- Does Your Boat Leak? Get RUBBER SEALER 900  
 and a complete line of caulking materials.
- Keep that boat steady with a CANVAS SEA ANCHOR 2.25  
 3/8" Hard-Laid COTTON ANCHOR ROPE . . . . . 5 1/2¢ per ft.  
 7/16" Ship Brand Cable-Laid green treated  
 MANILA ROPE . . . . . 4¢ per ft.  
 6" x 8" size Plastic ANCHOR ROPE FLOAT . . . . . \$4.50  
 Orange and White
- Delightful Folding DECK CHAIRS . . . . . \$12.60  
 Lightweight aluminum and canvas. Just the thing  
 for comfortable boat fishing
- Large stock of Kedge and Navy type ANCHORS, 15 to 35 lbs.  
 Finest Quality APEX ASH OARS, 7' to 12' long. Large Stock

### COMPLETE STOCK OF FIBERGLASS CLOTH & RESIN

To put a new finish on that boat bottom. Seals waterproofs and makes a tough boat bottom.

- Coast Guard Approved LIFE JACKETS . . . . . \$5.60 to \$7.95  
 Kapok sealed in vinyl plastic
- Lightweight Marathon RAIN CLOTHES  
 Pressure welded for resistance to scuffing, snagging,  
 ripping and oxidation.
- Coat with Hood . . . . . \$16.25
- Pants . . . . . \$8.40 to \$9.40
- HI-LINE CALKED SHOES . . . . . \$39.50  
 Spring heel and regular. Finest quality, hand-made.  
 Guaranteed for comfort and durability.
- Converse Top Quality HIP BOOTS
  - Men's . . . . . \$14.95
  - Women's . . . . . \$13.95
- Converse Flexite HIP BOOTS . . . . . \$11.95
- Servus Insulated 3-EYELET PAC
  - Men's . . . . . \$12.05
  - Ladies' . . . . . \$11.25

**MORRIE'S** OUTDOOR STORE  
 PHONE Cherry 7-4893 GOLD BEACH, OREGON

### RESOLUTION NO. 11

BE IT HEREBY RESOLVED BY THE COUNCIL OF BROOKINGS, OREGON:

Whereas, pursuant to Resolution No. 11, adopted by the Council on Feb. 28, 1956, the City Engineer has filed with the City Recorder his report as the same has been required to be submitted to the Council by virtue of said Resolution No. 11 and

Whereas, the City Recorder has prepared her notice, as the same is required by such officer to be prepared in Ordinance No. 48, Section 3, this said notice in form and content being as follows:

NOTICE IS HEREBY GIVEN:

That the report of the City Engineer, as provided and required to be submitted in Resolution No. 11 adopted February 28th, 1956, covering and establishing a Special Assessment District within the corporate limits of Brookings, Oregon, known as Area No. 2 Sanitary Sewer Project, has been filed in the office of the Recorder as of March 27th, 1956, and is available for examination in said Recorder's office. The estimated probable cost of such proposed improvements is \$44,693.75. A brief statement of the area proposed to be assessed for such improvement is as follows, to-wit:

A TRACT OF LAND IN SECTIONS 5 and 8, Township 41 S, Range 13 West, W.M., LOCATED WITHIN THE CORPORATE LIMITS OF BROOKINGS, OREGON, CURRY COUNTY AND MORE PARTICULARLY DESCRIBED AS FOLLOWS:

Beginning at a point on the Westerly line at Brookings Land & Townsite Tax Lot No. 23A, said point being North 1,211.9 feet and 1,015.1 feet East from the Southwest corner of said Section 5; said point being 140.0 feet South, when measured at right angles from, the South line at Del Norte Lane;

Thence: West a distance of 204 feet, more or less, to a point 140.0 feet, when measured at right angles from the West line of Oak Street extended;

Thence: North 21° 50' West parallel to the West line of Oak Street, a distance of 294 feet, more or less, to a point on the South line of Hemlock Street;

Thence: North 68 deg. 10 min. East along said South line to the Northwest corner of Lot 6 of the Woodland Park Addition;

Thence: South 21 deg. 50 min.

East along the Westerly line of said Lot 6, 90.0 feet to the Northwest corner of Lot 7, Woodland Park Addition;

Thence: North 68 deg. 10 min. East 330.0 feet to the Westerly line on alley;

Thence: South 21 deg. 50 min. East 140.0 feet along said alley line to the North line extended of Lot 9;

Thence: North 68 deg. 10 min. East 134.0 feet along said North line to the West line of Alder Street;

Thence: South 21 deg. 50 min. East 145.84 feet to the North line of Del Norte Lane;

Thence: East along West line a distance of 135 feet, more or less, to a point on the North line of Del Norte Lane and the intersection of the East line extended of Lot 6, Block 1, Coast View Subdivision;

Thence: South along said line extended a distance of 182.50 feet to the Southeast corner of said Lot 6;

Thence: East along the North lines of Lots 8, 9, 10 and 11, Block 1 and parallel to the Del Norte Lane, a distance of 320.0 feet to the West line of Lot 13 said Block 1;

Thence: North along said West line of Lot 13 in said Block 1, a distance of 32.50 feet, to the northwest corner of said Lot 13;

Thence: East along north line of said Lot 13, extended a distance of 179.32 feet to the East line of Del Norte Lane;

Thence: North 19° 30' West along the East line of Del Norte Lane 158.99 feet to the North line of Del Norte Lane and the initial point of Woodland Park Addition;

Thence: East along the North line of Del Norte Lane extended 148.15 feet;

Thence: South 19° 30' East 424.21 feet to the North line of Johnson Lane, Tween Points Tract.

Thence: West on said North line, a distance of 18.2 feet to the East line of Lot 7 of Tween Point Subdivision;

Thence: South 19° 30' East along the East line of Lot 7, 6, 5, 4, and 3 of said subdivision parallel to Del Norte Lane, a distance of 328.87 feet to the North line of Tax Lot 12;

Thence: East along said North Line, a distance of 18.08 feet to the East line of Tax Lot 12-2;

Thence: South 19° 30' East along the East line of said Tax Lot 12-2, a distance of 88.21 feet to the Southeast corner of

Tax Lot 12-2;

Thence: West along South line of said Tax Lot 12-2, a distance of 10.0 feet;

Thence: South 19° 30' West, a distance of 165.75 feet to the North line of Tax Lot 12-A;

Thence: South 84° 52' East along the North line of said Tax Lot 12-A a distance of 10.10 feet;

Thence: South 19° 30' East, a distance of 640 feet, more or less, to the South line of Tax Lot 10-C

Thence: Along said South line of Tax Lot 10-C, a distance of 147.36 feet to the East line of Del Norte Lane;

Thence: South 19° 30' East 52.91 feet to the intersection of the South line of Memory Lane with the East line of Del Norte Lane;

Thence: East along the South line of Memory Lane a distance of 68 feet, more or less, to the East line of Tax Lot 9-E;

Thence: South 8° 10' West along said East line of Tax Lot 9-E, a distance of 141.42 feet;

Thence: West 140.0 feet from and parallel to Memory Lane, a distance of 1,994.71 feet, more or less, to the East line of Lot 9 of the Twoby Tract;

Thence: North along said East line 17.44 feet to the center of a Utility Strip in said Twoby Tract;

Thence: long said center line West 508.42 feet to the East line of Tan Bark Road;

Thence: Along said East line North 388.5 feet to the Northwest corner of Lot 25 of the Twoby Tract;

Thence: Following the North line extended of said Lot 25, East 128 feet, more or less, to the Easterly line of Memory Lane;

Thence: South along said Easterly line to a point which is 140.0 feet from the North line extended of the East-West portion of Del Norte Lane;

Thence: Parallel to Memory Lane, a distance of 954 feet, more or less, to a point which is 140.0 feet West of the West line of Alder Street extended;

Thence: Parallel to said Alder Street, a distance of 1,087.95 feet;

Thence: West a distance of 124 feet, more or less, to the West line of Tax Lot 23-A;

Thence: Northwesterly along said West line 126 feet, more or less, to the place of beginning;

All persons interested in the hereinabove set forth and mentioned Special Assessment District are hereby notified to ap-

pear before the Council of the City of Brookings, at the hour of 8 o'clock, P.M., on April 10, in the City Hall of said City, and present their objections, if

they have any, to the aforesaid improvement.  
 Mae D. Smith,  
 City Recorder of  
 Brookings, Oregon



From where I sit... by Joe Marsh

### Happy Ending With A "Familiar Ring"

Buck Howell says he and his Missus had quite a time at the Stockman's Convention in Chicago. But for a while they had a "breakdown in communications." The phone bell in their hotel room was pitched so low they often didn't answer their calls. "Never knew if it was for us or not," Buck said, "always sounded far off—like it was ringing in someone else's room."

Finally, Buck hit on the obvious solution. He just made a deal with the hotel switchboard operator that whenever she called them she'd use two long rings and a short—their party-line signal back home.

From where I sit, our own familiar routines tend to make other ways of doing things seem strange. That's natural. For instance, if you've always had ice water with your meals, you might think it's odd that lots of us prefer a bottle of beer at dinner-time. I say you've a right to your own customs . . . but don't call mine wrong.

Joe Marsh

Copyright, 1956, United States Brewers Foundation

## ATTENTION... SAFE DRIVERS

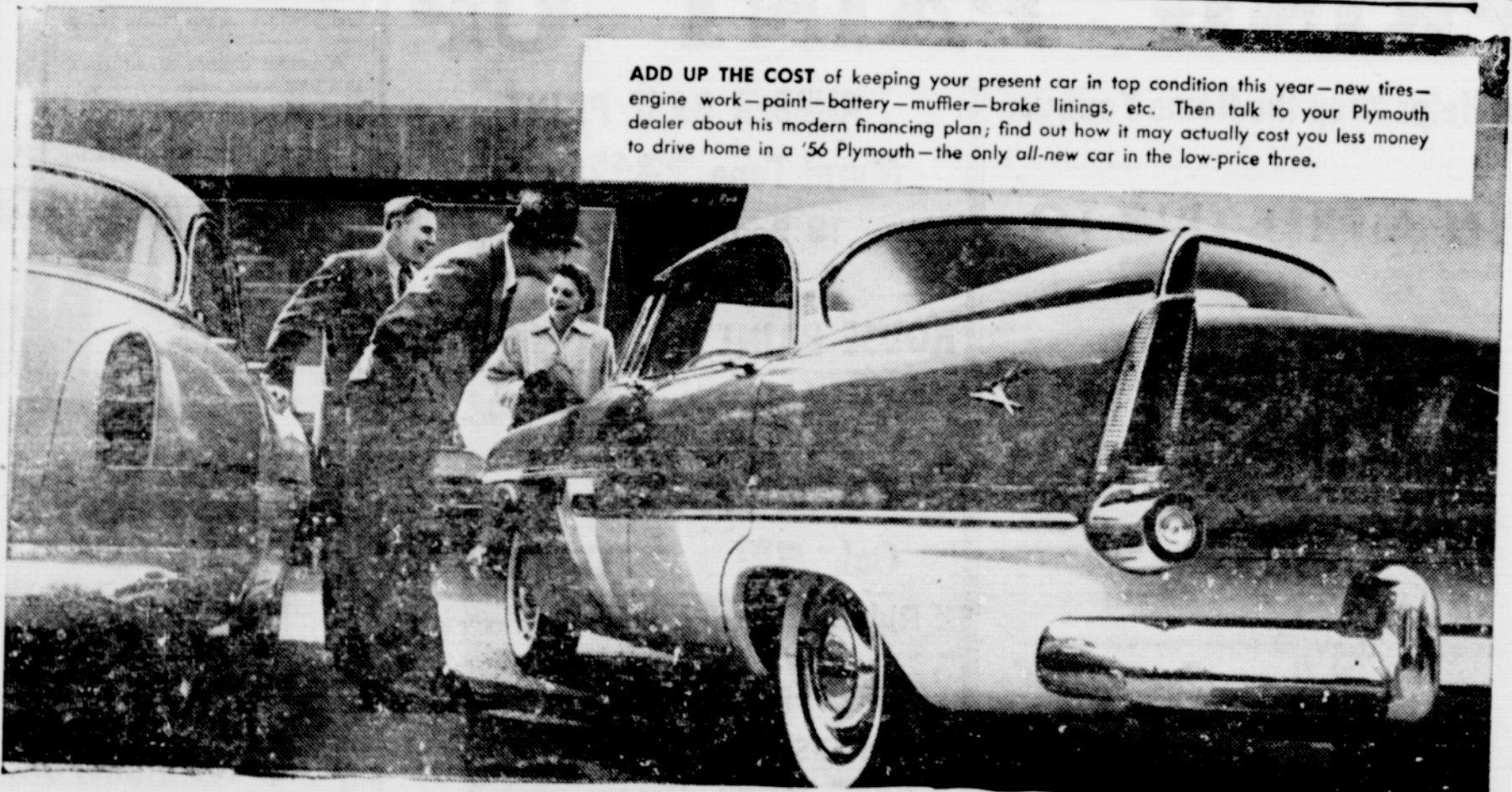
SAVE WITH SAFECO AUTO INSURANCE

Now you can have better insurance and claims service—at folding-money-size savings! This is insurance for careful drivers only, reducing losses. Streamlined policy issuing methods are applied to cut costs. YOU get the benefits. Why go on paying high costs for old-fashioned insurance?



Call Now. No obligation.

**PETE J. LESMEISTER AGENCY**  
 Phone 3311 Brookings



ADD UP THE COST of keeping your present car in top condition this year—new tires—engine work—paint—battery—muffler—brake linings, etc. Then talk to your Plymouth dealer about his modern financing plan; find out how it may actually cost you less money to drive home in a '56 Plymouth—the only all-new car in the low-price three.

## Let's trade! Your present car on a big, all-new, jet-styled Plymouth!

You'll own the only low-price car that's really new. Plymouth is all new—design of the future today. But the other two low-price cars? Still about the same as last year and the year before!

You'll own the biggest car in Plymouth's field. You'd have to pay hundreds of dollars more to match Plymouth's generous trunk space, over-all length, and interior roominess.

You'll own the only low-price car with positive, mechanical Push-Button Driving. Greatest ad-

vance in a decade, and only Plymouth has it in its field! Touch a button . . . and you're off. Fool-proof! At left, safely out of children's reach.

You'll own the top performer of the low-price three. Plymouth is fastest from 0 to 30 and 0 to 60 m.p.h., as independent tests show! Just try that

new Hy-Fire V-8—with up to 200 horsepower! So—bring your present car in now and see how much we'll allow you on a magnificent all-new '56 Plymouth. We'll surprise you! And be sure to ask about our modern financing plan—makes owning a Plymouth easier than ever!

## PLYMOUTH COSTS LESS

From the day you buy it . . . through all the years you own it . . . you'll spend less on a Plymouth. That's one reason more Plymouths are used on taxis than all other cars combined.

## C. "ED" DEMPSEY

Your "Dodge-Plymouth Dealer"  
 BROOKINGS, OREGON