

# CHURCH NEWS

## ASSEMBLY OF GOD CHURCH

Come and Worship With Us  
In Each Service  
Corner of Oak and Pacific  
P. O. Box 816 — Phone 3453  
Sunday School...9:45-11:00 a.m.  
Sunday Worship...11:00 a.m.  
Young People...6:30-7:30 p.m.  
Evangelistic Service...7:30 p.m.  
Tuesday Evening...7:30 p.m.  
Your Neighbor and Pastor  
Rev. Willard J. Spencer

## SEVENTH DAY ADVENTIST CHURCH

Elder Melvin Tompkins, Pastor  
Sabbath School, Sat...9:30 a.m.  
Preaching Service...11:00 a.m.  
Prayer meeting, Wed...8:00 p.m.  
Choir Rehearsal, Fri...7:00 p.m.  
Dereas Meeting, Tue...10:00 a.m.

ST. TIMOTHY'S CHURCH  
EPISCOPAL  
Fir St. and Azalea Park Drive  
The Rev. John R. Shideier, Vicar

Phone 3275  
— Sundays —  
Morning Worship...9:00 a.m.  
1st, 3rd and 5th Sundays,  
The Holy Eucharist  
2nd and 4th Sunday mornings,  
Prayer  
Thursday,  
The Holy Eucharist...10:00 a.m.  
— 2nd Wednesday —  
St. Timothy's Guild...7:30 p.m.  
— 3rd Thursday —  
Altar Guild...8:00 p.m.

CHURCH OF JESUS CHRIST  
OF LATTER DAY SAINTS  
(Grange Hall)  
Priesthood Meeting...9:00 a.m.  
Sunday School...10:30 a.m.  
Sacrament Meeting...6:30 p.m.  
Primary, Saturday...10:00 a.m.  
The Relief Society meets every  
Tuesday in a private home.

BROOKINGS  
PRESBYTERIAN CHURCH  
V.F.W. Hall  
Pioneer Road and Pacific Ave.  
Henry M. Ostermeier, Minister  
Sunday School...9:45 a.m.

Morning Worship...11:00 a.m.  
Westminster Fellow-  
ship...6:00 p.m.  
Church Session 2nd Monday  
each month at 7:30 p.m.  
Women's Association 2nd Wed-  
nesday each month at 7:30 p.m.  
Afternoon Circle 4th Wednes-  
day each month at 1:45 p.m.  
Choir Rehearsal each Satur-  
day at 1:00 p.m.

LUTHERAN CHURCH  
Services are held at the Seventh  
Day Adventist Church Brookings  
Harold Mitchell, Pastor  
Meridan and Cooper Streets  
Crescent City  
Morning Service...8:30 a.m.  
Sunday School...9:30 a.m.  
Everyone is invited.  
Tune in on the Lutheran Hour  
every Sunday, KIEM, 5:30 p.m.

BROOKINGS BIBLE CHURCH  
303 N. Hazel Street  
Rev. E. F. McClain, Pastor  
Sunday School...9:45 a.m.  
Morning Worship...11:00 a.m.  
Youth Meetings...6:30 p.m.  
Bible Study and Prayer Meeting  
Wednesday...7:30 p.m.  
We Preach The Bible As It Is —  
For Men As They Are.

BAPTIST  
COMMUNITY CHURCH  
Pacific Avenue  
Rev. Walter Sadler, Pastor  
Sunday School...9:45 a.m.  
Morning Worship...11:00 a.m.  
Youth Fellowship...6:30 p.m.  
Evening Worship...7:30 p.m.  
Prayer Meeting, Wed...7:30 p.m.  
Choir rehearsal, Thur...8:00 p.m.  
Cherub and Junior Choir  
Rehearsal, Saturday...10 a.m.  
Crusaders, Saturday...11 a.m.  
Women's Missionary Meeting:  
Third Thursday in the Month  
If you have no church home  
we invite you to worship with us.

CHRISTIAN SCIENCE  
CHURCH  
Corner of Pine and Alder,  
across from the Greenhouse  
Sunday School, from 9:45 to  
10:30 a.m. Children and Young  
People up to the age of 20 are  
all welcome.  
Services Sunday at 11:00 a.m.  
Testimonial meeting on the  
1st and 3rd Wednesdays at 8 p.m.  
The Reading Room in the  
Church is open on Wednesdays  
from 2:30 to 4:30.  
All are cordially invited.

STAR OF THE SEA  
CATHOLIC CHURCH  
Oak and Redwood Sts.  
Father Emil H. Kies  
Sunday Mass Schedule — First  
Sunday of month, sung High  
Mass, 11:00 a.m.; all other  
Sundays, 8:00 a.m.  
Daily (except Wednesday) Mass  
Schedule during Lent—7:00 p.m.  
followed on Tuesdays by in-  
struction and question period,  
on Thursdays by Benediction  
with the Blessed Sacrament,  
on Fridays by Stations of the  
Cross.  
Confessions before all Masses  
and on Saturday evenings,  
from 7:30 to 8:30 p.m.  
Catechetical Instructions — for  
grade school pupils on Satur-  
day mornings at 10:00 a.m.;  
for high school students after  
devotions Thursday evening in  
Church.  
Discussion Club — for Adults  
after devotions Thursday even-  
ings in parish hall.

ATTENTION TEEN-AGERS!  
Anent the often heard lament  
there is nothing for the younger  
set to do, two fifteen year olds  
recently made sports news—both  
girls. One won the Olympic skat-  
ing championship and the other  
broke the world's record 100  
yard swimming time.

TROUT RAISING —  
In this part of the country, we  
are especially well set for grow-  
ing our own trout, which may be  
taken any day of the year if one  
owns their own source. Accord-  
ing to a release from OSC, Or-  
ville Cutsforth, in Morrow coun-  
ty, built himself a two-thirds  
acre pond and planted in it 200  
five-inch rainbows. That fall he  
was pulling them out, averaging  
a foot in length, and after win-  
tering, the fish had taken on  
another couple of inches and  
were nice and fat. He should  
have planted twice the number  
of fish he did.

Data on proper construction  
of your own trout factory may  
be had from the county agent.

Men's Club — meets regularly on  
last Friday of month at 8 p.m.  
in parish hall.

Altar Society — meets regularly  
on first Tuesday of the month  
at 8:00 p.m. in parish hall.

## MARTINS ARRIVE AGAIN —

Again, as has happened many  
times in previous years, the pur-  
ple martins have been seen about  
the mouth of the Chetco before  
their much publicized appearance  
at San Juan Capistrano. Two of  
them were seen-and-heard over  
the greenhouse property, Monday  
noon.

THIEMS VISIT —  
Mr. and Mrs. John Thiems, of  
Eureka, were up last Sunday.  
LaVonne (Wagner) wanted to  
see that new McCourt youngster.  
Mrs. Thiems teaches school in  
the Bay town while her husband  
is still with Paul Davis, at his  
International Agency.

This writer knows of one cen-  
tral Curry pond, which over the  
years, could always be counted  
on for a milk-pan full of fish, any  
day of the year.

## CROP REGENERATION —

Less than 30 percent of the  
U. S. Cropland is now planted  
to varieties that existed in 1935,  
according to the Wall Street  
JOURNAL. Plant breeders have  
developed seeds to hike yield,  
fight disease, and compete with

synthetics. About 96 percent of  
the cotton now being grown was  
unknown twenty years ago and  
average production of all crops,  
per acre, has increased 40 per-  
cent since 1935. One notable  
change has come with the devel-  
opment of hybridized corn.



GOLD BEACH — VET'S HALL  
SATURDAY, MARCH 17th  
SMITH RIVER — COMMUNITY HALL  
SATURDAY, MARCH 24th

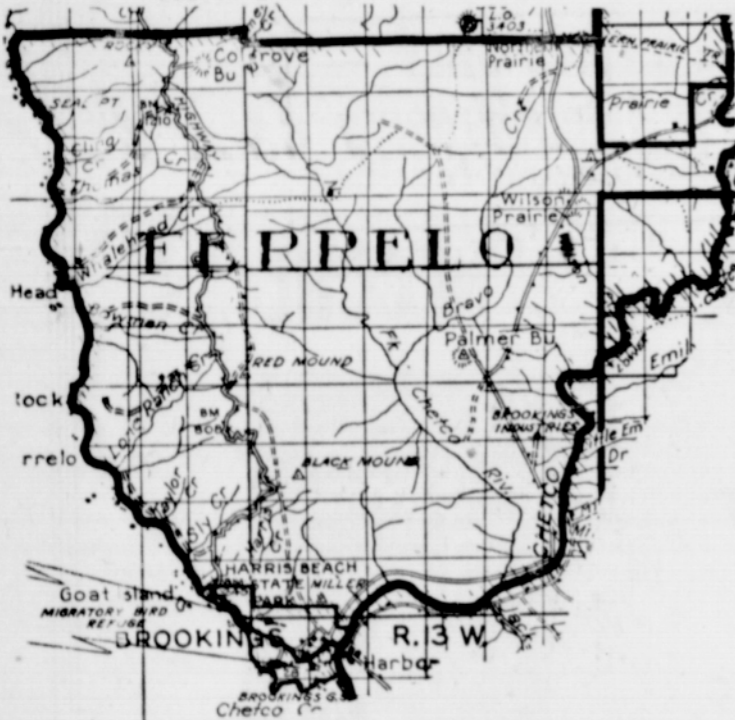
## VOTERS NOTICE

The City of Brookings has been divided in two  
Precincts with Hwy 101 as the dividing line  
as follows:

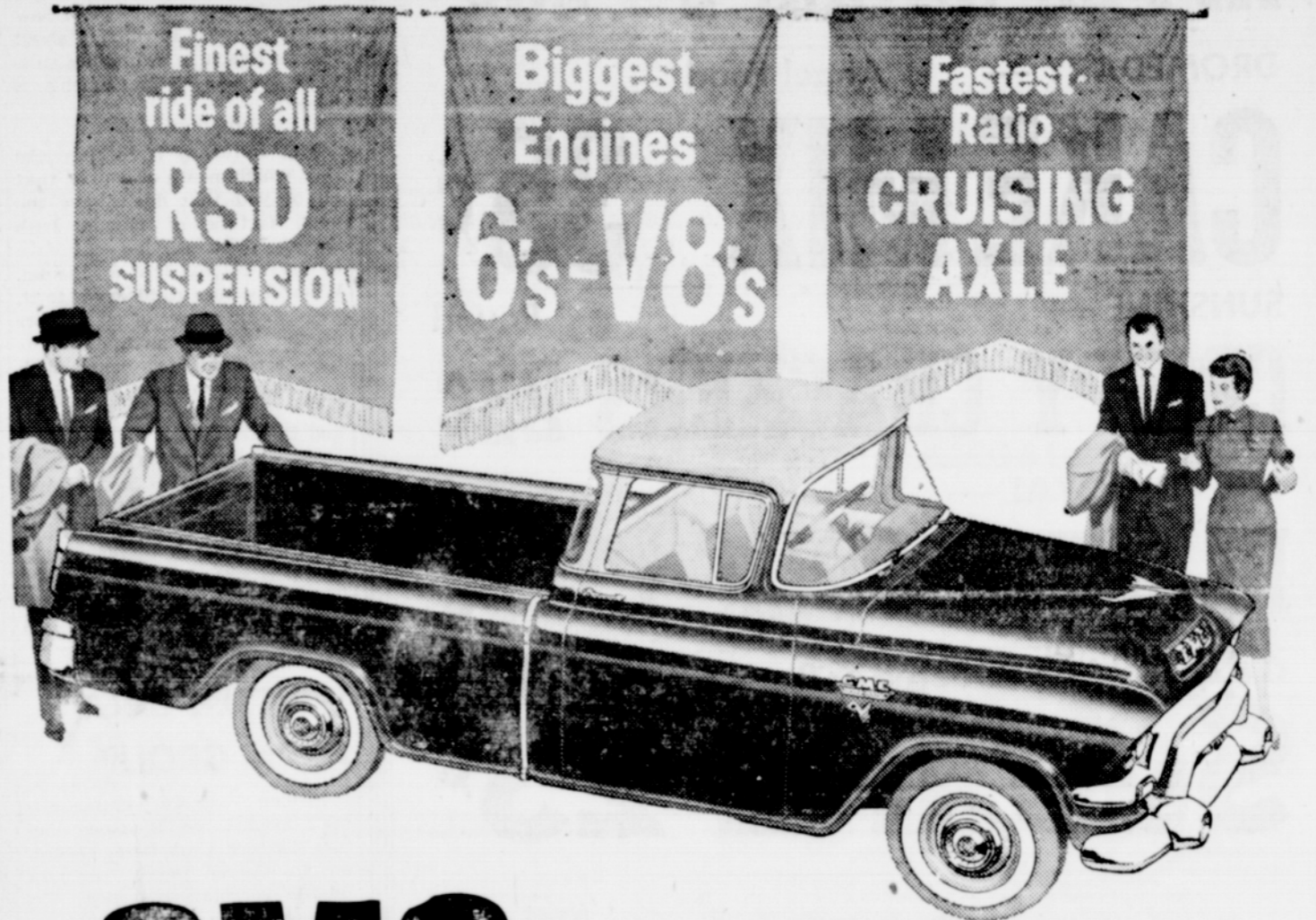
BROOKINGS PRECINCT NO. 1 —  
All residents on the oceanside of Highway 101 and between  
the Chetco River and the city limit boundary on the North  
of Brookings.

BROOKINGS PRECINCT NO. 2 —  
All residents on the easterly side of Highway 101 and be-  
tween the Chetco River and city limit boundary on the  
North of Brookings.

FERRELO PRECINCT —  
All residents not residing within the city limits of Brookings  
and north of the Chetco River. (See Map)



The registered voters residing in these Precincts should  
notify Oleta A. Walker, County Clerk, Gold Beach at once  
stating their precinct, so their names will be listed in  
the proper poll book.  
If not registered, you can register with Mrs. Mae Smith,  
City Recorder of Brookings and official Registrar for these  
Precincts or at the County Clerk's office in Gold Beach.



# GMC brings you the most impressive improvements of all 1956 trucks

Now we can show you these great new GMC's  
that are further than ever ahead of all others.  
Their advances not only clinch power supremacy  
—but reach into fields still unexplored by other  
truck-makers.

For example, GMC's Road Shock Damper  
Suspension\*—plus a unique new stabilizer—  
produces in half-ton models a ride comparable to the  
finest passenger car.

An optional new fast-ratio cruising axle in light-  
duty GMC's gives you an overdrive's pace and  
economy without its cost.

Sharply increased engine displacement in both sixes  
and V8's gives you a power family unsurpassed in

the light-duty field. Specifically, we offer 14.4%  
GREATER displacement on 6-cylinder models,  
16.2% on V8's than our nearest competitors. And  
GMC V8's, mind you, match the shortest stroke  
ratios in the truck industry.

Styling is well into the future—panoramic wind-  
shield to sand-tight tail gate. Tubeless tires, of  
course. And a 12-volt electrical system is standard.  
These are some of the strides presented in new  
1956 Blue Chip trucks we now  
have on view. The values are  
even more notable. Come in  
and get the facts!

\*Standard on Suburban; optional at  
slight extra cost on other 1/2-ton models



Your key to Blue Chip value

See us, too, for Triple-Checked used trucks

## BUFFINGTON MOTORS

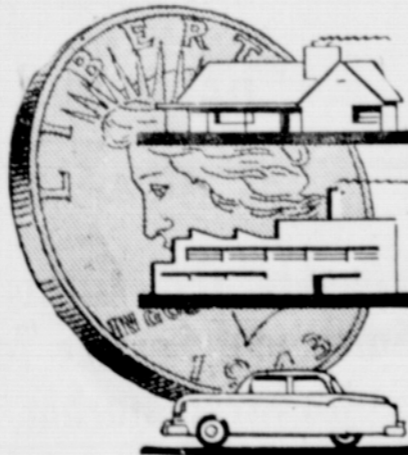
185 SOUTH ELLENSBURG — GOLD BEACH OREGON

## LET US HELP YOU SECURE

The Greatest Possible  
VALUE for  
YOUR INSURANCE  
DOLLAR

On home, business, automobile...  
every owner has his own particular  
insurance requirements. Helping  
our policyholders arrange proper,  
adequate coverage helps them to get  
the most in protection and insurance  
service for their insurance dollars.

GIVE US A CALL—OR  
BETTER YET—COME IN



ARTHUR KNOX  
Insurance Agency  
NORTHGATE BLDG. — PHONE 2211

Representing  
NORTHWESTERN  
MUTUAL INSURANCE COMPANY  
FIRE CASUALTY AUTO  
HOME OFFICE — SEATTLE — WASHINGTON

WE ALSO REPRESENT NORTHWESTERN MUTUAL LIFE INSURANCE CO.