

## With The Churches

**BROOKINGS BIBLE**  
South Hazel street near Del Norte  
Rev. Ed McClain, Minister  
Sunday school, 9:45 a. m.  
Morning worship, 11 a. m.  
Evening service, 7:45 p. m.

**BAPTIST COMMUNITY**  
Rev. Walter Sadler, Pastor  
Sunday school, 9:45 a. m.  
Church services at 11 a. m. and  
7:30 p. m.  
Young People, Sunday at 6:30  
Midweek services, Wednesday,  
8 p. m.  
Choir rehearsal, Thursday at  
8 p. m.

**CHURCH OF JESUS CHRIST  
LATTER DAY SAINTS**  
Grange Hall  
Priesthood meeting, 9 a. m.  
Sunday.  
Sunday school, 10:00 a. m.  
The Ladies Relief Society meets  
every Tuesday in private homes.  
The Reorganized Church of  
Jesus Christ of Latter Day  
Saints

**CHRISTIAN SCIENCE CHURCH**  
Sunday school from 9:45 to  
10:30 a. m. Children and young  
people up to age of 20 are wel-  
come.  
Services Sunday at 11 a. m.  
Testimonial meetings — First  
and third Wednesdays, 8 o'clock.  
Reading room in church open  
Wednesdays—2:30 to 4:30.  
Corner Pine and Alder, across  
from the Greenhouse.  
All are cordially invited.

**STAR OF THE SEA CATHOLIC**  
Oak and Redwood Sts.  
Phone 2423  
Father Emil Kies, Pastor  
Sacrifice of the Mass, first Sun-  
days 11:00 a. m., other Sundays  
and weekdays except Wednesdays,  
8:00 a. m.  
Confessions before all Masses  
and on Saturdays from 7:30 p.  
m. to 8:30 p. m., except on the  
first Saturday.  
Altar boy practice 6:30 p. m.  
Tuesdays.  
Adult choir rehearsal 7:30 p.  
m. Fridays.  
Children, 10:00 a. m. Saturdays.

## UPHOLSTERING AUTO — FURNITURE

Truck and Car Cushion Repairs

**ROY H. BROWN**

PHONE 2244

HILLSIDE ST.

## Fig Bar 'Logs' For February Fun!



What if these were sold by "Honest Abe" didn't come from a fig tree — and George Washington's hatchet wasn't aimed at a fig tree, either? To delight all the youngsters in your home, here's a "just pretend" parrotie dessert for February, made to look like a real log, that did come from a fig tree! It's called a Fig Bar "Log" and it's made, complete with hatchet, from rich square fig bars that are fastened together with a delicious frosting mixture of cream cheese, grated chocolate, lemon juice, sugar, and milk. Sliced almonds supply the realistic bark for the outside. Make a supply of these flavorful new treats or party fun on February 12; chances are, you'll find the youngsters calling for "doubles" on February 22. Here's the easy no-bake way to make them:

**Fig Bar 'Logs'**  
1 8-oz. package cream cheese  
1 tablespoon lemon juice  
1/4 cup sifted confectioners' sugar  
Dash of salt  
1 cup thinly sliced unblanched almonds.  
In a bowl, combine cream cheese, lemon juice, sugar, salt, grated chocolate and enough milk (about 1 tablespoon) to make of spreading consistency. For each log, spread sides of five fig bars with cream cheese mixture. Press bars together; coat edges and top of log with more of the mixture. Sprinkle with almond slices to make bark. For each hatchet blade, use one fig bar, trimmed at slight angle to resemble real blade. Insert wood "handle" through narrow end to form handle, and rest hatchet on one end of log, fastening it in place with a con- corded toothpick. Trim handle with narrow bow of red ribbon. Makes 6 logs and hatchets.

## READY MIX CONCRETE

(Our sand and gravel is washed, screened and weighed to give full measure and proper proportions of aggregate, to insure quality)

Crushed Gravel River Run Sand and Gravel  
Rock Fill Material Clay Fill  
Black Top Soil River Silt  
Clam Shell Soil Concrete Pipe & Ditching

NO JOB TOO SMALL

Brookings RED-E-MIX Concrete Co.

Teen Age Religious Instruction  
Tuesday 7:30 a. m.  
Religious instruction for  
children 10:00 a. m. Saturday.

**ASSEMBLY OF GOD**  
Oak and Pacific  
Rev. W. J. Spencer  
One of the friendliest churches  
in Brookings.  
Sunday school, 9:45 a. m. to  
10:45 a. m.  
Morning worship, 11 a. m.  
We preach Jesus Christ,  
friend to the friendless.  
Evening service, 7:30, evangel-  
istic.  
We invite you to come and be  
part of our service.

**PRESBYTERIAN CHURCH**  
9:45 Sunday School.  
11:00 a. m. Worship Service.  
VFW Hall  
Pioneer Road and Pacific Ave.  
Henry M. Ostermeier, Minister  
Brookings-Crescent City group.  
Elder Joseph Elkins, Pastor  
Meets Crescent City City Hall  
Sunday School 10:00 every  
Sunday.  
Worship service 11:00 first and  
third Sunday.  
Visitors Welcome.

**LUTHERAN**  
Services are held at Seventh-  
Day Adventist church  
Morning service, 8:30.  
Sunday school, 9:30 a. m.  
Everyone is invited.  
Rev. Harry F. Miller, pastor  
754 I street, Crescent City, Calif.  
Phone 2424, Crescent City.  
Tune in Lutheran Hour every  
Sunday 1 p. m., KCRE, Crescent  
City.

**DEL NORTE  
CHURCH OF CHRIST**  
(Non-Instrumental Music)  
Meets 11 a. m. Sundays at the  
Joe Brummett residence, 4 miles  
north on Elk Valley road. Phone  
1293, Crescent City.

**SEVENTH-DAY ADVENTIST**  
Elder Calvin Hartnell, Pastor  
9:30 a. m. Sabbath School, Sat-  
urday.  
11:00 a. m. Church Service  
7:00 p. m. Wednesday, prayer  
meeting  
7:30 p. m. Sunday, Evangelis-  
tic service.  
Elder Melvin Tomkins, Pastor  
9:30 a. m. Sabbath school Sat-  
urday.  
11:00 a. m. Preaching service  
7:00 p. m. Wednesday Prayer  
meeting  
You are invited to attend the  
services.

**ST. TIMOTHY'S EPISCOPAL  
CHURCH**  
Azalea Park Drive and Fir Street  
The Rev. John R. Shidler  
8:30 a. m. Holy Communion  
(Second and fourth Sundays only)  
9:15 a. m. Family Service and

**CHRISTIAN SCIENCE CHURCH**  
That the bewilderment and con-  
fusion of our times can be met  
through prayer to God, the Auth-  
or of all intelligent action, was the  
theme of a Lesson-Sermon en-  
titled "Mind," which will be read  
in all Christian Science churches  
on February 20. "If any of you  
lack wisdom, let him ask of God,  
that giveth to all men liberally,  
and upbraideth not; and it shall  
be given him" (James 1:5) was  
the Golden Text. The attention of  
the congregation was directed to  
the world situation by the follow-  
ing reference from "Science and  
Health with Key to the Scrip-  
tures" by Mary Baker Eddy (p. 467). "It should be thoroughly  
understood that all men have one  
mind, one God and Father, one  
Life, Truth, and Love. Mankind  
will become perfect in proportion  
as this fact becomes apparent,  
war will cease and the true  
brotherhood of man will be  
established."

Progress is the activity of to-  
day and the assurance of to-mor-  
row.

If all our years were holidays,  
sport would be more irksome  
than work.

## Motor Vehicles Hit 774,000 Mark

Registered motor vehicles in  
Oregon topped three-fourths of a  
million last year, according to an  
estimate released Thursday by  
Secretary of State Earl T. Newby.

Total number of vehicles re-  
gistered during the year was se-  
tentatively at 774,801, up 1.6 per  
cent from 762,533 in 1953.  
Passenger car registrations  
totalled 681,741, a climb of 2.7 per  
cent over the preceding year. At  
the same time, 5,580 fewer trucks  
and 185 fewer buses had been re-  
gistered throughout 1954.  
Newby said the 1954 registra-  
tion information is based on ac-  
tual figures through September  
and estimated for the remaining  
months, but that the totals are  
considered very close to what the  
final count will be when auditing  
is completed.  
The drivers license division re-  
ported 58,169 applicants were is-  
sued original Oregon operator's  
permits last year and 362,263 li-  
censes were renewed.

## Thousands Visit State Coast Parks

Final attendance estimates for  
Oregon State Parks released this  
week by C. H. Armstrong, State  
Parks Superintendent for the Ore-  
gon State Highway Commission  
showed that a record was reached  
during 1954.

An estimated 6,065,000 persons  
visited the state's 156 parks dur-  
ing the past year compared to the  
previous record attendance in  
1952 of 5,390,000.

A year-end report of progress by  
the State Parks Division of the  
Oregon State Highway Depart-  
ment showed that Yaquina Bay  
State Park at Newport led all  
other parks in usage with an at-  
tendance of 538,653. This was  
over twice the 237,369 persons  
who visited Sunset Bay State  
Park, also on the coast near Coos  
Bay which ranked second in at-  
tendance. Willowa Lake State  
Park was third with 202,599 vis-  
itors, though its location in North-  
eastern Oregon is far removed  
from the large population cen-  
ters.

## No Reactors In Curry County T. B. Test Program

Last year 798 cattle were tested  
for tuberculosis in 30 Curry coun-  
ty herds, but not a single reactor  
to this disease was found.

This information comes from  
Dr. A. G. Beagle, Portland, in  
charge of the federal-veterinari-  
an in Oregon, and M. E. Knick-  
erbocker, Salem, chief of the di-  
vision of animal industry of the  
state department of agriculture.  
They say that for the state as  
a whole, only 80 reactors came to  
light in the 208,732 cattle tested  
under the joint federal-state pro-  
gram. While this percentage  
(0.038 per cent) is extremely low,  
it still shows why Oregon con-  
tinues the T. B. testing program  
under cooperative agreement with  
the federal government.

Curry county is one of 26 coun-  
ties which had no reactors last  
year, and one of 32 presently  
carrying T. B. modified and ac-  
credited status. The present  
three-year accreditation rating for  
this county is good until February  
1, 1957.

## Mrs. Wersch To Represent Firm

Mrs. Jules G. Wersch is now  
representing Dun and Bradstreet  
in the Brookings area. Her job is  
to establish credit ratings for in-  
dividuals and merchants in the  
area, and it is hoped that the busi-  
ness firms will cooperate by fill-  
ing out the necessary forms when  
requested. Mrs. Wersch said all  
the information received is kept  
confidential.

Integrity is the first step to  
true greatness.

## To The Office Cat



Dear Kit:

You see, you should have shared  
your milk; then perhaps you  
wouldn't have been ostracized for  
an issue or two.

I think your enthusiastic ap-  
proval of my former appeal for  
your help has borne fruit; groups  
of large dogs are conspicuous by  
their absence at least in this end  
of town which is also your end-  
of town. It is doubted that strict  
licensing would be effective, be-  
cause some owners think they  
have done their duty when they  
buy a license and that said license  
entitles the wearer thereof to fol-  
low the pursuit of life, liberty and  
happiness as he sees fit.

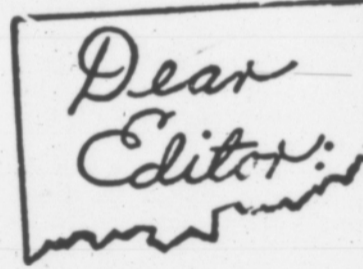
Would you be interested in a  
bit of nonsense which popped into  
my head one gloomy morning?  
**LAMENT OF A LAZY HOUSE  
LAMENT OF A LAZY  
HOUSEWIFE**

Up at 5:30, asleep in both eyes;  
To the front door to say my  
goodbyes.  
Back to the coffee pot, try to  
wake up.  
But start in to nod again over  
the cup.

At last I get dressed, and make  
me some toast.  
And wonder what housekeeping  
needs me the most.  
Ironing is sprinkled, it must be  
done.  
Bulbs to plant, if we get any sun.

Windows need washing, they're  
dirty as sin.  
Floors need mopping—how this  
dirt does come in!  
Beds to make, dusting, mending  
and such.  
Dishes to do—gosh, it all sounds  
so MUCH.

Just took a peek—the barometer's  
down.  
Oh, I check with the housework—  
I'm going to town.



... the letters start. Then from  
all over the free world come such  
comments as these from readers  
of THE CHRISTIAN SCIENCE  
MONITOR, an international daily  
newspaper:

"The Monitor is most read-  
ing for straight-thinking  
people."  
"I returned to school after a  
lapse of 18 years. I will get  
my degree from the college,  
but my education comes  
from the Monitor."  
"The Monitor gives me ideas  
for my work."  
"I truly enjoy its com-  
pany."  
You, too, will find the Monitor  
informative, with complete world  
news. You will discover a con-  
structive viewpoint in every news  
story.

Use the coupon below for a spe-  
cial introductory subscription —  
3 months for only \$3.

The Christian Science Monitor  
One, Norway St., Boston 15, Mass., U. S. A.  
Please send me an introductory subscrip-  
tion to The Christian Science Monitor—  
3 issues for only \$3.

(name) \_\_\_\_\_  
(address) \_\_\_\_\_  
(city) (state) (zip) PR-11

## Rice's Return From Extended Vacation

Col. and Mrs. Lee Rice returned  
last week from an extended trip  
through the south, southwest and  
midwest. They left Brookings on  
Dec. 6th, and drove to San Fran-  
cisco, driving over the Golden  
Gate bridge just as the sun was  
going down into the Pacific.

They left San Francisco on Dec.  
9th on the Burlington-Calif. Zep-  
hyr, Vista Dome, and saw snow  
all the way to Denver. Then they  
traveled to Kansas City, where  
they spent two weeks with Mrs.  
Rice's son and his wife, Mr. and  
Mrs. William Summerour, and  
two grandchildren, David and  
Ann.

They then visited Dallas, Ft.  
Worth, Mineral Wells, and Ar-  
lington, where they spent 10 days  
with Col. Rice's children, relatives  
and friends. They attended the  
Cotton Bowl game on New Years  
Day.

Next the Rice's spent a week  
in San Antonio, visiting friends,  
then to Kerrville for a day, and  
on to Carlsbad, New Mexico,  
where Mrs. Rice had lived for  
four years. After a week there,  
they visited Col. Rice's daughter  
in El Paso for several days.

On the way back to the coast  
the Rice's visited friends in Las  
Cruces, N. Mex., Tucson, Ariz.,  
San Diego, and Oceanside, Calif.,  
and then traveled on to San Fran-  
cisco and home. They had picked  
up a new car in Ft. Worth, and  
traveled home in it.

Mrs. Laura Cassidy of Portland,  
and nephews and niece, Mr. and  
Mrs. George Hursh and Ed Har-  
greaves of Oregon were in at-  
tendance at the funeral of the for-  
mer's sister, Mrs. Eddie West-  
brook.

Mr. and Mrs. Clive Manley, and  
Mr. and Mrs. Karl Ostberg are  
leaving Sunday for an extende-  
trip into California, and the de-  
sert country. Both couples plan  
on pulling a trailer during their  
vacation, which will take them to  
Palm Springs, and possibly to  
Mexico. They will be gone for  
several weeks.

## MR. 2 BY 4 BY CURFEY COUNTY LUMBER CO.



"It's a dehydrated bungalow!"

A complete line of building  
materials

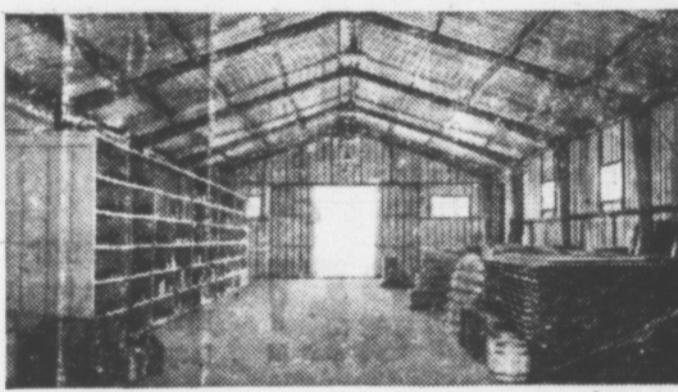
We Give S and H Green Status

## CURRY COUNTY LUMBER CO.

FRIENDLINESS & GOOD SERVICE  
IS OUR POLICY

PHONE 2201 BROOKINGS, ORE.

## You get more space per dollar with a BUTLER Building



Clear span interiors let you  
use all the space—from floor  
to roof—in a Butler building.



Look at a Butler steel building from the outside.  
Then step inside. You'll hardly believe your eyes,  
when you see the amount of obstruction-free space  
... all usable for your business.

You get the space you need—when you need it—  
and slash up to 47 per cent off your building budget.  
And Butler buildings can be erected in days instead  
of weeks, adding further to your savings.

What's more, with Butler buildings on the job, you  
have practically no maintenance expense. Galvanized  
or aluminum sheets, bolted tightly to the rigid steel  
framework, assure you years of weather-tight, fire-  
safe and wind-safe protection.

Before you build, let us show you how a Butler  
building can be adapted to your business. Call or  
write today.



**MEDFORD BLOW PIPE CP., INC.**  
P. O. Box 309  
Medford, Oregon



## World's best truck buys! Here's proof-

**POWER** proved by Pikes  
Peak climb! Dodge V-8 pick-up,  
AAA-supervised, climbed Pikes Peak  
in 20 minutes, 46.8 seconds ...  
unheard-of time for trucks, only a  
few seconds over the passenger car  
record.

**RUGGEDNESS** proved in  
50,000-miles-in-50-days  
endurance run! 50,000 miles in  
50 days, without mechanical failure!  
That's the record set by a standard  
Dodge pick-up with the new 145-hp.  
Power-Dome V-8 engine!

**ECONOMY** proved with  
over 22 miles per gallon aver-  
age in 714-mile economy run!  
22 miles per gallon, carrying 500  
lbs. of payload, using regular gas!  
That's the average of a Dodge  
Power-Dome pick-up in a 714-mile,  
AAA-supervised Economy Run!

**REAL DEALS**—prove for  
yourself how they can save  
you money! Dodge trucks are  
priced with the lowest. Save  
you money every mile. And Dodge  
dealers are offering the year's best  
deals—all models 1/2- thru 4-ton!

Added proof  
of a better deal  
for the man at  
the wheel with...

## DODGE "Job-Rated" TRUCKS

A PRODUCT OF CHRYSLER CORP.  
**C. "ED" DEMPSEY**

HY.101 NORTH YOUR DODGE-PLYMOUTH DEALER BROOKINGS

## WHEN YOU SHOP IN COOS BAY

Have your car Serviced

At Lou Blanc, Inc.

Leave your packages in your car throughout the day

Complete Service Fair Prices

Cadillac and Oldsmobile  
Safety-Tested Used Cars

Visit Our Wholesale Row

**LOU BLANC, Inc.**

Across the street from the Post Office in Coos Bay