

12 Brookings-Harbor Pilot
THURSDAY, NOV. 11, 1954

SAM GORDON KIBITZER COMING

Much interest is being reported in the coming bridge lessons to

be given here next week by Sam Gordon, the Kibitzer. It is a good idea to know the rudiments of any game and bridge is no exception. When you can learn these basics for a mere two dollars and at the same time have a lot of fun and entertainment by a clever man, it's a chance not to be overlooked.

Bridge is a cinch, according to Sam Gordon, whose visit is sponsored by the Garden Club on November 18, 19, 20. The only aim of two partners in a bridge game is to tell each other how many tricks they expect to take; and what will be their best trump suit, if any; that's all. To give this information, a player need not be

a soothsayer nor a fortune teller. All they need to play an acceptable game is to learn a few basic rules.

His method of counting tricks is the natural way any player would use if he were not confused by complex rules. You merely count the total of your aces, kings, queens and the tricks you expect

to trump. Everything else is just as simple.

See a Garden Club member for advance reservations for the series or for the first night, to find out how easy it is.

That which is born of the flesh is not man's eternal identity.

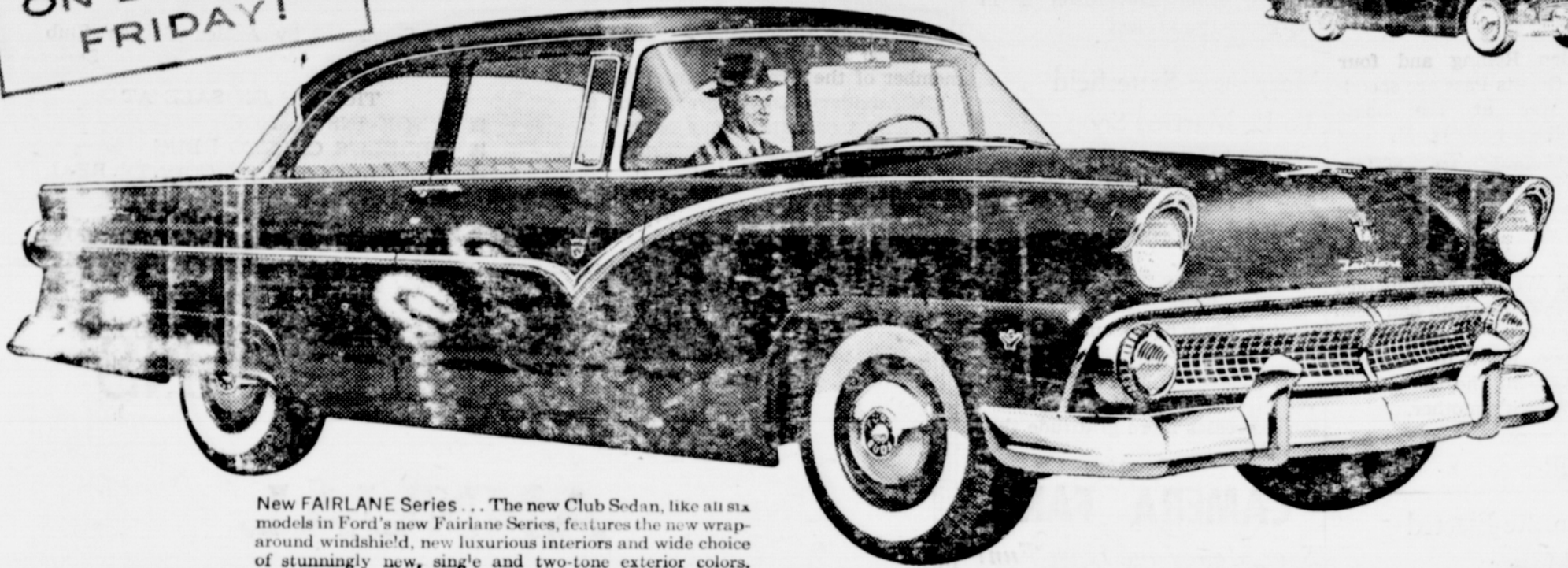
Mary Baker Eddy

The world's greatest builder of V-8's presents

THE TOTALLY NEW '55 FORD!

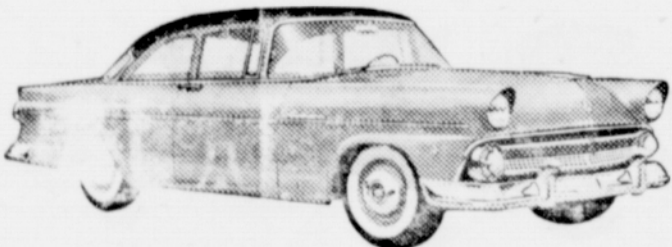
ON DISPLAY
FRIDAY!

with styling inspired by the Ford THUNDERBIRD

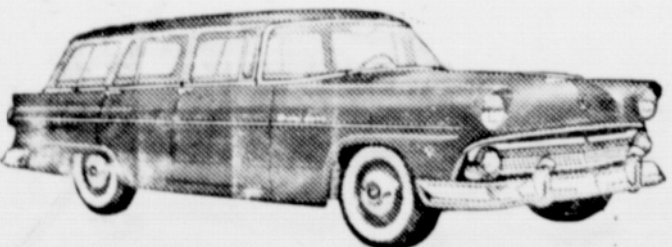


New FAIRLANE Series . . . The new Club Sedan, like all six models in Ford's new Fairlane Series, features the new wrap-around windshield, new luxurious interiors and wide choice of stunningly new, single and two-tone exterior colors.

Longest, Lowest, Roomiest...most Powerful ever built!



New CUSTOMLINE Series . . . The Tudor Sedan (above) and Fordor offer a wide selection of new color and upholstery combinations. Like all '55 Fords, they have a new wider grille, new visored headlights and sturdier, extra-narrow pillar-posts for better visibility.



New STATION WAGON Series...The new 6-passenger, 4-door Country Sedan (above) is one of five new do-it-all beauties. There's also an 8-passenger Country Sedan, an 8-passenger Country Squire and a 2-door, 6-passenger Ranch Wagon and Custom Ranch Wagon.

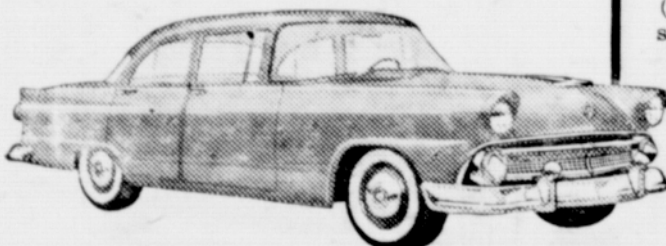
We invite you to see for yourself. And we tell you in advance you'll be *amazed*. For this new Ford is *totally* new—outside, inside, and in thrillingly different performance.

The long, low lines of the Thunderbird were its styling inspiration. Inside, you'll be greeted by rich, roomy luxury . . . by fabrics never before offered in a motorcar.

Mighty engines, mightier than in any Ford before—supply its exciting power. And each of Ford's three new engines offers the safe, split-second response of Trigger-Torque Power.

Your ride will be up to 15% smoother. Best of all, you'll find *your* kind of car, for there are 16 body styles in four fresh new lines.

When you come in, don't be surprised if you tell yourself: *why look farther—why delay—you just can't buy better than Ford.*



New MAINLINE Series . . . Each of the three Mainline beauties offers the same engineering advancements, the same graceful contours and clean lines that distinguish all '55 Fords. Fordor Sedan is illustrated above.



EXCLUSIVE TRIGGER-TORQUE POWER IN 3 MIGHTY ENGINES

1. 162-h.p. Y-block V-8
2. 182-h.p. Y-block Special V-8
3. 120-h.p. I-block Six

(1) The new 162-h.p. Y-block V-8 has a higher (7.6 to 1) compression ratio, greater displacement. And, like all '55 Ford engines, it has Ford's famous deep-block build . . . short-stroke design.

(2) The new 182-h.p. Y-block Special V-8 (offered in combination with Speed-Trigger Fordomatic on Fairlane and Station Wagon models) features 4-barrel carburetion, dual exhausts and extra-high (8.5 to 1) compression ratio.

(3) The new 120-h.p. I-block Six has a new higher (7.5 to 1) compression ratio. It's the most advanced six-cylinder power plant in the industry.

ALL WITH TRADITIONAL FORD ECONOMY

PLUS ALL THESE OTHER BRAND-NEW WORTH-MORE FEATURES

- ★ New Speed-Trigger Fordomatic Drive
- ★ New Turbo-Action Spark Plugs
- ★ New 10% Larger Brakes
- ★ New Tubeless Tires
- ★ New Angle-Poised Ball-Joint Suspension
(Fordomatic Drive optional.)

'55 FORD

The fine car of its field

F.C.A.

DUNNING MOTORS

Highway 101 North

BROOKINGS