

STRIKE CAUSES FIR PRODUCTION HERE TO DROP

Lumber production, orders and shipments for the Douglas fir region for the first eight months of 1954 were released today by Harris E. Smith, secretary of the West Coast Lumbermen's Association.

The weekly average of West Coast lumber production in August was 102,976,000 b. f. or 53.6% of the 1949-1953 average. Others averaged 103,448,000 b. f.; Shipments 109,717,000 b. f.; Weekly averages for July were: Production, 79,821,000 b. f.; 41.5% of the 1949-1953 average; Orders 83,754,000 b. f.; Shipments, 85,026,000 b. f.

Eight months of 1954 cumulative production 5,975,644,000 b. f.; Eight months of 1953, 7,077,332,000 b. f.; Eight months of 1952, 6,668,612,000 b. f.

Orders for eight months of 1954 breakdown as follows: Rail & Truck 4,605,536,000 b. f.; Domestic Cargo 1,180,570,000 b. f.; Export 326,907,000 b. f.; Local 236,871,000 b. f.

The industry's unfilled order file stood at 866,982,000 b. f. at the end of August, gross stocks at \$16,513,000 b. f.

Figures covering the second quarter of 1954 have been adjusted to latest information available.

Figures covering the months of July and August, 1954 have been estimated to give consideration to the decrease in industry lumber production resulting from the recent labor strike.

PAINTS HOUSE

The Marshall N. Dana house is being painted this week by L. H. Kirtley, Dana, a well known writer, and former editorial writer for the Portland Journal has been visiting Brookings occasionally this summer.

SAVING BOND SALES MAKE JUMP

The people of Oregon made another spectacular purchase of U. S. Treasury Department E and H Savings Bonds during August, according to Mr. E. C. Sammons, Chairman of the State Savings Bond Committee, who released sales figures for last month today.

Savings Bonds sales in the state totalled \$3,295,511, a jump of over a million dollars over the same month in 1953. The increase amounted to 47%, and was again achieved in the face of the lumber industry strike.

Plans are now underway for an all out effort for the remainder of the year to reach Oregon's quota of \$37,500,000. Treasury Department officials, he said, emphasize in the strongest terms the need of re-financing increasing maturities of War Bonds through the sale of Savings Bonds. Old timers will remember that the VI War Loan Drive occurred in the fall ten years ago, and it was at that time that the high point was reached in the War-time sale of E Bonds.

Curry County sold \$11,399 in August, compared to only \$6,106 a year ago August. The total sales amount to \$209,922 for this count, compared with only \$42,720 a year ago for the seven months.

The artist ought never to perpetuate a temporary expression.
—Ralph Waldo Emerson.

Spiritual force is stronger than material; thoughts rule the world.—Ralph Waldo Emerson.

LES SHANAHAN

For
Well Drilling

Contact
Par Store
Chetco Inn or Hanscams

4-Square USED CARS

1951 PLYMOUTH
RADIO HEATER

1952 JEEP STATION WAGON
4 WHEEL DRIVE

1951 CHEVROLET 4 DOOR
RADIO HEATER

1951 CHEVROLET 2 DOOR
A REAL BUY!

1952 DODGE 1/2 TON

1949 BUICK SUPER
4 DOOR — RADIO, HEATER
A BEAUTIFUL RED COLOR

Menning Buick



BUICK CARE KEEPS BUICKS BEST

Highway 101

North End Of Town

FREEMAN'S MARKET

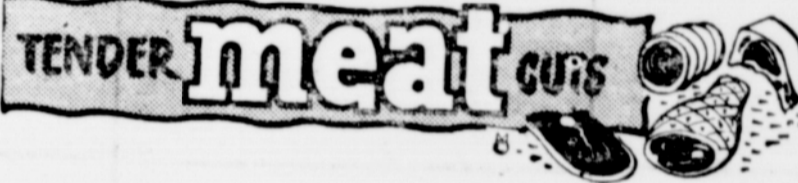
PHONE 2411

U. S.
GRADED
CHOICE BEEF

Thursday
Friday
Saturday

FRESH FRUIT
and
VEGETABLES

JACKPOT **\$5.00** VALUE DRAWING EVERY EVENING
AT 6 p. m.. NEED NOT BE PRESENT TO WIN



BACON ARMOURS—1 lb. SLICED
LEAN **lb 49c**

ARMOURS, BONELESS FATTED, CANNED—4 1/2 lb.
PICNIC HAMS **ea \$3.49**

BEEF ROAST BLADE CUTS OF
U. S. CHOICE BEEF **lb 49c**

GROUND BEEF LEAN GROUND
FRESH DAILY
lb 39c **3 lbs. \$1**

U. S. CHOICE BEEF

Why pay the same price or more for poorer grades of Beef—Buy where you get the mostest of the bestest for your money.

—BART THE BUTCH

P. S.—Fresh Barrel of Dill Pickles:

2 FOR 15c

We will be closed Sunday and every other
Sunday Following