

BROOKINGS-HARBOR PILOT

THERE'S NO SUBSTITUTE FOR CIRCULATION

Entered as second-class matter, at the postoffice at Brookings, Oregon, March 7, 1946, under the Act of March 3, 1879.

MINNA AKERS, Owner and Publisher

SUBSCRIPTION RATES:

One Year, in advance (in Curry County) \$3.00
One Year, in advance (outside Curry Co.) \$3.50

Classified Adv. Rates 15c per line—Min. 50c cash

National Advertising Representative

WEEKLY NEWSPAPER REPRESENTATIVES, INC.

New York • Chicago • Detroit • Philadelphia

NOTICE TO SUBSCRIBERS: Kindly notify of any change of address in advance. Failure to do so costs two cents per issue sent to the old address. Subscription will be dropped unless subscriber notifies Pilot of change.

COMMUNITY BUILDING (Guest Editorial)

We have all done a lot of talking about our proposed Community Building—especially the Chamber of Commerce and other service clubs. As to date not much action has been taken.

During the three weeks preceding the Curry County Fair I had occasion to meet with the officers of the Chetco Wranglers. I was pleasantly surprised to find they have arranged for purchase of a tract of land near the down-town area and hope to build a club house in the near future. I asked if it would be possible to make it a community project and all pitch in and locate our community building there. They were more than pleased with the idea.

My hat is off to the Wranglers.

It looks as if they are going to show us up, in the service clubs, what the term "Community Service" really means.

Now, we have a group leading the way. We need a community building. It's high time we pitch in and help.

—Paul Davis, President Chamber of Commerce.

CORRECTION

Through typographical error in last week's paper, life membership in the Library Association would cost \$1000.00. This was erroneous. The life membership can be purchased for \$100. Mrs. Myrtle Schaal, Harbor, is secretary of the board.

Reach that buyer through a Pilot Classified Advertisement.

REMNANT SALE . . .

Inlaid Linoleum

Print Linoleum 6 and 9 ft. wide
9x12 Print Rugs
Print Throw Rugs—18x36 in.
Wool Rugs—27x54 in.

KARL OSTENBERG
FLOOR COVERINGS

FOR SALE

New Compact 2-Bedroom Home

LOW DOWN PAYMENT

Immediate Possession

Write Box 10 — Pilot Office

Cur-Del Cleaners

Fast, Efficient Cleaning & Pressing!

PICK-UP AND DELIVERY SERVICE!

PHONE 2863

Agents for Del Norte Laundry

With The Churches

Assembly of God

At I. O. O. F. Hall
W. R. PATTERSON, Minister
Residence: Pioneer Road
9:45 a. m. Sunday school.
11 a. m. Morning Worship. Come for Sunday school and stay for this worship hour.

6:45 p. m. Christ's Ambassadors
7:45 p. m. Evening worship.
Prayer meeting each Thursday at 7:30 p. m. at Parsonage on Pioneer Road.

The church where you hear the whole gospel for the whole man.

Baptist Community

J. L. MUMBOWER, Minister
Mrs. A. F. Pierce, Sunday school superintendent.

Sunday school for all ages at 9:45 a. m.

Morning worship at 11 a. m.
Evening Service at 7:30 p. m.
Prayer meeting and Bible study at 8:00 p. m. Wednesday.

Choir practice, Thursday at 8 p. m. Mrs. Lucille Patterson, director.

Brookings

Lutheran Mission

The Church of the Lutheran Hour

W. O. Grunow, Pastor

745 I St., Crescent City, Calif.
Telephone 2424, Crescent City

All services are held at St Timothy's Episcopal church opposite the schools.

Sunday school every Sunday at 6:30 p. m.

Divine services every Sunday, at 7:30 p. m.

1:00 p. m. Lutheran Hour over KCRE, Crescent City, sponsored by the Lutheran Layman's league and in part by Brookings Lutheran Mission. Tune in.

Seventh-Day Adventist

MANSON METCALF, Pastor

9:30 a. m. Sabbath School on Saturday.

11:00 a. m. Sermon.

8:00 p. m. Wednesday, prayer meeting.

Christian Science

Sunday school from 9:30 to 10:30 a. m. Children and young people up to age of 20 are welcome.

Services Sunday at 11 a. m.
Wednesday, testimonial meetings at 8:00 p. m.

Reading room in church, open Friday 3:00 to 5:00 p. m.

Corner of Pine and Alder
Across from the Greenhouse
All are cordially invited.

Brookings

Lutheran Services

(American Lutheran)

Divine Worship Services, 2nd and 4th Sunday evenings of the month at 7:30 p. m.

Place: Chetco Grange Hall.
Pastor: Rev Norman L. Orth, of Coquille, Oregon.

Sunday school and adult Bible classes at 10 a. m.

These services are held by the authority and assignment of the National Lutheran Council, representing most of Lutheranism in America. Come! You are always welcome!

St. Timothy Episcopal

Rev. C. M. Lever, Pastor

Sunday Services:

At 9:00 a. m. except fourth Sunday when services will be held at 12 noon, Daylight time.

The question for Sunday, Aug. 17, is: "Why was Sacrament of The Lord's Supper Ordained?"

Star of the Sea Catholic

First Sunday of the month at 11:00 a. m.

Other Sundays at 8 a. m.

Rev. Fr. Donald Deaman

Church of Christ

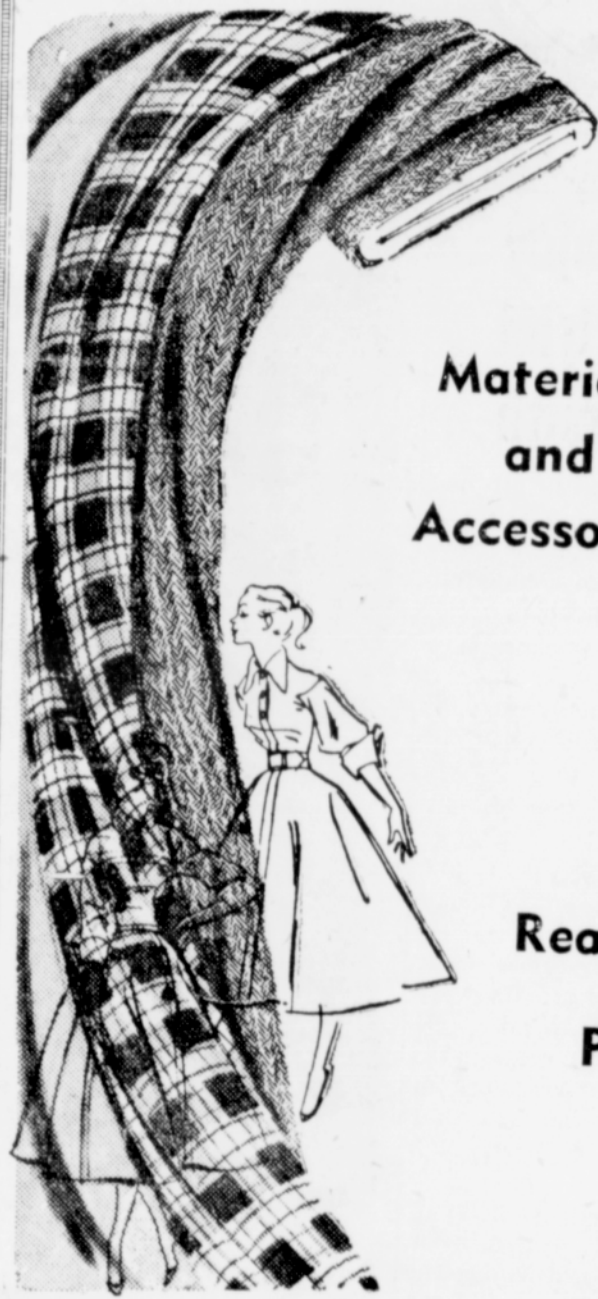
V. F. W. Hall

EVERY SUNDAY

Radio program at 7:15 a. m. over Radio Station KIEM.

Worship hour at 11 a. m.
Bible Study at 10 a. m.
Communion at 11:45 a. m.
You are always welcome!

Find what you want through the Pilot Class Ads.



Materials and Accessories

at Reasonable Prices

THE YARDSTICK

Azalea Road

Across from Chetco Inn

YOUR

Signature

ON A CHECK . . .

and the bill is paid and receipted. That is all there is to it.

A checking account makes it unnecessary to carry large sums of money on your person. You can leave it in the bank where it is safe and draw it out by check as you need it.

This is the simplest, surest and most business-like way of conducting your affairs. We invite you to open a checking account at this bank.

OREGON STATE BANK

BROOKINGS, OREGON

"Your Dependable Home Institution"

Member Federal Deposit Insurance Corporation