

**May 12 Date For Opening Of Bank**

According to Estes L. Morton, who will be manager of the new Oregon State Bank, the institution will open its doors to the public on Monday, May 12. The reasons for this delayed opening are explained:  
The Vault door is now being

put in place, and the 3 1/2-ton door must be placed just right with all the time locks in perfect condition before the manufacturer's representative will surrender it to the bank. The state law emphatically states that the charter will not be dated and granted until the bank is ready to open for business without any impediments of any kind. The door, had it been in place sooner, would have permitted an earlier opening. The

federal deposit insurance is not effective unless the vault meets certain specifications, either, and for that reason part of the delay. For the past week, new book-keeping machines have been installed by the Burroughs experts so that these will be in readiness for the opening. Personnel training must also be completed on these machines in the meantime. Many of the supplies for the bank have not arrived, and some

are with the Pilot for early delivery. Once open, the bank routine will not likely have anything to hamper continuous operation.

**What Work Was Involved In Edition**

Just a few pounds less than two tons of newsprint went into the printing of this special edition of the Pilot, will give something of an idea of the magnitude of the task the Pilot made in order to "tell the world" about the progress made by this area since 1940 when the Pilot first came into existence.

The pictures which grace these pages cost several hundred dollars on the open market, and had not been for the fact that the Pilot was able to care for this phase also, the cost would have been almost prohibitive unless a great deal of subsidy had been forthcoming from the advertisers in this issue.

More than 100,000 sheets of paper were fed through the newspaper press to accomplish this effort on the part of the Pilot. Paul Peterson and Dewey Akers have had no rest, and Ronald Akers, whose every free hour has been spent in this effort, know what the physical effort has been.



**Eu-Lee's Dress Shop**

*Eunice Langlois—PROPRIETORS—Lydia Browman*

**Coats, Suits, Dresses and Hats, Slacks, Sweaters Lingerie and Hosiery!**

Though our shop is small, we carry merchandise we are proud to show—featuring such well known lines as SACONY, GRAFF CALIFORNIA WEAR, KORET OF CALIFORNIA, NARDIS OF DALLAS, VAN RAALTE AND MOJUD LINGERIE AND HOSIERY and MADCAP HATS FROM NEW YORK.

*OUR MOTTO—"TO SERVE MILADY"*

KRUGER BUILDING BROOKINGS PHONE 2613

**CONGRATULATIONS**

**Brookings Plywood Corporation!!**

For Coming To This Section Of Oregon!

Your Presence will mean much to the economy of Southwestern Oregon!

**W. M. SCHINDHELM**  
Standard Oil Company Products  
Phone 801 Crescent City, California

**NORINE HARVEY**

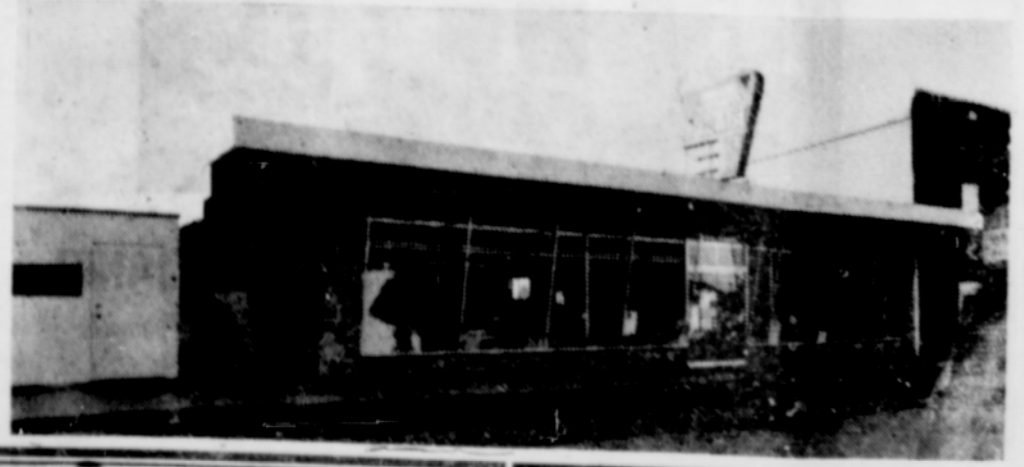
*Teacher of Piano, Voice, Pipe Organ. High School Credits.*

Studio Building BROOKINGS, ORE.

S. W. Oregon's Most Modern Super Food Market



**Wilson Freeman's Chetco Store**



**SINCE 1940... Growing With And Serving S. W. Ore.**

**First Electricity**

First electricity was turned on in November, 1940, at Sitkum, when the Coos Electric Co-operative began operations. That small start did not tell, or could one even predict what was yet to come. That was in 1940, before people found out about the opportunities of Southwestern Oregon.

been able to meet all demands made upon it for power for new industries or businesses. From the few members at Sitkum in 1940, the co-operative has grown to include more than 36,000 members. The power output each month today far exceeds 1,500,000 KWH of energy.

**Demand Not Yet Reached**

From the points between the two extremes of the co-operative daily there are demands made for power to new sawmills, plywood plants, and countless other new businesses which are locating in the Southwestern Section of Oregon.

It is being too optimistic to believe that all can be served until Bonneville Power Administration can complete its line to Gold Beach sometime in the summer of 1952. By then, with Bonneville on a complete circuit through Mountains States Power Company and California-Oregon Power Company, this "bottle-neck" will continue to hamper progress to a certain extent. After that time, the Co-operative hopes to keep abreast with all expansion and development of the section.

**Areas Now Being Served**

Since that small start, since those days before World War 2, the Coos Electric Co-operative expanded and re-expanded until today it includes the areas of Fairview, McKinley, Lee, Sitkum, Gravel-ford, Dora, Bridge, Broadbent, Remote, Bandon, Myrtle Point, Port Orford, Ophir, Gold Beach and the Brookings and Harbor area to the State Line.

**And The Growth Is Only Beginning**

**Development Dependent On Power**

By expanding to include Curry County in addition to Coos County, so it is now known as Coos-Curry Electric Co-operative, the co-operative has tried to keep abreast with development, but hasn't

**Coos-Curry Electric Co-Operative, Inc.**

**Board Of Directors**

- President—Ivan Laird, Sitkum.
- Vice-President—A. E. Sandbo, Brookings.
- Secretary-Treasurer—David Philpott, Bandon.
- Directors: Powell Lancaster, Bridge; Fred Adams, Ophir; Ellis Shull, Broadbent; David Shaw, Gold Beach; Jack Dean, Bandon; Chas. Brooks, Port Orford. General Manager, Bruce Shavere, Coquille. Offices at, Port Orford, Gold Beach, Brookings.