

### P.-T. A. Sponsors Teen-Age Party

The Parent-Teachers Association will sponsor a party for the teen-agers at the high school gym Friday night, March 28. Mrs. Joe Zumpfe, president, has appointed Archie Hendricks and Al Panzer as chairmen of a ping-pong tournament.

There will be a variety of games under leadership of Rev. and Mrs. J. L. Mumbower and Mrs. Lynn Hampton.

Mrs. George Murry will arrange dancing and Mrs. Lee English and Mrs. Ann Bushnell will serve refreshments. These chairmen will be assisted by other members of the P.-T. A. and the youth of the area will find recreation they will most enjoy, during the evening. All teen-agers are welcome.

### National Forest Timber For Sale

Sealed bids will be received by the Forest Supervisor, Post Office Building, Grants Pass, Oregon, up to and not later than 2:00 P. M., Pacific Standard time, April 23, 1952, for all merchantable dead timber standing or down located on an area designated as Eagle Burn Unit No. 1 embracing approximately 120 acres within Sec. 6 & 7, T. 39 S., R. 12 W., W. M., and lying on Northern Prairie Creek within the Chetco River watershed, Siskiyou National Forest, Oregon, estimated to be 1,000,000 board feet, more or less, of dead Douglas-fir and other species of dead sawtimber. All standing dead timber within the sale boundaries will be considered as marked for cutting and the sale contract will require that all such dead timber be felled. No bid of less than \$500.00 for the total volume of timber as estimated above will be considered. In addition to the price bid for stumpage a co-operative deposit of \$750.00 to cover the cost of tree planting, seed sowing, and timber stand improvement work on the area cut over will be required. \$1250.00 must accompany each bid to be applied on the purchase price, refunded, or retained in part as liquidated damages according to the conditions of sale. The right to reject any and all bids is reserved. Forest Service bid forms for use in submitting sealed bids and full information concerning the timber, the conditions of sale and the submission of bids should be obtained from the District Ranger, Gold Beach, Oregon, or the Forest Supervisor, Grants Pass, Oregon, before bids are submitted. On April 9, at 9:00 a. m., a forest officer will meet interested parties at the State Forest Patrol headquarters, Brookings, Oregon, to explain the conditions of the sale and to conduct a tour to show the timber offered for sale.

4-1

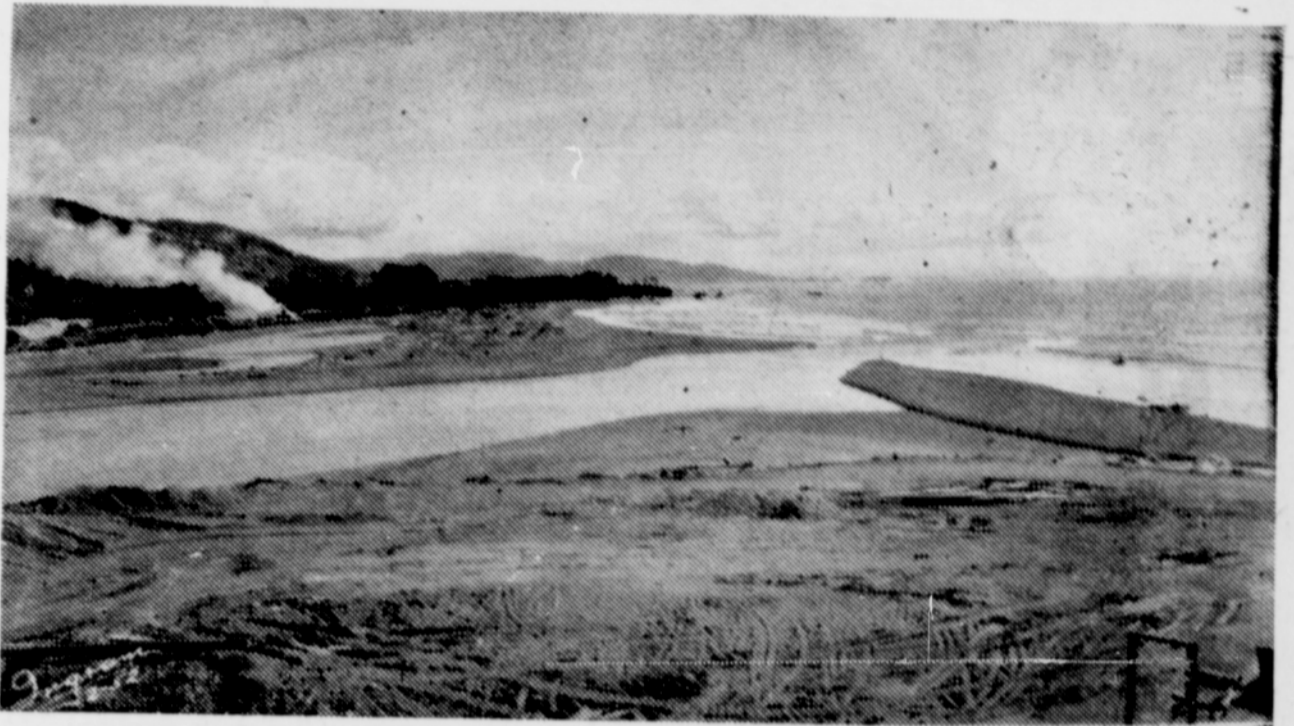
### Wridge at Portland

W. B. Wridge, whose countenance is sorely missed here by his friends, now is located at 1331 S. W. 12th St., Portland, 1, according to Mrs. W. P. Clement, who cheers him with cards and word from friends. Bill, noted especially for his "Retired Lily Grower" comic floats each year, is taking treatment at Portland. He left here about Thanksgiving last year.

### Teen-Agers Party

The Teen-age party, sponsored by the Better Half Club and held at the Chetco Rod & Gun Club hall, was attended by 92 teen-agers, Friday. Dancing and other entertainment including bingo, prizes donated by the Better Half club, were enjoyed. Refreshments were served.

### Where Majestic Chetco Wends Its Way To The Ocean



The Chetco, as a fishing stream, is proclaimed by hundreds as the "ideal" spot to spend those hours in quest of those beauties which fit best in the average frying pan. In the fall silversides run in this tree-line stream. This is the view where it enters the Blue Pacific. This spot, once given the Okay by the army engineers for development, is potentially a haven for a fishing industry which could mean many millions of dollars to the economy of this county as well as Oregon. *Ingram Photo.*

**IT'S NEW!  
IT'S DELUXE!**

### FRIGIDAIRE



CASH PRICE  
**\$364.75**  
\$74.75 down



- Roll-to-you Shelves
- Cold-Wall Cooling
- Full-width Super-Freezer Chest
- Twin, all-porcelain Hydrators
- Food-Safety Indicator
- Super-Powered Meter-Miser

See the new Cycla-matic and all the other new Frigidaires!  
Priced from \$000.00

### HANSCAMS

Harbor, Oregon

### HOGUE'S MARKET

Gold Beach, Oregon

*You'll say it more than once!*

After you've owned one of our new International Trucks with stake bodies awhile, you'll say: "THIS is really a truck!" And, you'll say it more than once!

You'll say it when you discover the beautiful balance between pep and power built into these trucks. And you'll say it often as your International saves you money as it rolls through the years.

Why pass up performance like this? See our new International Trucks now.

#### Only Internationals give you—

- All-truck engines—built in the world's largest truck engine plant.
- The "roomiest, most comfortable cab on the road"—the Comfo-Vision Cab.
- Super-steering system—more positive control, easier handling and 37° turning angle.
- The same traditional truck toughness that has kept International first in heavy-duty truck sales for 20 straight years.
- The truck engineered for your job . . . 115 basic models, from ½-ton to 90,000 lbs. GVW ratings.
- Largest exclusive truck service organization.



### Buy on Proof!

Before you buy any truck, get the facts about Internationals from actual owners. Let us give you a list of persons in this area who have recently bought new Internationals like the one you are considering. Check with any or all of them. Find out how Internationals cut hauling costs on jobs like yours.

Model L-162, 154-in. wheelbase, 12-ft. stake body, 16,000 lbs. GVW.

For complete information about any International Truck, see—

## Davis Truck and Tractor

**INTERNATIONAL TRUCKS**

More than One Million Now on the Road

## WARNING!

Dogs are being poisoned with wieners. Please watch children that they do not pick up or eat any found anywhere.

**BILL BROWN, Chief of Police**