

### Along Azalea Row

By B. Miller

Here in our Chetco Valley, it seems as if each one of us has some special talent, some contribution peculiarly his own, to make toward the happiness of the rest of us. Never more apparent is it, than the afternoon planned for Azalea Garden Club members and friends for Thursday, Dec. 14, at 1:30 p. m.

Azalea Singers go about these days with twinkling eyes and Mona Lisa smiles on their lips. They won't give out about Azalea Garden Club's Christmas program in keeping with the season, it's to be a surprise. They have been practicing and preparing for this special event, and you'll love it.

Baking aromas of spices and fruits are wafted over the Chetco River. It is Mrs. Vic Reynolds with an eye on the oven. Her husband, you know, won his chef's hat and apron from Sunset Magazine, and it runs in the family. Elsie is chairman of hostesses and assisted by Mrs. C. W. Judkins,

and Mrs. Thomas Carson. Mrs. Harry Lockland has been busy with red berries and cedar branches, her ability in this direction is well known.

A talented trio, Mrs. Ben Kerns Jr., Mrs. Ruth Bathiany and Mrs. Webster Hibbard, have prepared a program in true Christmas spirit. Mrs. Charles Grayshel has yuletide ideas for Holiday Festivities.

Each attending has a part in the pleasures of the afternoon, as she brings something of her own special talent to share with a neighbor, as well as a gift or toy or useful article for an older person.

When all the world seems to be threatened once more with war, for the span of a brief afternoon, the women of the community will join in a program of 'peace on earth, good will toward men.'

Azalea Garden Club dessert luncheon, Dec. 14.

Luther Tisdale says azaleas are blooming in the park now, and we should come up to see them. I haven't done so, but on such a

sunny afternoon as this should lay aside Christmas preparations and go. Our park is beautiful at any season of the year. Paul DeBlock asserts that nine varieties of azaleas bloom here, so these flowers are with us practically the year around. We should plant a lot more of the late-blooming varieties about our homes and gardens, and thus insure a succession of blooming azaleas.

I read an informative article in that nice little Home Garden Magazine the other day concerning evergreen trees. It seems evergreen trees are not really evergreen at all, but simply shed their leaves in a modest sort of way, so that they are not bare all at once as deciduous trees are. Only one tree, said the author, was truly evergreen, and kept the same leaves the duration of its life span. This is the welwitschia, growing in southwestern Africa. It produces only two leaves which it keeps to the bitter end. The life span is unknown. It may be anywhere from 100 years to 1000. The leaves grow to be about

six feet long, and rest on or near the soil.

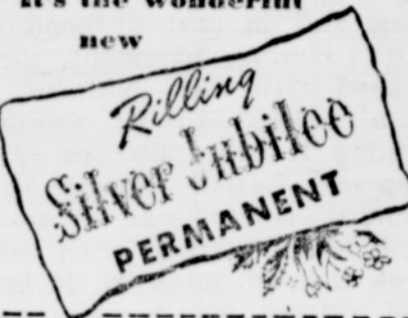
Spruce trees drop needles every month, but the heaviest drop is during May. White pines discard their needles in September and again in June. Scotch pine in September, October and November. The arborvitae does not discard just the acutula needle, or leaf, but discards the entire branchlet—stem and all.

Use these columns—it pays! Send the Pilot to a Friend!



the lasting loveliness of a wave that's alive with luster... yet soft as candle light.

It's the wonderful new



Call for your appointment today \* Courtier's Beauty Studio

### Drivers Examiner

The drivers license examiner will be at Chetco Grange hall Friday morning from 8:30 to 12. Anyone desiring a license should be there early in order to complete their tests before closing time.

### NOTICE

To my Brookings subscribers for The Oregonian: Sundays only, delivery will be made after 11 a. m. These papers do not come on the morning bus as do the dailies. Daily deliveries are same as before. Dorothy Simpson, agent.

# OFFICE SUPPLIES

For that young man or lady who is in school, who may have endless themes, papers and reports to 'hand in', a new "Smith-Corona" typewriter could be the greatest Christmas present you could possibly give. Place a gift certificate under the Christmas tree, and watch the delight.

Office supplies, including adding machines, cash registers, typewriters, together with business forms are being made available in Curry County through Brookings-Harbor Pilot and the Typo-print, at Gold Beach.

Go to your nearest office and make known your wants. It may be surprising how easily all these may be solved, and quickly.

ADDING MACHINE ROLLS      SCRATCH-PADS  
CARBON PAPERS      TYPEWRITER RIBBONS  
MOST ALL BUSINESS FORMS

PHONES: Gold Beach 984; Brookings 283

## GO EAST VIA CALIFORNIA

...no extra rail fare!

Want a truly different round trip East—at the same rail fare you'd pay to go straight East and back via direct route?

THEN GO VIA SAN FRANCISCO and S.P.'s picturesque "Overland Route"—over the High Sierra, across Great Salt Lake and on to Chicago.

OR GO VIA LOS ANGELES and S.P.'s "Golden State Route" via Phoenix, Tucson and El Paso to Chicago.

GOING TO NEW YORK? You can include romantic New Orleans and the colorful Old South at no extra ticket cost.

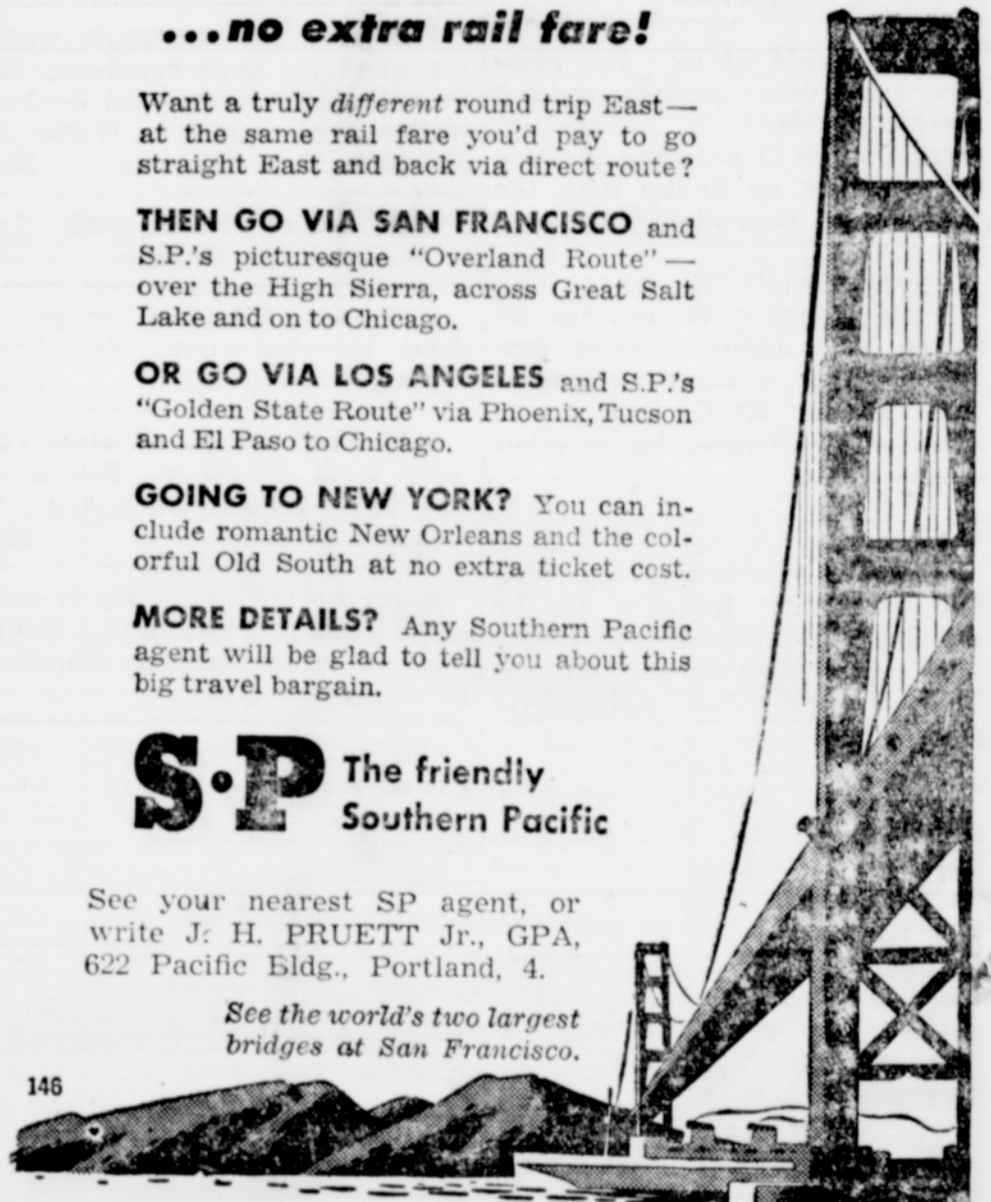
MORE DETAILS? Any Southern Pacific agent will be glad to tell you about this big travel bargain.

**S.P.** The friendly Southern Pacific

See your nearest SP agent, or write J. H. PRUETT Jr., GPA, 622 Pacific Bldg., Portland, 4.

See the world's two largest bridges at San Francisco.

146



## Pacific Engine & Machine Works

CRESCENT CITY, CALIF.  
PHONE 2341

LARGEST STOCK . . . . .

V-Belts and Pulleys