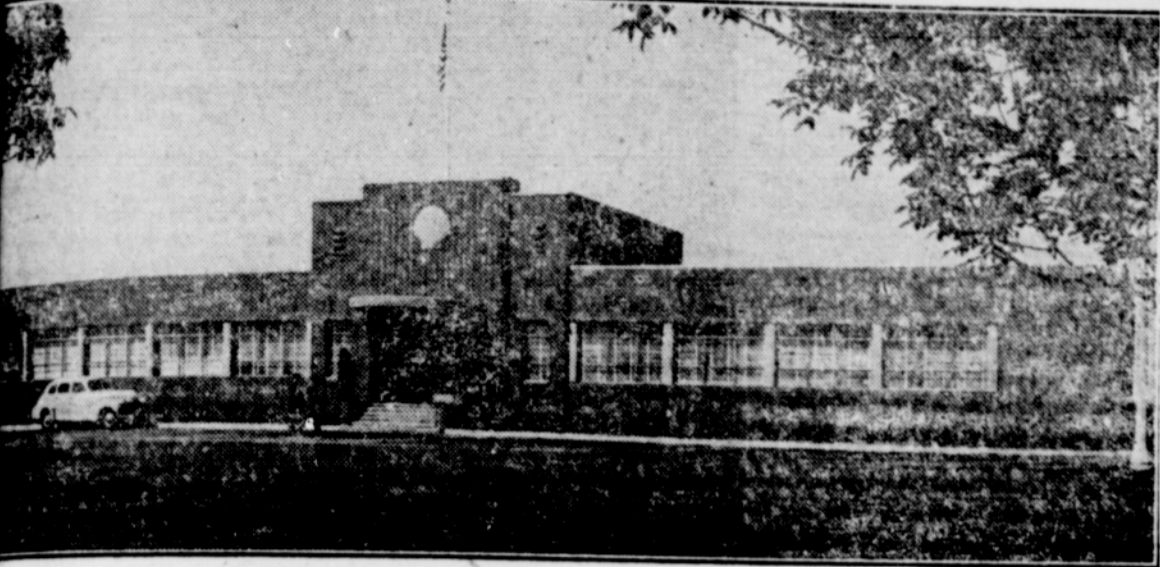


AGRICULTURAL RESEARCH CENTER



The West's largest laboratory and experimental devoted exclusively to the development of new improved agricultural chemicals was placed in operation recently near Modesto, Calif., by Shell Oil

Company, Incorporated. Investing more than a half-million dollars in the project, the company employs a scientific staff of 30 to aid farmers in all phases of agricultural advancement.

Shell Oil Co. Farm Research Center

Farmers gained a new partner this week when Shell Oil Co., Inc., dedicated and in operation its new half-million dollar agricultural laboratory and experimental farm, 12 miles northwest of Modesto.

The new laboratory is the center of the company's agricultural research in the United States and is one of similar size and location in the west, according to Roy Hansberry, director.

The farm is surrounded by a 142-acre tract producing a variety of crops for field testing on a commercial scale. Construction of the research center was started a year ago. Facilities include a modern, fireproof main building which accommodates research laboratories and administrative offices, greenhouses and a connected service house, a large lath house and service building or garages.

The laboratory staff of 30 has been assembled from all sections of the country on the basis of specialized training and experience in every phase of agricultural science.

In explaining the need for the research center, Dr. Hansberry stated a three-fold purpose. "Most important, it is to establish an institution for development of new ideas. It is also a provision for natural and synthetic products derived from petroleum and, finally, a clearing house of scientific knowledge and information where farmers' problems may be presented and corrected."

The farmer wages a continuous war against pests and plant diseases," Dr. Hansberry added. "He suffers losses from toxic soil conditions, tree decline and a host of plant blights, wilts, rots and rusts. Chemicals are needed to combat damaging micro-organisms in the soil. These are but a few of the problems that challenge the researcher and that the Shell Oil Co. is endeavoring to answer by scientific experiment."

The location at Modesto was selected because of its suitability for growing a wide range of all crops needed in the research program, it was explained. The projected planting will provide 100 acres of trees and vines of all commercial types and 30 acres of truck crops. The remaining 12 acres are utilized by the buildings and improved roads.

Additional buildings and service units including ranch houses, implement storage and warehouses, and a fruit handling place will be constructed when materials are available. The farm has been improved by clearing 50 acres of old fruit and nut trees, re-leveling the land by installation of an underground concrete-pipe irrigation system.

Shell's scientific staff is working closely with university, federal, state and county agricultural authorities, it was reported. The announced intent is to provide a new type of long-range scientific service to contribute to the advancement of American agriculture.

The new research center is a co-ordinated activity of Shell Oil Co., Inc., Shell Chemical Corporation and Shell Development Company.

Locally the Shell Oil Co. is being represented by Roy Sunderland, who will erect a new station here soon.

Fines Assessed at Local Justice Court

For having in his possession at his home, parts of deer, Harry Hill was fined \$50 and costs at the Justice court last week.

James Edward Fielder, also, was assessed \$50 for the same offense.

Allen Fielder was fined \$50 for having deer meat in his possession.

John Jasper VanPelt was given a like fine for the same offense.

Charles Smotherman was fined \$50 for having in his possession deer meat.

J. Elwin Hart was arrested for driving with no PUC permit and for having a load for over-height on highway 101.

Marie Hempel was fined for having deer meat in her possession and for operating without a drivers license.

Favorite Recipe

Mrs. A. E. Stonehouse of Brookings submits her favorite recipe:

SOUR CREAM CAKE

- ½ cup cold water
- 1 cup sugar
- 2 eggs
- 1¼ cup flour
- Shortening—size of egg.
- ½ cup molasses
- 1 teaspoon soda dissolved in 3 teaspoons vinegar
- Little salt.

Cream sugar and shortening, add egg, mix vinegar and soda with molasses. Mix all ingredients. Bake at 300 degrees until done, according to tooth pick test.

FILLING

Boil two scant cups sugar and 1½ cups sour cream together, until thick. Beat, add 1¼ cups nuts.

Pine Cone Books Three Show Hits

Norris Kemp, of the Pine Cone theatre, announces in his advertising this week of the return of "Snow White and the Seven Dwarfs," Walt Disney's famous cartoon, taken from that fairy story so well liked by all children.

This picture, shown in many of the large cities over the nation, has broken box-office receipt sales each time that it has been returned. Some children, it is reported, have seen the picture as many as five times.

The town where Gen. Ike Eisenhower was reared, Abilene, will be the theme for the show Saturday and Sunday. For Wednesday and Thursday of next week, "Lady of Burlesque," starring Barbara Stanwyck, will come to the local screen.

Mrs. Wallace Voy has returned home after a couple of weeks vis-

Sell, Buy or Trade—In Pilot Classifieds

● "Custom Aire" Oil Heaters

This new model fills a long-felt need for a compact oil heater of adequate heating capacity. It combines modern design with advanced engineering. The moderate price makes it desirable to replace old inconvenient coal or wood heaters with this new attractive "Custom-Aire." Economical, controlled heat with the mere turn of a knob. It is 20x14 inches and 37½ inches high.

Ideal for heating three or four rooms or as an auxiliary heater where present equipment is inadequate. It is a dark brown ripple, with bronze-tone trim.

ATTRACTIVE APPEARANCE Harmonizes with other furniture
COMPACT—SAVES SPACE! Takes cold air from floor and heats it to desired temperature and circulates it to every corner of the room.

COZY RADIANT UNIT—has 11-inch heating drum.

LIFT COVER—provides additional radiant heat.

HANDY TOP LIGHTING—easy to light, no dirt or muss.

See these heaters at the shop of

J. J. Gallagher PLUMBING

Nook Cafe

If Your Wife Can't Cook—
Don't divorce her—both work in the lilies and
EAT AT THE NOOK!

Mrs. C. I. Patrick, Lessee

Don't "Fuel" Around—Get Your
Winter Wood From Us!

GREEN FIR

Slabwood

\$10.00 Per Load

—DELIVERED—

Brookings-Harbor Fuel Company
COFFMAN BROTHERS

Leave Orders at Brookings Mill, ½-mi. North.

LET ME Build it!

Millwork and Cabinet Shop

Door and Window Frames

FLUSH-TYPE INTERIOR DOORS—

CABINETS A SPECIALTY

We make special size sash, too!

MASON & EDWARDS
GENERAL CONTRACTORS

Box 157

Brookings, Oregon

ORCE'S MOLE KILLER

Get those moles which do so much damage

4-ounce can \$1.00

16-ounce can \$3.25

Sold Exclusively by

CHETCO STORE

Brookings, Oregon

BROOKS' HOME FOR SALE!

Consist of a 5-room house and over 5½ acres of Brookings finest bulb land on MEMORY ST. Known as Alderwood Lane, approximately 2 blocks south of Central Building. Water, gas and sewer available. Will sell, including trees, or put lilies on shares with buyers.

R. C. BROOKS

O. Box 34

Brookings