



### Eugene City Council Ward 1

**EMILY SEMPLE** vs. CHRIS WIG vs. JOSH SKOV vs. CHAD ANDERSON vs. KELLY BOYD

Unlike the plethora of unopposed positions on the city and county level, we're delighted that the downtown area has attracted a variety of candidates. We're going with Emily Semple, endorsed by George Brown, who is leaving the Ward 1 position, and Betty Taylor, a longtime progressive voice on the council, as well as former councilors Bonny (Bettman) McCornack and David Kelly. Josh Skov presents excellent environment credentials; Chris Wig has a strong labor background and political organizing experience. Semple, however, represents the heart and spirit of what makes downtown Eugene unique and the passion on issues such as the unhoused, transportation and land use that Brown represented during his tenure.

### Eugene City Council Ward 2

BETTY TAYLOR unopposed

### Eugene City Council Ward 7

CLAIRE SYRETT unopposed

### Eugene City Council Ward 8

CHRIS PRYOR unopposed

## NONPARTISAN LOCAL RACES

### District Attorney

**PATTY PERLOW** vs. CLAYTON TULLOS

This one is a no-brainer. In their only "debate" — one before the City Club of Eugene — District Attorney Perlow was so professional, so prepared and so convincing compared to Attorney Clayton Tullos that we wondered why he was running. Having recently opened a law practice, he likely is motivated in part by the need to put his name out there. As she said after the forum, she welcomed the chance to introduce herself to the community. Gov. Kate Brown appointed Perlow last July.



PHOTOGRAPHY BY TODD COOPER

## EUGENE WATER AND ELECTRIC BOARD

### EWEB Wards 1 & 8

STEVE MITAL unopposed

### EWEB Wards 2 & 3

DICK HELGESON unopposed

### EWEB Wards 6 & 7

**SONYA CARLSON** vs. GARY MALONE

Sonya Carlson gets our nod for the Eugene Water and Electric Board post representing city Wards 6 and 7. Commissioner James Manning's term is up, and rather than run for EWEB re-election, Manning is pursuing the Democratic nomination for House District 14. Manning's choice to replace him in this very important commission is Gary Malone, who has an extensive background in energy production and physical plant management. But we think Carlson's impressive academic record in energy sustainability, her organizational abilities and her skills of persuasion will help EWEB build stronger partnerships. EWEB must collaborate well with lawmakers, agencies and the Eugene community. Carlson thinks big but also appreciates the devilish details of managing our critical water and energy resources. She's someone to watch as she takes her first step to an elected position.

## MEASURES

### 20-239 Lane County — YES

Supporting 4-H and OSU Extension Programs in Lane County

The Extension service's programs include master gardener and food preservation and safety certification, and nutritional support for low-income families, just to name a few. It's not a lot of money and it goes to support 4-H and much needed agrarian programs.

### School Bond Measures — YES

20-240 SOUTH LANE SCHOOL DISTRICT #45J3, South Lane School bond to improve safety and school facilities

20-241 SIUSLAW SCHOOL DISTRICT #97J Bonds for new Construction, repairs and technology

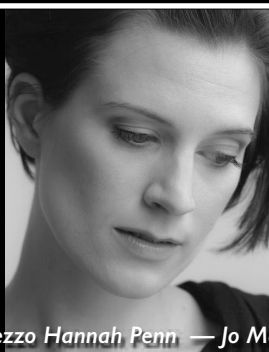
20-242 JUNCTION CITY SCHOOL DISTRICT #69 Bonds for replacement, safety, security, repairs and system upgrades

20-243 MAPLETON SCHOOL DISTRICT #32 School District bond to improve facilities, safety and security

Until Oregon gets its act together and starts funding our schools properly, then we are in favor of school districts raising money through deliberate local bond measures.

**EUGENE OPERA**

541-682-5000  
eugeneopera.com



Mezzo Hannah Penn — Jo March

Mark Adamo's

**LITTLE WOMEN**

The beloved classic by Louisa May Alcott is now a "magically transporting" opera.

**May 14 & 15**

7:30 pm Saturday  
2:30 pm Sunday

