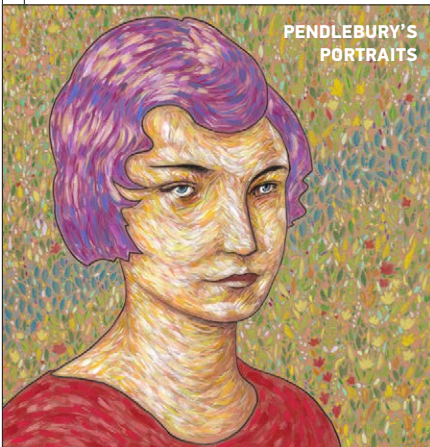


CONTENTS

MARCH 10-17, 2016

- 4 Letters
- 8 News
- 10 Slant
- 12 Change the World
- 16 Calendar
- 21** Visual Arts
- 22 Music
- 25 Backbeat
- 29 Theater
- 30 Dance
- 31 The Spin
- 31 Classifieds
- 35 Savage Love



PENDLEBURY'S PORTRAITS

WHO YOU GONNA BLAME?

EDITORIAL

EDITOR Ted Taylor
ASSOCIATE EDITOR Camilla Mortensen
ARTS EDITOR Alexandra V. Cipolle
SPECIAL ISSUES EDITOR Amy Schneider
CALENDAR EDITOR Ben Ricker
STAFF WRITER Rick Levin
CONTRIBUTING EDITOR Anita Johnson
CONTRIBUTING WRITERS Corinne Boyer, Brett Campbell, Rachael Carnes, Jerry Diethelm, Rachel Foster, Kayla Godowa-Tufti, Jeslyn Lemke, Anna Grace, Mark Harris, Sophia June, William Kennedy, Caitlin MacKenzie, Mary McCoy, Paul Neevel, Aaron Ragan-Foré, Sally Sheklow, Amanda Smith, Lance Sparks, J.D. Swerzenski, Molly Templeton, Andy Valentine, David Wagner, John Williams, Isabel Zacharias
INTERNS Mohammed Alkhadher, Kelsey Anne Rankin, Claire Rischiotto

ART DEPARTMENT

ART DIRECTOR/PRODUCTION MANAGER Todd Cooper
TECHNOLOGY/WEBMASTER James Bateman
GRAPHIC ARTISTS Trask Bedortha, Sarah Decker
CONTRIBUTING PHOTOGRAPHERS Paul Neevel
SOCIAL MEDIA Athena Delene

ADVERTISING

DIRECTOR OF ADVERTISING Rob Weiss
DISPLAY MARKETING CONSULTANTS Blake Aaron, Greg Butler, Lauriene Madrigal, Zach Toedter
CLASSIFIED MANAGER Maggie Pitcher

BUSINESS

BUSINESS MANAGER Paula Hoemann
CIRCULATION ASSISTANT Richard Hunt
DISTRIBUTORS Bob Becker, Pedaler's Express, James Kalafus, Trey Longstreth, Mike Goodwin, Quick Draw, Gwen Bailey, Bruce Smith, Katie Steinbach
PRINTING Signature Graphics

HOW TO REACH US BY E-MAIL

(editor): editor@eugeneweekly.com
 (letters): letters@eugeneweekly.com
 (advertising): ads@eugeneweekly.com
 (classifieds): classys@eugeneweekly.com
 (I saw you): isawyou@eugeneweekly.com
 (calendar listings): cal@eugeneweekly.com
 (music/clubs/special shows): music@eugeneweekly.com
 (art/openings/galleries): visualarts@eugeneweekly.com
 (performance/theater): performance@eugeneweekly.com
 (literary arts/readings): books@eugeneweekly.com
 (movies/film screenings): movies@eugeneweekly.com
 (circulation): circulation@eugeneweekly.com

EUGENE WEEKLY OFFICE

1251 LINCOLN ST. EUGENE, OR 97401
 541-484-0519 • FAX 541-484-4044

EW subscriptions: send name, address and check to 1251 Lincoln St., Eugene, OR 97401-3418.
 \$25/3 mos. \$45/6 mos. \$85/12 mos. Printed on recycled paper.
 Eugene Weekly is published every Thursday by What's Happening Inc.
 Application to mail at periodical postage rates is pending at Eugene, OR. Postmaster: Send address changes to Eugene Weekly, 1251 Lincoln St., Eugene, OR 97401-3418.
 ©2016 What's Happening Inc. All rights reserved.

Mid-Century & oh-so MODERN



Fab designs for the modern home

EDGEWATER

FURNITURE & MATTRESS

155 Division Ave, Eugene • 484-1962
 www.EDGEWATERFURNITURE.com

ATTENTION CANNABIS CONNOISSEURS

FACE OFF OG

- Highly sought after & rare pheno of og kush.
 - High comes on fast and strong.
 - Surreal dream-like experience.
 - Flavor profile blends sour to sweet with a kushy undertone.
 - Leaves the eyes low and the cheeks high with a grin
- THC 25.39% • CBD 0.07 %
 3B Analytical #33907 • Tested 3-1-16



Do not operate a vehicle or machinery under the influence of this drug. For use only by adults 21 years of age and older. Keep out of reach of children

3443 HILYARD ST. • EUGENE
 541-636-4100
 AMAZONORGANICS.NET Leafly

\$50 OFF

2015 RETURN WITH THIS COUPON*
 LONG OR SHORT FORM

*NEW CLIENTS ONLY

Applies to Federal & State and attachments.

Includes FREE electronic filing!

Offer only valid for service fee of \$160 or more.

Coupon good through Monday, April 4, 2016



ACCURATE BOOKKEEPING & TAX SERVICE

2757 RIVER RD.
 541-689-7071
 ABTSCORP.COM



EMGE & WHYTE

CERTIFIED PUBLIC ACCOUNTANTS
 Eugene D. Emge
 Pam Whyte
 Hilary Anthony

EXCELLENCE IN SERVICE
 tax & accounting professionals

Support Eugene Opera, Symphony, & Ballet!

2505 W. 11th Ave • Eugene, OR 97402 • 485-2100

SHOE-A-HOLIC

DRINKING GEAR GUIDE

VANS SK8-HI
 \$59.99



A CLOCK-WORK ORANGE TOTE
 \$19.99

BUFORD SUNGLASSES
 \$36.50



957 Willamette St • 541-687-0898

ALL NEW LOWER PRICES EVERYDAY... SAME HIGH QUALITY

THANK YOU EUGENE FOR ALLOWING US TO BE YOUR PREMIER DOWNTOWN DISPENSARY OF CHEMICAL-FREE, SOIL GROWN PRISTINE, FROSTY FLOWERS. ALL LOCAL BOUTIQUE GROWERS.

LONG'S PEAK BLUE



22.54% Terpenes
 19.54% THC \$35 1/8's

CRITICAL MASS



22.05% THC \$20 1/8's*

SNOW BUD



26.60% THC \$20 1/8's*

HEADBAND/PEACHY PIE



24.84% THC \$20 1/8's*

*while supplies last

NO TAXATION WITHOUT REPRESENTATION



Leafly weedmaps

114 W BROADWAY EUGENE, OR
 (CORNER OF OLIVE AND BROADWAY)



DO NOT OPERATE A VEHICLE OR MACHINERY UNDER THE INFLUENCE OF THIS DRUG • FOR USE ONLY BY ADULTS 21 YEARS OF AGE AND OLDER • KEEP OUT OF REACH OF CHILDREN