

CONTENTS

MAY 30-JUNE 6, 2013

- 4 Letters
- 8 News
- 10 Slant
- 12 Feature:
Degenerate Flame Off
- 14 Feature:
Kathleen Dean Moore
- 16 Calendar
- 21 Galleries
- 22 Artshound
- 23 Movies
- 24 Music
- 30 Outdoors
- 31 Classifieds
- 34 Personals



NW ANIMATION FEST

WHO YOU GONNA BLAME?

EDITORIAL

EDITOR Ted Taylor
ASSOC. EDITOR/REPORTER Camilla Mortensen
FEATURES & NEWS REPORTER Shannon Finnell
ARTS EDITOR Alexandra Notman
CALENDAR EDITOR Andy Valentine
CONTRIBUTING EDITOR Anita Johnson
CONTRIBUTING WRITERS Anne Bridgman, Brett Campbell, Rachael Carnes, Tony Corcoran, Rachel Foster, Kayla Godowa-Tuft, Anna Grace, Mark Harris, Natalie Horner, William Kennedy, Rick Levin, Brian Palmer, Ephraim Payne, Aaron Ragan-Fore, Vanessa Salvia, Sally Sheklow, Lance Sparks, Molly Templeton, Jackie Varriano, David Wagner, John Williams, Dante Zuñiga-West
INTERNS Nick Poust, Kevin Piskowski, Amy Schneider

ART DEPARTMENT

ART DIRECTOR/PRODUCTION MANAGER Todd Cooper
TECHNOLOGY/WEBMASTER James Bateman
GRAPHIC ARTISTS Trask Bedortha, Sarah Decker
CONTRIBUTING PHOTOGRAPHERS Paul Neevel, Rob Sydor
PHOTO INTERN Athena Delene

ADVERTISING

DISPLAY SALES MANAGER Mark Frisbee
NATIONAL SALES MANAGER Rob Weiss
DISPLAY MARKETING CONSULTANT Sharon Burnett, Michelle Naidoo
CLASSIFIED MANAGER Jayme Fuller
CLASSIFIED SALES Maggie Pitcher

BUSINESS

DIRECTOR OF SALES & MARKETING Bill Shreve
CIRCULATION MANAGER/CONTROLLER Paula Hoemann
DISTRIBUTORS Bob Becker, Mary Lee, Pedaler's Express, Susan And David Lawson, Richard Hunt, Mike Goodwin, Quick Draw, Gwen Bailey & Rodney Jim
PRINTING Signature Graphics

HOW TO REACH US BY E-MAIL

(editor): editor@eugeneweekly.com
 (letters): letters@eugeneweekly.com
 (advertising): ads@eugeneweekly.com
 (classifieds): class@eugeneweekly.com
 (personals): info@wink-kink.com
 (calendar listings): cal@eugeneweekly.com
 (music/clubs/special shows): music@eugeneweekly.com
 (art/openings/galleries): visualarts@eugeneweekly.com
 (performance/theater): performance@eugeneweekly.com
 (literary arts/readings): books@eugeneweekly.com
 (movies/film screenings): movies@eugeneweekly.com
 (circulation): circulation@eugeneweekly.com

EUGENE WEEKLY OFFICE

1251 LINCOLN ST. EUGENE, OR 97401
 541-484-0519 • FAX 541-484-4044

EW subscriptions: send name, address and check to
 1251 Lincoln St., Eugene, OR 97401-3418.

\$20/3 mos. \$40/6 mos. \$80/12 mos. Printed on recycled paper.
 Eugene Weekly is published every Thursday by What's Happening Inc. Application to mail at periodical postage rates is pending at Eugene, OR. Postmaster: Send address changes to Eugene Weekly, 1251 Lincoln St., Eugene, OR 97401-3418.

©2013 What's Happening Inc. All rights reserved.

OCT OREGON CONTEMPORARY THEATRE

boom



A Laugh-out-loud Comedy!

by Peter Sinn Nachtrieb

"Flips from pants-around-the-ankles comedy to hipster Twilight Zone takeoff... 'boom' is imaginative and easy to like." -The New Yorker

June 7 - 22nd

Matinee June 9

Previews June 5 & 6

Now in our new theatre!

194 West Broadway

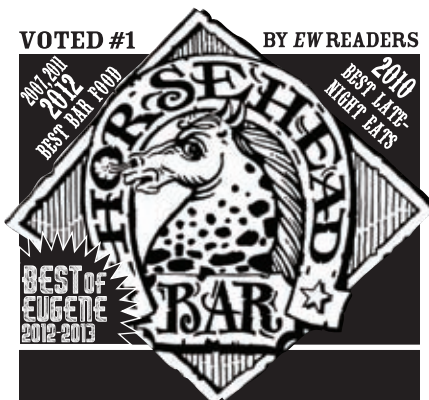
Tickets 541-465-1506

or octheatre.org

Production Sponsor:



Summer Camps Registering Now
 Shakespeare - Fractured Fairytales



SPARKING DOWNTOWN
 REVIVAL SINCE 2002

- ⊗ LOTS OF NINKASI
- ⊗ PATIO SEATING
- ⊗ DOWN HOME CHOW
- ⊗ WALL ART
- ⊗ PBR- CHEAP!
- ⊗ GOOD DRINKS
- ⊗ BUNCH OF POOL TABLES
- ⊗ VIDEO GAMES (NO POKER)

"GO EMERALD CITY ROLLER GIRLS!"

SCAN FOR OUR MENU



99 WEST BROADWAY
 541-683-3154

All Ecco® Sandals
 on Sale Now!

ECCO®



Yucatan Sandal
 Reg. \$140 **Sale \$124.97**
 Men's Sizes: 40-48
 Women's Sizes: 35-42
 Colors: Bison, Black

The ultimate in comfort.

Whether exploring Mayan ruins on the Yucatan Peninsula or the backyard with your kids, these ECCO sport sandals are designed to move you.

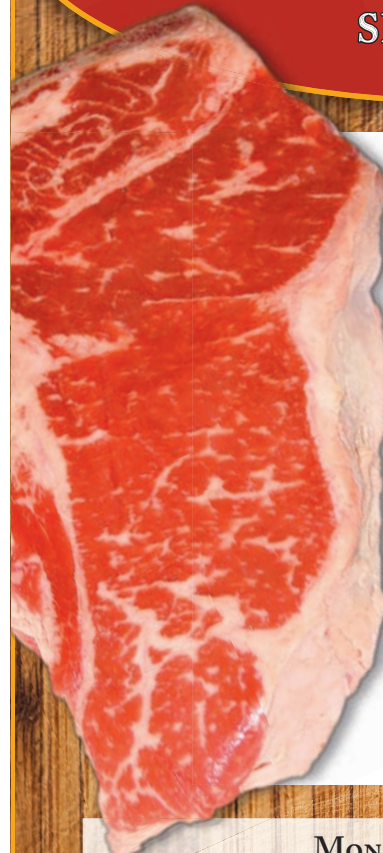
Sale ends June 8.



burch's

16 Oakway Center, Eugene, OR | 541.683.4115 | burchshoes.com

LONG'S
 MEAT MARKET
 SINCE 1927



A Vintage Eugene Meat Market
 HEALTHY, SUSTAINABLE &
 DELICIOUS MEAT PRODUCTS
 Local & Imported • Wines & Cheeses

TRY ONE OF OUR
MEAT PACKAGES
 GOLD • SILVER • BRONZE
 Halves, Wholes & Combinations

VISIT OUR WEBSITE OR
 COME IN FOR ENDLESS
 COMBINATIONS

MON. - SAT. 8AM - 6PM
 81 E. 28TH AVE (SOUTHTOWNE SHOPS) • 541.344.3172

LongsMeatMarket.com