

BROMPTON - the ultimate folder

- * Incredibly fast and easy to fold
- * Amazingly compact folded
- * Rear suspension for a comfortable ride
- * Custom configuration to suit the rider
- * A complete system - accessories for real daily use

SPECIAL -\$100 OFF for our first Brompton bike customer,
2nd customer -\$75 off, 3rd customer -\$50 off. special ends 01/01/2010.



ride ready



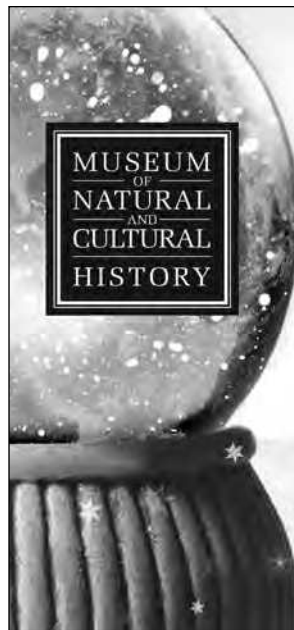
park



tiny for transport

PAUL'S BICYCLE WAY OF LIFE

2480 Alder & 152 W. 5th & 234 W. 6th & 3870 W. 11th



WINTER SOLSTICE CELEBRATION

FRIDAY, DECEMBER 18, 2009 · 5:00-8:00 p.m.

Storytelling, crafts, food, dance performances, and music. Follow the twinkling lights and bring your family and friends to celebrate at the museum this year!

Free admission with food donations for Food for Lane County.

Find a complete schedule of the events at natural-history.uoregon.edu or call (541) 346-3024.

1680 East 15th Avenue, Eugene

EO/AA/ADA institution committed to cultural diversity.



UNIVERSITY OF OREGON



Take a UO class! in 3 easy steps!

1. **Check** to make sure you're eligible.
2. **Apply** for a Personal Access Code (PAC).
3. **Register** for classes Monday, December 21.

Through the **Community Education Program (CEP)** you can take up to 8 credits (graduate or undergraduate) each term without formal admission.

Find details on tuition and eligibility at

<http://cep.uoregon.edu>

Winter classes start **Monday, January 4.**

See the Class Schedule at

<http://classes.uoregon.edu>



UNIVERSITY OF OREGON

(541) 346-5614 ■ cep@uoregon.edu

EO/AA/ADA institution committed to cultural diversity. © 2009 University of Oregon

DawnBaby
SALON

- ~ cuts
- ~ color
- ~ men
- ~ women

541-870-0561
1355 WILLAMETTE

INDOOR
FARMER'S MARKET

KNEE DEEP CATTLE
ANDERSON RANCH LAMB
FIVE-STAR POULTRY
LAUGHING STOCK EGGS
TAILS AND TROTTERS PORK

LONG'S
MEAT MARKET
EST. 1927

81 E. 28TH AVENUE
(SOUTHTOWNE SHOPPES)
344-3172
MON.-SAT. 8-6PM
WWW.LONGSMEATMARKET.COM