



Photo by Christine Bierman

Let it snow

The Sandy Fire District is ready for the next snow storm after a snow blade donated by Suburban Ford was recently mounted on a truck. Pictured with the unit are board secretary Jim Duff, Suburban Ford owner Jerry Jaksich,

and Sandy Fire Chief Gary Connelly. Duff arranged the donation of the \$3,000-plus blade, which will be used to clean driveways and pathways at the fire stations. The 7-foot-wide blade can be moved up and down, and sideways.

School lunches

Bull Run School Jan. 12-16

Monday: Burrito, green beans, bread and butter, sliced mandarin oranges and milk.

Tuesday: Lasagna, seasoned green beans, garlic bread, peaches and milk.

Wednesday: Baked beans and wieners, green salad, cinnamon bun and milk.

Thursday: Tacos, buttered corn, January birthday cake, ice cream and milk.

Friday: Vegetable beef soup, peanut butter sandwich, cookie, banana and chocolate milk.

Sandy

Monday: Wiener wraps, buttered corn, carrot sticks, sliced peaches and milk.

Tuesday: Chicken fried steak,

Tater Tots, fruited Jell-O, bread and butter and milk.

Wednesday: Pepperoni pizza, vegetable salad, pear halves and milk.

Thursday: Beef taco with lettuce and cheese, applesauce, bread and butter and milk.

Friday: Hot dog on a bun, french fries, orange wedges, peanut butter cookie and milk.

Welches School

Monday: Burrito with meat sauce, Mexi corn, pear half, sesame roll and milk.

Tuesday: Hamburger gravy, rice, carrot coins, fruit and cornmeal roll.

Wednesday: Sloppy joe, green beans, applesauce, cake and milk.

Thursday: Chicken, whipped sweet potato, fruit cocktail, roll and milk.

Friday: Tomato rice soup, tossed salad, fruit, tuna sandwich and milk.

Cooperative has openings

The Sandy Cooperative Preschool has openings in its class for 3-year-olds. The class meets on Tuesdays and Thursdays from 9 to 11:30 a.m.

Cost of the class is \$20 per month, and there is a \$30 registration fee. For more information, call Ruth Weber at 637-6523.

Boring Herb Society meeting

The Boring Herb Society will meet at 10 a.m. on Monday, Jan. 12 at the Boring Fire Hall, 28655 S.E. Highway 212.

The program will include the planning of herb activities for the new year.

INTRODUCING THE 1987 QUICK START PLUS PROGRAM

THIS IS THE YEAR YOU'RE REALLY GOING TO DO IT!

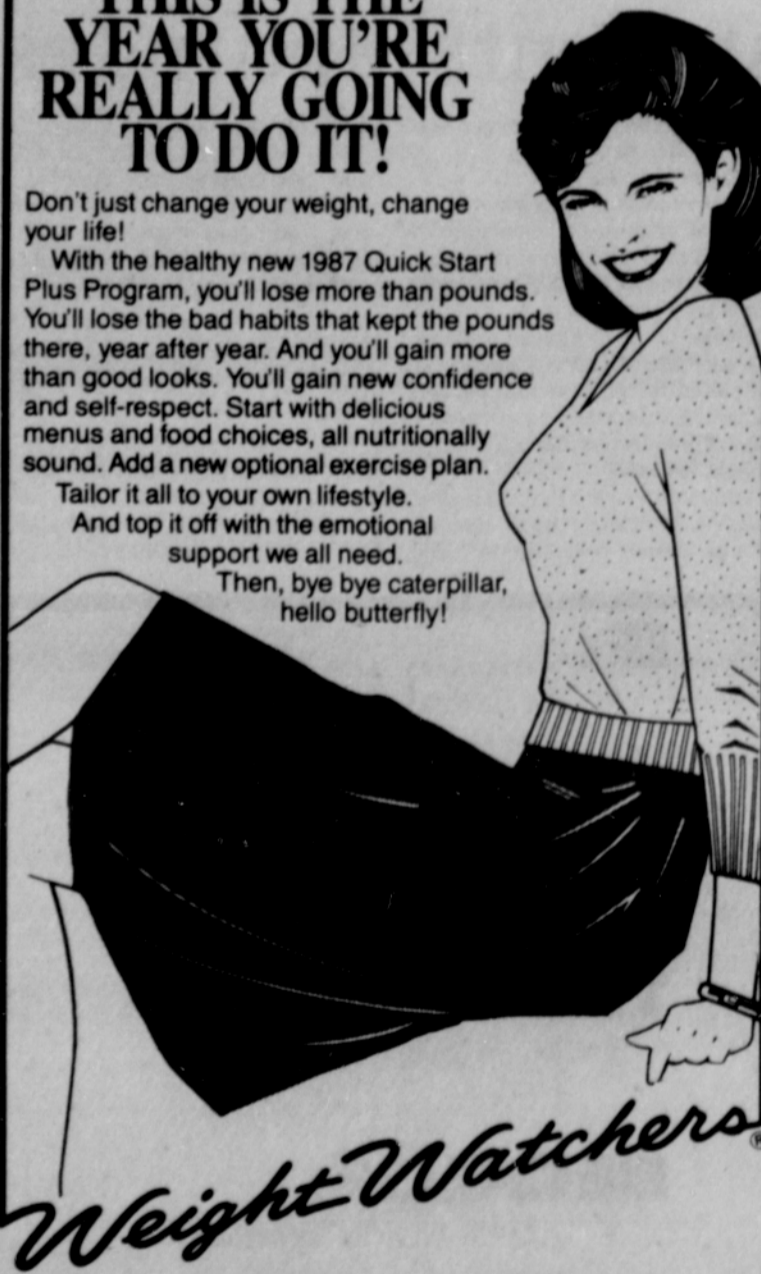
Don't just change your weight, change your life!

With the healthy new 1987 Quick Start Plus Program, you'll lose more than pounds. You'll lose the bad habits that kept the pounds there, year after year. And you'll gain more than good looks. You'll gain new confidence and self-respect. Start with delicious menus and food choices, all nutritionally sound. Add a new optional exercise plan.

Tailor it all to your own lifestyle.

And top it off with the emotional support we all need.

Then, bye bye caterpillar, hello butterfly!

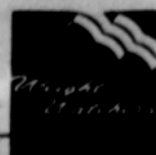


SANDY

TJ's Fireside Dining Restaurant
39024 Proctor Blvd.
Tues. 7:00 p.m.
(Temporary Location)

JOIN ANY CLASS ANYTIME

New and renewing members please arrive 20 min. earlier
For more information and additional class locations:
Call collect (503) 297-1021



Weight Watchers and Quick Start are registered trademarks of WEIGHT WATCHERS INTERNATIONAL, INC. ©1987 WEIGHT WATCHERS INTERNATIONAL, INC.

Local band sets schedule

Thomas and Marie Teven of T-Junction will perform at the Trap, 3805 S.E. 52nd Ave., from 9 p.m. to 2 a.m. on Fridays and Saturdays through January.

Marie Teven has lived in the Hoodland area off and on for 11 years. T-Junction plays country music, easy listening, and Scottish and Irish folk music.

Science teacher joins project

Walter Scott, a science teacher at Cedar Ridge middle school, has been selected by the Oregon Department of Education to represent Clackamas County on the Science Cadre Project.

The group will assess what is being taught at all grade levels in Oregon,

and then formulate guidelines for science curriculums.

"We feel it's an honor having someone who is good enough to be selected to the Science Cadre Project," said Rex Hunsaker, superintendent.

Toastmasters elect officers

The Sandy Toastmasters elected officers for 1987 at its December meeting. Bradford Cheney will serve as president.

Others elected were Kimberly Nelson, educational vice president;

Deane Wesselink, secretary-treasurer; and Terri Hanno, sergeant-at-arms.

The Sandy Toastmasters meets each Thursday at 7:15 a.m. in the basement of the U.S. National Bank.

Class of 1977 plans reunion

The Sandy High School class of 1977 is currently planning its 10-year reunion. People with ideas or who wish to get involved are asked to call Brad Paluck at 668-4181 or Chris Roth at 668-6225.

Sandy Business & Professional Directory 668-5548

CONCRETE READY MIX

MT. HOOD READY MIX

Ready Mix Concrete Crushed Rock, Sand and Gravel

668-6515

NURSE PRACTITIONER

"Wellness Is . . ."

Adolescent and Adult Health Care
Loraine M. Domine, R.N., M.S., A.N.P.

668-3511 • 24 hrs
38565 Proctor

PUMP SUPPLIES

\$4.76
a week

D & A PUMP & SUPPLY

• FAIRBANKS • MORSE •
• RED JACKET •
668-4902 or
1-655-7627
OREGON CITY

Come to Church

IMMANUEL LUTHERAN CHURCH

Worship 8:30 a.m.
Sunday School 9:30 a.m.
Bible Study 9:45 a.m.
Worship 11:00 a.m.

A Cordial Welcome Is Extended To All
PASTOR FRANK KOEPKE
668-6232 Church

CHAPEL OF THE HILLS

59151 E. Hwy. 26
SUNDAY

Bible Hour 9:45 a.m.
Morning Worship 11:00 a.m.
Evening Service 6:00 p.m.

ADULT BIBLE STUDY

Thursday 7 PM

Special Children's Hour
Sunday Morning
Pastor Mike Whisner
622-3097 or 622-4124

SANDY BAPTIST CHURCH

OUR SUNDAY SERVICES

Sunday School 9:45 a.m.
Morning Worship Service 11:00 a.m.
Children's Service 11:00 a.m.
Evening Adult Education 6:00 p.m.

well staffed nursery —
Awake — Wednesday — 7:00 p.m.

OTHER OPPORTUNITIES

* Aerobics • Gym Nights • Youth Groups • Counseling • Choir • Home Bible Studies
Pastor Fred Vogel
34495 S.E. Jarl Rd. • 668-4064
(Jarl Road is 1 mile west of Sandy)
Marketplace and 2.5 miles east of Heidi's

FELLOWSHIP BIBLE CHURCH

We emphasize Biblical teaching, supportive fellowship, children's learning center & regular home meetings.

MEETING
Sandy High School (Bluff Road)
Sunday mornings (9:30-11:30)



CHURCH OFFICE:
668-9123

SANDY CHURCH OF THE NAZARENE

Currently meeting at
17150 University Ave., Sandy
(Seventh-day Adventist Church)
Sunday School 9:45 a.m.
Morning Worship 11:00 a.m.
Evening Service 6:30 p.m.
Pastor Robert F. Scheifers
668-5712

LIVING WAY FELLOWSHIP FOURSQUARE

Discovery (Sun. School) 9:30 a.m.
Worship service 10:30 a.m.
Home Ministry Centers 6:00 p.m.
Call for more information
Pastor Ken Wold
17275 Strauss
668-8088
(Prayer Chain Available)

ORIENT DRIVE BAPTIST CHURCH S.B.C.

15150 S.E. Orient Drive
(First exit West of Sandy on Hwy. 26)

SUNDAY SCHOOL (all ages) 9:45 AM
WORSHIP 11:00 AM
TRAINING 5:30 PM
WORSHIP 6:30 PM
WEDNESDAY SERVICES (all ages) 7:00 PM
Children Ministries • Youth Ministries
Pastor Mike Holleman • Church 668-6083 • Home 668-6363

SANDY ASSEMBLY OF GOD SUNDAY SERVICES

Sunday School 9:45 a.m.
Morning Worship 10:45 a.m.
Evangelistic Service 6:00 p.m.

FAMILY NIGHT

Wednesday 7:00 p.m.
Dale Edwards, Pastor
Church Phone 668-5589

ST. MICHAEL'S CATHOLIC CHURCH

Saturday Eve. Mass 5:00 p.m.
Sunday Mass 10:00 and 12 Noon
St. John's Catholic Church
Welches Oregon
Mass 7 p.m. Sat. 8 a.m. Sunday
18090 SE Langensand
Sandy, Oregon
Father Rodrigues 668-4446

COMMUNITY PRESBYTERIAN CHURCH

Opening worship 9:30 a.m.
Sunday School 9:45 a.m.
Morning worship 11:00 a.m.
Home Bible Study 6:00 p.m.
Nursery Care During Worship
Pastor John H. Van Lierop
Home 668-6100
Church 668-4543
Corner of Meinig & Scenic Sandy

Mt. View Restaurant & Lounge



Welcomes You!

And Invites you
To Join Us For Dinner

Dining Room Specials

Served Fri. & Sat. 6pm to 9pm

Mt. View Restaurant & Lounge

COFFEE SHOP OPEN WEEK DAYS 6 am - 8 pm

Located on Mt. View Golf Course, 27195 Kelso Rd., Boring 663-5350

Worship at the Church of your choice