



The Sandy Post

Vol. 73 No. 2

SANDY, OREGON, THURSDAY, JANUARY 13, 1982

(USPS 481-180)

Single Copy 25¢

Mt. Hood snowpack average

Wet week affects river, not snowpack

by MICHAEL P. JONES
Post Correspondent

Monitoring on Mt. Hood by the U.S. Soil Conservation Service revealed last week's heavy rainfall had little effect on the mountain's snowpack. Further down the mountain, however, rising waters created some problems for road crews and motorists.

According to Stan Fox, assistant snow survey supervisor, Mt. Hood's snowpack is "just slightly above average." He said monitoring near Timberline Lodge and on the east side of the mountain showed the snow depth and water content is just 103 and 104 percent of the average.

This is approximately the same as last year, said Fox. "Mother Nature is still keeping water up there in the form of snow."

The U.S. Weather Service reported that 3.25 inches of rain fell at Portland International Airport during a seven-day period from Jan. 3 to Jan. 9—1.85 inches above the normal amount of precipitation for this time of year.

By comparison, Jack Baker, a Rhododendron resident who maintains a small weather station for his own use, said 12.15 inches of rain fell during the same seven-day period in that community at the 1,620-foot elevation level.

That was more rain than fell during the entire month of January last year at his site, he said.

Clinton Stiger, staff hydrologist for the U.S. Weather Service, said rivers in the Mt. Hood corridor area and elsewhere in Clackamas County rose. Heavy rains and early snowmelt swelled waterways and tributaries in the Sandy and Clackamas River basins, although few actually flooded.

Jack Schwahn, Clackamas County road maintenance supervisor for the Sandy-Mt. Hood area, said the Sandy River had an unusually high flow for this time of year. Stream measurements taken near Sleepy Hollow showed 8.8 feet of water. The average high-water flow for the river is between five and six feet.

Schwahn said some areas which experienced problems. He attributed this to the heavy rainfall, fill material used around roads and improper culverts.

Keisecker Road, southeast of Sandy, flooded with four to five inches of water covering the road—the result of a plugged culvert located in a natural drainage. County crews couldn't reach the problem due to "tremendous amount of water covering it," estimated at five feet deep.

On Aschoff Road, off Lolo Pass Road, 10 yards of road fill was washed away because of plugged culverts.

Over the weekend eight to 12 inches of water was flowing across Welches Road near Birdie Lane, Schwahn said.

Although Mt. Hood's snowpack is above average for this time of year, compared to elsewhere around the state it is low. In an estimated 195 other surveyed areas monitored by the SCS, snowpack ranged between a 117 to 400 percent.

Fox said snow monitoring is becoming very sophisticated. In the past SCS employees con-

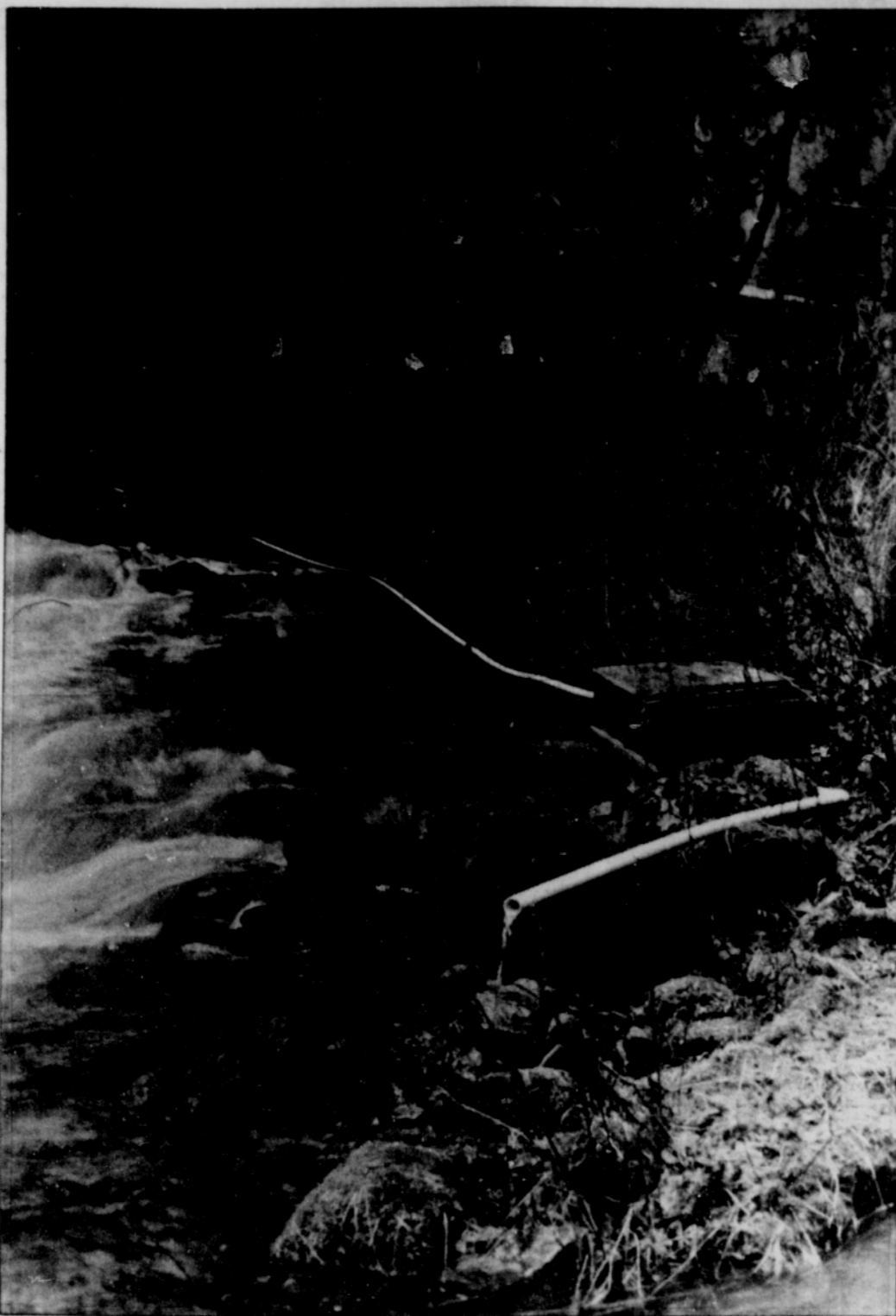


Photo by Michael P. Jones

Heavy rainfall and early snowmelt swelled rivers in the Sandy and Clackamas basins, causing some problems for road crews last week.

ducted the snow surveys on snowshoes. He said 10 samples are usually taken every 100 feet along a 1,000-foot "snow course."

Within five or six years, however, automated equipment will eliminate the monthly excursions into the mountains, during the winter season. One such device is being experimented

with now on Mt. Hood.

At the 5,400-foot level on the southern exposure of the mountain, just below Timberline Lodge, a "Snow-Tell" device has been placed. It measures water in the snow, total precipitation and air temperature, which aids in forecasting streamflows later on in the year.

Fuel can explosion severely burns man

An Alder Creek man remains in critical condition at Emanuel Hospital's Oregon Burn Center after he was severely burned in an accident Friday.

James Dasher, 36, 19605 E. Summertime Drive, was burned over 80 percent of his body when white gas he was using to light a barbecue ignited, dousing him with fuel. He was airlifted to the Portland hospital by Life Flight helicopter where officials said he suffered second-degree burns over the lower part of his torso and third-degree burns on his upper torso.

Neighbors said they heard an explosion shortly before 2:30 p.m. and saw Dasher run from his porch across the street to a neighbor's yard. The explosion of the can caused witnesses to believe the house was on fire as indicated in early reports to

Clackamas County emergency dispatchers.

Dasher was treated at the scene by emergency medical technicians from the Hoodland Fire District and Alpine Ambulance until the emergency helicopter arrived, landing for the pick-up on Highway 26 at Summertime Drive.

Dasher, an air traffic controller, has been unemployed since August 1981 but has kept busy with temporary jobs, Nancy Johnson told The Post. He and his wife, Sandy, have three daughters, ages 11, 13 and 15, who attend Sandy schools.

Johnson said a fund has been established to offset medical costs of the family. Contributions may be made to the James Dasher Fund, Clackamas County Bank, P.O. Box 38, Sandy.

Portland manufacturer relocates in Sandy

by DAN DILLON

The Sandy industrial base got a shot in the arm this week to kick off the new year with the announcement that a Portland manufacturer is moving into the former site of Timberline Trailers.

John Knapp, president of Bison Industries, said the firm will start moving into the Sandy Industrial Park site this week and hopes to complete relocation from its downtown Portland site by early next week.

The two-and-a-half-year-old company manufactures garbage collection equipment and has experienced 5 percent monthly growth, Knapp said.

"Our products are beginning to prove themselves capable and it's beginning to catch on for us," he noted.

Knapp said the company is currently in an 8,000-square-foot site and employs 13. He expects the number of employees to double in the next

year as Bison Industries grows into the 23,000-square-foot Sandy site.

The company distributes packer bodies and other refuse disposal equipment throughout the United States and to several foreign companies with just 3-4 percent of the company's sales in the Pacific Northwest.

"In spite of the recession, we've brought out some innovative waste disposal equipment. To develop some growth in this state of the economy is a pretty good sign," Knapp said.

He credited part of the company's growth to its looking at smaller, less expensive vehicles as alternatives to larger, costlier trucks.

The firm will sub-lease space at the Sandy site other businesses. The former owners of the building, North American Dry Kiln, have maintained offices in the building. A small body shop owned by John Kallen and a newspaper distributor are also tenants at the site.

Welches grads make grade, officials say

by MICHAEL P. JONES
Post Correspondent

Graduates of Welches School are faring well at Sandy Union High School and after they graduate, SUHS representatives said Thursday at an informational meeting to field questions from concerned residents of the Mt. Hood area.

The meeting, sponsored by the Hoodland Chamber of Commerce, drew some 40 persons to Rippling River Resort. On hand to explain the school district were Superintendent Jack Peters, principal John McMahan and members of the school board.

Responding to a question about Welches students' performance compared to students from other feeder districts, Peters said reading scores for current Welches graduates showed there were problems in September, however, problems with reading comprehension aren't limited to students from Welches. Rather, it is a problem in all the elementary schools, he said.

However, reading vocabulary was not a problem. Welches graduates tested "ninth grade, third month."

In mathematics, Peters said only four of 28 ninth-graders from Welches tested below grade level.

Ninth graders are tested when they arrive in September. The results are then sent to their elementary schools "so they can see how their students fared."

Peters said a question of whether or not the type of test given is the best "is not really germane," because "all the students take the same test under the same conditions." Thus, "they all have an equal disadvantage."

Last year, 17 former Welches students who are currently seniors, scored well in the California Achievement Test.

"They scored as well as or better than 62 percent of all juniors in high school in the nation, which I think is excellent," praised Peters.

In reading comprehension they scored in the 55.6 percentile, of the national scale. The language mechanics score was in the 52 percentile and the language expression was 58.6 percentile. Math computation, however, show-

ed a 47 percentile, which is low. As a result of these tests, Peters said SUHS is doing something "to boost the scores."

In the SAT scores, SUHS students tested number one among schools in the area and above the national average, said Peters.

Current seniors who came from Welches, up through their junior year, had a grade point average of 2.56, said Peters. They range from 1.32 to 3.88. That compares with June's graduates who attended Welches. Those students had an average G.P.A. of 2.34, with the range of 1.16 to 3.56.

SUHS board member Gary Cleland said a survey conducted in April 1981 of SUHS graduates who had attended Welches School showed that of 25, three were in the military, six were employed, 14 went on to college, one was in beauty school and one couldn't be located.

"My concerns certainly vanished after looking at 14 out of 25 going on to higher education," said Cleland.

Booklets boost drive to build museum

by DAN DILLON

A booklet tracing German settlers in western Oregon will be the next project of the Sandy Pioneer Association as it continues its push to establish a museum locally.

The group began its drive nine years ago with publication of "Sandy Pioneers, Early Settlers and Barlow Road Days," celebrating Sandy's centennial. Sales of the hardbound book led to a "considerable nest egg," according to association president Melvin Haneberg.

Now the association is quietly starting the push to raise approximately \$75,000 they estimate it would take to expand the Sandy Community Center to house the artifacts and history of the Sandy-Mt. Hood area.

First step will be the story of German settlers.

Along with the National Honor Society and a German class at Sandy High School, the Pioneer Association is working on a translation of a book written in the 1800s in German that deals with the early settlers.

"We hope to get a booklet out with

the parts of the books that pertain to this area," Haneberg said, referring to Washington, Multnomah, Clackamas, Hood River and Wasco counties.

"It should be of interest to history buffs and those who are descended from them," he said.

"If we mount a successful fund drive, then we'll take it to the city," he noted.

Haneberg noted that Charles Frasier, a local history buff, has published "small books with excerpts from other publications that

have gone over quite well."

More of that is also expected to help the fund-raising drive.

Miles Aubin, a longtime association member and student of the history of Boring, said the group also has several maps it would like to publish. He said the maps depict pioneer homesteads in the area and are of interest to newcomers interested in tracing the area's history.

The Pioneer Association will hold its quarterly meeting Sunday, Jan. 30, at 1 p.m. at the Sandy Community Center, Aubin noted.

Intensity pays off with SCP cabaret

by DAN DILLON

Planning a live theater production is intense.

But when pre-production work and rehearsals that usually span three months are condensed into two and a half weeks, the intensity multiplies, dramatically.

The Sandy Community Players open a cabaret performance, "Ger-shwin, Porter & Friends," this evening at Alton Collins Retreat Center that followed the latter time line.

That, said Tom Ten Eyck, is intensity. "I don't think we could have done it if we started from scratch." The Players adapted portions of their two recent revues, then added about 60 percent more new music—Rodgers and Hart, Jerome Kern and Duke Ellington.

With all the pressure, though, there are rewards. "When you're playing music, after a good gig or good performance you just feel high; you feel really good," he said. "It's very intense. I think I like that intensity. You can't worry about paying the light bill. You're in it."

In the case of the sold-out dinner cabaret, intensity meant arranging some 65 pieces of music, pairing them with the right singers to make their personalities compatible, and staging the production in an unfamiliar setting.

Steve Christensen arranged all the music and wrote musical charts for the five-member band to back the singers. "You have to give strong credit to Steve," Ten Eyck said. "He's just a great arranger." Even in his own musical development, Ten Eyck credits Christensen. "Steve's really pushed me along."

The condensed time line came about with the cancellation of "Star Spangled Girl." With an open date, the Players decided to go to their strength and produce a musical revue. Last summer's "I've Got Rhythm" played to more than 2,000 viewers.

Ten Eyck's experience with musical theater dates back to his days at the University of Montana where he was on the faculty of the Department of Foreign Languages and Humanities. Some people on the



Tom Ten Eyck

faculty felt a yen to put on a show, "so we started doing that for fun," he said.

His musical interests began much earlier. "I started when I was a little, tiny kid," he said, "about five. Interestingly enough, going through school, I never took any music. I

always did that on the side."

Six years ago, Tom and his wife, Katie, moved to the Sandy area and got caught up in the birth of SCP. For Tom, it was a return to his native area. Although he grew up in Portland, he spent every weekend in Sandy. Ten Eyck Road is named for his grandfather.

"It's incredible the amount of talent in this area, as anywhere, if you just open the door for it," he said.

The cabaret will present something new for the audience. The singers will bring their performance into the audience—a new twist that's taken the performers some getting used to.

"If you're sitting in the audience, you're right in it. You're surrounded by sound," Ten Eyck said.

The audience will reap the benefits of the cast and crew's burst of intensity in two 50-minute sets that highlight music from the Broadway stage in the 1920s, '30s and '40s.

"It's just fun," Ten Eyck concluded. "It's fun working together with somebody. It's not like building a boat in your basement. Your energies are all working to one goal."

Index

SECTION I

Lunch Menus	4
Senior Center News	2
Keeping Posted	4
Editorial, Opinion	6
Sports, Recreation	7

SECTION II

Classified Ads	Inside Tab
TV Revue	Inside Tab

WEATHER

Extended Forecast: Fair Thursday through Saturday with a chance of rain Sunday. Highs, mid 40s to mid 50s. Lows, 35 to 45.

Precipitation: January Total: 3.76 inches; 1.76 inches above normal.

1982 Total: 3.76 inches; 1.76 inches above normal.

Troutdale airport

	H	L	Pr.
Monday	58	40	45
Tuesday	55	31	0