

MEAT PRICES  
EFFECTIVE  
FEB. 24 THRU  
MAR. 2

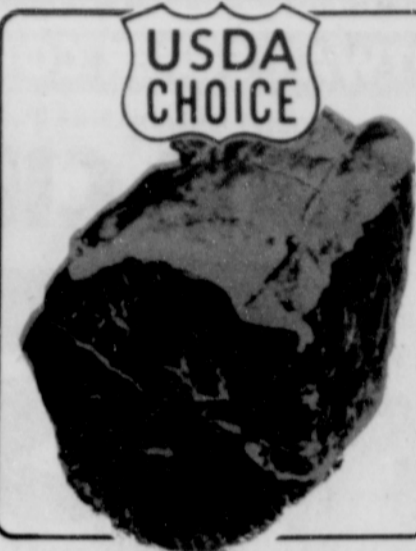
# GROUND BEEF

THRIFTWAY'S HIGH QUALITY  
REGULAR GRIND

NOT TO  
EXCEED  
30% FAT

LIMIT: 5 LBS.

**\$1.08**  
LB.



USDA  
CHOICE

BONELESS  
**RUMP  
ROAST**

USDA CHOICE BEEF

**\$2.18**  
LB.

**LEAN GROUND BEEF**

NOT TO EXCEED  
25% FAT CONTENT LB. **\$1.48**

McCOY  
**CORNERED BEEF** LB. **\$1.98**

USDA CHOICE BEEF  
**T-BONE STEAK** LB. **\$3.58**

FRESH  
**BOCKWURST** LB. **\$1.98**

YOUNG  
**BEEF LIVER** LB. **89¢**

BACON  
**ENDS & PIECES** LB. **89¢**

McANAMARA'S  
**CORNERED BEEF** LB. **\$1.78**

**SPECIAL  
PRICES  
ON ALL  
SEAFOOD**



**FRESH  
OYSTERS**

**FRESH BAKING  
CHICKENS**  
FRESH FROM  
FOSTER FARMS  
OF CALIFORNIA!  
LB. **68¢**



PACIFIC,  
MEDIUM

10 OZ. JAR

**\$1.48**

SEE our Seafoods  
Specials Page in  
The Oregonian

## THRIFTWAY'S SPRING CANNED FOOD SALE



WESTERN FAMILY

**APPLE  
SAUCE**  
16 OZ. TINS

**3 \$1**  
FOR  
NO LIMIT!

HALF  
CASE (12) ..... \$3.99  
FULL  
CASE (24) ..... \$7.95



WESTERN FAMILY  
**GREEN  
BEANS**  
CUT OR SLICED

HALF CASE (12) \$3.49  
FULL CASE (24) \$6.88

**3 88¢**  
16 oz.  
TINS  
NO LIMIT!



WESTERN FAMILY  
**GRAPEFRUIT  
JUICE**  
UNSWEETENED  
FROM FLORIDA  
46 OZ. TIN

**79¢**  
NO LIMIT!

HALF  
CASE (6) \$4.09  
FULL  
CASE (12) \$8.88

SENECA, NATURAL  
**APPLE  
SAUCE**  
1/2 CS. (6) \$4.49  
CASE (12) \$8.88  
24 OZ. **79¢**

TEXSUN, UNSWEETENED (46 oz.)  
**ORANGE JUICE** EA. **\$1.19**  
WESTERN FAMILY (32 oz.)  
**TOMATO CATSUP** EA.  
HALF CASE (6) \$7.99 FULL CASE (12) \$13.99

GREEN GIANT  
**NIBLETS  
CORN**  
12 oz.  
TINS **2 88¢**  
HALF CASE (12) ..... \$5.19  
FULL CASE (24) ..... \$9.99

HALVES OR SLICED  
**LADY  
ELBERTA**  
FREE-  
STONE  
PEACHES 29 oz. **88¢**  
HALF CASE (12) ..... \$10.29  
FULL CASE (24) ..... \$19.99

TEXSUN, PINK  
**GRAPEFRUIT  
JUICE**  
UNSWEET-  
ENED 46 oz. **99¢**  
HALF CASE (6) ..... \$5.89  
FULL CASE (12) ..... \$11.49

SANTIAM  
**GREEN  
BEANS**  
CUT OR  
SLICED 16 oz. **3 \$1**  
HALF CASE (12) ..... \$3.99  
FULL CASE (24) ..... \$7.95

SANTIAM  
**CORN**  
CREAM STYLE OR  
WHOLE KERNEL  
17 oz.  
TINS **2 \$1.00**  
HALF CASE (12) ..... \$5.89  
FULL CASE (24) ..... \$11.69

DEL MONTE (17 oz.)  
**FRUIT COCKTAIL**  
WESTERN FAMILY, SECTIONS (16 oz.)  
**GRAPEFRUIT**  
WESTERN FAMILY (20 oz.) JUICE PACK  
**PINEAPPLE** \* CHUNK  
\* SLICED  
\* CRUSHED  
WESTERN FAMILY (4 oz.)  
**MUSHROOMS** STEMS &  
PIECES **69¢** EA.  
HALF CASE (12) ..... \$7.89  
FULL CASE (24) ..... \$15.59

WESTERN FAMILY (29 oz.) YELLOW CLING  
**PEACHES** HALVES OR  
SLICED  
COTTAGE (29 oz.) BARTLETT  
**PEARS** MIXED PIECES  
KOUNTY KIST (10 1/2 oz.) CUT SPEARS  
**ASPARAGUS**  
WESTERN FAMILY, NEW ENGLAND  
**CLAM CHOWDER** 15 oz. **79¢** EA.  
HALF CASE (12) ..... \$8.88  
FULL CASE (24) ..... \$17.59

WESTERN FAMILY  
**APPLE JUICE**  
WESTERN FAMILY, APRICOT  
**NECTAR**  
WESTERN FAMILY, PINEAPPLE  
**JUICE**  
VEGETABLE JUICE  
**V-8 COCKTAIL** 46 oz. **99¢**  
HALF CASE (6) ..... \$5.89  
FULL CASE (12) ..... \$11.49

WESTERN FAMILY  
\* **FRUIT COCKTAIL** (16 oz.)  
WESTERN FAMILY  
\* **MANDARIN ORANGES** (11 oz.)  
DEL MONTE, JUICE PACK  
\* **PINEAPPLE** CHUNK, CRUSHED, TIDBITS  
OR SLICED, 15% OZ.  
WESTERN FAMILY  
\* **PEELED TOMATOES** (16 oz.)  
HOOD RIVER  
\* **PEARS IN JUICE** (16 oz.)  
HOOD RIVER, BARTLETT  
\* **PEAR HALVES** (16 oz.)  
VAN CAMP'S  
\* **PORK & BEANS** (21 oz.)  
**YOUR  
CHOICE 59¢**  
HALF CASE (12) ..... \$6.99  
FULL CASE (24) ..... \$13.99



OCEAN SPRAY REGULAR OR PINK  
**Grapefruit Juice**  
48 oz.  
BTL. **\$1.59** CASE OF  
(9) \$13.99

STEINFELD'S  
**SAUERKRAUT** (16 oz.)  
WESTERN FAMILY, FANCY  
**SPINACH** (15 oz.)  
WESTERN FAMILY  
**REFRIED BEANS** (16 oz.)  
WESTERN FAMILY  
**PORK & BEANS** (15 1/2 oz.)  
**2 88¢**  
FOR  
HALF CASE (12) ..... \$5.19  
FULL CASE (24) ..... \$9.99

CAMPBELL'S, 6 oz.  
**Tomato Juice**  
**\$1.09** HALF CASE (4) \$4.29  
FULL CASE (8) \$8.49

COTTAGE, SHORT CUT  
**Green Beans**  
**4 \$1** HALF CASE (12) \$2.99  
16 oz. TINS CASE OF (24) \$5.99

WESTERN FAMILY  
**Tomato Soup**  
**4 \$1** HALF CASE (24) \$5.99  
10 3/4 oz. TINS FULL CASE (48) \$11.99

"A PART OF YOUR COMMUNITY!"  
**THRIFTWAY**  
**WILLIAMS**  
17450 Meinig Ave., Sandy 668-4240  
Case prices effective Feb. 24 through Mar. 9  
(EXCEPT MEATS)