

around the county

Service district sets budget at \$7 million

The Clackamas Education Service District (ESD) budget for 1982-83 received unanimous approval from the ESD Budget Committee recently, passing one of the major hurdles on the way to final adoption, according to ESD Superintendent Bob Burns.

The general fund budget presented to the committee by the ESD is for \$7,523,704 with county property taxes providing \$6,601,970, according to Burns. He estimates the ESD tax rate will drop two cents from 92 cents per thousand dollars assessed value this year to 90 cents per thousand next year.

There are fourteen members of the ESD

Budget Committee. They include the seven elected members of the ESD Board of Directors plus seven county residents appointed for three-year terms. The committee's task is to review the ESD general fund budget each year to insure that it is "responsible and affordable."

"The budget we have prepared is sufficient to maintain programs at their current levels," according to Burns. "There are no new programs or personnel, and the total levy increase does not exceed the six percent increase allowed by statute."

He added that there are some items that deserve particular attention.

"Following the recommendations of a special review committee, the ESD Child Evaluation and Service Center will provide more direct student evaluations and less consulting service," Burns told the committee.

"Next year the ESD will apportion nearly \$2.8 million from the general fund to county school districts through the Handicapped Child Fund and the Regional Transportation Fund," he added.

He also stated that "A capital projects reserve of \$255,000 is included to replace some computer equipment and vehicles."

"This year the ESD has expanded its resolution for-

mat to include about eighty percent of the general fund budget," he said. "This will assure local districts a major voice in shaping the programs that serve them, and will enhance the educational partnership that we have developed in this county over the years."

Finally, Burns said, two other events of the past year "have impacted our budget in a major way."

The first-ever ESD levy election passed in March of 1981, establishing the ESD's financial structure through 1985.

In the organizational portion of the meeting, Greg Kauffman of Carus was elected committee chairman. Harold Wood of

Beavercreek was chosen vice-chairman.

Kauffman serves on the Canby Union High School board; Wood is Chairman of the Molalla Union High board.

The other five appointed members of the committee are: Mimi Urbigkeit from the West Linn School

board; Kathy Lowe from the Oregon City School board; James Redman from the North Clackamas School board; Gale Meier from the Boring School board, and June Rouston from the Redland School board.

ESD Board members on the committee are Board

Chairman Marvin Law from Milwaukie; Vice-Chairman Clayton Wills of Oregon City; Keith Lindahl of Milwaukie; Charles

Lucht from Molalla; Karen Lytle of Lake Oswego; Gary McLain from Milwaukie; and John Rowell of Sandy.

County assessor to speak

George Malin, Clackamas County assessor, will speak at the Boring Fire Hall (next to the post office) tonight from 8-9 p.m.

Malin will provide a brief summary of the function of the county assessor's of-

vice, and then will be available to answer questions.

The program is sponsored by the Clackamas County Republican Women's Club. A business meeting at 7:15.

IT'S INCOME TAX TIME
!!LET US PREPARE YOURS!!

During the tax season, our hours will be 8-5 Mon. thru Fri. Also open Tues. & Thurs. nights & all day Sat. by appt. We are equipped to handle all your tax problems.

39400 Pioneer, Sandy 668-8051
 In Cedar Plaza-No. 12, Lower Level

Allmain Tax Services

Lowest prices in town on meat,

ROUND STEAK

FULL CUT
USDA
CHOICE
BEEF

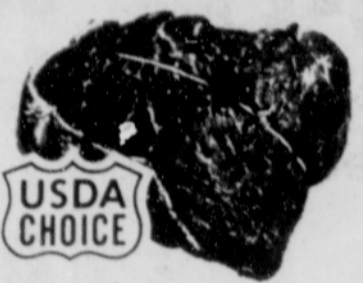


\$1.78
LB



CORN KING
1/2, WHOLE
**BONE-
LESS
HAM**

\$1.58
LB



USDA CHOICE
BONELESS
**BEEF
RUMP
ROAST**

\$2.18
LB

HAM ROAST Boneless Center Cut..... Lb. \$1.78	CUBE STEAK Beef..... Lb. \$2.48	MEAT PATTIES Armour Assorted..... Lb. \$1.68
TURKEY BREAST Richbrook 4-7 Lb. Avg..... Lb. \$1.38	ROUND STEAK USDA Choice Boneless "Top"..... Lb. \$2.38	SWISS CHEESE Jaarlsberg Imported..... Lb. \$2.98
PORK CHOPS Boneless Wilson..... Lb. \$2.98	TURKEY BREAST Rich's Smoke, BBQ, Oven..... Lb. \$2.98	FISH STICKS Ready To Heat & Serve Frozen..... Lb. \$1.18

WESTERN FAMILY, IN JUICE *Chunk *Crush *Slice Pineapple 8 OZ. 3/\$1
ERA LIQUID LAUNDRY Detergent 64 OZ. \$3.99
AUNT SUE 32 OZ. Raw Honey \$2.49
A-1 10 OZ. Steak Sauce \$1.59

GOLD-N-SOFT MARGARINE
 1 LB. TUB SOFT
58¢ EACH
 FIRST TWO

WESTERN FAMILY PAPER TOWELS
 GIANT SIZE ROLL
21¢ FOR
 FIRST TWO

KRAFT MACARONI & CHEESE
 7 1/2 OZ. DINNERS
31¢ FOR
 FIRST THREE

WE RESERVE THE RIGHT TO LIMIT THE PURCHASE OF SOME ITEMS.

Deli' Delights

BAR-S SLICED BACON VACUUM PACKED 12 OZ. 99¢
HYGRADE'S 16 OZ. BALL PARK FRANKS \$1.69
LAND-O-FROST 2 1/2 OZ ASSORTED THIN SLICED LUNCHEATS 2/97¢
HACIENDA CORN TORTILLAS 10 OZ 3/\$1

Dairy Specials

BANDON'S MEDIUM CHEDDAR 2 POUND LOAF \$4.89
KRAFT DELUXE SLICED CHEESE PROCESSED AMERICAN OR SWISS 12 OUNCE \$1.99
KRAFT CHUNK, 12 OZ. NATURAL, AGED SWISS CHEESE \$2.49
KRAFT CHILLED 32 OZ. ORANGE JUICE 99¢

Frozen Food Buys

WESTERN FAMILY WHIPPED TOPPING TWELVE OUNCE 69¢
WESTERN FAMILY GRAPE JUICE 12 OZ. 69¢
ORI-IDA 4 PACK COB CORN 5 OZ. CHICK TURKEY SWANSON PIES 2/\$1
VAN-DE-KAMP'S LIGHT & CRISP FISH FILLET 14 OZ. \$1.89
KUBLA KANN, CHICK., PORK FRIED RICE 10 OZ. 79¢

Beverage Features

RAINIER BEER "POUNDERS" 12 PACK, 16 OZ. PLUS DEPOSIT \$4.19
REG. DIET LIGHT PEPSI-COLA 8 PK. 16 OZ. Plus Dep. \$2.39
RHINESKELLER ROSE, CHIANTI, 3 LITER COLONY WINES \$5.89
REG. OR DIET 8 PACK 7-UP or SQUIRT 16 OZ. Plus Dep. \$2.39
SCHLITZ "The Bull" MALT LIQUOR 12 Pack 12 OZ. Plus Dep. \$5.19

ALL VEGETABLE CRISCO OIL
 24 OZ. BOTTLE
99¢ FIRST ONE

SENECA 46 OZ. Apple Sauce **\$1.29**

SKIPPY *Chunk *Creamy Peanut Butter 18 OZ **\$1.69**

NUMBER ONE RUSSET BAKING POTATOES 5 LBS. **\$1.129**

SUNNY DELIGHT 64 OZ. CITRUS PUNCH **\$1.29** EA.

LARGE PINK GRAPEFRUIT INDIAN RIVER 2 **88¢** FOR

CHOICE LEMONS RIPE & JUICY FOR **8 99¢**

MANDARIN ORANGES RIPE "ROYAL" LBS. **3 \$1.00**

ORANGES LARGE CHOICE NAVAL **4 99¢** LBS. FOR

Saver Shield Special
 BEST FOODS
 MAYO-NAISE
 32 OZ. JAR **69¢**
 With one filled Saver Shield Card 1 Offer Good Thru Feb. 2, 1982

Saver Shield Special
 WESTERN FAMILY
 WHITE SUGAR
 5 LB. Granulated **69¢**
 With one filled Saver Shield Card 2 Offer Good Thru Feb. 2, 1982

Saver Shield Special
 WESTERN FAMILY
 FRESH AA LARGE EGGS
 DOZEN **19¢**
 With one filled Saver Shield Card 3 Offer Good Thru Feb. 2, 1982

Saver Shield Special
 CHUN KING ASS'T'D.
 CHOW MEIN
 42 OZ. **\$1.39**
 With one filled Saver Shield Card 4 Offer Good Thru Feb. 2, 1982

Saver Shield Special
 PALMOLIVE
 DISH DETERGENT
 22 OZ. BTL. **39¢**
 With one filled Saver Shield Card 5 Offer Good Thru Feb. 2, 1982

Saver Shield Special
 MD
 BATH TISSUE
 4 ROLL PKG. **29¢**
 With one filled Saver Shield Card 6 Offer Good Thru Feb. 2, 1982

Saver Shield Special
 BETTY CROCKER ASS'T'D.
 HAMBURGER HELPER
 6-9 OZ. **9¢**
 With one filled Saver Shield Card 7 Offer Good Thru Feb. 2, 1982

Saver Shield Special
 WESTERN FAMILY
 HASH BROWNS
 2 LB. **1¢** SOUTH STYLE
 With one filled Saver Shield Card 8 Offer Good Thru Feb. 2, 1982

Saver Shield Special
 CRISCO
 SHORTENING
 3 LB. TIN **\$1.49**
 With one filled Saver Shield Card 9 Offer good thru Feb. 2, 1982

Saver Shield Special
 RICH'S
 TURKEY FRANKS
 1 LB. PKG. **49¢**
 With one filled Saver Shield Card 10 Offer Good Thru Feb. 2, 1982

WESTERN FAMILY Spaghetti LONG THIN **49¢**

39180 Pioneer in Sandy. 668-7418

SENTRY AD PRICES EFFECTIVE SEVEN FULL DAYS: JAN. 27TH THRU FEB. 2ND.

SANDY