

SUPER COUPON



CORONET Bath Tissue
ASSORTED PRINTS

FIRST 4 ROLL PKG.

58¢

WITH THIS COUPON AND MINIMUM \$10.00 PURCHASE ADDITIONAL 99¢
THRIFTWAY SUPER COUPONS MAY BE REDEEMED ONLY WHEN ACCOMPANIED BY A PURCHASE AMOUNTING TO \$10.00 OR MORE. ONE COUPON PER FAMILY GOOD THROUGH TUES., OCT. 16

THRIFTWAY

VALUABLE COUPON

WESTERN FAMILY **SHORTENING**
FIRST 3 LB. TIN



\$1.59

WITH THIS COUPON ADDITIONAL AT \$1.88
GOOD THRU TUES., OCT. 6 CASH VALUE 1/20 OF 1¢

THRIFTWAY

VALUABLE COUPON

SUNRISE INSTANT **COFFEE**
FIRST 8 OZ. JAR



\$2.88

WITH THIS COUPON ADDITIONAL AT \$3.49
GOOD THRU TUES., OCT. 6 CASH VALUE 1/20 OF 1¢

THRIFTWAY

VALUABLE COUPON

MRS. BUTTERWORTH'S **SYRUP**
FIRST 24 OZ. BTL.



\$1.29

WITH THIS COUPON ADDITIONAL AT \$1.49
GOOD THRU TUES., OCT. 6 CASH VALUE 51/20 OF 1¢

THRIFTWAY

VALUABLE COUPON

HOLIDAY 'INDOOR' **FOGGER**
FIRST 6 OZ. TIN



\$1.88

WITH THIS COUPON ADDITIONAL AT \$1.99
GOOD THRU TUES., OCT. 6 CASH VALUE 1/20 OF 1¢

THRIFTWAY

VALUABLE COUPON

MJB **RICE MIXES**
ALL VARIETIES EXCEPT WILD FIRST TWO 6 OZ. PKGS.



\$2.88

WITH THIS COUPON ADDITIONAL AT 3/\$1.00
GOOD THRU TUES., OCT. 6 CASH VALUE 1/20 OF 1¢

THRIFTWAY

BANQUET, PRE-COOKED

FRIED CHICKEN

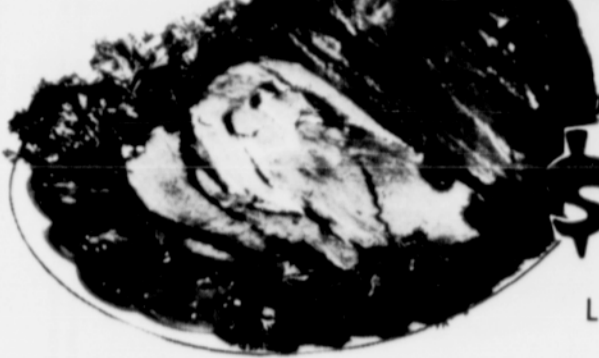
2 LB. PKG. **\$2.59**

SENECA **APPLE JUICE**

16 OZ. TIN **98¢**

THRIFTWAY FEATURES STRICTLY USDA CHOICE BEEF

BONELESS CHUCK ROAST



U.S.D.A. CHOICE BEEF

\$1.68
LB.

TURKEY WIENERS



JENNIE-O BRAND FIRST TWO 12 OZ. PKGS.

49¢
LB.

BEEF FOR STEW BONELESS CUBED **\$1.98** LB.

SHENSON'S **CORNERED BEEF**

MILD OR OLD FASHIONED **\$1.98** LB.

BONELESS CHUCK STEAK U.S.D.A. CHOICE BEEF **\$1.98** LB.

LEAN GROUND BEEF NOT TO EXCEED 25% FAT **\$1.68** LB.

HYGRADE SLICED **LUNCH MEATS** ASST. D. VARIETIES **\$1.18**

LAND O FROST **SMOKED MEATS** WAFER SLICED ASSORTED **2.89¢** 7 1/2 OZ. PKG.

CORN KING **BRAUN-SCHWEIGER** **98¢**

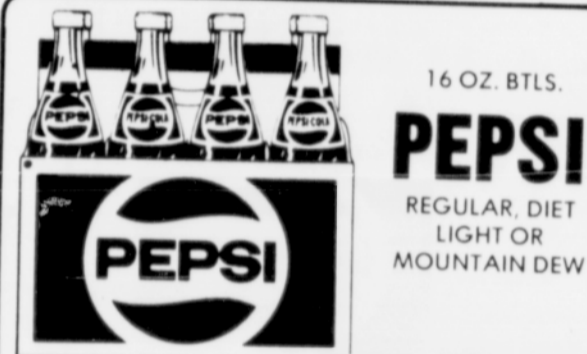
RESERS **SAUSAGE CHUBS** **\$1.98**

WILSON "CERTIFIED" **SLICED BACON** **\$1.29**



GREGG'S **GOLD 'N' SOFT** SOFT MARGARINE

58¢
FIRST TWO 1 LB. TUBS EA. ADDITIONAL AT 69¢



16 OZ. BTLs. **PEPSI** REGULAR, DIET LIGHT OR MOUNTAIN DEW

\$1.99
EIGHT PACK PLUS DEPOSIT



ALL PURPOSE **GOLD MEDAL FLOUR** REG. OR UNBLEACHED

\$1.48
FIRST 10 LB. BAG ADDITIONAL AT \$1.88

HEALTH & BEAUTY AIDS

Crest TOOTHPASTE 6.4 OZ. REGULAR, MINT, GEL **\$1.48**

PAIN RELIEVER BUFFERIN TABLETS 60's **\$1.98**

GILLETTE FOAMY SHAVE CREAM Regular, Lemon Lime or Coconut 11 OZ. **\$1.99**

VISINE EYE DROPS 1/2 OZ. **\$1.69**

ALKA SELTZER PLUS COLD MEDICINE 36's **\$2.69**

BEVERAGE CELLAR

THE BEER HERE **BLITZ** 12 OZ. CANS 12 PKG. PLUS DEPOSIT **\$3.99**

INGLENOOK VINTAGE **DINNER WINES** Cabernet Rose, Chablis, Rhine or Burgundy 1.5 LT. **\$4.99**

KELLER GEISTER **GERMAN WINE** 750 ML. **\$2.69**

SCHLITZ **MALT LIQUOR** 12 OZ. CANS SIX PACK **\$2.69**

AVAILABLE AT MOST THRIFTWAY STORES

PREMIUM CRACKERS NABISCO SALTINE 1 LB. **89¢**

WISHBONE **ITALIAN DRESSING** 16 OZ. **\$1.49**

YELLOW OR GREEN **IRISH SPRING** DEODORANT BAR SOAP PKG. OF TWO 5 OZ. BARS **99¢**

CRUNCHOLA **GRANOLA** HONEY GRAHAM OR HONEY NUT 10 OZ. **\$1.39**

MORE MONEY SAVERS

BLUE MOUNTAIN **DOG FOOD** INSTANT MIX OR BRAISED CHUNKS 50 LB. BAG **\$10.99**

WESTERN FAMILY **APPLE CIDER** HALF GAL. **\$1.59**

BETTY CROCKER TUNA OR 'BURGER HELPERS 6 1/2 TO 8 OZ. **99¢**

NALLEY'S **DILL PICKLES** Baby Banquet, Genuine or Kosher 46 OZ. **\$1.49**

IVORY **LIQUID DETERGENT** 22 OZ. **\$1.39**

"WE CARE MORE... WE OWN OUR STORE"

THRIFTWAY

WILLIAMS THRIFTWAY, 17450 Meinig Ave., Sandy 668-4240
HOODLAND, Welches Rd., Wemme 622-3244
Prices effective Wed. thru Tues., Sept. 30 - Oct. 6

THRIFTWAY'S FALL FROZEN FOOD FESTIVAL

WESTERN FAMILY OR SUNKIST **ORANGE JUICE** FIRST TWO 12 OZ. TINS

78¢
EA. ADDITIONAL AT 89¢

AUNT JEMIMA **WAFFLES**

• BLUEBERRY
• COUNTRY
• BUTTERMILK

2 10 OZ. PKGS. **\$1.19**

COTTAGE **VEGETABLES**

CORN, MIXED VEGETABLES, PEAS OR PEAS & CARROTS 20 OZ. PKG.

59¢