

## inside the church

### Musical program set by local Kaffee Klatsch

"Sing a New Song" with Phil Christianson and Mike Whisner at Sandy Kaffee Klatsch this Monday evening, March 23, at the Sandy Community Center at 7:30 p.m. This Kaffee Klatsch has been planned especially for women, men and high school kids, according to Edna Cooke, chairman.

"I first met Phil and Mike several years ago when they attended Sandy High School," Cooke said. "Phil was raised in a Christian home and after high school he decided to test his parents' values and teachings by choosing a new direction in his life."

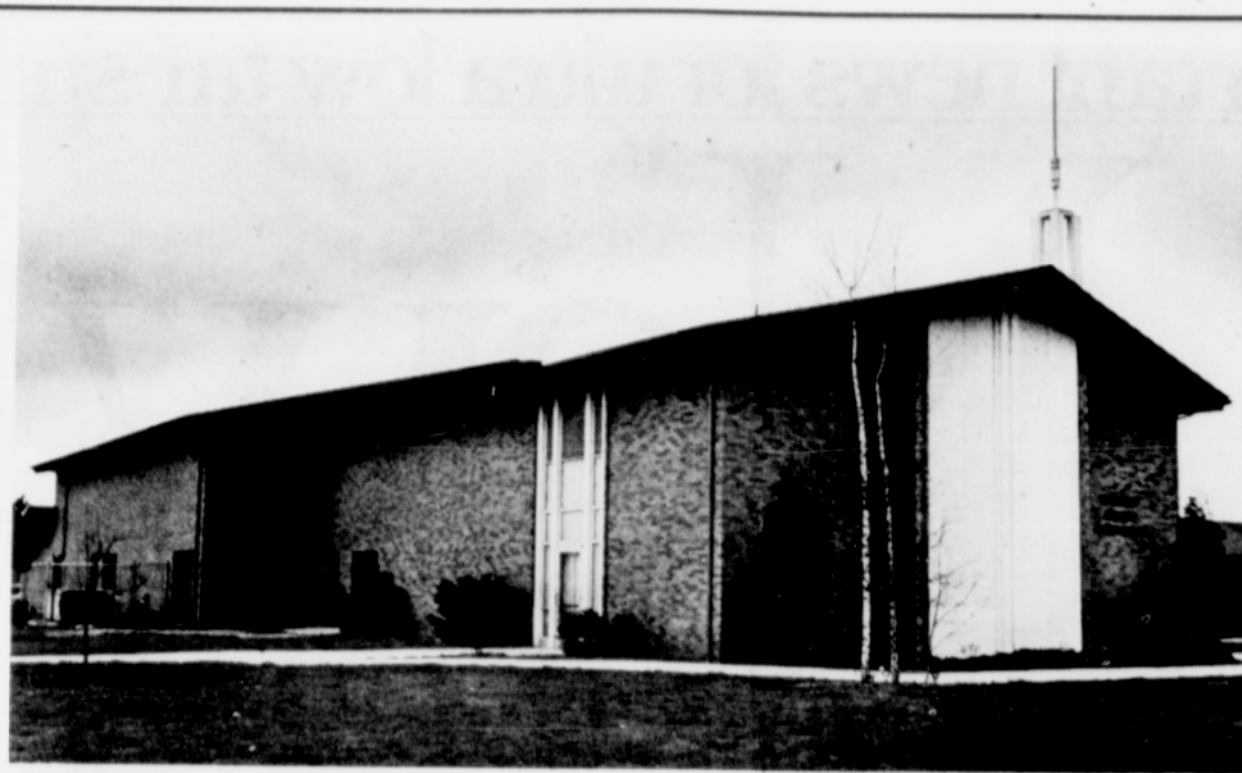
"After several years of searching for answers and experiencing things the world offers, at which time he played professionally in a night club band, Phil found the answer to life's perplex-

ing questions," she continued.

"Mike, on the other hand, spent most of his formative growing-up years in a foster home," she said. "After high school he chose Prairie Bible Institute in Canada to continue his education. When he returned to the Hoodland area, he became involved with young people at a local church where he is now youth director, sharing with them the answers he's found to life's questions."

Christianson wrote many of the songs the two will sing. His songs and music reflect the honesty and sincerity of his search to find meaning and truth in life, Cooke said.

Kaffee Klatsch begins at 7:30 p.m. and ends at 9:30 p.m. The public is invited at this "Men's Night at Sandy Kaffee Klatsch."



The Church of Jesus Christ of Latter-day Saints will host an open house March 27 to show the community the recent addition to its Bluff Road church. Photo by Dan Dillon

### New LDS church greets crowd

Five years ago the Church of Jesus Christ of Latter-day Saints built a new home for its Sandy ward. At the time, local membership was 250.

By 1980 the church's membership had grown to just under 700 and the building committee at church headquarters in Salt Lake City gave the local ward the go-ahead to make an addition to its facility at 16317 S.E. Bluff Road.

The new 8,078-square-foot addition more than doubled the size of the church and features a "cultural hall" or gymnasium, stage, kitchen, and meeting and classrooms.

Now the members of the ward would like to show their new facility to Sandy residents at an open house next Friday, March 27, from 7:30 to 9 p.m.

Because the church tries to stress the total development of the individual, the new addition reflects that goal.

"We feel very keenly about physical development," said Raymond Gifford, bishop of the ward. Hence, the cultural hall was built for basketball and volleyball.

In fact, Gifford said, the Mormon Church once had the largest organized basketball league in the world.

The gymnasium will get a real workout every Wednesday evening when the teenagers of the church meet. The boys use it for basketball and small plays may be staged on the adjacent stage from time to time.

But along with the activities in the cultural hall, the rest of the facility will be busy.

The church is one of the largest sponsors of Boy Scouting in the United States. "We'd like all our boys to reach Eagle Scout," Gifford said. The boys also participate in career development classes in the classrooms and meeting rooms.

The girls use the meeting rooms

for classes on homemaking skills, self-esteem and planning goals.

The new addition will also find a great deal of use with monthly ward dinners.

A new library, formerly sharing space with the kitchen, is stocked with audio-visual materials which church members may check out for Monday evening family nights to help teach family members about the religion. "We feel keenly about developing teaching abilities," Gifford said. "There is no greater call."

That teaching desire will be reflected in the open house. According to the organizer, there will be displays on genealogy, family preparedness and food and water storage. Each auxiliary of the church will have a display.

"Virtually every room in the building will have a display," Gifford said. "If anyone wants to ask questions, there'll be someone here to answer them."

### Aglow past president Wemme guest Tuesday

The Hoodland Women's Aglow Fellowship will welcome a Portland woman this Tuesday, March 24, as guest speaker at its monthly meeting at the Red Lion Inn at Bowman's, just off Highway 26 on Welches Road.

Frances Woods of Portland is the mother of six children and a former Aglow president. She speaks at many Aglow retreats and

meetings and attends East Hill Church in Gresham.

Reservations for the 11:30 a.m. luncheon meeting are necessary by this Saturday, March 21. For reservations, call 622-4526 in Hoodland, 668-4972 or 668-4088 in Sandy, and 630-4726 in Estacada.

Babysitting is available and mothers are asked to bring a sack lunch for their child.

### Evangelist slated here

Evangelist Buford Woodard will preach in a Revival at Orient Drive Baptist Church, 15150 S.E. Orient Drive, Boring.

The revival services will

begin Sunday, March 29, at 11 a.m. and continue each evening at 7 p.m. through April 5.

The public is invited.

### Sandy Baptist to host traveled musical duo



Jeff and Gloria Emmrich

Sandy Baptist Church will feature Jeff and Gloria Emmrich this Sunday morning, March 22, during the 11 a.m. worship service.

The Emmrichs are well known around the world for their "unique musical expression of Christian living"

as they have travelled to Haiti, New Zealand, Australia, Hawaii and Europe in their ministry.

The public is invited to share this musical event at the Sandy Baptist Church, 34435 S.E. Jarl Road.

### Local Bike-a-thon set April 4

Hot dogs and snow cones will be available at the April 4 "Bike-a-thon. Sandy Lions Club has volunteered its lunchwagon and T.J.'s Fireside Dining, the hot dogs. Free soft drinks will also be available.

Bob Rykker has also joined the committee to recruit riders from Boring and Damascus, and has made arrangements with the Boring Fire Department to be on hand if first aid is needed.

During the coming weeks, riders will be asking area residents to back their efforts by pledging a contribution for each mile they ride. There is a 20-mile maximum. Wheels For Life chairman Anita Tinjum said the sponsors would be asked for their pledge only when the ride is completed and the rider's distance has been verified.

Each rider will be given a lap card when they register at Mountain Shadow subdivision, near Kelso School, Tinjum said. "Everytime they ride through the checkpoints, we'll initial the card. At the end of the ride, we'll check it and sign it to show that the rider has earned what the sponsor pledged," she said.

Riders will then return to the sponsors to collect the

pledges. "The money our riders earn will help continue St. Jude's lifesaving research that has become important to children all over the world," Tinjum said.

"We'll be showing that we care about children by helping this cause," she said. "Please, support your rider with a generous tax-deductible pledge, and then

help them get the funds to us within 10 days after the ride is over."

The ride starts at the corner of Eklund and Leanne Roads at 9 a.m. and will be one-half mile from checkpoint to checkpoint. The course has been set up to allow riders an opportunity

to rest without feeling they have fallen behind the other

riders. It will also prevent competitive speed riding that can result in accidents and injuries.

Riders can pick up their sponsor-registration forms at Reliable Realty in Sandy, the Boring Fire Department or the Gresham Outlook, or call Anita, 668-6043 or 668-7481, or Bob, 663-4638 or 658-3728.

## SPRING SPECIAL

at Sandy Taco Time!

### Free pkg. of Flower Seeds!

with every order....

Offer good Thurs., March 19 Thru Sat., March 21st at Sandy store only!

17475 Beers

SANDY

Phone 668-7872



The Sandy Post  
To place a church notice  
Call The Sandy Post 668-5548

# CASHING CHECKS IS HASSLE FREE

# WITH YOUR IBS CHECK GUARANTEE.



**IF** cashing a check Gives your patience a test Relax! We have something To give you a rest

Our Check Guarantee Card is the same As 5 credit cards, fingerprints And your Grandmother's maiden name

At the Independent Bank We know what you need That's why personal checks To \$100, are guaranteed

Stop by and apply For your card today And treat yourself to check cashing

The quick and easy way!



The Independent Bank of Sandy  
38561 Proctor Blvd. / Sandy, OR 97055 / 668-8030

"Just Because"



Sale!

30% OFF EVERYTHING!

· Winter Clothes · Accessories  
· New Summer Clothes · Sleepwear  
· Even 30% OFF Sale Rack!

3 HOURS ONLY 7:00 P.M. to 10 P.M.

Friday, March 20th