



REDUCED \$6,000'

SANDY AREA 4 bdrm, 2 1/2 bath, 3.11 acres. Large shop with lift. Contract or assume. \$103,950. 760-4110 eves. 658-2196.

ASSUME MORTGAGE

LOW INTEREST rate. \$89,950. 3 bdrm, 2 1/2 bath. Formal dining or eat in kitchen. Family rm. 760-4110 eves. 760-2378.



Stagens

E.G. Stagens Inc. Realtors
14815 S.E. Division, Portland
760-4110



SMART START
NICE 1978 CONCORD MOBILE HOME in Beautiful secluded park like Adult Court. 2 Bdrm, 1 1/2 Bath, Living Rm, Dining Rm, Kitchen, Utility. Check today. \$28,900.

GENTLEMEN'S FARM — Just like new 3 BR ranch with 1828 sq. ft., 2 baths, heatolator fireplace, 30 X 55 garage with work benches and wired for 220. RV hook up with drain field, 45 X 63 barn wired for 220, fenced and cross fenced, nearly 9 beautiful acres. \$185,000.00 submit your offer.

ONE OF GRESHAM'S FINEST — Contemporary 2 story home, 2400 sq. ft., 3 BR's, master BR has private deck, bath with double sinks, double sunken tub & double shower, sunken LR with fireplace, FR, vaulted ceilings, 2 eating areas, huge deck surrounded by trees for lots of privacy. \$119,850.00 Possible contract.

MARCUS REALTY, INC.
1450 S.E. Orient Dr.
Gresham, Ore.
667-1200



FANTASTIC ASSUMPTION!
Gorgeous four bedroom ranch in mint condition inside and out. Approximately 1700 square feet of deluxe living features separate family room, spacious living room with brick masonry fireplace, large dining area beautiful decorator paper throughout. Lovely landscaped lot borders on 17 acre common area. Two metal storage sheds are included, and best of all there is an assumable loan at 8 3/4% interest. Located on a quiet cul de sac. 659-4530 eves. 654-2552.

Beth Hart Realty



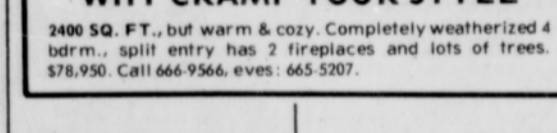
TROUTDALE CAPE COD
5 BDRM., 2 bath older home in excellent condition. Full basement, beveled glass, built-in hutch, 2 side porches, carport & garage. Huge lot. \$85,000. Call 666-9566, eves: 665-3535.

POOL PLUS VIEW
ENTERTAIN INSIDE or out. You can see for miles from deck. 4 bdrms., 2 fireplaces, woodstove, 2 family rms. Approx. 3000 sq. ft. Contract terms, quick possession. \$135,000. Call 666-9566, eves: 665-2661.

FAMILY STARTER
14x70 FRONTIER w-expanded living rm. 2 bdrms., woodstove, built-in appliances in step saving kitchen. Situated in Boring. \$17,950. Call 666-9566, eves: 663-3412.

TRI-LEVEL ON HUGE LOT
PRACTICAL 9 LOVELY new home has 3 bdrms., 2 baths, family rm. Fireplace in sunken living rm., 2 dining areas, work-saver kitchen. Excellent terms. \$67,400. Call 666-9566, eves: 666-6175.

WHY CRAMP YOUR STYLE
2400 SQ. FT., but warm & cozy. Completely weatherized 4 bdrm., split entry has 2 fireplaces and lots of trees. \$78,950. Call 666-9566, eves: 665-5207.



KINGSWAY
ADULTS ONLY
\$39,950 CONDO, 2 bedrooms, garage and all built-in appliances. Walking distance to shopping. It doesn't take much to assume a 6 1/2 percent annual percentage rate. Call 661-4400

SUMMERSVIEW
NEW HOMES located in Reynolds area with easy access to I-84-N. Ranches from \$63,950 and Splits from \$72,950. Call 661-4400. CONTRACT POSSIBILITIES.

SMELL THE NEWNESS
SPLIT ENTRY with 2600 finished sq. ft., 4 bedrooms, 3 baths, huge family room with wood burning stove, 12x54 deck across back, on treed lot. \$79,900. Call 661-4400 eves. 666-4400.

LOW INTEREST
ASSUMPTION!!! 3 bdrm ranch in David Douglas area. Fireplace & woodstove. Large Family room Fenced yard covered patio. To see call 760-6400 Eves. 252-1312

ADULT CONDOMINIUM
THIS 1700 sq. ft. condo with view is ideal for adult living. 3 bdrm, 3 full baths w-w carpeting, fireplace, family room, deck, patio, double car garage, pool and recreation facilities. Asking \$82,950. Call 760-6400, Eves 255-5736.

DON'T BE FOOLED!
LOVELY 3 bdrm, split entry. Spacious kitchen eating area with view of Sandy River gorge. Enjoy the warmth of the finished family area. Wet bar roughed in. Close to park. Ideal family home. Excellent loan assumption at less than 13 percent. Phone for detail & appointment. 661-6400 Eves. 666-5487. Priced at \$73,950.

THREE'S COMPANY
\$76,950, 3 bdrms, 3 baths, 3 sliding doors opening to a full-length deck, view of Mt. St. Helens, over 2,200 sq. ft. of living in excellent Gresham area. Assumable loan, call 661-6400 or eves. 665-2855.

LIVING IN THE TREES!
2854 sq. ft., daylight bsmt. 2 yrs young, located in Mesa Villa, one of Gresham's nicest areas. A feeling of being in the trees with deck off back, very private, possible 4 or 5 bdrms. Just on the market for \$84,950. Call 661-6400 or eves. 665-2855.

Reliable Realty, Inc.
Sandy, Oregon
668-7481



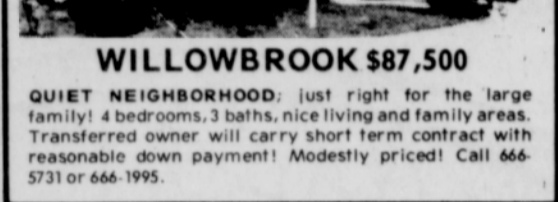
WOOD STOVE enhances this 4 bedroom home. 2 story. Easy to heat. 2 baths. Entry. Dining room 10.5 x 17. Den 11 x 11. Family room. Utility room 10 x 11. Sewing room 6.6 x 7. Fireplace in living room. Dbl. garage with shop area. Secluded quiet area. One acre nicely wooded. Wood deck. Many amenities. \$99,900.

ENJOY LIFE on these 2 acres with a 2500 sq. ft. ranch style home. 4 bedrooms, 2 1/2 baths. Formal dining room 11.4 x 12. Living room 14.6 x 16.6 with beautiful rock wall fireplace. Perfect homey family room 18 x 28 with large brick heatolator fireplace. Covered patio. Den or office 11 x 11.4. Built in vacuum, finished dbl. garage. Circular driveway. Country air and spaciousness are inviting. Excellent in which to entertain. \$125,000.

MILT ERICKSON REALTY
1685 E. Powell 667-1106
EVES: 666-7773



WILLOWBROOK \$87,500
QUIET NEIGHBORHOOD: just right for the large family! 4 bedrooms, 3 baths, nice living and family areas. Transferred owner will carry short term contract with reasonable down payment! Modestly priced! Call 666-5731 or 666-1995.



140 - Farms-Ranches
105 ACRE FARM, all or part. Gresham, 663-3238.
5 ACRES BARN & Home. Owner Contract. 668-6564.

145 - Apartments
CLEAN 2 bdrm., \$235-\$225. SE 19th, no dogs, 1 child OK. 666-7384.

STAGE G.I. FARM
9.85 ACRES fenced & cross-fenced, 34x24 barn, 24x36 shop, 1300 sq. ft. 3 bdrm 1 ba. home. \$125,000-667-4220 eves. 665-8581.

SAVE \$\$\$ U FINISH
POSS. 5 BDRM, 3 bth. in neat Gresham area. Flpic, patio + deck, rock & cedar exterior. Contract or Assume. \$88,400. For pure equality. 667-4220.

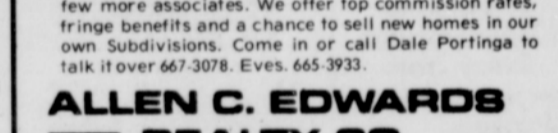
HIGH & MIGHTY
PRESTIGIOUS HOME for the particular contemp. 3+ bdrm with sweeping view. Wooded privacy. Deluxe finishing. \$149,950. Call 667-4220.

DAMASCUS
TWO FIREPLACES and 3 baths give luxurious feel to this 3 bedroom home. Huge deck and huge lot, plus additional lot available. Flexible terms, possible seller loan and low down. \$87,000. 667-3078. Eves. 661-1413.

DOUBLE LOT
TREES AND view both with this 3 bedroom ranch. Large deck. 2 baths. Double garage. Fenced yard plus extra lot. \$72,000. 667-3078. Eves 665-3933.

LOOKING FOR A CHANGE?
OUR RECENT move into a new office gives us room for a few more associates. We offer top commission rates, fringe benefits and a chance to sell new homes in our own Subdivisions. Come in or call Dale Portinga to talk it over 667-3078. Eves. 665-3933.

ALLEN C. EDWARDS REALTY CO.
667-3078
1180 E. Burnside



TARBELL REALTORS

554,900 Still Sparkles
Energy efficient in design. 3 bedroom Sandy ranch. Formal dining, pick colors. 665-3144, 663-4831 eves.

662,950 Priced Right
Smart 3 bedroom, 2 bath ranch. Formal dining. Fireplace. Double garage. 665-3144, 663-4831 eves.

669,950 Pride of Ownership
Manicured yard and immaculate home. 3 bedrooms. Formal dining. Fireplace. 665-3144, 658-5171 eves.

673,500 Sandee Palisades
Quality 3 bedroom ranch. Cedar accents in family room and master. Assume loan. 665-3144, 663-3478 eves.

688,000 Kid Proof
Fenced back yard. Basement. 5 bedrooms, 3 two-third baths. Finished family room. 665-3144, 761-5636 eves.

6109,500 Treed Seclusion
1 acre. Daylight ranch. 3 bedrooms. Family room. Rec room. 2 bonus rooms. 665-3144, 667-5226 eves.

6114,950 Family Ideal
In ground pool. Enclosed deck off formal dining. Wet bar. 3 bedrooms, 3 baths. 665-3144, 668-4300 eves.

6118,500 Beautiful Quality
Sunken living room. Custom drapes. Parquet floors. Rock fireplace. 5 bedrooms. 665-3144, 668-6796 eves.

6130,900 2 Acre Seclusion
Cathedral ceilings to match Mt. Hood view. 4 bedroom, 3 bath daylight basement ranch. 665-3144, 665-3967 eves.

6131,950 Super Modern
Split. 4 bedrooms, 3 baths. Formal dining. Fireplace. Wood stove. 1 acre. 665-3144, 658-5171 eves.

Ask our agents about... only at Tarbell. The FORCE!!! 665-3144 1691 N.E. Division

135 - Mobile Homes/Sale
1 BR 8 x 36, 2 BR 10 x 60, 3 BR 17 x 60 in family park. 668-4812.

77 LINDY 20' motorhome, excel. cond., low miles. \$10,750. 667-8089.

A PURELY DELIGHTFUL 14X65 Marlette, 2 Bdrm., Beautifully set in a quality Adult Park. National M.H. Sales 760-4060, bkr.

FAMILY 2 BDRM
12X48 Nashua for less than \$10,000 in family park NATIONAL MOBILE HOME SALES 760-4060 Bkr.

ASSUME 12 PERCENT CONTRACT
79 BROADMORE, 14X70, 3 bdrm, 2 bath, like new. Relocation necessary. For Sale by owner. \$15,950. Sandy area. 668-7558.

ONE OF A KIND BUILT-IN WARDROBES in every bedroom of this 24X48 Homette. A most exceptional home in Park near Sandy. NATIONAL MOBILE HOME SALES 760-4060 Bkr.

EAGLE CREEK 1980 COMMODORE 28x60, 3 Bdrm., Family Park. Estacada School Dist. delightful home. NATIONAL MOBILE HOME SALES 760-4060 Bkr.

CONTRACT TERMS \$4,500 DOWN on Super 14X70 in Adult Park on Clackamas River. Pets OK, unbelievably Priced at \$16,950. Call Ar. Roberts, 667-7721.

CENTURY 21 HALLMARK REALTY
140 - Farms-Ranches
105 ACRE FARM, all or part. Gresham, 663-3238.

5 ACRES BARN & Home. Owner Contract. 668-6564.

145 - Apartment
CLEAN 2 bdrm., \$235-\$225. SE 19th, no dogs, 1 child OK. 666-7384.

1 BDRM. ON Bus Line. Downtown Gresham, \$165, 665-5547.

2 BDRM. Range & Refrig. W.D.H.K. \$240 Plus Deposit. No Pets. Call: 661-5126.

2 BDRM TOWNHOUSE
LOTS of Extras, SE 16th Ave. \$310, 760-7189.

3 BDRM, \$140 per 2 weeks. (damage deposit req.) 665-9127.

CLEAN, PRIVATE country setting. 2 BR. \$235. In Sandy. 668-8251.

2 & 3 BDRM apts. SE location. \$230 up, pool & sauna. 761-1257.

FAIRVIEW, NICE 2 bdrm. newly redecorated, no pets, no children \$245 771-7564.

NICE 2 BDRM. on Court Reynolds Hi Area, On Bus Line, \$245 665-2962.

DUPEX STYLE 2 Bdrm., on Bus Line, 1 Blk. from Reynolds Hi. Children OK. \$260, 665-2962.

1, 2 & 3 BDRM apts., all completely remodeled, near MHCC. All appl's, including w.d.hkup. From \$225, \$265 & 325. 661-3015.

VERY NICE large 2 bdrm, 1 1/2 baths, frpic, deck, carpets & drapes, W.D.H.K. up. & we pay electric, gas & water. \$300 & \$325. 665-0879.

142nd & NE FARGO
NICE 2 bdrm townhouse in wooded setting, frpic, w.d.hkup, \$360 a mo. Call Jan 288-9161 or 661-3574 aft 6 p.m.

PRIVATE & SECLUDED ROYAL GREENS APARTMENT HOMES
2 BDRM. APTS. WITH CARPORTS FROM \$270

* NEXT TO GOLF COURSE
* NEAR SCHOOLS & BUS
* POOL
* HOME BOX OFFICE
* FULLY WEATHERIZED

GRESHAM 666-8422
1 BLOCK E. OF HOGAN RD.

Recent Weatherization Program
Insulation-Storm Windows
QUALITY COMFORT CONVENIENCE

CONTEMPORARY DESIGN VILLAGE 181
FULLY WEATHERIZED APARTMENT HOMES SPACIOUS 1, 2, & 3 BDRM. APTS.

FROM \$235
* FIREPLACES
* VAULTED CEILINGS
* WASHER-DRYER HOOKUPS
* CLOSE TO SHOPPING
* ON THE BUS LINE
* SMALL CHILDREN WELCOME
17873 NE OREGON
665-2359

CALL TODAY!

THURS., Jan. 15, 1981 (Sec. 2)
NEWER 1 bdrm., frpic, w.w. carpets, drapes, w.d.hkup, appls., energy eff. \$255. 760-7301 or 3141.

2 BDRM, NEW drapes & rugs, all electric, no pets. Prefer 25 & older. \$225. 1205 E. Powell, Gresham. 666-4777 or 665-6067.

APARTMENTS IN Troutdale, 2 blocks from Sandy River. 1 bdrm., \$185 a mo. Studio, \$130 a mo. R & R, some utilities paid. 666-8182.

2 BDRM., CARPETS, drapes, appls., w.d.hkup, frpic, patio, no pets. Burns off 182nd. \$235. 667-1785.

LARGE 2 BDRM. w-view, private driveway, clean, no pets. Adults only, \$230 a mo. \$50 cleaning deposit. 637-3879.

COLONIAL HEIGHTS, 2 BDRM. \$275. Townhouse, 1 1/2 Baths, W.D. Incd. 890 NW Division, 666-7384.

ON BUS LINE WALK TO SHOPPING
3 BDRM., 2 bath, flat & townhouse apts. \$285-\$295. 2 children ok, no pets. 665-7823.

WALK TO RESTAURANTS SHOPS OR BUS.
NEAR DIVISION & Burnside. 1 bdrm., deluxe apts., 1 infant ok, no pets. \$230 mo. 667-4501.

QUIET SETTING AMONG THE TREES
1 BDRM. DELUXE apt., No children or pets. \$240 a mo. Near 170th & Halsey. 253-2913.

2 BDRM TOWNHOUSE, TEE OFF Estates. All Appl's. + Garage. Disposal + Garage. \$275. Plus Deposit. Call: 253-3826. Shown by Appt.

ROCKWOOD AREA NEWLY DECORATED 2 Bdrm., Apts. \$240, \$250 & \$260. 3 Bdrm., \$285, 665-0942.

1 & 2 BDRM. apts. \$200 to \$230 a mo. \$150 deposit. R.R.R, d-washer, laundry facilities. 1306 NE Linden Gresham.

FURNISHED 1 BDRM, Carpet, Drapes, Refrig., Range, Patio, Lndry Facilities, Parking, Clean & Quiet. Near MHCC, NE 13th & Kane. \$235. Call: 661-1259.

1 BDRM. For Older Adults in 6-Plex at 920 NE Earl St. Gresham. Washer, Dryer & Storage. Furn. No Children or Pets. 253-5659 Eves or Wknds.

NEWER 1 level, 2 bdrm. every convenience, prefer quiet, mature. \$350, 287-0790 or 760-8248 eves & wknds.

2 BDRM APTS., w-w carpet, w.d hook up, R & R, d-washer, extra parking, very clean & quiet. From \$260-\$275 plus deposits. 667-4921.

THE RAINTREE APTS. 870 SE 187th, 1 bdrm, R & R, saunp, off street parking. Near shopping & bus. \$200. No pets or children. 666-2426.

GRESHAM'S FINEST
Quiet living with beautiful landscaping. Brand new 1, 2, & 3 bdrms avail. All electric appliances, carpets & drapes, energy efficient, garages & play areas. Children welcome. On Hwy. 26.

COME BY NOW AND SELECT YOUR UNIT
HOOD BROOK
HWY 26 #1074
by CTL Mgmt.
661-5815 & 248-1201

PRESTIGIOUS LIVING THE VILLAGE
HOME LIKE 2 BDRM. TOWNHOUSES & FLATS WITH GARAGES FROM \$295

* RECENTLY WEATHERIZED
* CLOSE TO SHOPPING
* CLOSE TO BUS
* WOOD BURNING FIREPLACES
* PARK LIKE SETTING
* TOTAL ADULT LIVING
* TENNIS COURTS
N.E. STARK AT 243rd
GRESHAM 666-4538

FAMILIES WELCOME MT. HOOD VILLAGE
FULLY WEATHERIZED APARTMENT HOMES 1, 2 & 3 Bdrm Apts. FROM \$235

* WALK TO MHCC
* ON THE BUS LINE
* CLOSE TO GOOD SHOPPING
* PLAY AREA FOR CHILDREN
* HOME BOX OFFICE
* NO PETS PLEASE
17th & KANE IN GRESHAM
666-5013

Property Management Services Inc

CALL TODAY!