

# FARMER'S MARKET



## 295-Machinery Equipment

USED GAS driven welders & oxygen & acetylene equip. Gresham Welding Supply Inc. 667-9353.

MITCHEL 500 spray unit, 50 gal. New. 668-6585.

WARDS TABLE SAW w-All accessories \$125. Power Hacksaw \$75. 668-4673.

FOR SALE. McCulloch Mini-Mack 35 Chain Saw with Case \$75 Call: 666-7590.

## WANTED

USED CHAINSAWS Will pay top dollar for saws in good condition. Don't wait, Call Now! 668-4727

SUPER A FARMALL 6' Mower, \$250. Call: 663-3860.



John Deere Introduces a bigger "Little-Big" Tractor—the 33-PTO-HP\* 1050 Diesel

The new John Deere 1050 Tractor is powered by a turbocharged 3-cylinder diesel engine—an industry exclusive. And that means more power, better fuel economy and fewer emissions than most comparable tractors with naturally aspirated engines. The new 1050 also has a Category 1 load-and-depth-sensing 3-point hitch, continuous-running 540-rpm PTO, color-coded controls. Plus a mechanical front-wheel drive option. See us today for a new 1050 Tractor demonstration.

Maximum PTO horsepower measured at 2400 engine rpm by official test.



GRESHAM LAWN & LEISURE 533 E. Powell • 665-8106 GRESHAM

## 300 - Livestock

WEANER PIGS, \$30 ea., 658-5314.

JOHN SUMMER horse shoeing 668-8332.

COW & 4 mos old calf, \$650, 383-2619.

PROFESSIONAL HORSE-SHOEING Call: 668-5773.

BEEF COWS w-helfer calves at side, 666-3220.

8 GOATS, 3 rolls field fence. Charlie Hamilton - 232-7189.

HORSE TRAINING & RIDING LESSONS - Contact Kennedy Arabian. 666-1036.

PLEASANT VALLEYS CUSTOM MOWING & HAY BAILING. Taking orders now! CALL 666-3271.

HORSESHOEING 20 YRS. experience, hot & corrective. Work Guaranteed. Call: 658-3845.

BULLS FOR rent. Reg. Polled Hereford, Charolais, & Angus. We deliver. 663-3571 or 663-1835.

FARMBUILDINGS POLE & FRAME CONST. Also Repair & Painting MINER CONSTRUCTION CO. 667-0484.

SLIM'S WARBNONNET STABLES HORSEBACK RIDING at its best! Good horses, lots of trails, no wait. \$5/hr. 659-3149.

REG ARAB mare 5 yrs. old, Western or English, 15.3 H. Good blood lines. \$2500 terms. Arab Filly, no papers, 2 yrs. old \$700 or best offer. Shetland pony gelding, 10 yrs old, make offer. 658-5388 or 658-4285.

306 - Food, Produce

BLUEBERRIES U-PICK, 40 cents lb. Clean field & good berries. 663-3425.

BLUEBERRIES, LARGE & Plentiful. U-Pick, 40 cents. Picked 35 cents lb. Les Edgren Family 41881 SE Coalman Rd. 666-5385.

BLUEBERRY PICKERS Wanted. 25 cents per lb. 293rd & Orient Drive, Orient, Across from Serve & Save Lumber.

BLUEBERRIES REAL NICE U-PICK. 55 cents lb. 1 MI. East of High School on US Hwy. No. 30 Corbett. 1-375-5386.

310 - Feed & Supplies

HAY FOR Sale. Klinger 665-9756.

GOOD GRASS hay stacked 360 a ton 658-2888.

GOOD CLEAN Hay for sale. 666-3271 or 775-8184.

HAY: ALFALFA, Timothy, Mixes. Grass hay: \$65 a ton. 785-3837.

335 - Nursery Stock

SAW DUST & chips \$3. a cubic yard. 663-5349.

## 300 - Livestock

HEREFORD BULL for rent. Domino strain. Call evenings between 6-9. 663-7797.

SIMMENTAL 1/2 Purebred Cow. Bull Helfer. 665-8524.

NUBIAN & Alpin doe goats purebred, good milk lines, ready to breed. \$45. \$65. 667-5514.

STUD SERVICE, Appy. Breed on Shares. 665-0335.

PROFESSIONAL HORSE-SHOEING Call: 668-5773.

GRAVENSTEIN APPLES, \$5 bushel, bring boxes, 1305 SE 135th, between Division & Stark.

U-PICK BLUEBERRIES or half & half shares. 3 miles east of Sandy off Hwy 26 44212 SE Sandercock Lane. 668-6274.

BLUEBERRIES U-PICK. 40 cents per lb. Larson Farm. 5 mi. SE of Troutdale on scenic Col. River Hwy to Springdale on Northway Rd. So. 1 mi. 8AM-8PM. Picked on order: 60 cents lb. 375-5306.

BLUE-BERRIES YOU PICK 45 CENTS-POUND

NO INSECTICIDES or herbicides, 45500 SE Coalman Road, Sandy. 668-5051 for picking days.

310 - Feed & Supplies

HAY FOR Sale. Klinger 665-9756.

GOOD GRASS hay stacked 360 a ton 658-2888.

GOOD CLEAN Hay for sale. 666-3271 or 775-8184.

HAY: ALFALFA, Timothy, Mixes. Grass hay: \$65 a ton. 785-3837.

335 - Nursery Stock

SAW DUST & chips \$3. a cubic yard. 663-5349.

ARBORVITAE-1 gal. \$1.40. Mughos, Azaleas & other shrubs also avail., 663-4280.

FISHER & SON NURSERY Wholesale Tree Seedlings ORDER NOW 658-5313

305 - Meats

305 - Meats

## 340 - Nursery & Garden Equipment

EXCELLENT TOP SOIL 667-1102

DECORATIVE RED ROCK WASHED & Cleaned. \$25 yd. we load yours. \$30 yd. delivered. Call: 666-1716

305 - Meats

305 - Meats

EAT INSPECTED MEAT

BUXTON'S

Lee Meat Company Sandy 668-4838

Custom Slaughtering Grain Fed Locker Beef Cut, Wrapped & Frozen Cattle Hauling On Tuesdays We Do Our Own Curing & Smoking TRY OUR SAUSAGES OUR PLANT FEDERALLY INSPECTED

While they last

SPECIAL

Fresh Pork Legs ..... 98¢ lb.

Fresh Pork Loins for Roasts or Chops ..... \$1.10 lb.

10% OFF REGULAR PRICE

SALE ENDS AUGUST 31, 1980

Ferguson's Power Equip.

Pioneer Square 668-4727

SALE ENDS AUGUST 31, 1980

Ferguson's Power Equip.

Pioneer Square 668-4727

SALE ENDS AUGUST 31, 1980

Ferguson's Power Equip.

Pioneer Square 668-4727

SALE ENDS AUGUST 31, 1980

Ferguson's Power Equip.

Pioneer Square 668-4727

SALE ENDS AUGUST 31, 1980

Ferguson's Power Equip.

Pioneer Square 668-4727

SALE ENDS AUGUST 31, 1980

Ferguson's Power Equip.

Pioneer Square 668-4727

SALE ENDS AUGUST 31, 1980

Ferguson's Power Equip.

Pioneer Square 668-4727

SALE ENDS AUGUST 31, 1980

Ferguson's Power Equip.

Pioneer Square 668-4727

SALE ENDS AUGUST 31, 1980

Ferguson's Power Equip.

Pioneer Square 668-4727

SALE ENDS AUGUST 31, 1980

Ferguson's Power Equip.

Pioneer Square 668-4727

SALE ENDS AUGUST 31, 1980

Ferguson's Power Equip.

Pioneer Square 668-4727

SALE ENDS AUGUST 31, 1980

Ferguson's Power Equip.

Pioneer Square 668-4727

SALE ENDS AUGUST 31, 1980

Ferguson's Power Equip.

Pioneer Square 668-4727

SALE ENDS AUGUST 31, 1980

Ferguson's Power Equip.

Pioneer Square 668-4727

SALE ENDS AUGUST 31, 1980

Ferguson's Power Equip.

Pioneer Square 668-4727

SALE ENDS AUGUST 31, 1980

Ferguson's Power Equip.

Pioneer Square 668-4727

SALE ENDS AUGUST 31, 1980

Ferguson's Power Equip.

Pioneer Square 668-4727

SALE ENDS AUGUST 31, 1980

Ferguson's Power Equip.

Pioneer Square 668-4727

SALE ENDS AUGUST 31, 1980

Ferguson's Power Equip.

Pioneer Square 668-4727

SALE ENDS AUGUST 31, 1980

Ferguson's Power Equip.

Pioneer Square 668-4727

SALE ENDS AUGUST 31, 1980

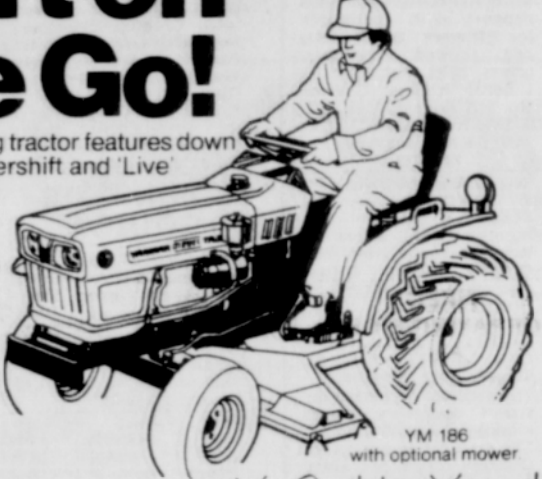
Ferguson's Power Equip.

Pioneer Square 668-4727

SALE ENDS AUGUST 31, 1980

## Shift on the Go!

Yanmar brings big tractor features down to size with Powershift and 'Live' PTO in compact tractors. Powershift means clutchless on-the-go shifting to keep you going where others bog down. 2-Speed 'Live' PTO keeps implements working at full power even when tractor is stopped. Plus more standard features and Yanmar's dependable 3-cylinder diesel engine.



You Can Use a Yanmar!

YANMAR TRACTOR U.S.A., INC.

BERGH MACHINERY CO. 663-4353 GRESHAM OREGON

## SATOH TRACTORS THE BEST FOR LESS!

15 HP 18 HP 25 HP 38HP



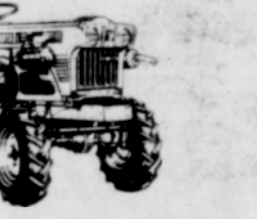
Up to 9 forward and 3 reverse speeds. 3 pt. universal hitch. 2 & 3 cyl. water cooled engines. Great for homeowners, nurseries and custom operators. Check our low prices.

FISCHER MILL SUPPLY 10 miles South of Gresham 631-3411 After hrs. 666-3145

## The Oranges Are Here!

KUBOTA Oranges Pick Your Oranges At

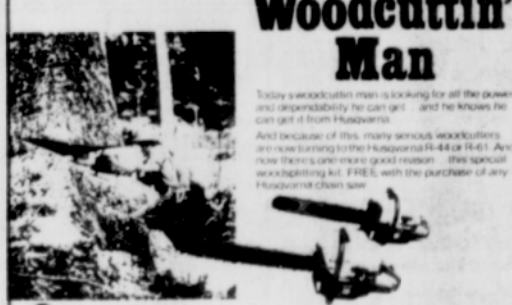
MOEN MACHINERY 268 NE Hogan



The Kubota Tractor Corporation announces their new dealer for the number one line of mid-size diesel tractors 12-71 H.P.

MOEN MACHINERY 268 N.E. Hogan Gresham, Ore. 665-9159 OPEN SUNDAY

## Husqvarna for the Woodcuttin' Man

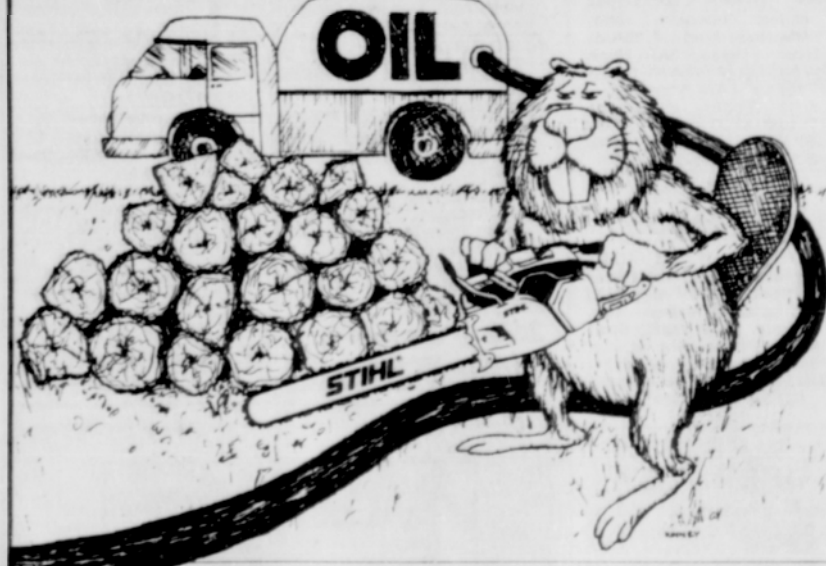


Take a vacation from working by off the beaten path. Husqvarna's new chainsaw is the most powerful you can get. It's the most powerful you can get. It's the most powerful you can get. It's the most powerful you can get.

A \$39<sup>30</sup> value FREE PLUS...FREE: An EXTRA CHAIN ...A \$21<sup>00</sup> to \$45<sup>00</sup> value FREE SAVE FROM '60 to '84

33680 Keiso Rd. Boring - Just west of Sandy off Highway 26

Mac's Feed & Equipment 668-4137 Your lawn & garden headquarters.



## Cut down fuel costs with a Stihl!

With fuel prices skyrocketing, now is the time to think about this winter's heating bills. Stihl offers you a fuel saving idea with teeth in it! Purchase the Stihl chain saw of your choice with a Stihl Energy Saver Kit, receive a durable carrying case and an extra cutting chain. PLUS additional money saving accessories. Value over \$50!



Save on one of these top-rated Stihl chain saws.

015-14" \$177.95 w/kit	028WB20" \$294.95 w/kit	031AVE 20" \$344.95 w/kit
------------------------	-------------------------	---------------------------

FERGUSON'S POWER EQUIP. PIONEER SQUARE Sandy, Or. 668-4727

