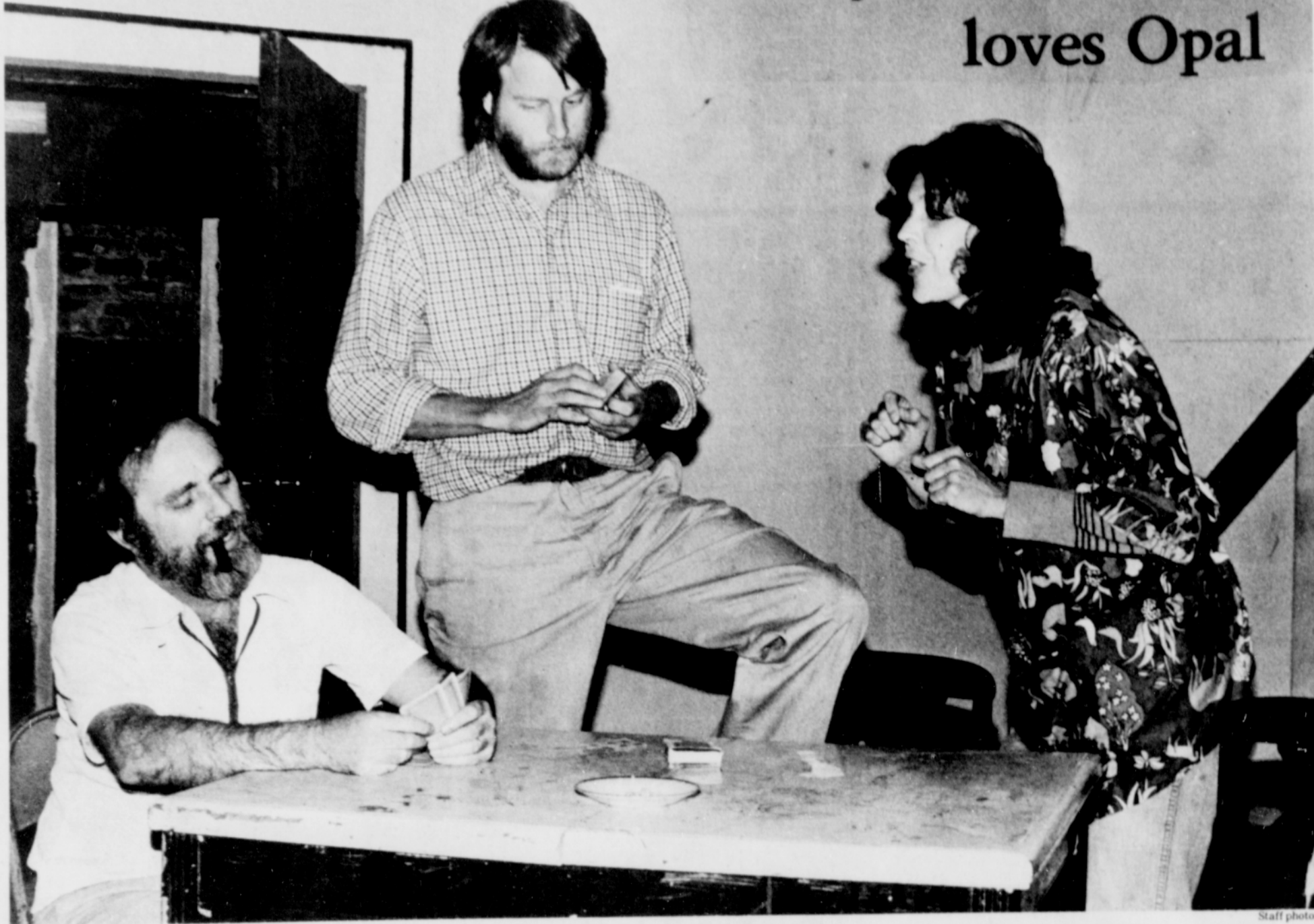


Everybody (almost) loves Opal



JIM WILHITE, JOHN KLINE AND JUDY SHEPPARD rehearse (above) for the June 29 opening of "Everybody Loves Opal" at the Sandy Community Theater. Marlene Tebo (right), who plays Gloria Gulock, pours tea for Sheppard, who plays Opal. Kline plays Bradford Winters, a cynical former college professor, and Wilhite plays Bozo.

"Everybody Loves Opal," a dramatic comedy by John Patrick, will open the summer season for the Sandy Community Theater on Friday, June 29.

The plot revolves around a character named Opal who collects everything from used tea bags to old newspapers. The play will run at 8 p.m. Friday and Saturday nights through July 14.

"If you were sitting around asking if it was a comedy, a drama, a tragedy, or farce, the answer could be an easy yes to all of those," said Jim Wilhite, who plays the part of Bozo in the production.

The story line includes some "rather despicable characters who end up living with Opal and plotting to kill her," he said.

Opal, he added, slowly wins the conspirators over to her side.

"For ending guessers, there's a rather surprise ending," Wilhite promised.

A benefit performance for Sandy Area Chamber of Commerce will be held 8 p.m. Tuesday, July 3.

"We could never have made it without local businesses," Wilhite said. "This is our way of thanking them."

The Sandy Community Players will hold a benefit auction at 3 p.m. Wednesday, July 4. Wilhite said more than 300 items, including gift certificates, coins, antiques and plants, will go on sale. Auctioneer will be Col. J. Tom Cox of Hoodland. Proceeds will go to purchase lights for the theater. Entertainment will precede the auction at 2 p.m.

Call 668-5300 or 777-5333 for reservations.



CLASSIFIED

YOUR PERSONAL SHOPPING CENTER

reaching over 45,000 homes thru THE OUTLOOK, SANDY POST, THE CITIZEN AND SHOPPER

NOTICE

3 Lines/14 issues \$16.85
Ad appears in all 3 publications
THE GRESHAM OUTLOOK
THE SANDY POST
THE CITIZEN

Compare: 3 Lines/1 issue \$8.75

Prices based on 10% discount if paid within 10 days of billing.

ALL RATES BASED ON CONSECUTIVE INSERTIONS WITH NO CHANGES

Please check your ad first insertion day. Advertiser is responsible for errors past first insertion.

ONE CALL DOES IT ALL!

Gresham and Sandy area **667-6633**

Damascus area call Toll Free **658-5000**

OFFICE HOURS 8:30 AM - 5:30 PM

DEADLINES

Family Want Ads Only

TUES. OUTLOOK & CITIZEN - NOON MON.
THURS. OUTLOOK & POST - NOON TUES.
SAT. OUTLOOK - NOON FRIDAY

GENERAL INFORMATION

BUSINESS POLICY:

The Outlook Publishing Co. reserves the right to:

- correctly classify all advertisements
- delete objectionable words and/or phrases
- edit, or refuse any advertisement

It is our intention that every advertisement clearly specify a bonafide offer-made in good faith.

ERRORS

The Outlook Publishing Co. accepts the responsibility for errors in the first publication - and then only for the charges made for the space utilized in publishing the errors. ERRORS CONTINUING beyond the first publication date SHALL BE THE RESPONSIBILITY OF THE ADVERTISER. Please check your ads each starting and stopping date.

ABBREVIATIONS

ONLY STANDARD ABBREVIATIONS or abbreviations having wide public acceptance will be used. Excessive abbreviations reduce the effectiveness of any advertisement. Make your ad understandable - to every prospective customer.

CLASSIFIED DISPLAY

Twelve 6-point lines per column inch. Multiple column ads must be as many column inches deep as columns wide. Artwork and borders accepted - 2 point border ONLY on single column display ads, unless artwork is used.

Keeping Posted

Saturday, June 23

Boring 4-H Dairy Club will hold a practice showmanship contest at 10 a.m. Gary Moore of Boring will judge. The practice contest will be at Wakena Farms, 16100 SE Amisigger Road, Boring.

Monday, June 25

Sandy High School basketball camp for high school age girls opens.

Tuesday, June 26

Sandy Chamber of Commerce meets at noon at TJ's Restaurant.

Wednesday, June 27

Sandy Area Merchants meet at 7 a.m. at TJ's Restaurant.

The Sandy TOPS (Take Off Pounds Sensibly) Club meets at 9 a.m. and 6:45 p.m. in the Community Action Center. For more

information on the morning club, contact Shirley Reed at 668-5338. For more information on the evening club, contact Ginny Rada at 668-7348.

Thursday, June 28

The Rebekah Lodge meets at the I.O.O.F. Hall at 8 p.m.

The Golden Age Club Potluck will be at noon at the Sandy Senior Center.

To place an item of community interest about your club or organization in "Keeping Posted," contact Dan Dillon at the Sandy Post, 668-5548.

Atiyeh starts food program

Governor Victor Atiyeh has formally kicked off his new volunteer program, "Oregon Food Share." This collective community effort has been developed to aid the elderly and disabled whose food stamp allocation was denied or reduced as a result of the April enactment of the Federal Food Stamp Act.

In Clackamas County the food drive will be coordinated by the Clackamas County Community Action agency. The Sandy Community Action Center will monitor the food boxes and distribute collected foods.

The governor, citing his belief in Oregon's ability to rise to a crisis situation and voluntarily assist fellow Oregonians has enlisted the services of the Oregon Lions Clubs, Boy Scouts, Girl Scouts and churches, as well as many other community groups throughout the state to implement the new program.

Boxes will be placed in grocery stores statewide to aid in the collection of the food. The boxes will be designated with an "Oregon Food Share" sign and will remain in the stores through June 30, according to Food Bank Director June Tanoue. Jackie Winters, assistant

to the state ombudsman, the program's main originator, states that Oregon Food Shares' main objective is to "collect foodstuffs from the public as well as private firms and make those goods available to existing food banks and nutrition centers in the community where the food was collected.

"Presently, increased demand has depleted the food supplies of these needed facilities and the governor has developed this program to rebuild their dwindling supplies," she continued.

The Food Bank program is also seeking out donations of surplus edible food from farmers, processors, wholesalers, brokers and retailers.

The Food Bank program is in its fourth year of operation and is a non-profit food salvaging organization. Its goal is to prevent the waste of all edible food.

Some types of food donated to the Food Bank are day-old bread, near pull date items and food with damaged packaging with unspoiled contents.

Those interested in donating food items who cannot locate a collection site can take their items to the Sandy Community Action Center on Pioneer Boulevard.

According to a survey by the Oregon State Adult and Family Services Division, "more than 89 percent of seniors and handicapped people have been cut back to some degree," Tanoue said.

"We realize this is a short-term solution, and that more equitable regulations in the food stamp program are the long term answer," Tanoue continued. "But until those changes come about, Governor Atiyeh, the Lions, and many businesses in the state feel we can't just ignore the hungry."

Currently there are two bills in the Oregon Legislature which relate to the program. SB 436 would exempt good faith donors of food from any liability arising from the condition of the food when donated to charitable agencies. It would also exempt from liability non-profit agencies which distribute the food.

HB 2255 would continue the tax credit enacted by the 1977 Oregon Legislature. The bill provides for a 10 percent tax credit to commercial growers who donate their products.

NOW IN SANDY, OREGON



Kraig & Sandy Hutchens

Buckboard

Their Latest: "IF I LOVED YOU TONIGHT" played on KRDR

DANCE CONTEST EVERY WED. NIGHT

Now through June!
\$25.00 FIRST PRIZE each week to the best!
Weekly winners compete at end of month for \$200.00 GRAND PRIZE. Join the fun!

COUNTRY MUSIC

Wed. thru Sun.

9:15 (except 5:00 on Sunday)

SUNDAY DINNER SPECIAL

Every Sunday, 4:30 p.m. - 10:30 p.m.
CHICKEN & SPAGHETTI
Includes Salad and Bread... Only! \$3.00 Person

STEAK DINNER FOR TWO

Only... \$8.95

STEAK & STUFFED SHRIMP

Only... \$7.95

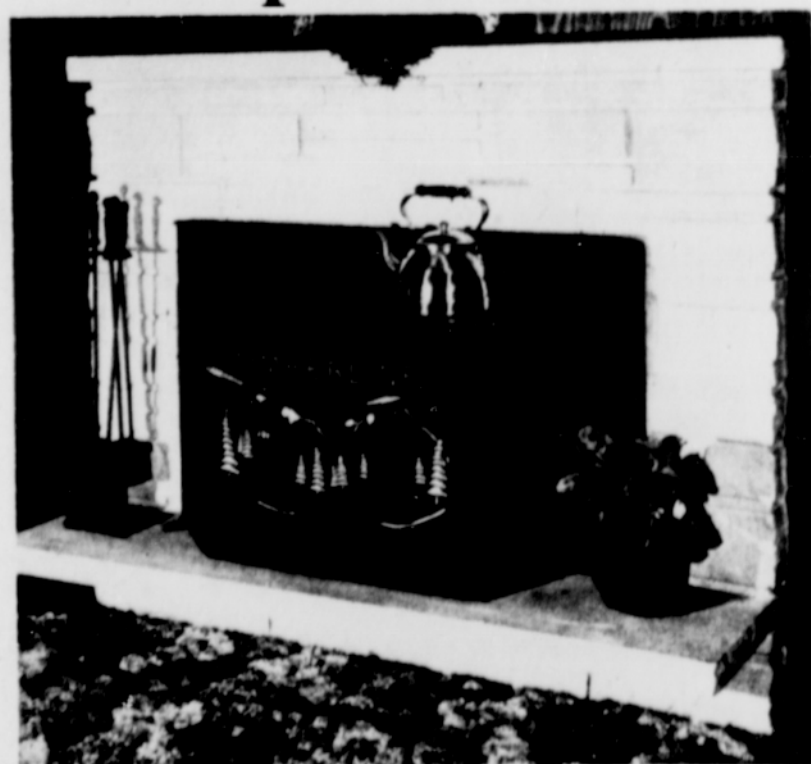
Ladies' Nite every Thurs. Nite
Well drinks, beer & wine daytime
prices all night!

And A 1/2" BREAKFAST SPECIAL
SERVED 24 hours daily.

Toni's

Restaurant open 24 hours Wed. thru Sat.
Closes at 10 p.m. Sun., Mon. & Tues.
RESTAURANT & LOUNGE — OPEN 24 HOURS
On Westbound Highway at N.W. First
39210 Proctor 668-6560

The Timberline Fireplace Insert



weight: 520 pounds!

\$50 off!

ANY Stove in Inventory!

Offer good thru June 30, 1979

Sandy, Oregon
668-6673

38970 Proctor Blvd.
668-6673

