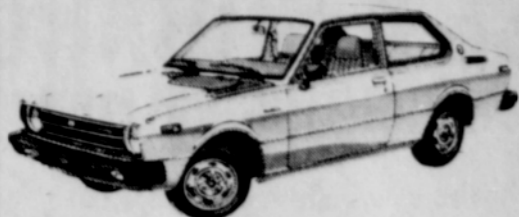


this week's best buys

1979 COROLLA



2-door Custom 5 spd.
4 cylinder, steel belted radials,
reclining bucket seats, power
assisted front disc brakes.

\$4150

Gateway Toyota
1134 S.E. 82nd 255-0177

CUTLASS SUPREME COUPE



\$5888

- 260 V8
- Auto. Trans
- P.S.
- P.B.
- Sport Mirrors
- Steel Belted W/S/W/
- Tinted Glass
- Deluxe Wheel Discs
- Deluxe Seat Belts
- Windshield Antenna



256-3700

Illustration May Differ From Actual Vehicle



Actual unit may differ slightly from illustration

1979 SUNBIRD SPORT HATCH

Beautiful Red exterior with Black interior,
Vinyl accent stripes, radial whitewall tires,
bumper strips, lamp group, sport mirrors,
non-glare rear view mirror, front power
disc brakes, power steering, rear deck
spoiler, cushion steering wheel, tilt wheel,
Rally II wheels, AM Radio, & body side
moldings. Stock #3139

\$4854³⁸

Jim Weston
Pontiac - GMC - Jeep inc.

675 E. Burnside

665-2166

255-3840



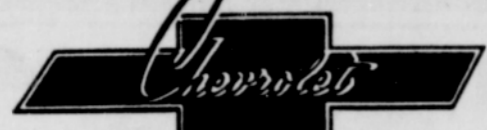
Actual unit may differ slightly from illustration

1979 CHEV. 3/4-TON PICKUP

Frost white featuring 5.7 litre V8, auto-
matic, power steering, HD power
brakes, cigar lighter, aux. fuel tank,
extra capacity rear springs, gauges, AM
radio, 9.50-16.5D tires, undercoat &
glaze and much more. Stock No.
CCZ0903-18

\$6284⁰⁰

Roy Tonkin



255-4100
122 NE 122nd

The All NEW 1979 VOLVO



Now at Jim Fisher VOLVO
Just in Time for
CHRISTMAS

Large Supply of New & Demo wagons &
sedans both in 4 and 6 cylinders, that MUST
be SOLD. Ask about leasing & overseas deli-
very. Come in today!

OPEN
SUN 12 TO 3
PHONE
221-0060



JIM FISHER
VOLVO DOWNTOWN
2157 W BURNSIDE
771-0000



KELLUM SEZ SELL 'UM CLOSE OUT ON ALL 1978 DATSUN'S



1978 DATSUN standard wheel base
Pickup

4 speed, all standard factory equipment,
Dual west coast mirrors, heavy duty rear
bumper, low miles with remaining factory
warranty.

Lic. & Title **\$4247⁰⁰**
Extra

serial # HL620-31147 Sale ends Dec. 26, 1978
Picture may differ slightly from actual unit



360 McLoughlin (99E) Phone 656-0828

Monte Carlo



Tinted glass, power steering, power
brakes, automatic, V8, and much,
much more equipment.

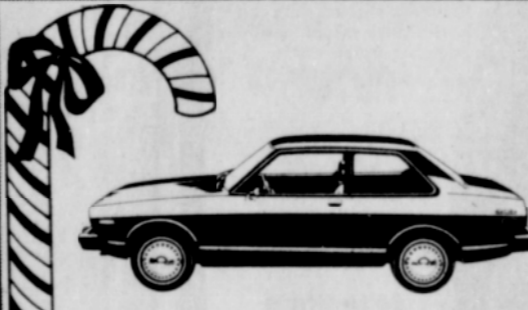
SPECIAL \$5239

Sale ends December 21, 1978. Units for sale and
those pictured may differ in some detail.



Leisure Wheels
CHEVROLET

234-5429 1550 S.E. 82ND AVENUE



1978 Datsun B-210
No. 380422

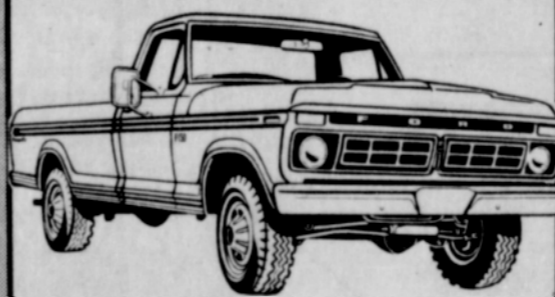
Two-door Deluxe
4 cylinder, 4 speed
undercoat, too!

Only \$3590

Fisher Datsun
Mall 205

10115 SE Stark 256-2500

MARV TONKIN ON Stark



1976 FORD F-150

4X4 V8, Auto., AM/FM PS, Aux. gas tank.
Includes canopy.

\$5186

SEE US NOW - YOU OWE IT TO YOURSELF
• NO HASSLE • NO PRESSURE
Just friendly courtesy service
MAKE US AN OFFER WE CAN'T REFUSE

123 S.E. Stark 252-5511

930- Autos

- 68 MUSTANG 6 cyl auto 12,000 miles-yr since new, Good clean cond. \$1395 666-3239.
- 70 OLDS 98, 4 door hard top, loaded, \$695, 666-5176 after 6 PM.
- 68 DODGE Charger, 383 AT, runs good \$200 668-7606.
- 78 CADILLAC DeVILLE LESS THAN 20,000 new, mulberry-leather interior, auto doors, trunk, P.S., P.B., AM-FM 8 track, 1/2 Landau top, wire whis + 2 snow tires, like brand new, \$11,200. Call 658-4760 or 256-3928, ask for Karen.
- 1978 PONTIAC Brougham loaded with extras, exceptionally clean beautiful car, \$6700 call 658-4751-6785.
- 72 CHEV Impala, 4 door hrd. top, air, exc cond, \$850 666-6835.
- 73 OLD Omega, 64,500 miles, V8, AT, P.S., P.B., AC, Good condition, \$2050 or \$1650 and trade, 667-0415 before 2 Mon. thru Sat. after 5 on Sun.
- 67 CHEVY Impala, \$300 or best, 665-4053.
- 71 DATSUN 2 ton, new paint, 1950, 666-9294 or 666-4066.
- 77 OLDS Omega, V8, Standard Trans, radio & heater, sun roof, low miles, \$3795, 775-0358.
- 75 OLDS Starfire, V-6, PS, P.B., 4-sp, FM cassette, slotted mags, stock wheels, with new tires, and 2 new snow tires, \$2900 665-8640.
- 71 TOYOTA Mark II Wagon exc cond, new tags, \$950 666-7597.
- 65 CADILLAC, runs good, part rebit, \$275 or best offer 663-5848 after 5PM.

930- Autos

- 1973 FORD Courier 4 sp, extra gas tank, \$1750 668-6763.
- 63 FORD Fairlane, Pioneer cassette deck, snow tires included, excellent condition, it's a classic \$995, 253-1038.
- 72 VW Super Beetle, steel belted radials, service record, \$1500 or best offer, 658-3954.
- 72 DUSTER 340 w PB, new tires, sharp, \$1700 Ph. 663-3378.
- 70 BUICK Gnd Spt 442, 2 dr, air, P.S., red 1 owner \$850 665-4247.
- WILL SELL or trade parts, on a 59 chev Belair & 64 Chev Malibu, 661-2658.
- 1967 FORD Galaxie 500, 4 dr, very fine condition, must see, \$900 665-2680.
- 1973 JAVELIN exc condition P.B., PS, AC, \$2700. Please call 665-5674 after 3PM, all day wknds.
- 68 CHEVY Bel Air, PS, PB, runs well \$275 255-6805 or 254-8291.
- 75 FORD Courier, excellent condition, many extras, 661-1128.
- 73 CHEVELLE 55, must sell, PS, PB, AT, Sun roof, vinyl top, bucket seats, \$1700, 667-5528.
- 70 BUICK Grand Sport 455, 2 dr, air, PS, red, 1 owner \$750 665-4247.
- SUNROOF-OVERDRIVE in good condition, 73 2 dr, Volvo 142, \$2500, 761-1334.
- MUST SELL 76 Chevy Monza 2+2, AC, new mud & snow tires + more, \$3100 or make offer 666-1432 ask for Strawberry.

930- Autos

- 72 NOVA 6 exc cond, 48,500, actual miles, new tires, ufo, radio and heater, \$1,895 666-1553 or 663-6526 after 6 pm.
- 72 MAVERICK, yellow, 4 door, gd. condition, snow tires, 67,000 miles, \$1800, 663-5544.
- 1975 MG Midget 28,000 miles, runs good, \$2800 760-1795 or 760-5237 after 7PM.
- 73 FORD Country Sedan Clean, good cond \$795, 658-4900.
- Insurance Problem? SR-22 Accidents-Tickets Try us, 667-3149
- 74 DATSUN B-210 \$1600 665-7023.
- 67 VW Baha custom bug with 69 Corvair engine. Best offer, 666-1454.
- 69 REBEL Wagon, 6 cylinder stick, \$400, 90 tags, 254-1653.
- 78 CHRYSLER LEBARON, 2 door hard top, with T-Bar, interior black on black, must sell! 665-0860.
- 78 TOYOTA LIFT back 5 speed, loaded, \$5495, 665-0860.
- 73 RANCHERO, excellent condition, low miles, \$2500 256-0378.
- 60 FORD Falcon Ranchero, 4 speed, bucket seats, 665-3545.
- 64 VW BAJA chrome wheels, mud & sand tires new, bucket seats & extra parts \$695 663-5981.
- 64 FORD Galaxy 500 427 new motor and acces new paint, slot mags and radial T.A., \$1500 or best offer, 666-7928.

930- Autos

- 59 CHEV Panel, 396 Hemi Eng, 10,000 miles, excellent condition, \$1000, 255-9632.
- 64 CHEVY Nova runs \$200 668-4407 aft. 5.
- 77 GRANADA, PS, AC, vinyl top, \$4000 Firm, 667-6197 or 666-9145.
- 76 MK 4, Lincoln Continental, diamond fire black, moon roof, loaded with extras, low miles, sell or trade for property, 658-5352.
- 68 CAMARO SS 296, Muncie 4 spd, factory tape deck, 29,000 mi, \$2150 668-4321, 666-4557.
- 77 TOYOTA Celica copper, 5 sp liftback, sharp \$4995 663-4266 eves.
- 69 PRESTIGIOUS Mercedes 4 dr, 280 S, stereo, sun roof, very clean \$4200 firm, 1-375-5415.

930- Autos	930- Autos
SMALL VANS • USED TRUCKS • CARS • SMALL VANS	USED TRUCKS • CARS • SMALL VANS • USED TRUCKS • CARS • SMALL VANS
1960 CORVAIR 4-speed \$295	1963 CHEV. P.U. \$795
1964 GMC P.U. SHARPI \$995	1966 MUSTANG \$495
1966 DODGE CORONET \$275	1967 CHEV. 1/2 TON \$795
1967 PONT LOMANS MUST SEE! ... \$1295	1967 DODGE CORONET WGN \$275
1968 FORD 1/2 TON 1 OWNER \$1295	1968 CADILLAC SEDAN DEVILLE .. \$695
1968 CUDA CONV. Minor Damage ... \$995	1969 GMC VAN Good Work Van ... \$1295
1970 LTD SQUIRE WGN \$595	1970 T-BIRD LANDAU 4 dr \$1495
1970 CHRYSLER 300 sedan, runs good \$245	1971 DATSUN 1200 CPE. \$795
1972 V.W. BUG AUTOMATIC \$895	1973 DODGE DART 6, Auto., P.S. ... \$795
1973 TOYOTA CORONA WGN \$1095	1972 NOVA CPE, 6-3 speed \$1295
1972 MALIBU 4-speed, V8 \$1995	1967 COUGAR V8, Auto., P.S. \$495
1962 FORD P.U. \$395	1970 CHEV. WGN \$375
1972 CHEV. VEGA \$295	1972 TOYOTA WGN \$595
1965 BARRACUDA \$495	1968 BARRACUDA \$1495
1972 DUSTER 6, Auto \$1695	
WE TAKE ANYTHING OF VALUE IN TRADE JEFF BALDWIN AUTO SALES NE 122nd E. Burnside 255-0481	
SMALL VANS • USED TRUCKS • CARS • SMALL VANS	USED TRUCKS • CARS • SMALL VANS

MCROBERT FORD	
USED CAR VALUES	
1978 FORD FIESTA 4 cyl., 4 speed, interior decor, group, rear window defroster, radial tires, low mileage rental car. Two in stock	\$3698
1976 AMC PACER 6 cyl., auto, PS, 19,769 miles	\$2898
1978 MUSTANG II 2 door, 4 cyl., auto., P.S., P.B., low mileage, rental car	\$4498
1977 FORD PINTO R/A 4 cyl., 4 speed, rallye wheels, tape stripes, 11,180 miles	\$2798
1976 CHEV MONTE CARLO 305 V8, Auto., P.S., P.B.	\$3998
1973 FORD GRAN TORINO SQUIRE 8 pass. station wagon, 400 V8, auto, PS, PB, air conditioned, luggage rack, 53,211 miles	\$1998
1971 TOYOTA CORONA 4 door, 4 cyl., 4 speed, radial tires	\$1398
1975 DATSUN STA. WAGON 4 cyl., Auto	\$2998
1975 DODGE SWINGER 2 dr., Htp., 6 cyl., Auto., P.S., 41,623 miles	\$2998
1973 DATSUN COUPE 4 cyl., 4 speed, vinyl roof, 39,946 miles	\$2198
PICKUPS	
1977 CHEV. 1/2 TON Custom Deluxe, 6 cyl., 4 spd., Western mirrors, rear step bumper, 23,259 miles	\$4198
1976 FORD F-250 Supercab Ranger 390 V8, Auto., P.S., P.B., Air conditioned	\$5298
1976 FORD F-250 6 cyl., Auto., P.B., 25,730 miles	\$3898
1975 FORD F-250 390 V8, Auto., P.S., P.B., Western Mirrors, Body Side molding, rear step bumper, Aux. fuel tank, 52,845 miles	\$4398
1975 CHEVROLET 1/2 TON Custom Deluxe with canopy, 6 cyl., 3 speed, rear step bumper, western mirrors	\$3498
1972 INTERNATIONAL TRAVELALL V8, Auto., P.S., P.B., Air conditioned, western mirrors, luggage rack	\$2498
4X4's	
1973 JEEP WAGONEER 360 V8, Auto, PS, PB, Air conditioned, Luggage rack	\$3498
1972 JEEP WAGONEER 360 V8, Auto, PS, PB, Hubs, Hi-Lo Range, 63,860 miles	\$3298
MCROBERT FORD	
243rd & SE POWELL IN GRESHAM 665-0101	