

590- Miscellaneous

FOOSBALL TABLES
FOR RENT
Weekdays \$10
Weekends \$20
Jukeboxes also 665-6610 or 668-6289.

HAND MADE JEWELRY
HEARTS-CABS-Bracelets-Stick Pins-Necklaces-Earrings-Pen Sets-Agate Clocks.

OREGON'S LARGEST MALACHITE
FREE FORM Cabs-Jade-Cabs-Carnelian Cabs-and Rock equipment.
1202 NE 166th
253-1517

CIDER PRESS, New electric \$400 665-5992.

See Paul for **DIAMONDS**
Southgate Shopping Center
771-4962
10411 SE 82nd, Portland, Or.

CHINA 95 yrs. old, Haviland Limoges France, 8 pc setting with 12 dinner plates, 666-9962.

CASH
For any U.S. or Foreign coins, jewelry antiques, pocket watches, running or not, class rings, dental gold or sterling.
CALL
For our FREE gift list of over 1000 different items we buy

AMERICAN COINS
60th & S.E. Foster Rd.
777-5333

600- Antiques

ORIENTAL NICHOLS rug 12x15, Chinese ivory embossed 1920 \$750 637-3835 Eagle Creek

ORNATE ANTIQUE Dresser \$65, 3 wooden toilers \$10 ea, handmade very old Hickory rocker \$55 ea, Antique glassware, horse collars \$15 ea, oak end table \$25, misc clothing, 658-5191 if no answer please keep trying.

ANTIQUO OAK Ice box excellent condition \$300 or best offer, 668-6327.

1850s ENGLISH parlour couch, rosewood, exc condition, low appraisal \$600, will sell for \$350 666-7911 eves.

OUTSTANDING & LOVELY ENGLISH WASH stand, burled walnut, beveled mirror, marble top \$395, matching china & closet in mint condition \$695; Unique 10 drawer, oak cash register stand, dated 1909 in mint cond. \$595 663-3848.

610- Hobby Supplies

PAPER PATTERNS for two delightfully different stuffed toy dogs. Simple machine and hand sewing. Full instructions. \$1.75 each, both for \$3.00 ppd. MARION'S IDEAS, P.O. Box 42416-GO, Portland, Or. 97242.

"HAND MADE JEWELRY"
HEARTS-CABS-Bracelets-stick pins-necklaces-earrings-pen sets-agate clocks.

OREGON'S LARGEST MALACHITE
FREE FORM cabs-jade cabs-Carnelian cabs-and rock equipment.
1202 NE 166th
253-1517

630- Garage, Sales

Flea Market
Visit Springer's Northwest's Finest Open every Sat. & Sun. 10 - 5
Free Parking
No admission
Turn at 100th & Powell to Richie Rd. or 173rd & Foster to Richie Rd.
665-3568

LITTON 540 Microwave \$480; compl. dbl bed cherrywood headbd & footbd \$75; lg din. rm table, & chairs, 3 leaves \$450 668-7851.

MOVING - PING-PONG table, sofa, loveseat, couch, pool table, old couches, misc, call 665-4207 eves.

715- Xmas Trees

CHRISTMAS TREES CHOOSE & CUT
PLEASANT VALLEY TREE FARM
Thousands to choose from -
• Small
• Large
• Very large
Open Fri., Sat. & Sun. Dec. 1 to 23 10 a.m. to Dark
S.E. Foster to 172nd or S.E. Sunnyside to 172nd

630- Garage, Sales
DBLE BED complete in good condition black and white console TV, split cedar fencing, car top carrier, boy's bike, toys and misc. Thur-Sun 9am-dark Dec 21-24th. 1025 SE 213th Ave. Gresham betw Stark and Burnside. 665-0917.

GAS RANGE \$45; 2 children's desks \$20 ea; Natural gas space heater 35,000 \$35; Repairable white couch \$25; Antique drop leaf table \$15, 668-5312

MAPLE & Alder firewood, 845 a cord delivered 668-4731.

RE-DECORATING SALE. Sofa and 2 recliners wood dining room set 6 chairs, table and hutch. Large bookcase, 4-piece bedrm set, new springs and mattress, and misc. 760-1781 Sat Dec. 16-23.

640- Clothing

GOOD USED CLOTHING. 42 long suits and sportcoats, neckties, 36 waist pants. Women's dresses, blouses, and skirts. Sizes 10-12. Call 667-4688.

GOOD QUALITY men's clothing, pants sz. 40, shirts 16-16 1/2; sweaters and jackets, sizes 10-12. Call 667-4688.

FUR COAT like new, black caracul, sz 16-18 new length \$200 284-5811.

650- Wood & Sawing

STOVE & Fireplace wood Alder pickup loads \$50 284-7376.

MC CULLOCH CHAIN saw Power Mac 320 \$125. 661-1544.

TAKING ORDERS for after holidays. Maple, alder firewood, exc. quality \$70 1-374-8562.

FIREWOOD 16 in. or Fir 1/2 cord \$25 delivered and stacked. Seasoned wood, 630-6216.

ALDER AND fir mixed 665-cord 661-1518.

IT'S HERE - Winter! Order now firewood, fir & alder, full cords split and delivered \$65. U pick up \$55, also 1/2 cords, 630-4328.

HOMELITE 350XL Auto. Good cond - 24" bar \$165 637-3111.

670- Timber, Sale

WANTED ALDER and Fir stumps for firewood, also interested in Cedar, shake bolt material. 774-9550.

680- Food & Produce

CARROT JUICE made fresh daily, now taking orders, 253-5754.

Food Processing Equipment
NOW 116.90 off reg. price. Super Deluxe Bosch magic mixers. The Christmas gift with many returns! Sale Ends Dec. 31.

Demos Daily!
FREE SAMPLES & Loans! Food dehydrators on sale too! Cider Mills, wheat, storage containers, Mountain House Free dried foods, juicers, much more.

MAGIC MILL CENTER CORNER DIV. & MAIN
666-7188

700- Nursery & Garden Equip.

YOU CUT Xmas trees, retail, wholesale, Sandy area 668-6463.

BARGAIN, DISPOSING Orchard, 5 yr. old dwarf pear & apple trees, u dig \$10 ea. 631-2034.

710- Nursery Stock, Seed, Sup.

LAWN MOWERS for sale 663-5360.

NURSERY FOR SALE
APPROX 14,000 sq ft of green houses and various outbuildings, all equipment incl. plus complete inventory of approx \$20,000 in plants incl Hoyas, Rex Begonias, Fushias, Cactus, Jade, Geraniums, etc. Situated on 1/2 acre in good SE location \$60,000.

RELIABLE REALTY 761-1993 days or 667-1820 eves

BARKDUST DELIVERED or U-haul, 658-3196.

715- Xmas Trees

710- Nursery Stock, Seed, Sup.

710- Nursery Stock, Seed, Sup.

710- Nursery Stock, Seed, Sup.

710- Nursery Stock, Seed, Sup.

710- Nursery Stock, Seed, Sup.

710- Nursery Stock, Seed, Sup.

710- Nursery Stock, Seed, Sup.

710- Nursery Stock, Seed, Sup.
Grow Strawberries, Tomatoes, Lettuce, etc. all Winter. Mulched fibreglass greenhouses. New solar panels, grow mats. Faster and cost less to heat. Also demonstrate and factory seconds available.
OREGON GREENHOUSE INC.
DAYTON JUNCTION
864-2000

Giendover Acire Greenhouse
INVENTORY CLEARANCE
1200 varieties of upright houseplants, \$3. 6" baskets (50 varieties) \$3.25. 668-4705.

710- Nursery Stock, Seed, Sup.

BARGAIN BARKDUST: \$30 PER unit, delivered, call 668-6672 or 663-5056.

715- Xmas Trees

XMAS TREES - Grand and Fraser fir, also others. 663-3425

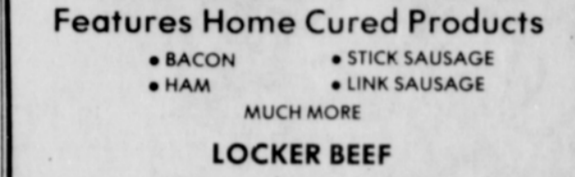
LIVE NOBLE Fir, 5-7', \$15 each. 668-5245.

XMAS TREES \$3-\$7, 3 Cedars Ranch, 1 mile S, 3 mile E of Eagle creek on Wildcat Mtn. Drive. 637-3453.

720- Meats

720- Meats

Choose & Cut Your Own Christmas Tree
BRIAN TREE PLANTATION
Price: \$400 for any shaped Douglas or Noble Fir up to 10-foot
Time: 9-5 Dec. 9-10, 16-17, 23 (Sat. & Sun.)



720- Meats

720- Meats

720- Meats

720- Meats

720- Meats

720- Meats

720- Meats

720- Meats

720- Meats

720- Meats

720- Meats

720- Meats

720- Meats

720- Meats

720- Meats

720- Meats

720- Meats

720- Meats

720- Meats

720- Meats

720- Meats

720- Meats

720- Meats

720- Meats

720- Meats

720- Meats

720- Meats

720- Meats

720- Meats

750- Livestock
HORSES
DISPERSAL SALE 20 horses, hunter-jumpers prospects, also trail-horses and show horses. We will sell your horse on consignment, will hold horses for Christmas. Call anytime. 667-2655, 761-9409 or 667-6664.

ANGUS FEEDER calves, 68 cents-lb. Will deliver. 663-4692 or 663-3684.

WANTED YEARNING Hereford bull 663-3845.

WANT TO sell your car? Try the Classifieds!

BULL SERVICE by artificial insemination. Semen from Curtiss. Choice of all breeds, dairy beef, dual purposes, 665-3173.

HORSESHOEING BILL Reed, hot, cold corrective. 665-4008.

EXPERIENCED HORSESHOEING, Roger Reed 1-383-2688 Corbett.

TEAM WELCH ponies, harness, work or riding, safe with children. \$650 668-8490.

CATTLE BUYING and Hauling, Jack Hashagen 668-7296 evenings.

"Horseshoeing" Edward "Butch" Norton Immediate Service 668-6802

JOHN SUMMER horse shoeing. Oklahoma Farriers College, Certified, Sandy, Ore. 668-8327.

BULL FOR rent, Polled Hereford, Charlots, Angus. Free pickup and delivery. 663-3571.

750- Livestock

750- Livestock

750- Livestock

750- Livestock

750- Livestock

750- Livestock

750- Livestock

750- Livestock

750- Livestock

750- Livestock

750- Livestock

750- Livestock

750- Livestock

750- Livestock

750- Livestock

750- Livestock

750- Livestock

750- Livestock

750- Livestock

750- Livestock

750- Livestock

750- Livestock

750- Livestock

750- Livestock

750- Livestock

750- Livestock

750- Livestock

750- Livestock

750- Livestock

750- Livestock

750- Livestock

760- Livestock feed supp.
DRY SHAVINGS del. or you haul also cedar tow, 658-3196.
GRASS AND oats, hay \$1.25 bale, 668-7658.
QUALITY HAY, Pleasant Valley area, \$40 per ton, 666-5637.
14" WESTERN Saddle, Good cond \$90 658-4859.
100 UNIT rabbitry, automatic watering system, 663-3868.
GOOD GRASS hay in barn no fancy \$40-ton or trade for sheep, 668-4353.
HAY, EXCELLENT 630-3508 or 630-3506.
FOR SALE grass hay & oat hay \$1.75 per bale, Sandy-Kelso area, 668-6679.

760- Livestock feed supp.

760- Livestock feed supp.

760- Livestock feed supp.

760- Livestock feed supp.

760- Livestock feed supp.

760- Livestock feed supp.

760- Livestock feed supp.

760- Livestock feed supp.

760- Livestock feed supp.

760- Livestock feed supp.

760- Livestock feed supp.

760- Livestock feed supp.

760- Livestock feed supp.

760- Livestock feed supp.

760- Livestock feed supp.

760- Livestock feed supp.

760- Livestock feed supp.

760- Livestock feed supp.

760- Livestock feed supp.

760- Livestock feed supp.

760- Livestock feed supp.

760- Livestock feed supp.

760- Livestock feed supp.

760- Livestock feed supp.

760- Livestock feed supp.

760- Livestock feed supp.

760- Livestock feed supp.

760- Livestock feed supp.

760- Livestock feed supp.

760- Livestock feed supp.

760- Livestock feed supp.

760- Livestock feed supp.

760- Livestock feed supp.

760- Livestock feed supp.

760- Livestock feed supp.

760- Livestock feed supp.

760- Livestock feed supp.

760- Livestock feed supp.

760- Livestock feed supp.

760- Livestock feed supp.

760- Livestock feed supp.

760- Livestock feed supp.

760- Livestock feed supp.

760- Livestock feed supp.

760- Livestock feed supp.

760- Livestock feed supp.

760- Livestock feed supp.

760- Livestock feed supp.

760- Livestock feed supp.

760- Livestock feed supp.

760- Livestock feed supp.

760- Livestock feed supp.

760- Livestock feed supp.

760- Livestock feed supp.