

From page one

## High winds sweep city

make the roof susceptible to leaks during the next heavy rain.

The Helberg family on Cornog Road also escaped serious damage, according to Susan Helberg.

"My husband and I were working and we saw this huge thing going through—this huge cloud, and then it started pouring rain and the wind started up," she said. "The lights went on and off and two trees knocked down power lines and fell near our car."

"Two more trees fell on our house," Helberg said. "Thank goodness we had an Aerospans house, they can stand a lot more pressure."

The Helbergs lost 10 trees during the storm and escaped serious injury and damage when the power lines fell harmlessly to the ground. Bill Richardson is another Sandy resident who saw falling limbs threaten power lines.

"I was mowing grass and looked up and saw this dark cloud coming at me," he said. "I kept mowing and pretty soon I looked at my neighbor's yard and saw a solid sheet of rain with the wind blowing real hard."

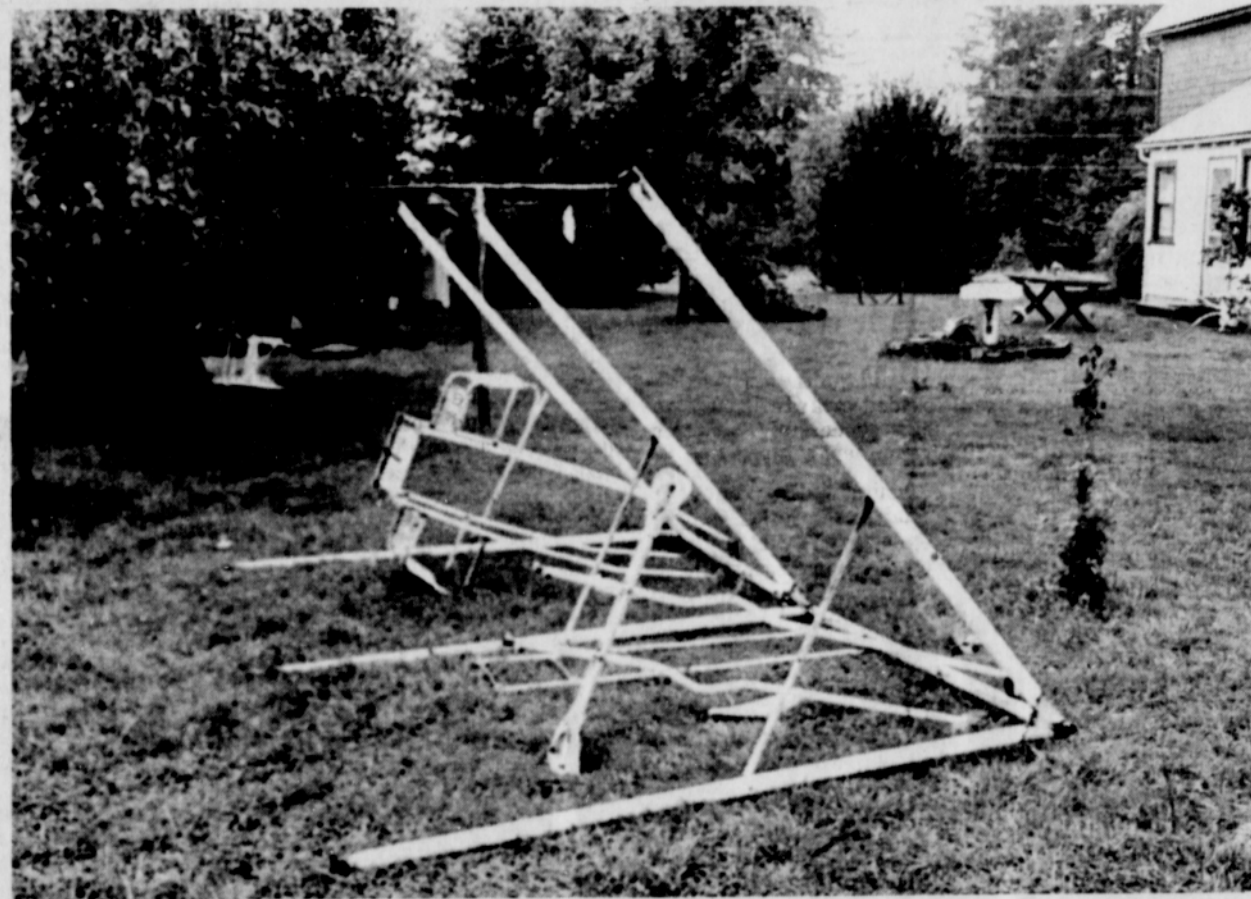
"We that rain hit my neighbor's roof so hard that the spray went 50 feet over the barn," Richardson added. "Then I heard what I thought was a transformer blowing and saw three limbs lying across the power lines."

"It was like a twister, really, just a wild torrent of wind and rain," Richardson said. "It wasn't more than about four minutes and it was over—I've never seen anything like it in all my days. It was like a typhoon in Japan or something."



Strong winds destroy tree

Staff photo



'Tornado' strikes Fred Miller home

## County commission on water meets Sept. 6

The Clackamas County Water Policy Advisory Commission is encouraging public participation at its Sept. 6 meeting in the Board Room of Barlow Hall at Clackamas Community College.

The discussion will focus on the development and control of private and small community water supplies. The commission is in the

process of preparing a county-wide policy on how private water supplies will be handled in the future.

The commission is comprised of nine county residents. It meets on the first Wednesday of every month at 7:30 p.m. at Clackamas Community College.

## 'CB' Break to help boy

The Sandy-Estacada CB club is planning a benefit "CB Break" in Gresham Sept. 10. The event will be held at the Skate World roller skating rink from 4-7 p.m.

The San-Cada CBers have established a fund to benefit Jason Lee Loar, a 7-year-old Portland boy who was injured in a swimming accident in June, 1977.

The boy is still in a coma and is being treated at Providence Child Care Center. Friends of his family are attempting to raise \$5,700 to transport the child to a specialist in Texas.

The skating rink will contribute 50 cents per paid admission to the Jason Loar fund. The public is invited to the event, and contributions to the fund can be mailed to the San-Cada CB'ers, Box 261, Sandy.

**Ron Norquist**  
38720 Proctor Blvd.  
Pioneer Square  
Sandy, Oregon  
668-4327

**"I can help you get the most from your life insurance dollar."**

Like a good neighbor,  
State Farm is there.

State Farm Life Insurance Company  
Home Office: Bloomington, Illinois

## Barlow Trail Inn

-- ANNOUNCES --

**Live country-western music for dancing Friday & Saturday 9-2:30 and Sunday 6 - Midnight . . . .**

ALSO  
**SMORGASBORD**  
(All you can eat)

**6-9 p.m. every Tues.**  
\$4.95 adults; 1/2 Price, 6-12 yrs.  
Under 6 years of age is Free!

New owners Bea and Homer

**Barlow Trail Inn**

Nwy 26 between Welches & ZigZag

622-9995

## Welches plans school building

# \$3 million levy requested

The Welches School Board does not have the plans drawn yet but is asking voters in the school district to approve a \$2.99 million bond package on Sept. 19 to finance construction of a new school to handle anticipated growth of student enrollment.

Superintendent Jack Callaghan said this week that the board decided not to go ahead with detailed architectural drawings of the proposed new school until a reading from the voters on the bond referendum can be obtained.

"We feel there is a strong need for a new school here," Callaghan said. "We wouldn't be asking for the bond package if there wasn't."

The new school would be built on part of an 18-acre parcel of land adjacent to the existing school which was donated to the district by the county. It would contain 5-6 classrooms for intermediate and upper grade students.

Grades K-4 would be kept at the old school which was built 10 years ago.

The new school would also contain a gymnasium with an area for spectator seating. The present school contains a gym but does not have room for spectators.

Also planned is an arts and crafts room plus an upper grades library and cafeteria.

Callaghan stated that the existing school is not adequate to handle expected enrollment growth. The school was built to handle a student population of 300, he said. Last year's enrollment started at 310 but dropped to 287 by the end of the school year.

Callaghan pointed out that the county has issued 64 new building permits in the Welches school district which will result in more children for the school. He said the district plans for an expected growth rate of 6 percent a year.

If the bond measure passes, Callaghan said the new school would handle student populations through 1985.

"We think it would be wise to move on this now," he

said. "With construction costs going up at a rate of 18-24 percent a year, it makes sense to build now rather than waiting for the costs to increase."

Payoff on the bonds would add an estimated \$3 per 1000 of assessed valuation to the tax bill in the district. Voters

approved a tax levy this year which calls for a tax rate of \$3.97 a \$1 increase over last year's rate.

Callaghan said he will be available to speak to small groups of people about the proposed building plans at coffee hours in people's homes or at the school.

## Chamber lists fall speakers

The Sandy Chamber of Commerce has announced a fall roster of guest speakers, with Governor Bob Straub, opponent Vic Atiyeh, U.S. Sen. Mark Hatfield and U.S. Congressman Al Ullman headlining the list.

Chamber speaker at noon next Tuesday, Sept. 5, will be 4-H exchange student Anna Kingma from the Netherlands. The Chamber meets at TJ's Fireside Dining & Lounge in Sandy.

Roger Deaver of the U.S. Forest Service at Zigzag will discuss possible effects of RARE II on the Sandy area before the Chamber board of directors at 7 a.m., Monday, Sept. 11, at Griff's Longburger Country in Sandy.

Governor Bob Straub has confirmed an appearance before the Sandy Chamber of Commerce at noon, Tuesday, Sept. 12, at TJ's. This special luncheon meeting will be open to the general public, according to chamber

president Mary Hansen. Straub's gubernatorial opponent, Vic Atiyeh, will address the Chamber at noon, Sept. 19, at TJ's in another special luncheon meeting open to the general public.

Atiyeh is a 20-year veteran of the state legislature and present Senate Republican leader. He is currently serving his fourth-year term in the state senate. He was the Republican candidate for governor in 1974.

Former Sandy city recorder Ruth Loundree, one of five local candidates for mayor, will address the chamber at noon, Oct. 3, at TJ's.

U.S. Congressman Al Ullman will speak before the Chamber at noon, Oct. 17, at TJ's.

He will be followed Oct. 24 by U.S. Senator Mark Hatfield who will address the chamber in another noon luncheon at TJ's restaurant.

## BPW monthly dinner meeting scheduled

Dr. Jack Peters and Dr. Ruth McFarland will be guest speakers at the September dinner meeting of the Sandy Business and Professional Women (BPW). The meeting will be held at TJ's Restaurant at 7 p.m. on Sept. 6.

Dr. Peters is superintendent of Sandy Union High School and will speak on the school's plans for fall term. Dr. Ruth McFarland is a former English professor for Mt. Hood Community College and a candidate for State Superintendent of Education.

Dr. McFarland will present her platform and both speakers will discuss methods of stimulating voter response in the Sept. 19 budget election.

The program was coordinated by BPW legislative chairperson Judy Bowman and Pat Wolf. Reservations for the dinner meeting must

be made in advance by telephoning 668-4849, 668-6691 or 668-4054 by Sept. 4. The meeting is open to the public.

The BPW's program planning meeting was held Aug. 16 at the home of Marie Seematter with President Florence Schmitz presiding. The 1978-79 national theme is "Threshold to New Horizons" and the state theme is "Achievement through Teamwork."

A report from the BPW national convention, held in San Juan, Puerto Rico, was given by Mrs. Schmitz, who was a delegate. There were over 3,000 attending. Next year's convention is scheduled for Boston, Mass.

Maxine Hays from Junction City, past president of the National Foundation, was elected chairman for the Congress of the Americas to be held in Guatemala in November, 1979.

## The Theatre Sandy, Ore.

**THIS WEEK'S MOVIE IS HERE SOMEPLACE**

This is the busiest day of our life to this day. Believe it or not this column is being typed in the dark while we watch our new movie this week.

The movie is *The Other Side of the Mountain Part II*. It strikes us as a romantic movie with our favorite type of boy meets girl story line. The photography of the country side is magnificent. The girl is a quadriplegic—the boy a handsome truck driver.

As we were watching *The Other Side of the Mountain Part II* Monday we had counterpoint entertainment as our 7th Rock concert was setting up. It was a small conflict but we couldn't help thinking that if there were slow parts in the movie we could watch the musicians and "Rockies" set up equipment. If that wasn't enough, we then had a group called Traitor come in and they will be at The Theatre on Monday Sept. 18th in concert.

(Continued on Pg 9)

## COUNTY FAIR

DEPARTMENT STORE

HERITAGE SQUARE SANDY

SALE DATES:  
NOW THRU  
SEP. 9, 78  
OPEN 9:30 TO  
6 MON-SAT.

**BIKE BAGS**  
Sturdy Canvas with assorted multi-color prints

**\$2.49**

**STENO BOOKS**  
Reg. 69¢

**37¢**

**CRAYOLA CRAYONS**  
24 Ct. Reg. 85¢

**49¢**

**PEE CHEE FOLDERS**  
Reg. 19¢

**9¢**

**SCHOOL & OFFICE NEW WEBSTER'S DICTIONARY**  
Reg. \$3.25

**2.44**

**NOTEBOOK FILLER PAPER**  
300 Ct.

**79¢**

**20 EXP. SLIDES**

**\$1.09**

**36 EXP. SLIDES**

**\$1.99**

**8 MM & Super 8 MOVIES**

**\$1.09**

**NO. 2 PENCILS**  
Reg. 2 for 15¢

**3¢ EA.**

**BIC® PEN VALUE PACK**  
Each card contains two 25¢ medium pens plus one 59¢ fine pen.

**37¢**

**ELMER'S® Glue-All School Glue**  
Reg. 80¢

**39¢**

YOUR CHOICE