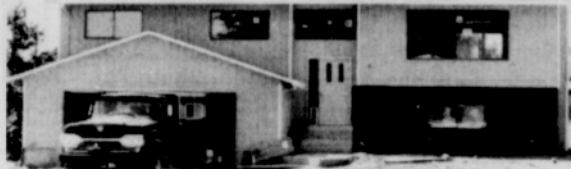




For More Information  
Call 256-1112 Today

## Georgetown Realty, Inc.



### COLUMBIA HIGH

**LARGE HOME** with convenient kitchen, eating space in addition to formal dining. Spacious master bdrm suite with private bath. Frplc in rec. room. 4th bdrm potential, shop area for Dad or hobby room for Mom. Priced at \$67,950.



### FAMILY HOME

**BEAUTIFUL RANCH STYLE** home with 3 bdrms, 1½ baths, and double garage. Large family rm enjoys energy-saving benefits of Earth stove. Patio door opens onto covered deck w-fenced backyard. Priced at \$52,950.



### 10 NEW HOMES

**UNDER VARIOUS** phases of construction. 3 bdrms, 2 full ba, dbl gar, frpl, dbl windows, indirect lighting, Whirlpool appl. Some with sunken L.R. All one level. Still time to pick colors & a lot within walking distance of the new Fred Meyer store in Gresham. Starting at \$50,950.



### SANDEE PALISADES

**NEW SPLIT ENTRY** w-3 bdrms, 2 baths (poss. 3), family rm., 2 frpics, dbl gar, sheetrocked utility, dbl windows, Jenn Aire, cedar front. Still time to pick colors. \$63,500.



### PRIVATE FOREST

**IN SUBURBAN** east side of Portland, is your own private forest of trees & shrubs. Contemporary 3 bdrm home, secluded patio in the large fenced yard. 1 and two-thirds bath, family rm with frplc., double garage. Home is in good condition with a new roof & paint. Available for immediate occupancy. \$52,500.



### FIRST TIME INVESTOR

**AFRAID OF** Real Estate? Start with this one and watch it grow faster than the rate of inflation. S x S duplex one & two bdrm. Attached garages. These units are small and they stay rented. Contract terms available. \$34,000.



### ASSUMPTION 8 PERCENT ROCKWOOD-CENTENNIAL- RANCH

**EXCELLENT FIRST** home or good rental. 3 bdrms, 2 baths, living rm w-frplc, dining rm, garage converted to family rm, covered patio. Cyclone fenced back yard. Close to shopping, bus, park. A good value \$44,950.

### SACRED HEART

**GRADE SCHOOL** is only 2 blks. away from this conveniently located 2 bdrm. in a super neighborhood. 1½ baths, frplc, formal dining rm. plus breakfast bar, full bsmf., gar, party rm. \$43,950.

### EXCELLENT OPPORTUNITY

**LARGE PARCEL** in rapidly expanding Gresham. This prime property has many possibilities. Restaurant, store, professional offices, etc., are possible. Extremely well-qualified builder will work many alternatives with purchaser. Call today for details.



### "CLASSY"

**SPLIT ENTRY** in Sweetbriar, 3 bdrm., 2 bath (roughed in for 3rd) 2 eating spaces, appliances, w-w carpets, deck, family room-wet bar, 2 fireplaces, 2 car garage, landscaped and fenced. Freshly done and only \$59,500.



### "SMART & SHARP"

**RANCH OFFERS** 3 bedrooms, 2 baths, family room, 2 fireplaces, formal dining room, 2 car garage, beautifully landscaped and fenced. Everything you need on one floor. \$61,950 Eves. 231-0002.

## RAY CASEBEER REAL ESTATE

667-2345

665-0118



### UNIQUE MOUNTAIN HOME

**BEAUTIFULLY REMODELED** Cape Cod type home in the woods approx. 10 miles east of Sandy. 4 bdrms, new carpets throughout, let us show you the charm of this home in the trees not far from skiing, golf & the Sandy River. New on the market & only \$51,500. 666-5521.

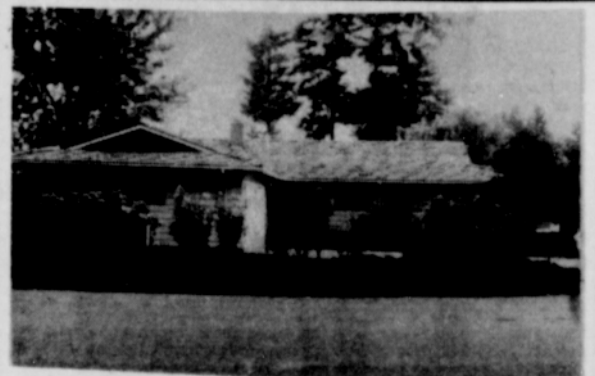
### CONTRACT TERMS

**18 MILES** east of Troutdale with a view of the gorge, cute 2 bdrm older bungalow home in the Dodson park area, excellent condition, easy access to the freeway, call for terms. \$31,950. 666-5521.

### FISH NEARBY

**ROSLYN LAKE** for trout and the Sandy River at Dodge Park for steelhead, lovely newer daylight bsmt ranch, seclusion plus on 5 acres, 4 bdrms, also room for horse, 14 x 28 barn with 1 stall & workshop area. Call for details, \$89,950. 666-5521.

**RELIABLE REALTY**  
103 SE 223rd-Troutdale  
666-5521



### LARGE

**CYPRESS PARK** 1674 sq. ft. Transfer allows IMMEDIATE possession on this sharp split shake roof, 4 bdrm, 2 full baths, large family rm. home in top area of Reynolds high. Stone frpl, built-in appls, dbl gar, on sewer, nicely landscaped. A fair price of \$62,500. Call 256-0542 for private showing.

### DON BOGH INC. Realtors

1027 NE 122nd  
in the Log Cabin