

E.G. Stassens, Inc. Realtors®



DON'T GIVE UP

YOU CAN still have your acreage & live close to town. 9.39 ac w-3 poss 4 bdrm older home, drld well, newer roof, possibilities galore. Fence the land for pasture. GR057. \$53,950. Call 666-9566 or 653-9844 eves., 630-3210.



GREAT STARTER

TWO BEDROOMS with a location close to Tri-Met, schools & downtown make for a great starter or investment home-terms. GR100. \$27,000. Call 666-9566 or 653-9844 eves., 630-4833.



OREGON VETERANS

1 ACRE with easy-care dbl-wide mobile home. 3 bdrm, 2 ba, 1440 sq ft, frpic, 20x30 garage-shop. Quiet area only 15 min from Gresham. Many extras! Call to see. GR900. \$48,950. Call 666-9566 or 653-9844 eves., 665-1255.



OLDIE BUT GOODIE

ONE OF those "Personality Plus" older homes that are so hard to find. 4+ bdrms, 2 ba, bsmt, frpic, well updated w-newer kit, roof, wiring, carpet & dbl gar, lrg pleasant lot w-fruit trees & garden space. GR907. \$53,000. Call 666-9566 or 653-9844 eves., 630-3210.



YIPPIE!

RIVER PROPERTY look over the Sandy River from this home located on 1 ac of secluded privacy, beautiful contemporary chalet home, a lot of cedar, vaulted ceilings, 3 bdrm, 2 ba, sparkling home w-many extras. \$74,500. GR364. Call 666-9566 or 653-9844 eves., 665-3535.



REFRESHING ARTISTRY!

YOU'LL DISCOVER exquisite features to enhance comfort & entertainment. lrg luxurious kit, formal DR, sunken LR, fam rm, 2 frpics, deck, shake roof, lrg dbl gar, make this 3 bdrm, 3 ba tri-level home captivating. GR549. \$76,950. Call 666-9566 or 653-9844 eves., 666-8639.

LIVE ON 5 ACRES

IN A 1975 all elect. mobile home w-3 bdrms, 1 1/2 ba, wood-burning Fischer stove, 36x40 barn needs completing, trees and home, fenced & 1 blk from Tri-Met. GR168. \$39,950. Call 666-9566 or 653-9844 eves., 630-3210.



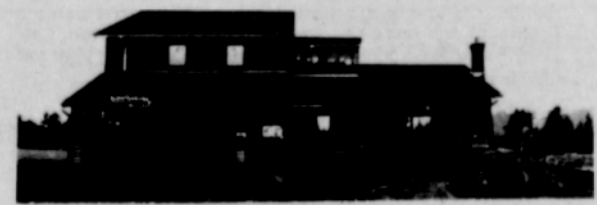
4 ACRES OF PRIVACY

AND A newer ranch style home just 2 min from Est. Perfect kit, w-blit in appli, secluded deck in the trees, 2 ba, 3 bdrms, brick raised-hearth frpic, fin dbl gar & a poss monthly pymt reducer! GR002. \$64,950. Call 666-9566 or 653-9844 eves., 630-3210.



LOOK AT THE PARK

LOCATED ACROSS the street, great new area, contemporary side split home w-many extra features, dbl constr, spacious 3 bdrm, 3 ba home w-everything you've been looking for. Extra quality. GR735. \$67,950. Call 666-9566 or 653-9844 eves., 665-3535.



E.G. Stassens, Inc. Realtors
1025 E. Powell 666-9566

POWELL BLVD. C-2

EXCELLENT COMMERCIAL property located in Gresham City Center. Heavy traffic flow. Approx. 23,256 sq. ft. only \$50,000 with excellent contract terms. Eves. call Phyllis Fancher, 665-6783.

DEPUX SPLIT ENTRY

GRESHAM CITY location, 3 bdrms, 2 baths, 2 fireplaces, insulated windows, range DW., gas forced air heat. Huge double garage. Assumable builder's loan. \$60,950. Evenings call Connie Schmick, 666-1054.

21 ACRES

OF BEAUTIFUL Oregon, 7 miles SW of Molalla, 7 acres cleared field, balance small timber. \$65,000. Excellent terms. Evenings, call Phyllis Fancher, 665-6783.

ROOM FOR MOM

LOVELY 3 bedroom ranch home in beautiful Cypress Park. Two baths, lovely grounds, formal dining room, family room plus 4th bedroom and 3 bath in professionally converted double garage. By appointment only, \$62,950. Evenings call Phyllis Fancher, 665-6783 or Connie Schmick, 666-1054.

SNYDER BROTHERS REALTY
1300 NE Linden 665-4105

260- Real Estate
General

GRESHAM'S SPACIOUS EXECUTIVE

OPEN 12-4 SAT. AND SUN

4 BDRM. split entry home. Custom draperies, 2 frpics, oversized garage, double construction, 2 yrs. old. By owner. \$69,950. Drive by, 2218 NE Morlan or call 667-4298 for appt.

BY OWNER

3 BDRM. ranch. Sunken living rm., cathedral ceilings, frpic., landscaped yard. Immaculate. \$51,000. NO BROKERS. 666-7912.

OPEN SUN 12-4 GRESHAM'S INVERNESS

2500 SQ FT, 4 bdrm, 2 2-3 baths, adobe brick frpic in living rm, lg family rm w-frpic, oversized dbl garage, large fenced yard \$77,500. By owner. Powell So. on Towle to 19th, 1783 SW 18th Ct. 667-2565 or call for appt.

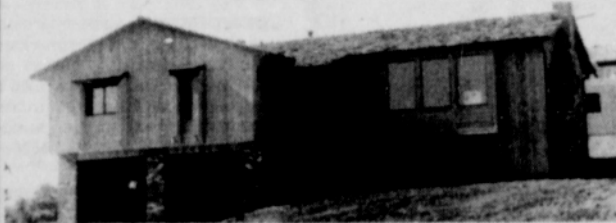
BREATHTAKING VIEW

\$112,000. SEE Mts. Hood, Adams, St. Helens and Rainier. Japanese garden. Fish pond and waterway. Almost 1 acre. Meticulously landscaped. Living rm w-view. Formal dining rm. Woman-saver kitchen. O'size 22'x29' garage to accommodate camper or mobile home. Large party rm. Workshop. 3 bdrms, 2 and two-thirds baths. An executive's dream. No. 536. Call 667-2001.



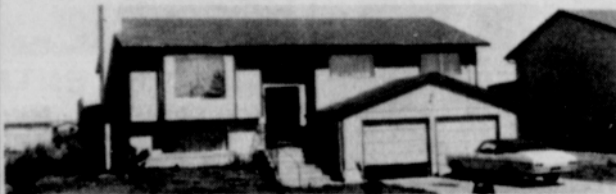
SUNRAE HOMES

\$73,950 DISTINCTIVE ranch split in Gresham's new MARPOL RIDGE, 3 spacious bdrms, laundry rm on main floor, country kitchen w-breakfast bar plus nook and dining rm, huge dbl garage. Superior floor plan w-quality fixtures and workmanship. completion approx. April 23rd. No. 789. Call 667-2001.



SPACIOUS SPLIT LEVEL

\$65,250 3 bdrm, 2 1/2 baths, frpic, 4th bdrm or den. All large rms, 2 frpics, Mt. Hood view. Thermopane windows. No. 034. Call 667-2001.



SUPER RANCH

\$59,000 SHARP NEW Rambler. 3 bdrms, 2 full baths. Master has walk-in closet and covered patio. Large elegant living rm with frpic. Dining rm, family rm, 2 car garage, convenient kitchen with built-in appliances and eating bar. Choice location in Chelan East. 10 Year Home Owner's Warranty. No. 585. Call 667-2001.



PARKLIKE YARD

\$57,950. 3 bdrm, 1 and two-thirds baths, large party room w-wet bar, cozy kitchen. Large, fenced backyard w-cute storage shed or playhouse on cement foundation. Dbl garage. Close to schools and shopping. No. 019. Call 667-2001.



S.J. Pounder
REALTY CO., Realtors

OREGON M.L.S. **Gresham Office** **RE**
667-2001 — 255-1386
Metropolitan Portland's Finest Real Estate Service