

Parking, bypass concern Sandy residents

Sandy and Sandy-area residents offered a wide range of opinions on what directions they would like to see the city move in the future in terms of services or facilities. The responses were taken from informal and unscientific "on-the-street" interviews conducted by The Post during the past week.

Persons responded to the following question: "What improvements, if any, would you like to see in the city in terms of services or facilities."

The following is a sampling of the opinions offered:



Jeannie Head

"A bypass is the number one item on my list for Sandy. The city is going to get bigger. I think it's time to start planning for one now."

"The next thing would be a day care center. I know of a lot of people who have said they would like to see one started here."

"And I think we could use a branch bank. And a really good bookstore."

Judy Shepherd

"We need a stoplight in front of the bank to cut down the danger of getting killed every time you cross the street. I crossed there one time in the crosswalk and had cars pass on both sides of me..."

"This community needs a mini-convention type facility to hold all kinds of programs. Something for dance recitals, plays, graduations; a place for the performing arts..."

"I think we need to control the growth in the area. I'm not sure how to do it, but it needs to be done."



Steve McLellan

"I like the city just the way it is. I feel well covered in terms of fire and police protection."

"I think the new wood fronts on the stores in the downtown is an excellent idea. I'd like to see the rest of the town do the same thing. It gives the city a unique look..."

"I've been here two years and I've seen the city grow just in that time. I don't know how you could stop the growth. But I'm very satisfied with the way things are."

Sharon's Food King) who has proposed to expand his store outside the downtown area) has no choice but to go out of town. If the city won't let him do it then someone else will come in. Moving is his only alternative...

"I don't like to travel out of town to do all my shopping but I don't think I'll have a choice with the way things are growing..."

"I'm pleased about the new elementary school that's going to be built on Kelso Road. I think it shows a lot of foresight on the part of the school board."



Michelle Davis

"The city needs to do more about recreation. It would be a good idea to build a bicycle trail in the city park. Do more to fix it up as a playground..."

"We're waiting for the theater to open..."

traffic laws a little more. People come speeding through here and it's so bad during lunch that you can't cross the street..."

"I think the city needs a bowling alley. A lot of people come off the mountain and go into Gresham to bowl. If we had one here, they'd stop..."

"There used to be one here years ago but there weren't enough people then to support one. I think there's plenty of people in the area to support one now..."

"And I think the city needs a good big restaurant..."



Tom Sullivan
(former chairman of the Sandy Planning Commission)

"The city needs a good motel-restaurant combination for people who come through here..."



Anabel Isakson

"I've lived around Sandy most of my life. The parking problem is getting worse now than it ever has been. It's jam-packed in here now..."

"I don't think it would be a bad thing at all if Sharon's Food King moves to that new location..."



Dorothy M. Mills

"I'm all for a bypass around the city because of the traffic. It's bad enough now and it's probably going to get worse in the future..."

"I think Gale Meier (owner of



Mrs. Don Wyatt

"I think the police need to enforce the

Crash knocks out power

A Sandy driver crashed into a power pole and spun his car to a halt on an embankment near the high school lawn on Southeast Bluff Road late Tuesday night.

Some 680 homes north of town lost electrical power from the downed feeder for about 90 minutes.

Norman L. Dorsett, 21, of Bluff Road in Sandy, failed to negotiate the south turn near

Sandy Union High School, as his 1970 yellow Ford Torino went out of control and leveled a Portland General Electric power pole, according to police reports.

His car was sideswiped on the driver's side on impact with the pole, and the car spun around to finally come to rest on a bank some 175 feet from point of initial impact.

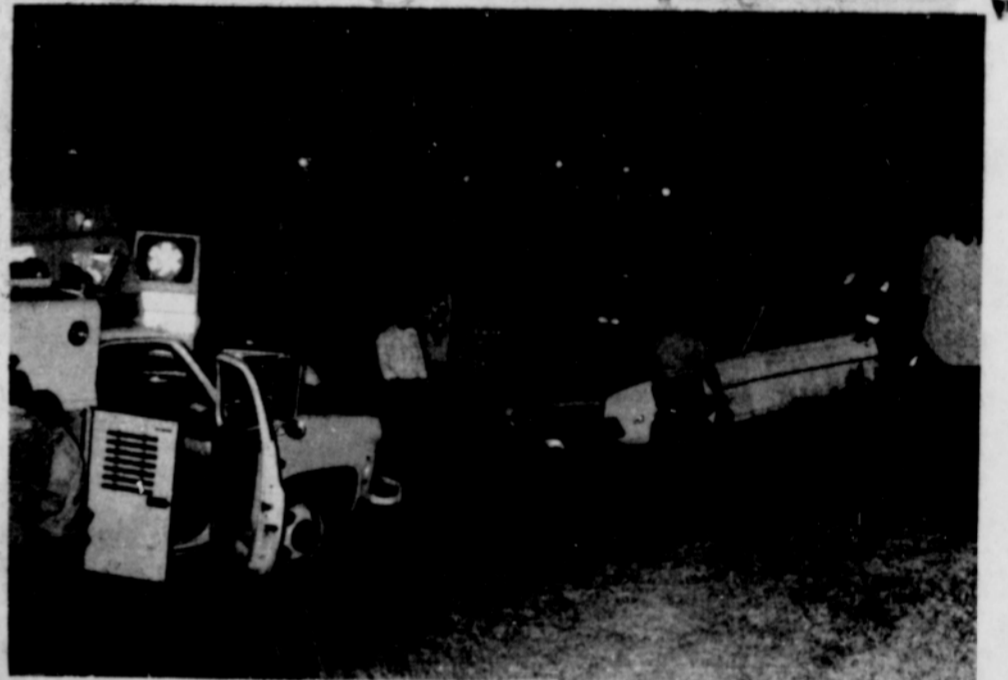
The driver was rushed to

Gresham Community Hospital for treatment of minor cuts and bruises and possible concussion and neck injury.

He was listed in satisfactory condition Wednesday morning.

Sandy firefighters trained a steady stream of water on the wrecked car which was leaking gasoline.

The driver was cited for careless driving.



NORMAN DORSETT leveled a PGE power pole Tuesday night when his Ford Torino went out of control on Southeast Bluff Road. Power was out for 90 minutes in 680 area homes.

Lamb show set Saturday

A barbecue lamb luncheon will be served at the Clackamas County Annual Lamb and Wool Show Saturday, June 3.

The meal is being prepared by members of the Clackamas County Stockmen's Association and will

be served from 11:45 a.m. to 12:45 p.m.

In addition to the luncheon, the 32nd annual event will highlight numerous aspects of the county's sheep industry, said chairman Charles Daugherty of Molalla.

The day will include spinning and weaving demonstrations and sheep dog demonstrations by trainer Beverly Cleland of Oregon City, as well as lamb show events of bumper lambs, selection of champion breeding classes, showmanship, championship and grand champion market lambs.

The Clackamas County Lamb and Wool Show has become one of the largest show pools in the state. Last year producers sold 772 lambs, putting over 84,000 pounds of lamb meat on consumers' tables.

The lamb pool is sold prior to the show to the highest bidder. Lambs will be received starting at 6:30 a.m. and will be weighed on the scales at the fairgrounds. All market lambs must weigh 90 pounds or over.

A special feature of interest to spinners and weavers will be the 2:30 p.m. select wool auction.

The Lamb Show is co-sponsored by the Clackamas County Stockmen's Association, the Clackamas County Fair Board and the Oregon State University Extension Service in Clackamas County. Admission is free.

Classified Business, Professional Directory

For Your Card In This DIRECTORY — Phone 668-5548

FURNITURE

New and Used
B & B EMPORIUM
Unfinished Furniture
"The Everything Store"
38888 Pioneer, Sandy 668-5448

FURNACES

CROWN FURNACE
Furnace — Air Conditioning
Heating & Refrigeration Service
Phone 668-5454 or 622-4575
39090 Pioneer Blvd., PO Box 593, Sandy, Ore.

PUMP & SUPPLY

Fairbanks - Morse - Red Jacket
SALES and SERVICE
D & A PUMP & SUPPLY
666-2683 668-4902

AUTO PARTS

ACTION
Auto & Truck Parts Co.
OPEN 7 DAYS A WEEK
39130 Proctor Blvd. 668-5509
(Next to Sandy Cycle) Sandy, Ore.

TRUCK LINES

SANDY TRUCK LINE
Moving
General Freight
668-4148

TAX CONSULTANT

ALLMAIN TAX SERVICE
Cedar Plaza Bldg. Suite No. 9
Bookkeeping & Income Taxes
Pickup & Delivery
668-8224

AUTO REPAIRS

SANDY AUTO BODY INC.
38850 Pioneer Blvd. Telephone
Sandy, Oregon 97055 668-4175

REMODELING

C&L Remodeling Specialists
Residential-Commercial-Remodeling-Additions-Kitchens-Baths
Lee Edgren - Clark Hall "Licensed Bonded"
Sandy 668-7491

MACHINERY

BERGH MACHINERY CO.
See Us for New Jacuzzi
Pumps and Repairs on all Makes of Pumps
Loop Hwy. & Boring Road, Gresham
Telephone: 663-4353

PLUMBING

BENSHOOF
Plumbing & Heating
Sales, Service, Installation
Sandy 668-4993

SAND and GRAVEL

ROCK CREEK SAND AND GRAVEL
Crushed Rock, Fill and Top Soil
658-3138

CONCRETE READY MIX

MT. HOOD READY MIX
Ready Mix Concrete - Crushed Rock Sand and Gravel
Phone 668-6515
Plant located at Firwood Junction

LAND SURVEYOR

MARX & CHASE
Registered Land Surveyor
Registered Land Surveyor, Surveying, Mapping, Subdivisions. Office located at
225 E. Burnside Ext. Gresham

TELEVISION SERVICE

Inland TV & Radio Service
Guaranteed Service On All Makes
668-7363
CEDAR PLAZA No. 1 LOWER LEVEL
Carry-In Service

Our OWN "Fresh-ground" Pure Peanut Butter

Ground while you wait!
SAVE 29¢ lb. **69¢** lb.



In Sandy's new Rader Bldg. in Heritage Square

Health House

9:30-6:30 Mon.-Sat. Bruce & Diane Schliever

THE NEW SEIKO QUARTZ DUAL-ZONE POCKET ALARM. FOR TRAVEL, BEDSIDE OR DESK.



An exciting new gift idea from Seiko, small enough for a man's pocket or a woman's handbag. Now, the incomparable accuracy and readability of LC Digital Quartz, plus the convenience of an alarm. A hidden easel stands it on desk or bed table. Dual-Zone timing is great for travel. And it never needs winding. Available in blue, burgundy or gilt stripe with matching pouch. The approximate size of the Seiko Pocket Alarm is 4" x 1 3/4" x 1/4".

Grokkell Jewelry

NEW STORE LOCATION
39085 Proctor Blvd., Sandy, OR 97055
Phone 668-6136