

Hoodland fire asks tax base

The Hoodland Fire District is asking voters to approve a \$150,000 tax base in Tuesday's election.

Fire Chief Don Armintrout said the expanded tax base is intended to upgrade equipment and district planning toward "minimal standards."

The increase from the current \$65,000 tax base is expected to afford a new district rescue vehicle, seed a reserve fund for a new substation in Rhododendron and purchase some \$11,000 in

equipment "badly needed" by volunteers.

Top priority with the new money would be a rescue vehicle to replace the make-shift borrowed Chevrolet Suburban donated by board member Al Moore.

The suburban, not designed for emergency situations, replaced an old Oldsmobile rig which the volunteers abandoned as unsafe. The proposed Rhododendron substation is intended to protect summer homes in the area.

Welches School levy vote Tuesday

Voters in the Welches School District will be asked to approve a \$385,028 school levy in the primary vote Tuesday.

The total represents a 25 percent increase over last year's levy passed by district voters.

Inflation and salary increases as well as additional funds required for education of handicapped children under federal legislation were the cause for a large portion of the increase.

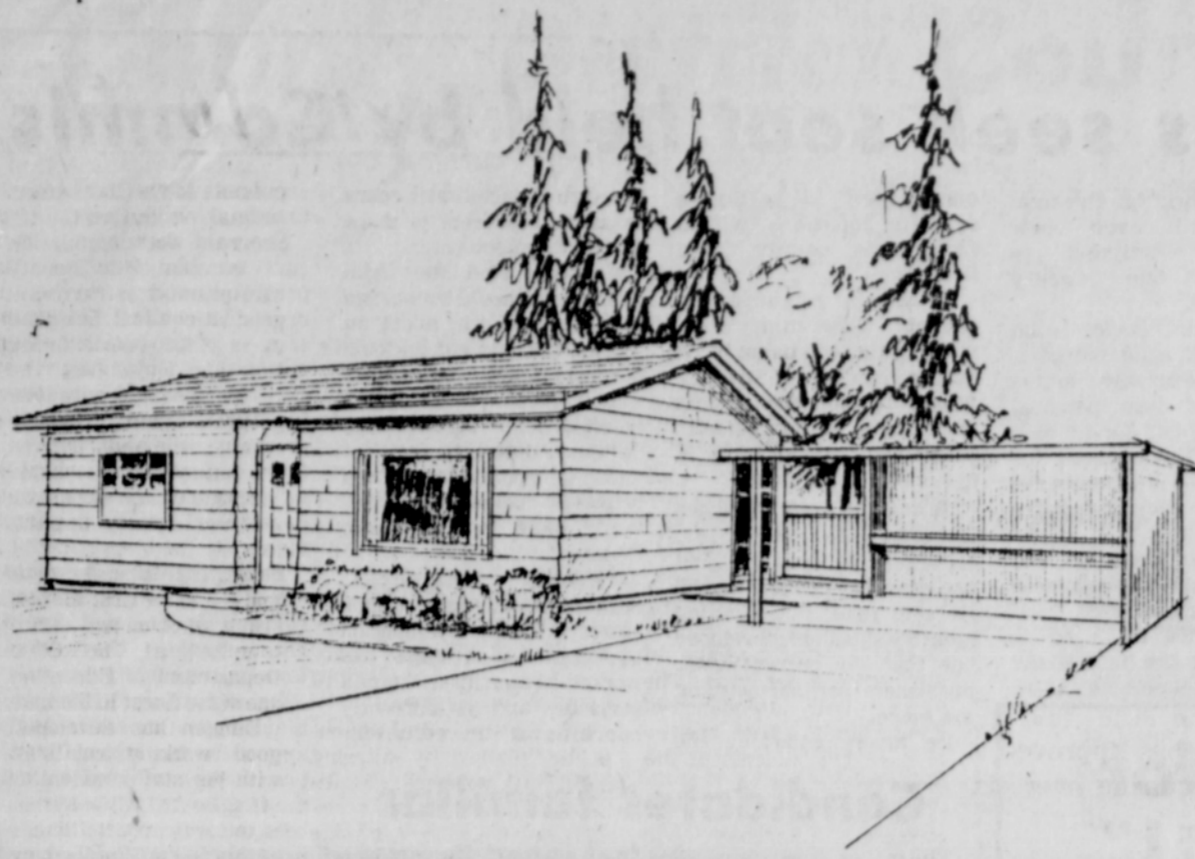
The budget, approved in March by the school board, also includes funds for the purchase of a new school bus.

No new programs are included in the budget.

Welches voters will be asked to decide on a tax base for the district in the November general election.

The district has never had a tax base and all local funding has been voted through levies on a year to year basis. However, under a bill recently passed by the Oregon Legislature, district school boards in the state are required to submit new tax base proposals to the voters every two years.

The tax base proposal, if approved in November, will not affect the 1978-79 school budget.



GRESHAM POLICE have released this artist's sketch of the suspect residence in Stacie Wilmoth's kid-

napping. Police emphasize the drawing may not be totally accurate due to limited available facts.

Police search for house

Lacking any substantial leads, Gresham police have released an artist's sketch of a house to which she was taken following her kidnapping April 26.

The seven-year-old was abducted from West Gresham Grade School and found battered the next morning in brush off Sundial Road in Troutdale.

The house, which Gresham police believe is somewhere in or near Gresham, is located in a heavily wooded area, according to Stacie. It is a one-story ranch house painted or stained brown with a dark reddish brown roof.

A paved driveway leads to a carport which is separate from the house on the right side. Its roof is green plastic,

similar to corrugated fiberglass.

A red motorcycle with a red tank and black frame was parked in the carport, said Stacie.

A wooden deck leads from the garage to sliding glass doors at the side of the house. A cement walkway leads to the front door, which has probably eight square panels, the girl told police.

She said the house was

clean inside and out. Across the street is a muddy area filled with underbrush. The surrounding trees are probably fir and alder, according to police.

Stacie's kidnapper is described as a white male, about 6 feet tall, in his mid-20s with reddish brown wavy hair. He has a mustache and wore sunglasses while driving, Stacie reported.

WANTED:

Cascara Bark!

Top Prices paid for Green or dry

Phone 663-4291

Lloyd Holt

Agency for Western Crude Drug Co.



STEVE STARKOVICH
Democrat for STATE SENATOR
14th District

"New people with better ideas. Good government needs them all the time."

STARKOVICH FOR STATE SENATOR
THE CHALLENGER —
A CHANGE TOWARD OPEN
AND HONEST GOVERNMENT

Paid Steve Starkovich for State Senator Committee, Douglas D. Lind, treasurer, 722 Main, Rm. 1E, Oregon City, Oregon 97045. 657-1778.

Measure five addresses roads

The gas tax increase and declaration of highway repair priority, Ballot Measure 5, was passed by the 1977 Legislature and referred for a vote. It would increase the state gas tax by 2 cents to a total of nine cents a gallon. It would also increase the license tax paid by dealers on motor vehicle and aircraft fuel by 2 cents and the license tax on aircraft fuel sold by dealers to subdealers by 1 cent.

The measure also outlines a higher weight mile and flat fee tax schedule for trucks based on their proportionate use of the highways.

Highway user taxes will be spent by the Department of Transportation for reconstruction and maintenance of highways before it can be spent for new construction. Completion of I-205 would be exempt from the priority requirement.

If the measure is approved, it will bring an additional \$25 million in gas tax revenue and \$6 million in truck taxes to the state

during 1979.

The measure restricts the amount of highway user taxes to be spent on bike paths, state police and parks. Bike paths would be funded through the general fund, state police would be cut from 12 percent to 8 percent of the highway funds and parks would be cut from 3.5 percent to 1 percent of the revenue.

Those limitations are a main argument for a "no" vote. Opponents also object to using highway funds for mass transit.

Those in favor point to deteriorating roads which they maintain will become more expensive to repair the longer maintenance is delayed. They also say many roads are unsafe and inadequate. Proponents also believe that the measure sets proper priorities for spending by limiting new construction and eliminating programs they believe should be funded from other sources.

Greenidge due at Aglow

Renee Greenidge, minister of music at East Hill Church in Gresham, will be the guest speaker at the Tuesday, May 23 meeting of Hoodland Aglow Chapter.

The luncheon meeting at Bowman's Mt. Hood Resort

in Welches will last from 11:30 a.m. to 2:30 p.m.

Baby-sitting will be included and those taking advantage of that service are asked to bring a sack lunch for their child.

For reservations call 622-3265, 622-4415 or 668-4972.

WE'VE REMODELED

Griff's Longburger Country in Sandy is expanded for downstairs & upstairs view dining with a beautiful rustic decor!

HELP US CELEBRATE—

"OLD-FASHIONED PRICES"

. . . to match our antique, rustic decor.

THIS SATURDAY & SUNDAY ONLY



We feature

Small Softdrinks

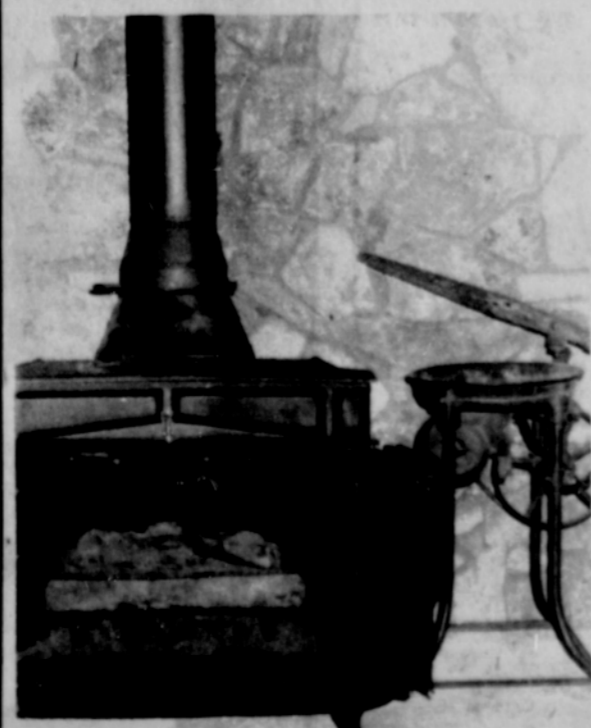
Sat. & Sun only! **5¢**



Soft Vanilla Ice Cream
Small Sizes
Sat. & Sun. Only **5¢ Ea.**

"Old Home-Style Breakfasts"

4:30-11 a.m. Weekdays &
6 - Noon on Weekends



Plus other
Added
Attractions

GRIFF'S
Longburger
Country

PHONE 668-4626



Heidi's Boutique

Fashion Jeans
- by -
Chevalier
& Ditto

Separates
- by -
Tami
Ship 'n Shore,
Bay Shore

Heidi Swiss Village
Mt. Hood Freeway
Boring Exit
Open 7 Days

